

**FABRAL CORPORATION METAL ROOFING & SIDING**

LENGTHS	DOUBLE-RIB ALUMINUM HI-STRENGTH ALLOY WIDTH 48" NET	GALVANIZED STEEL 29 GAUGE WIDTH 32" NET	1/4"-29 GAUGE CORRUGATED GALVANIZED WIDTH 24" NET
7'	—	5.20	3.92
8'	8.78	5.95	4.48
9'	—	6.70	5.03
10'	10.97	7.41	5.59
11'	—	8.18	—
12'	13.16	8.92	6.72
14'	15.35	10.40	—
16'	17.54	—	—
18'	19.73	—	—
20'	21.92	—	—
22'	24.12	—	—

**A COMPLETE LINE OF MATCHING ACCESSORIES**

1 PIECE RIDGE CAP	52 1/2"	4.18	—	10'	4.60
2 PIECE RIDGE CAP	52 1/2"	5.21	52 1/2 set	4.35	—
10' RIDGE ROLL	—	6.92	—	3.79	—
END WALL FLASHING	52 1/2"	3.52	52 1/2"	3.33	28" 1.59
12' FIBERGLASS GREEN	49 3/8"	16.49	33 1/2"	11.19	—

**Annular-Thread METAL ROOFING NAILS WITH FLAT NEOPRENE WASHER**

	ALUMINUM 500 PACK	GALVANIZED	
		5 lbs.	50 lbs
1 1/4"	5.32	—	—
1 3/4"	5.86	5.49	48.67
2"	6.41	5.42	48.05
2 1/2"	4.94	5.17	45.63

**BARN DOOR HARDWARE**

- \*51-16 Galvanized RAIL...6,8,10,12 per ft. .... \$ 1.10
- \*52 Galvanized HANGER... pair. .... 11.07
- \*F51 Galvanized BRACKET ..... .86
- \*G51 Galvanized BRACKET ..... 1.33
- \*H51 Galvanized BRACKET ..... 3.26
- \*59A Galvanized RAIL ..... per ft. .... 2.03
- \*53 Galvanized HANGER ... pair. .... 12.66
- \*H51 Galvanized BRACKET ..... 4.61
- \*18 STRAY ROLLER... .. 1.66
- \*2110-8 GATE HOOK ..... 2.94
- \*17 DOOR BUMPER.. Alum 1.08 ... Galv. .... 1.98

**BARN & DROP SIDING Pattern No. 116**

1x10	33¢	\$393 <sup>00</sup>
------	-----	---------------------

ABOVE PRICES PER M BD. FT.

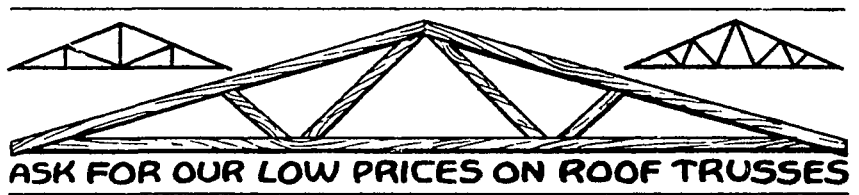
**SQUARE BARN POLES CCA Treated**

	10'	12'	14'	16'	20'
4"x4"	4 <sup>60</sup>	5 <sup>61</sup>	6 <sup>77</sup>	8 <sup>36</sup>	—
4"x6"	—	9 <sup>19</sup>	10 <sup>72</sup>	13 <sup>06</sup>	18 <sup>12</sup>
6"x6"	—	14 <sup>00</sup>	16 <sup>34</sup>	19 <sup>34</sup>	25 <sup>44</sup>

**CENTER MATCH BOARDS 2"x6"x12' MBM CCA ..... 363.<sup>00</sup>**

**FARM GATE and FENCE BOARDS**

1 1/8"x6" R.L.	CCA PENTA
	28 1/2 Lin Ft.



ASK FOR OUR LOW PRICES ON ROOF TRUSSES

MADE TO YOUR SPECIFICATIONS FIR OR YELLOW PINE



**US Fiber® ATTIC INSULATION**

Do it yourself...right over the old insulation. Just pour, spread and level. Save fuel, money and energy...increase comfort and home value.

Covers 42 3/4 sq.ft. 3" thick 30lb. BAG. **\$4.79**

- O.C. Fiberglas® PORK INSULATION per ft. .... 11¢
- 3 1/2"x15" R-11 Kraft Faced 70sq.ft. ROLL ..... \$7.70
- O.C. Fiberglas® PORK INSULATION per ft. .... 11¢
- 3 1/2"x23" R-11 Kraft Faced 107sq.ft. ROLL .... \$11.77
- O.C. Fiberglas® PORK INSULATION per ft. .... 18 3/4¢
- 6"x15" R-19 Kraft Faced 40 sq.ft. ROLL .... \$7.30
- O.C. Fiberglas® PORK INSULATION per ft. .... 18 3/4¢
- 6"x23" R-19 Kraft Faced 61 1/2 sq.ft. ROLL .... \$11.19

**OPEN 7:30 TO 5:30 — 6 DAYS A WEEK . . . . DELIVERY AVAILABLE**



2275 OLD PHILADELPHIA PIKE  
LANCASTER, PA. 17602  
3 Miles East on Rt. 340  
717-397-4829 or 397-4820

RT. 230  
ELIZABETHTOWN, PA.  
1 Mile East of Elizabethtown  
717-367-1886 or 653-8310

