

## Livestock market and auction news

### Indiana Livestock

Indiana, Pa.  
April 20, 1978

**CATTLE** 186. Compared with last week's market, Slaughter cows \$2-3 higher. 1 Choice slaughter steer 55.25, few good 44.25-50.00, few standard 41.75-43.50. Choice YG slaughter heifers 42.00-47.25, few 52.00-52.50. Good 38.00-41.50, few standard 36.75-38.25. Utility & Commercial slaughter cows 38.50-42.50, few 42.75-44.25, cutters 36.00-40.00, cannors and low cutters 33.00-37.50, shells down to 30.00. Standard 36.00-36.50. Yield Grade No. 1 1250-1710 lbs. slaughter bulls 44.00-44.50.

**FEEDER CATTLE:** Choice 570-750 lbs. steers 40.00-53.50. Good & Choice 300-718 lbs. heifers 39.00-44.50. Good & choice 400-800 lbs. bulls 41.00-53.50.

**CALVES** 146. Vealers graded good and choice mostly \$1. Choice 68.00-75.50, few 79.00- higher, all standard grades \$2-3 higher. Good 58.00-69.00, few standard & good 110-130 lbs. 55.00-60.00, 90-110 lbs. 48.00-53.00, Standard 70-90 lbs. 40.00-48.00, Utility 55-100 lbs. 35.00-40.00.

**FARM CALVES:** Hol. bulls 80-120 lbs. 55.00-64.00, Holstein heifers 80-110 lbs. 50.00-62.00.

**HOGS** 118. Barrows and gilts \$50-1 lower. Barrows and gilts No. 1-3 200-235 lbs. 46.00-47.00. No. 2-3 195-260 lbs. 43.75-45.75, few No. 2-4 250-325 lbs. 41.00-43.50, No. 1-3 145-175 lbs. 35.00-41.00. **SOWS** US No. 1-3 300-575 lbs. sows 40.00-44.00, few No. 2-3 290-300 lbs. 38.75-39.00. **BOARS** 28.00-30.50.

**FEEDER PIGS** 26. US No. 1-3 38-40 lbs. feeder pigs 26.00-31.00 per head, 1 lot 50 lb. 31.50, 1 lot 100 lb. 46.00 per head.

**SHEEP** 20. Spring slaughter lambs choice 55-65 lbs. 75.00-76.50, good 55-100 lbs. woolled slaughter lambs 40.00-53.00.

### Chambersburg Auction

Chambersburg, Pa.  
April 20, 1978

**CATTLE** 402. Compared with last Thursday's market, slaughter steers grading good \$1-1.50 higher. Slaughter cows \$1-2.50 higher. Few low to average choice YG 1000-1150, gr. 2-4 lbs. slaughter steers 52.50-54.00, Good 47.85-51.50, few standard 42.50-45.85, Choice YG slaughter heifers 48.00-52.00, few good 45.25-48.25, Standard 43.00-44.10. Utility & commercial slaughter cows 38.50-44.10, few 48.75, cutters 38.50-41.75, cannors and low cutters 36.00-38.75; few shells down to 33.00. Few Standard 44.35-45.35, few Utility 41.00-42.85. Yield Grade No. 1 1150-2100 lbs. slaughter bulls 44.85-48.10, 1 at 49.85.

**FEEDER CATTLE:** Choice 300-650 lbs. steers 48.00-56.00, good 300-650 lbs. 38.00-45.50.

**CALVES** 347. Vealers grading good and choice uneven, mostly steady to strong, good 70 to 110 lb. \$3 to 6 higher. Prime vealers 83.50-87.50, choice 70.00-83.00, good 64.00-70.00, Standard & Good 90-110 lbs. 58.00-63.00, Standard 70-85

lbs. 53.00-58.00, few Utility 60-90 lbs. 40.00-50.00.

**FARM CALVES:** Hol. bulls 90-120 lbs. 58.00-63.50, Holstein heifers 90-135 lbs. 58.00-80.50.

**HOGS** 108. Barrows and gilts 1.50-2 higher. US No. 1-2 200-230 lbs. barrows and gilts 46.50-47.50, 1 lot at 47.85, No. 1-3 200-240 lbs. 45.56-46.50. **SOWS** few US No. 1-3 400-600 lbs. sows 37.50-41.50, few **BOARS** 28.00-31.50.

**FEEDER PIGS** 63. US No. 1-3 30-45 lbs. feeder pigs 36.00-50.00 per head.

**SHEEP** 75. Spring slaughter lambs few choice 20-45 lbs. 90.00-125.00, choice 55-85 lbs. 65.00-79.00, 1 lot 84.00. Slaughter ewes 16.00-18.75.

### Lancaster Feeder Cattle

Lancaster, Pa.  
Friday, April 14, 1978

**Feeder Cattle**  
Today 580  
Last Friday 559

**TREND:** Feeder steers 50-1.00 higher on available supply. Supply included 200 head string of Choice 550-675

lb. with few lots 450-800 lb. with balance sold in lots of three or less.

**FEEDER STEERS:** 200 head Choice 550-675 lb. 55.00-56.00; one lot Choice and Prime 500 lb. 58.00; few lots Choice 450-550 lb. 54.50-55.00; couple lots mixed Good and Choice 580-760 lb. 52.75-53.85; Good 550-915 lb. 47.75-51.00.

### New Holland Dairy

New Holland Sales  
Stables

Wednesday, April 19

Reported receipts of 99 cows, 84 heifers, and 8 bulls. Market stronger than last week's market.

Load of Pa. fresh 720-800; load of Pa. fresh 510-850; load of N.Y., purebred and grade, fresh 625-1000, springers 725-950; load of Butler Co., purebred and grade, fresh 570-850, springers 600-1075; local cows 450-875; springing heifers 450-775; purebred springing heifers 725-870; open heifers 250-410; bulls 295-450; herd dispersal of 20 head in all stages of lactation 465-800.

### Special Feeder Calf and Yearling Sale

April 18, 1978  
Staunton, Va.

There were 725 head sold. All cattle were graded by Representatives of the VDAC's Division of Markets, Livestock Section on VDAC standards and sold by the hundredweight.

**Steers**

Choice & Fancy: 350-500 lbs. 60.00-64.75; 501-600 lbs. 58.50-60.00; 601-700 lbs. 52.75-58.00.

Good: 350-500 lbs. 61.00-68.00; 501-600 lbs. 58.50-62.00; 601-700 lbs. 52.75-57.00; 701-800 lbs. 51.75-54.00.

Medium: 350-500 lbs. 54.00-64.00; 501-600 lbs. 55.00-60.50; 601-700 lbs. 50.00-54.00.

**Heifers:**

Choice & Fancy: 350-500 lbs. 46.25-49.00; 501-600 lbs. 47.75-48.50; 601-700 lbs. 45.75-47.00.

Good: 350-500 lbs. 46.00-49.00; 501-600 lbs. 46.25-47.00. Medium: 350-500 lbs. 45.25-48.50.

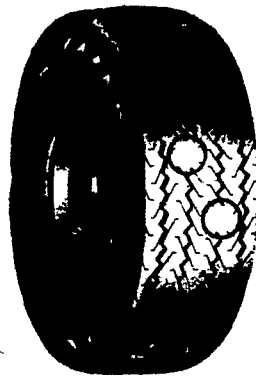
## SPRING SPECIAL

DOUGLAS PREMIUM

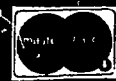
HIGHWAY  
TIRES

825 x 20  
10 PLY

\$84<sup>50</sup>



900 x 20 10 ply ..... \$98.98  
1000 x 20 12 ply ..... 123.00  
1000 x 22 12 ply ..... 134.15  
FREE MOUNTING PLUS F.E.T.



HURST  
TIRE SERVICE

PHONE: 717-354-4931

1 MILE WEST OF BLUE BALL ON RT. 322  
HOURS Mon & Fri - 7:30 to 9:00  
Tues, Wed & Thurs - 7:30 to 5:00, Sat - 7:30 to 12:00

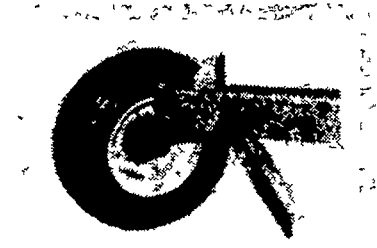


WETMORE  
DIVISION

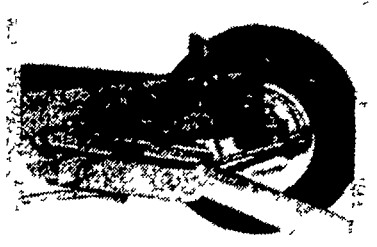
6, 8, 10, 11 & 12  
TONS

## WAGON GEARS

Designed with ample safety factor to meet load capacity.  
Built-in trailability for tractor speed roadability.

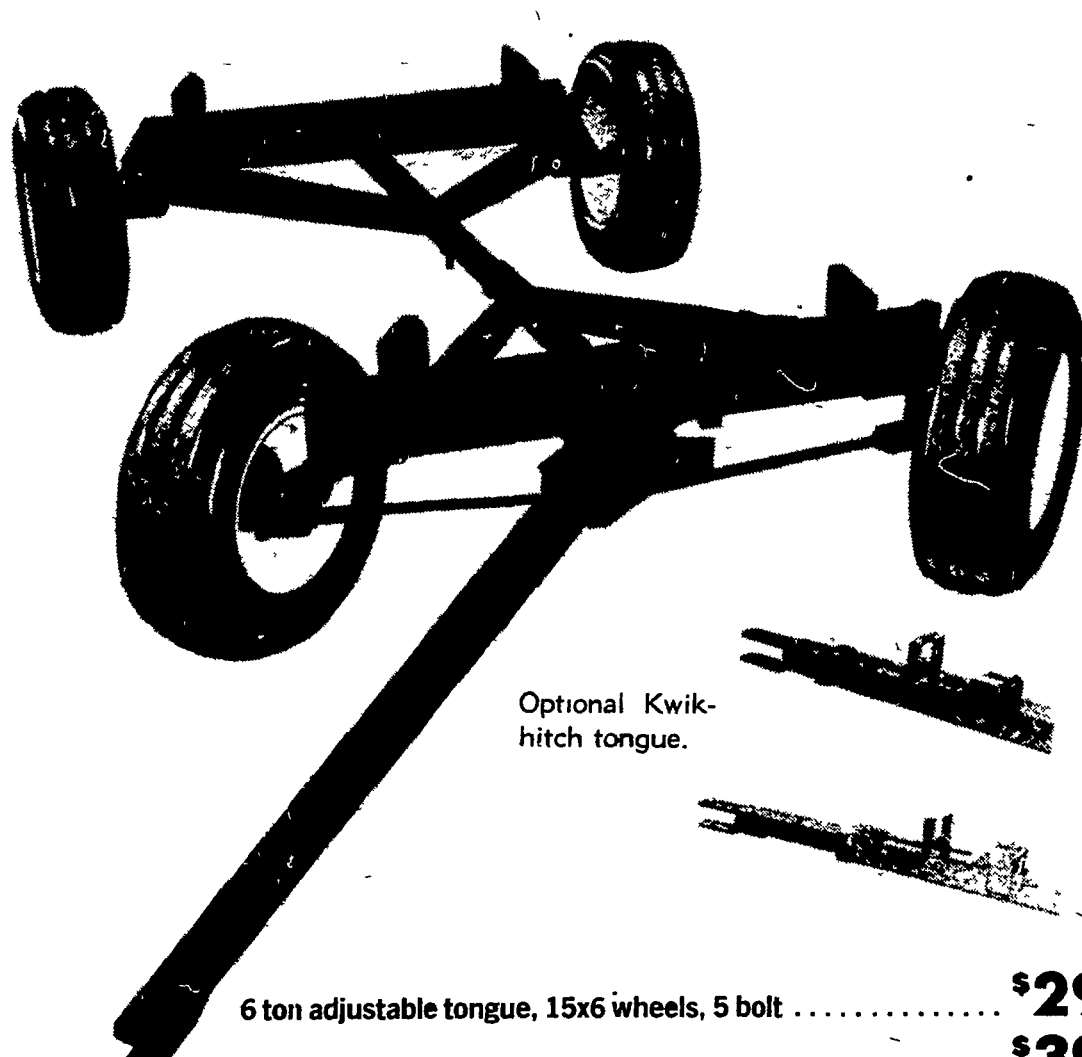
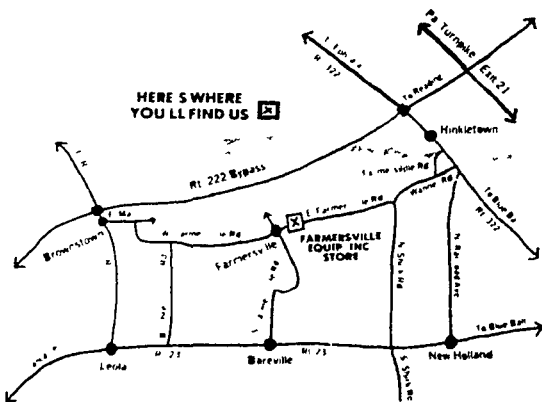


5, 6, and 8-bolt hubs and reinforced axles for greater structural strength 7 1/2" tread to provide more stability Bolter stakes adjustable from 38" to 42" to fit any hauling job



Short turn radius and front steer for easy maneuverability Tapered roller bearings to reduce friction and prolong life of parts.

A FULL LINE OF RUNNING GEARS, RUGGEDLY BUILT AND DESIGNED FOR FORAGE BOX, GRAVITY BOX, FERTILIZER TANK, AND ANY OTHER HAULING WORK IN YOUR FARM OR INDUSTRY.



Optional Kwik-hitch tongue.

- 6 ton adjustable tongue, 15x6 wheels, 5 bolt ..... \$295
- 8 ton adjustable tongue, 15x6 wheels, 6 bolt ..... \$395
- 10 ton quick hitch tongue, 15x8 wheels, 6 bolt ..... \$495
- 11 ton tandem quick hitch tongue, 15x8 wheels, 6 bolt ..... \$695
- 12 ton quick hitch tongue, 15x10 wheels, 8 bolt ..... \$695

FARMERSVILLE EQUIPMENT  
INC.

RD 4, Ephrata, PA

717-354-4271

NEW  
HOURS

Mon., Tues., Wed., Fri. - 7:30-5:30  
Thurs. - 7:30-9:00  
Sat. - 7:30-3:00