

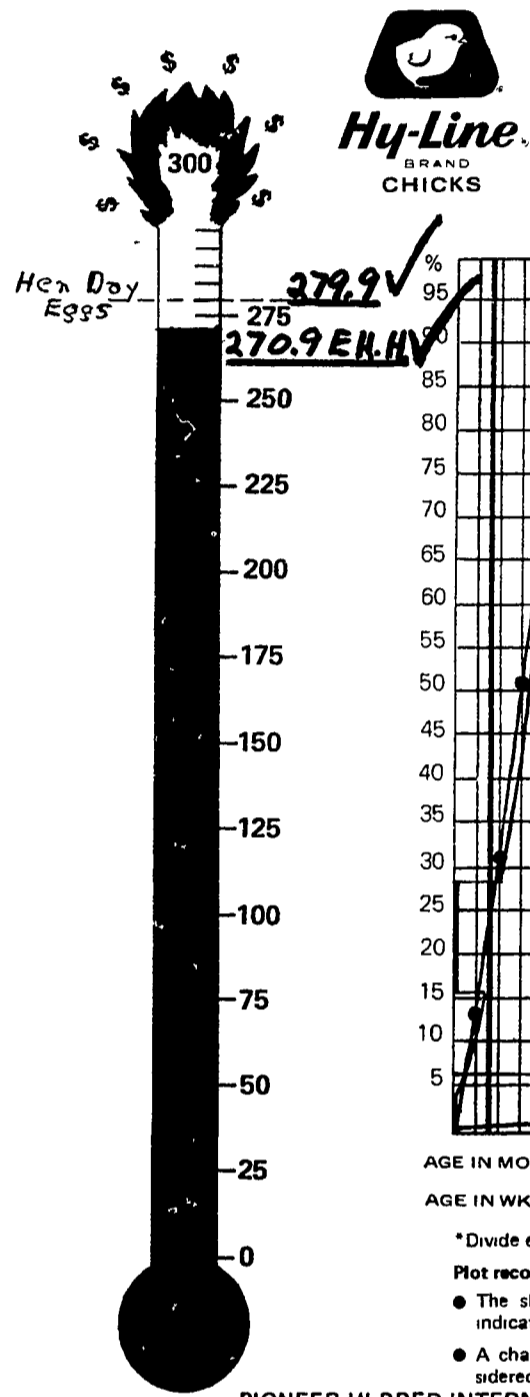


# A "Third" Record on Hy-Line W-36

By

## Hy-Cross Company

Each as Good or Better than the prior one

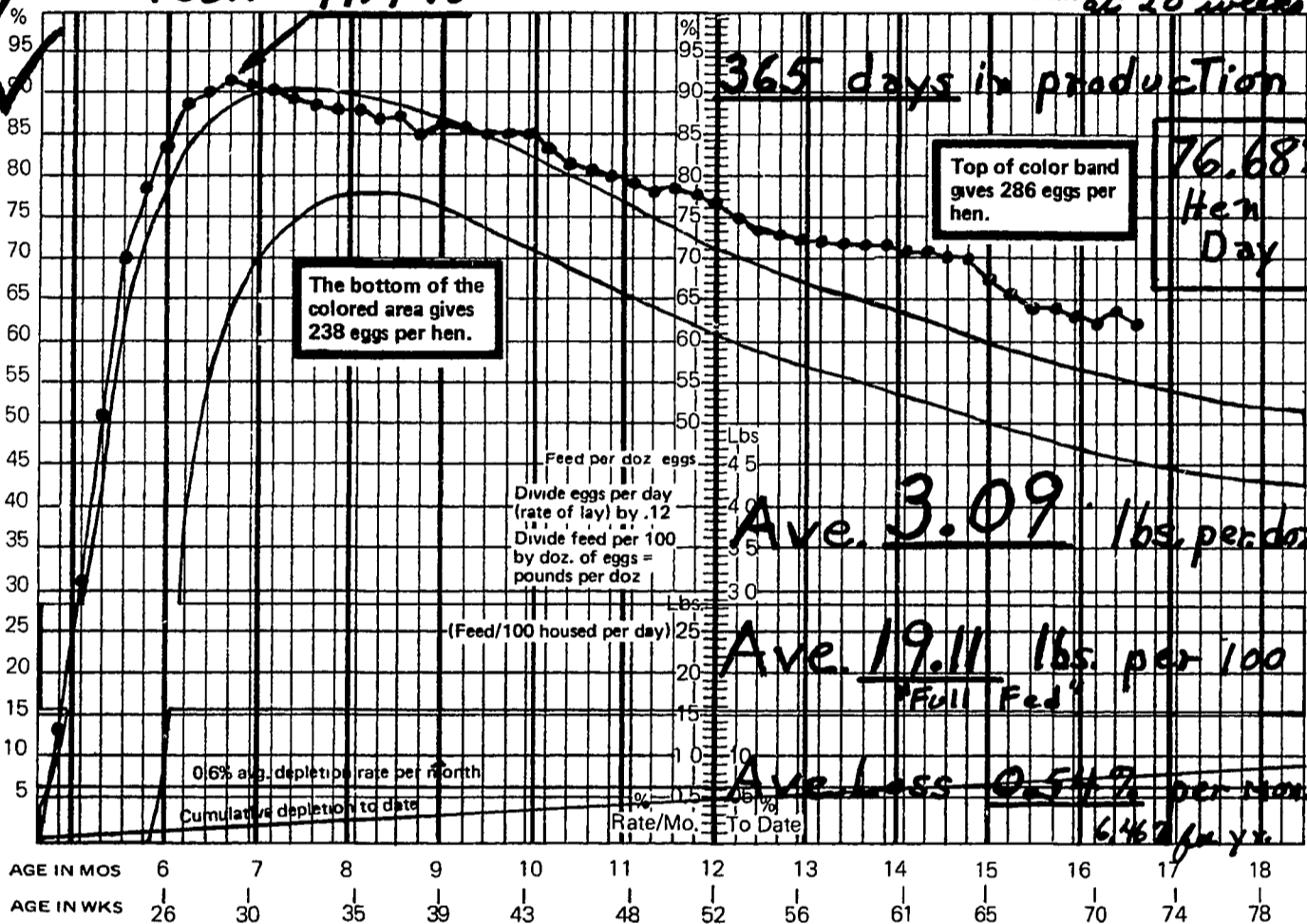


### W-36 HEN HOUSED\* RECORDS GUIDE

Graph Your Flock's Records on These Guides

(Hen-housed rate of lay, % depletion per month and cumulative, feed per 100 birds housed per day; feed per dozen eggs, and eggs per hen housed to date)

Name HC-49  
 Flock size, code E-36  
 Housed on 7/30/76  
 Dates at 20 weeks of age



AGE IN MOS 6 7 8 9 10 11 12 13 14 15 16 17 18  
 AGE IN WKS 26 30 35 39 43 48 52 56 61 65 70 74 78

\*Divide eggs or feed per day or number of birds dead by original number of birds housed, and multiply by 100 to give record to plot  
 Plot records at the midpoint of each week  
 ● The slanting per cent production curve begins after 8 months. It indicates the normal decrease in rate of lay  
 ● A charted production line parallel to the colored band may be considered normal after 8 months of age

● A declining line compared to the colored band indicates deteriorating performance after 8 months of age. Try to determine management change or disease control necessary to help the flock  
 ● A climbing charted production line indicates improving performance after 8 months of age. The very best flocks go above the blue area  
 ● Feed used per dozen increases with age of flock, after peak production

PIONEER HI-BRED INTERNATIONAL, INC  
 HY-LINE INTERNATIONAL DIVISION

Printed in U.S.A. H5956 (Rev. 8/74)

## TRY THE NEW HY-LINE W-36

LOCAL RECORDS ARE PROOF OF PERFORMANCE LEADERSHIP IN:

- ★ EGG NUMBERS
- ★ EGG QUALITY
- ★ EGG VALUE
- ★ FEED EFFICIENCY
- ★ LIVABILITY
- ★ PERSISTANCY
- ★ VERY STRONG SHELLS



### TRY THE NEW HY-LINE W-36 NOW!

#### CONTACT



**HY-CROSS COMPANY**  
 4037 Swamp Road  
 Doylestown, Pa. 18901  
 (215) 348-2661

**ARTHUR DETWEILER**  
 Box 84  
 Danboro, Pa. 18916  
 (215) 348-3117

**FRANK M. LOEW, JR.**  
 RD 4  
 Quakertown, Pa. 18951  
 (215) 536-3356

**BEN K. STOLTZFUS**  
 384 E. Main St.  
 Leola, Pa. 17540

**DON KELSEY**  
 130 Ashlea Gardens  
 New Holland, Pa. 17557  
 (717) 354-7479

**IN NEW JERSEY**  
**EMAN RITTER**  
 Vineland, N.J.  
 (609) 697-0271

Hy-Line is a brand name. Numbers and letters refer to varieties.  
 Registered Trademarks of Pioneer Hi-bred International, Inc., Des Moines, Ia., U.S.A.