

Hog Markets

Lancaster Market

Lancaster, Pa.
Monday, April 13, 1978
HOGS: Barrows and gilts mostly 2.00 lower.
BARROWS AND GILTS: Few; US 1 210-235 lb. 48.50-49.00; US 1-2 200-240 lb. 47.50-48.00; Few 48.10-48.35; US 1-3 200-255 lb. 47.00-47.50; Few 46.50-47.50; US 2-3 225-265 lb. 45.50-46.50.
SOWS: US 1-3 450-600 lb. 38.00-39.50; Few to 39.85; 350-450 lb. 36.50-38.00.

New Holland Feeder Pig

New Holland, Pa.
Wednesday, April 5, 1978
Feeder Pigs
Today 1519
Last Wednesday 808
TREND: Compared to last Wednesday feeder pigs 5.00-10.00 lower. All pigs weighed on arrival and sold by the hundredweight.
US 1-2 30-40 lb. 126.00-142.00; 45-55 lb. 114.00-136.00; 55-70 lb. 100.00-117.00.
US 2-3 35-45 lb. 101.00-139.00; 45-60 lb. 100.00-117.00.
Utility 20-35 lb. 80.00-95.00; 45-60 lb. 50.00-66.00.



Lancaster Auction

Lancaster, Pa.
Wednesday, April 5, 1978
HOGS: Barrows and gilts steady to firm.
BARROWS AND GILTS: US 1-2 200-235 lb. 48.00-48.60; Few US 1 210-240 lb. 48.75-49.00; US 1-3 200-250 lb. 47.00-48.00; Few US 2-3 245-265 lb. 46.00-46.75.

St. Louis Hogs

Thursday, April 6, 1978
HOGS: 5000 - Barrows and gilts moderate early, later rather slow; mostly 75 higher instances 1.00 higher early. US 1-2 200-240 lb. 46.75-47.00; about 400 head early 47.25; US 1-3 200-250 lb. 46.50-46.75.
SOWS: 50-1.00 lower. US 1-3 300-450 lb. 41.50; 450-500 lb. 42.50-43.00; Over 500 lb. 43.50-44.50.

Indianapolis Hog

Thursday, Apr. 6, 1978
HOGS: 1500 - Currently 600 under. Barrows & gilts moderately active, steady to firm.
US 1-2 210-235 lb.; 46.50-47.00, 25 head 47.25; US 1-3 200-250 lb.; 46.00-46.50.
Sows: Moderately active, steady to 15 higher.
US 1-3 350-400 lb.; 41.50-42.00; 450-600 lb. 44.00-44.75; small lot 45.00.

New Holland Hog

New Holland, Pa.
Monday, April 3, 1978
Hog Auction
Today 1335
Last Monday 1314
TREND: Compared to last Monday barrows and gilts 2.50-3.50 lower.
BARROWS AND GILTS: US 1-2 200-240 lb. 47.00-47.25; Few US 1 210-240 lb. 48.00-48.50; US 1-3 200-250 lb. 46.50-47.00; several early 46.00-46.50; Few lots mostly US 3 210-240 lb. 44.50-45.50.

Peoria Hogs

Thursday, April 6, 1978
HOGS: 2000 - Barrows and gilts active, 1.00 higher.
US 1-2 200-240 lb. 47.00-47.50, about 95 head; US 1-3 200-250 lb. 46.50-47.00, 47.75; US 2-3 250-280 lb. 45.50-46.50; US 3-4 280-300 lb. 44.50-45.50.
SOWS: Uneven, under 500 lb. steady-50 lower, over 500 lb. weak-1.00 lower.
US 1-3 350-500 lb. 42.00-43.00; 500-650 lb. 43.50-44.50, few 43.00.

Vintage Hog

Saturday, April 1
Reported 1216 head.
No. 1-2 200-240 lb. 47.25-48.25; No. 2-3, 200-240 lb. 46.25-47.25; 31 head at 48.50-49.00; sows 37.75-39.50; boars 30.00-36.75; heavy straights 260 to 315 lbs. 40.00-45.75; lightweights, 135 to 180 lbs. 34.50-42.50.
Wednesday, April 5
Reported 429 head.
No. 1-2, 300 to 245 lbs. 47.50-48.50; No. 2-3, 200 to 240 lbs. 46.50-47.50; sows 34.00-39.00; boars 29.00-38.75; heavy straights, 300 to 340 lbs. 38.50-39.00; lightweights, 165 to 180 lbs. 38.00-42.85.

Lancaster Grain

Friday, April 7, 1978
These prices are made up of the average prices quoted by a number of participating area feed and grain concerns. It should be noted however, that not every dealer or broker handles each commodity. All prices are per bushel except ear corn and soybean meal which are per ton.
The average prices quoted Friday, April 7 are as follows:

	Bid+	Offered+
Ear Corn	61.50	71.00
Shelled Corn	2.54	2.74
Barley	2.01	2.30
Oats		
Local	1.33	1.60
Western	1.90	2.05
Wheat	2.99	3.20
Soybeans	6.20	
Soybean Meal		230.00

New Holland Dairy

New Holland Sales Stables
Wednesday, April 5
Reported receipts of 157 cows, 136 heifers, and 5 bulls. Market stronger than last week's market.
Load of Pa. fresh 500-820; load of Pa. fresh 445-900; load of Pa. fresh 540-1125; load of Pa. fresh 510-940; load of N.Y. purebred and grade, fresh 660-1000, springers 750-1500; local cows 450-800; springing heifers, grade 450-750; purebred 800-1125; open heifers 210-400; bred heifers 475-575; bulls 390-470; herd dispersal of 35 head in all stages of lactation 460-750; herd dispersal of 20 head in all stages of lactation 390-800.

xxx
How about a topper for making vegetables more interesting? This one uses leftover Easter eggs beautifully. Pour medium white sauce over cooked vegetables (green beans, asparagus, cauliflower, broccoli) then sprinkle with a mixture of sieved hard-cooked egg yolks, chopped parsley and chopped hard-cooked egg whites. If you want to get fancy, you can call the dish Green Beans Mimosa, the name for this topper.

Lancaster Farming, Saturday, April 8, 1978-3

Futures Trading

(Closing Bids as of Thursday, April 6, 1978)

	Chicago Cattle	Chicago Hogs	New York Maine Potatoes	Chicago Fresh Eggs
April	53.00	47.30		44.35
May			5.54	45.20
June	51.85	52.00		48.60
July		52.10		50.75
Aug.	50.95	50.80*		
Sept.				57.90
Oct.	50.25	47.30		
Nov.			5.53	
Dec.	50.35	48.20		

Trend - Cattle are higher, Hogs are higher, Potatoes are higher, and Eggs are higher.

Market Provided by Commodity Department
Reynolds Securities, Inc.

Chicago Grain Futures

(Closing Bids as of Thursday, April 6, 1978)

	Corn	Wheat	Soybeans	Soybean Meal
May	2.59½	3.19½	6.88½	175.30
July	2.57	3.20	6.75½	177.40
Aug.			6.62½	176.50
Sept.	2.51½	3.22½	6.32¾	171.00
Oct.				167.00
Nov.			6.17¼	
Dec.	2.54¾	3.27½		168.00
Jan.			6.23	

Trend - Corn is lower, Wheat is lower, Soybeans are mixed, and Soybean Meal is lower.

Market Provided by Commodity Department
Reynolds Securities, Inc.

U.S. Inspected Livestock Slaughter

Estimated Daily Livestock Slaughter
Under Federal Inspection

	CATTLE	CALVES	HOGS	SHEEP
Week to Date	542,000	69,000	1,206,000	82,000
Same Period Last Week	553,000	62,000	1,153,000	78,000
Same Period Last Year	547,000	76,000	1,284,000	128,000

HAY, STRAW & CORN — SALE —

Every Friday at 12 Noon

GREEN DRAGON MARKET & AUCTION

RD No. 4 Ephrata, Pa. 717-733-2334

1 mile North of Ephrata on N. State St.

Out of State Buyers - Cash or Certified Check Only.

J.M. HOOBER Inc. LANCASTER STOCKYARDS

Your Livestock Broker
Serving you since 1895.

- Up-to-date market information.
- We sell slaughter cattle, fat hogs, calves, lambs, feeder pigs.
- Suppliers of feeder cattle.

NEXT FEEDER PIG SALE - APRIL 11, 1978

Consign your livestock to J.M. Hooper Inc., where it will receive personal care and service.

Call Us:

Phone (717) 397-6191 - Home 569-2084

Small Stock Division 397-6191 -

Home 626-5659

CONTACT: JOHN CAMPBELL

Atglen, PA
(215) 593-5529

GARY MCGEE

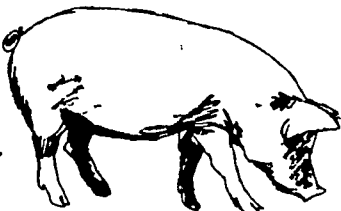
Spring Run, PA
(717) 349-2340

DAN DERR

Conowingo, MD
(301) 378-3280

ATTENTION CATTLE FEEDERS

Do you want to make buying your stockers and feeders easy. It can be very simple. Just call and give us your order. All orders filled to your exact specifications. Call us anytime. We can be very helpful.



NEXT FEEDER PIG SALE TUESDAY, APRIL 11 - 1 P.M.



Consign all your feeder pigs to Walter M. Dunlap & Sons where they will be handled by a capable and experienced staff.

FEEDER PIGS RECEIVED FROM 6 A.M. TO 11 A.M.

WALTER M. DUNLAP & SONS LANCASTER STOCK YARDS

Consignors can get state tags at our office, thereby saving 25¢ marketing expense.

For Further Information, Call 717-397-5136