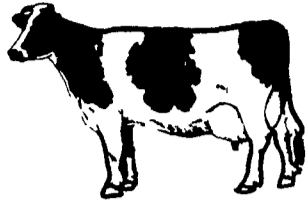


Both celery and zucchini lose calories when they're cooked.

WILDMEAD MILKING HERD DISPERSAL



Located on Rt. 414, 5 miles east of Liberty, Pa. 11 miles from Canton, Pa. and 35 miles north of Williamsport, Pa. Watch for Auction arrows.

FRIDAY, APRIL 21

1:00 P.M.

55 — REGISTERED HOLSTEINS — 55

Interstate tested, pregnancy examined, charts day of sale. Herd vaccinated and accredited. Catalogues available.

1977 DHIA herd ave. 15,863 M. 629 F. 4.0%

1976 BAA 101.5 scheduled to be reclassified March 22nd.

Selling 19 dau. of R.O.R.A. Elevation!!! 8 carrying service to Wayne-Springs Fond Apollo 6 s/w/c.

Other Sires represented: Gent - 7; Charmcross - 5; Pencor - 4; Ivanhoe Star - 3; Transmitter - 3; Rebel - 3; First Million - 3; Typeblazer - 2; Sunnyside Standout - 1. Service Sires: Elevation - 3; Wayne-Springs - 8; Jerry - 10; Job - 3; Charmcross - 1, and others.

Some features:

- A real good Elevation (GP-82 at 2 yrs) with 2-2 365D. 15,910M. 4.0 642F. (inc) and proj. for 17,858M. 684F. this year. Bred to Eng-Amer Ivanhoe Jerry. Dam had 500F. with 4.6%. at 1-11. Gr'dam GP-82 Gent with 116,850M. 4.0 4834F. to date, 3rd dam a Silver Rocket with 5 rec. over 600F. with 4.0 test.

- An upstanding First Million with 1-10 proj. for 11,767M. 3.8 452 s/w/c to Wayne-Springs. Dam GP-80 Gent with 4-8 300D. 16,650M. 5.0 826F. (never under 4.7) Mat. sir. sells by Elevation with 3-3 14,599 4.3 627F. Same bloodline as 1st Elevation listed.

- A fancy Charmcross with 2-0 288D. 16,579M. 3.7 617F. and proj. for 3-0 19,607M. 679F. s/w/c to Wayne-Springs for Sept. sells with her stylish dam by Elevation with 3-0 325D. 16,290M. 4.2 686F. and proj. for 5-0 19,291M. 736F. s/w/c again to Charmcross for Oct!! Gr'dam by Kingpin with 2 records over 600F. Mat. sister by Lucky also sells bred to Elevation and dams 2 full sisters sell - one with 600F. at 2-1, the other fresh first time. Both s/w/c to Wayne-Springs for Oct.

- A fancy Pencor with a beautiful udder with 1-10 339D. 12,475 3.5 438F. Fresh 42 days milking 80 lb. and just bred to Wayne-Springs. Her V.G. mat. sister by Elevation sold for \$2600. - in 76 Sire Power Sale. Dam GP-84 Galaxy with 6-6 368 19004 4.0 767F. Sells with a GP-83 mat. sister by Typeblazer bred to Jerry.

- A fancy Charmcross (GP-80 2 yrs) with 2-1 285 12,221 4.8 584F. proj. for 624F. at 3-0 and bred to Jerry. Dam is VG-86 Gent with 678 (4.5) and 636 (4.8) and a mat. sister to the Pencor above. (A mat. sister sold for \$1850 in 77 Sire Power Sale by Transmitter.)

- A real good Rebel dau. (GP-81 2 yr.) from a tremendous cow family with 2-10 285 12,221M. 4.8 584F. Proj. for 3-9 19,611M. 739F. and bred to Elevation! Sells with dam, GP-83 Gent with 5-3 363 20,160 4.4 888F. (inc) and due after sale to Elevation. (never a record under 623F!) Gr'dam is GP-80 Hernus dau. with 5-9 353 20,984 4.0 837F. (inc) and lft. to date of 160,659M. 6,863F. 4.3%. Mat. sister sells by Elevation with 2-3 326D. 15,351M. 3.8 580F. Dam sells with 2 full sisters one GP-82 with 4 rec. over 600F. up to 4-6 3-11 16,398 4.3 712F. due May to Elevation. The other is GP-80 with 3-0 299D. 15,749M. 4.5 703F. and proj. for 722F. at 4-0 and bred to Job. Sells with an Elevation dau. just fresh.

- A tremendous VG-88 Maroy Ivanhoe Leader with 6-4 362 19,323M. 4.2 800F. just fresh looking good! Next dam VG-86 Gent with 574 4.0%. at 2-1.

- A fancy Elev. (GP-83 at 2 yrs) with 3-1 365 23,349M. 800F. due saletime. (1-11 15,560M. 565F. 3.6) Full sister sells proj. for 2-0 12,912M. 4.1 535F. and due Sept. to Wayne-Springs. Their dam selling is a GP-84 Ivanhoe Star with 5-11 365D. 24,269M. 3.5 833F. (inc) proj. for 21,795M. this year.

- A GP-83 Ivanhoe Star with 4-3 356D. 20,251M. 3.9 794F. just fresh milking 102 lbs. Dam a Woody dau. with 6-10 18,045M. 3.6 653F. Gr'dam had a lft. of 172,623M. 6,618F. Sells with a dau. by Elevation proj. for 2-0 11,046M. 4.3 476F. and bred to Jerry.

- A nice Crocker proj. for 2-10 20,717M. 803F. Dam by Ivanhoe Star lost in 1st lactation. Gr'dam lft. of 190,989M. 7,634F. with 6 rec. over 600F. and calved every year from 2-2 to 14-2!!

- A GP-81 Charmcross with 2-8 371 12,702M. 4.8 614F. and proj. at 3-10 for 16,385M. and 626F. Bred to Jerry. Her nice Elevation dau. sells proj. for 463F. at 1-10 and s/w/c to Jerry. Dam VG-86 Gent that has never made under 600F. (615, 685, 664, 668, 756)

- A real nice Charmcross (N.C) with 2-0 365 16,742M. 3.8 631 and just fresh. Dam sells is GP-83 Ivanhoe Star with 4-0 294D. 18,524M. 3.8 695F. Other rec. of 691,656. Proj. for 17,710M. & 622F. and bred to Job. Gr'dam an image with 112,544M. 4,509F.

- A GP-80 Howacres Grandier with 4-11 365D. 21,668M. 3.8 848 and due before saletime. Dam is an Ex. Gent in herd of Jay Heisy with 603 at 2-11 and is a mat. sister to Ivanhoe Star just mentioned.

- A nice Elevation with 2-3 368 15,994M. 3.9 618F. due before sale. Dam had 3-8 317D. 18,122M. 3.4 627F. Gr'dam by Ivanhoe Star with 5-0 334D. 16,457M. 3.5 570F. 3rd. dam with 9-10 367 16,695M. 4.1 708F.

Sales Mgrs. Note:

Due to the lack of facilities to accomodate their expanding herd, Gordon & Roy have decided to disperse their milking animals. This is a tremendous herd. It is young, good uddered and a straight 4.0% test!! The Schanbachers have always sold a good cow, as is evidenced above, but the herd has always maintained its good quality and depth of pedigree. There has not been a cow culled for low production in the past 2 years, and at the time of this writing they were sending 5200 out of 45 cows (13 of these 1st calf heifers!!) Several real good cow families sell and we eagerly await the results of this years classification, as we are confident many scores will be raised. Don't miss this tremendous opportunity!

Owners:

GORDON & ROY SCHANBACHER
Liberty, Pa. 717-324-2101

Auctioneer:

Arlow Kiehl

Pedigrees:

Bill Kent

Sales Mgr.

Wood's Auction Service

Gordon Wood & Son

Mansfield, PA. 717-549-4901

Farm Bureau suggests pricing milk on its nutritional value

PARK RIDGE, Ill. — Farm Bureau is going to explore the prospects for pricing milk on its nutritional value.

The board of directors of American Farm Bureau Federation, after studying an AFBF dairy advisory committee recommendation, approved an exploratory conference with Secretary of Agriculture Bob Bergland who has stated that milk should be priced on its protein content.

On the basis that additional nutrition would be provided to the consumer if the minimum federal SNF

(solid not fat) standards were raised, the board asked that the current standard of 8.25 per cent for all milks be increased to 8.5 per cent on whole milk and 10 per cent for lowfat and skim milk.

The board also authorized a study on alternatives to the current price support program.

In other actions, the AFBF board supported continued funding for the special milk program for school children and asked that the serving size in the school milk program be restored to a full eight ounces.

Noting that 1977 was the second consecutive year in which brucellosis in cattle declined, the board supported a strong state-federal brucellosis eradication program.

Other topics on which the board took action after studying the committee's recommendations included the use of sodium caseinate in food, countervailing duties on dairy imports, cooperatives, inspection at ports of entry and foot-and-mouth disease.

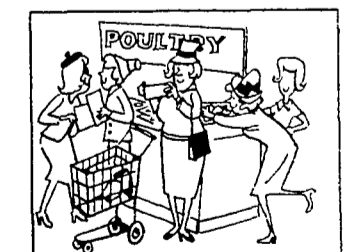
Course covers mail advertising

UNIVERSITY PARK — Sales by mail now total \$40 billion a year for goods purchased from direct mail advertising. Many consumers abhor the deluge of third-class mailings offering various goods but advertisers don't lack for customers. Shut-ins, the elderly, and those without transportation appreciate being able to shop at home.

However, shopping at home with mail order catalogs isn't always as convenient as the ads lead one to believe; the Council of Better Business Bureaus Inc., received more complaints about mail orders than any other problem. Chief complaints from consumers are they don't receive merchandise within a reasonable length of time, inquiries about ordered merchandise are ignored, and refunds are not received.

What can one do if an item he has ordered through a catalog, newspaper or magazine has failed to live up to the advertiser's claims, or perhaps even failed to arrive? First, one must understand his rights in the marketplace. These rights, along with the advertising standards and guidelines are given in Penn State's Correspondence Course on The Consumer and Advertising. Illustrated lessons explain honest, and what to do if it isn't how to complain and receive action on complaints, and timely information on food advertising and children's advertising.

To order a copy of this course, one can write Advertising, Box 5000, University Park, Pa. 16802. Make one's check for \$4.00 payable to Penn State.



Companion shopping is the best way to stretch your food budget. Compare the cost of packages of meat poultry or fish sufficient to provide a complete meal for your family. Then, plan your menus accordingly.

PUBLIC SALE CATTLE & MACHINERY THURS. EVENING, APR. 20

7:30 P.M.

Located 7 miles East of Mifflintown 2 miles west of McAlisterville, Juniata Co. Turn off Route 35 at Oakland Mills.

MACHINERY 7:30 P.M.—SHARP

JD 14T baler, (no kicker); IH #45 baler; NH #69 baler; JD #246 - 3 pt. corn planter; MF #46 - 4 row corn planter, A-1 cond.; Ferguson 3 pt. - 2 row corn planter; JD 8 ft. disc; IH 8 ft. disc; JD 12 ft. harrow; JD 10 ft. tractor harrow; JD #130 - 3 pt. 4-14 trip back plows; IH 2 - 14 trail plows; NI #201 PTO spreader; Ford 3 pt. 2 row cultivator.

ALSO AT THE SAME TIME AND PLACE, DAYTON SAUERMAN, DUE TO QUITTING FARMING, WILL SELL THE FOLLOWING EQUIPMENT:

JD #336 BALER W/KICKER, LIKE NEW:

Case #555 haybine; IH #15 semi-mount rake; Century 300 gal. sprayer, w/16 roller pump, plastic tank; 2 JD bale wagons.

**16 Head-10 Week Old Pigs-Following Machinery
105 HEAD FEEDER & FAT CATTLE—8:00 P.M.**

Char. Hol. X, Herefords, Angus, Angus X, Black WF and Hol. steers and heifers ranging in weight from 250 to 1200 lb.; 1 Hol. bull, 600 lb.; 1 black WF bull, 900 lb. All cattle in excellent cond.

**TERMS—CASH LUNCH
SALE HELD UNDER COVER**

Owner

R. LAVON AUKER

Phone 463-2360

Long Bros., Aucts.
Phone 527-4784

PUBLIC SALE FARM MACHINERY & TOOLS SATURDAY, APRIL 22

at 10:00 A.M.

Located approx. 1½ mile off Rt. 74 north of Delta, Pa. near the Norman Wood Bridge (Rt. 372) along the Slab Rd., York Co., Pa.

Farmall 656 diesel fully equipped, very good cond.; Farmall 300 row crop tricycle front end; Farmall H; Int. 3 pt. hitch 4-14" bottom plow; Int. 2 pt. fast hitch 3-14" bottom plow; Int. #45 baler w/ thrower; Int. 13 disc drill; Int. forage harvester w/3 heads; NI rolabar hay rake; Int. table blower w/pipe; Grove 40 ft. elevator w/ motor; JD transport disc; Int. disc harrow; 2 spring tooth harrows, 1 tractor set; 2 rubber tire wagons w/false end gates & high bale racks; 2 PTO manure spreaders, 1 Int. & 1 NH; Shultz flail chopper; fast hitch rotary mower; meadow harrow; land roller; 10 ft. cultipacker; Int. fast hitch corn planter; Int. manure loader; Int. haybine; drag elevator; corn workers for H tractor; Int. 1 row corn picker; snow blade; cement mixer; Jamesway shuttle type barn cleaner for 50 stalls in good cond.; lg. 30x30 wagon shed w/grain bin storage to be torn down and moved in 90 days; 2 anvils; ext. cords; work benches; storage cabinets; window sash; vise; approx. 2 wagon loads of small misc. items too numerous to mention.

Terms: Cash or approved check.

MR. & MRS. J. RAY SCOTT

Delta, Pa., Owners

Robert L. Sechrist, Auctioneer Ph. 382-4379

Anderson & Warner, Clerks

Not responsible for accidents

Refreshments by McKendree Church