

Hog Markets

Lancaster Market

Lancaster, Pa.
Monday, March 27, 1978
HOGS: Barrows and gilts 1.00-1.50 higher.
BARROWS AND GILTS:
US 1-2 200-260 lbs. 49.75-50.50; US 1 200-240 lb. 51.00-51.25; US 1-2 200-260 lb. 49.00-49.75.

Lancaster Auction

Lancaster, Pa.
Wednesday, March 29
HOGS: Barrows and gilts steady, instances 50 lower.
BARROWS AND GILTS:
US 1-2 200-240 lb. 49.50-49.85; US 1-3 200-260 lb. 48.50-49.50.

Vintage Hog

Saturday, March 25
Reported 724 head.
No. 1-2 210 to 240 lbs. 49.00-49.75; No. 2-3, 210 to 240 lb. 48.00-49.00; few head 51.25-53.00; sows 35.00-39.25; boars 31.25-35.75; lightweights, 150 to 175 lbs. 39.50-43.25.

Wednesday, March 29
Reported 650 head.
No. 1-2 205 to 230 lbs. 48.75-49.75; No. 2-3, 205 to 245 lbs. 47.85-48.75; sows 38.75-40.25; boars 32.25; heavystraights, 270 to 300 lbs. 42.75-45.25; lightweights, 145 to 170 lbs. 35.00-43.00.

Lancaster Feeder Pig

Lancaster, Pa.
Tuesday, Mar. 28, 1978
Feeder Pigs

Today 1308
Two Weeks Ago 1465

TREND: Compared to two weeks ago feeder pigs mostly 15.00 higher, some sales US 2-3 25-50 lb. 20.00 higher. All pigs weighed on arrival and sold by the hundred weight.

US 122 30-40 lb. 127.00-137.00; 60 Head 32-36 lb. 138.50-141.00; 40-50 lb. 118.00-132.00; 50-60 lb. 97.50-116.00; 90 head 50-52 lb. 122.00-124.00; 60-73 lb. 90.00-97.00; 30 Head 79 lb. 76.00.

US 2-3 25-49 lb. 115.00-126.50; 20 head 26-36 lb. 136.00-137.00; 49-50 lb. 87.00-102.00; 25 Head 50 lb. 110.00; Few Head 74-83 lb. 70.00-78.00.

St. Louis Hog Market

Thursday, March 30
HOGS: 7000 - Barrows & gilts moderate, 50-75 lower.
US 1-2 210-240 lbs. 47.50-47.75; US 1-3 200-260 lb. 47.00-47.50.
SOWS: Steady to 50 lower.
US 1-3 300-450 lb. 42.50-43.00; 450-500 lb. 43.50-44.00; Over 500 lb. 44.50-45.50.

Indianapolis Hog

Thursday, March 30, 1978
HOGS: 2000 - Barrows & gilts moderately active, 75-1.00 lower. US 1-2 210-235 lb. 47.25-47.50; US 1-3 200-265 lb. 46.50-47.25.
Sows: Moderately active, mostly steady instances 25 lower on wts over 500 lb. Few US 1-3 330-400 lb. 41.50-42.50; 450-600 lb. 44.00-45.00.

Peoria Hog Auction

Thursday, March 30
HOGS: 4000 - Currently 400 over estimate. Barrows & gilts fairly active, opening 75 to mostly 1.00 lower.

US 1-2 200-240 lb. 47.00-47.50, near 200 head 47.75; US 1-3 200-250 lb. 46.50-47.00.

SOWS: 50-1.00, instances 1.50 lower. US 1-3 350-500 lb. 43.00-44.00; 500-650 lb. 44.00-45.00.

Lancaster Grain

Friday, Mar. 31, 1978
These prices are made up of the average prices quoted by a number of participating area feed and grain concerns. It should be noted however, that not every dealer or broker handles each commodity. All prices are per bushel except ear corn and soybean meal which are per ton.

The average prices quoted Friday, Mar. 31 are as follows:

	Bid+	Offered+
Ear Corn	59.00	70.00
Shelled Corn	2.50	2.70
Barley	2.00	2.20
Oats		
Local	1.32	1.64
Western	1.88	2.08
Wheat	2.90	3.10
Soybeans	6.60	
Soybean Meal		234.10



SEPARATE RETURNS SOMETIMES HELP

If either you or your spouse had large medical or dental expenses in 1977, it may be to your advantage to file separate federal tax returns. The medical-dental expense deduction (except for half of the first \$300 of medical insurance premiums) is reduced by 3 per cent of adjusted gross income. By filing separately, the 3 per cent would be applied against a lower income, thereby allowing a larger deduction. But work it out both ways (separate and joint returns) to be sure you're choosing the right method for you.

Futures Trading

(Closing Bids as of Thursday, March 30, 1978)

	Chicago Cattle	Chicago Hogs	New York Maine Potatoes	Chicago Fresh Eggs
April	50.87	45.80	3.87	43.00
May			4.68	43.95
June	49.95	49.65		45.90
July		49.70		
Aug.	49.07	47.95		
Oct.	48.15	45.20		
Nov.			5.39	
Dec.	48.07	45.85		

Trend - Cattle are lower, Hogs are lower, Potatoes are lower, and Eggs are lower.

Market Provided by Commodity Department Reynolds Securities, Inc.

Chicago Grain Futures

(Closing Bids as of Thursday, March 30, 1978)

	Corn	Wheat	Soybeans	Soybean Meal
May	2.51½	3.03½	6.73	171.50
July	2.52¾	3.04½	6.79	174.80
Aug.			6.70½	175.60
Sept.	2.53	3.10	6.21	169.00
Oct.				166.00
Nov.			6.05	
Dec.	2.55	3.16½		165.80

Trend - Corn is higher, Wheat is higher, Soybeans are lower, and Soybean Meal is mixed.

Market Provided by Commodity Department Reynolds Securities, Inc.

U.S. Inspected Livestock Slaughter

Estimated Daily Livestock Slaughter Under Federal Inspection

	CATTLE	CALVES	HOGS	SHEEP
Week to Date	553,000	62,000	1,144,000	78,000
Same Period Last Week	583,000	68,000	1,164,000	87,000
Same Period Last Year	548,000	69,000	1,205,000	114,000

HAY, STRAW & CORN — SALE —

Every Friday at 12 Noon



GREEN DRAGON MARKET & AUCTION

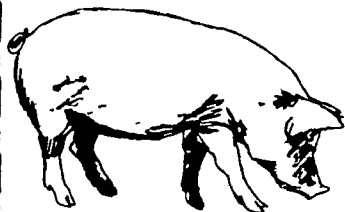
RD No. 4 Ephrata, Pa. 717-733-2334

1 mile North of Ephrata on N. State St.

Out of State Buyers - Cash or Certified Check Only.

ATTENTION CATTLE FEEDERS

Do you want to make buying your stockers and feeders easy. It can be very simple. Just call and give us your order. All orders filled to your exact specifications. Call us anytime. We can be very helpful.



NEXT FEEDER PIG SALE TUESDAY, APRIL 11 - 1 P.M.



Consign all your feeder pigs to Walter M. Dunlap & Sons where they will be handled by a capable and experienced staff.

FEEDER PIGS RECEIVED FROM 6 A.M. TO 11 A.M.

WALTER M. DUNLAP & SONS

LANCASTER STOCK YARDS

Consignors can get state tags at our office, thereby saving 25¢ marketing expense.

For Further Information, Call 717-397-5136

J.M. HOOBER Inc. LANCASTER STOCKYARDS

Your Livestock Broker Serving you since 1895.

- Up-to-date market information.
- We sell slaughter cattle, fat hogs, calves, lambs, feeder pigs.
- Suppliers of feeder cattle.

NEXT FEEDER PIG SALE - APRIL 11, 1978

Consign your livestock to J.M. Hooper Inc., where it will receive personal care and service.

Call Us:

Phone (717) 397-6191 - Home 569-2084

Small Stock Division 397-6191 -

Home 626-5659



CONTACT: JOHN CAMPBELL

Atglen, PA (215) 593-5529

GARY McGEE

Spring Run, PA (717) 349-2340

DAN DERR

Conowingo, MD (301) 378-3280

National Reputation — Local Service