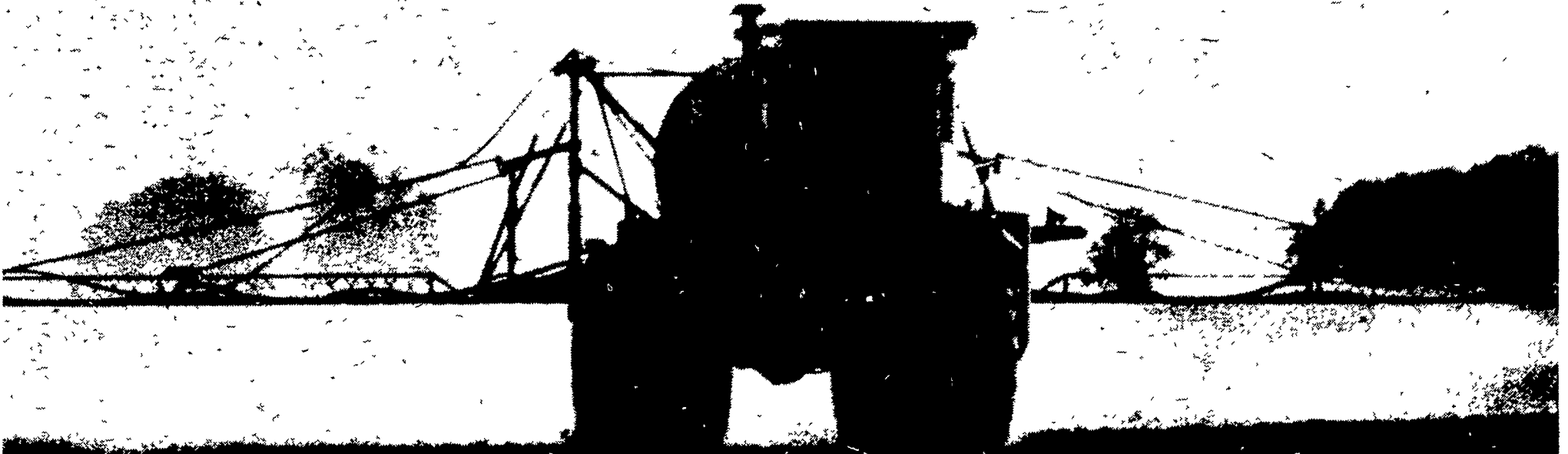


Corn pre-emergence

When it's down to:



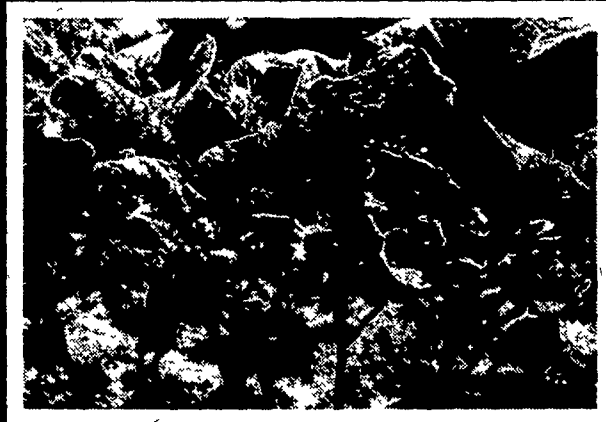
Banvel[®]
+ Lasso^{®*}

**No carryover
to soybeans**



atrazine
combinations

**Possible carryover
to soybeans**



Which are you using?

For pre-emergence weed control in corn **without** carryover to soybeans, it's Banvel + Lasso herbicides . . . in your field working as long as you need them. But not next year . . . when you don't!

Applied any time after planting (NO incorporation!) up until three-inch corn or two-leaf weeds, kills most broadleaf and grassy weeds.

No carryover of Banvel-Lasso. So when

you've taken off corn, go to winter wheat or oats . . . or in spring rotate to soybeans.

Works beautifully . . . with no carryover . . . reasons why use of Banvel herbicide for all applications has more than doubled over the last three years.

Order now from your chemical supplier. Any questions? Call toll-free on the Velsicol Herbicide Hot Line: 800-621-4129 (Illinois callers: 800-972-8381).



*Lasso[®] is a registered trademark of Monsanto Company. The Banvel + Lasso tank mix is cleared for use in Colorado, Illinois, Indiana, Iowa, Kansas, Kentucky, Michigan, Minnesota, Missouri, Montana, Nebraska, New York, North Dakota, Ohio, Pennsylvania, South Dakota, Utah and Wisconsin.

Before using any pesticide, read the label.

VELSICOL[®]