

Hog Markets

Lancaster Market

Monday, March 20, 1978
Lancaster, Pa.
HOGS: Barrows and gilts 2.00-2.25 lower.
BARROWS AND GILTS: Few US 1 210-240 lb. 48.75-49.00; US 1-3 200-250 lb. 47.25-47.75; Few US 1-2 200-235 lb. 47.75-48.00.
SOWS: US 1-3 350-500 lb. 37.00-38.50; Few 38.50-39.25.

Peoria Hog Auction

Thursday, March 23, 1978
HOGS: 2000 - Currently 700 under estimate. Barrows and gilts active, opening fully 1.00, instances 1.50 higher.
US 1-2 200-240 lb. Mostly 48.50, about 22 head 48.75-49.00; US 1-3 200-250 lb. 48.00-48.50.
SOWS: 1.50-2.00 higher. US 1-3 350-500 lb. 43.50-44.50, 500-650 lb. 44.50 to mostly 45.00; 1 small lot 45.50.

New Holland Hog

New Holland, Pa.
Monday, March 20, 1978
Hog Auction
Today 1643
Last Monday 1937
TREND: Compared to last Monday barrows and gilts mostly 1.00 lower.
BARROWS AND GILTS: US 1-2 210-235 lb. 48.25-48.75. Couple lots US 1 205-230 lb. 49.00-49.60; US 1-3 200-250 lb. 47.50-48.25.

Lancaster Auction

Lancaster, Pa.
Wednesday, March 22, 1978
HOGS: Barrows and gilts 50-1.00 higher.
BARROWS AND GILTS: US 1-2 200-240 lb. 48.75-49.10, Few US 1 205-235 lb. 49.25-49.50; US 1-3 200-250 lb. 47.50-48.60.

Vintage Hog

Saturday, March 18
Reported 1379 head.
No. 1-2, 210-240 lb. 48.00-49.00; No. 2-3 210-250 lb. 47.00-48.00; 30 head at 49.25-50.25; sows 36.25-40.25; boars 33.00-34.25; heavystraights 265-315 lbs. 42.00-46.25; lightweights, 160-175 lbs. 33.00-38.00.

Wednesday, March 22
Reported 885 head.
No. 1-2 210-235 lb. 47.50-48.50; No. 2-3 200-230 lbs. 46.25-47.50; sows 34.75-39.00; boars 34.00-35.25; heavystraights, 300-380 lb. 38.25-38.75; lightweights 165-175 lbs. 35.00-38.00.

St. Louis Hog Market

Thursday, March 22, 1978
HOGS: 6000 - Barrows and gilts fairly active, 1.00-1.25 higher. US 1-2 210-240 lb. 48.25-48.50; US 1-3 200-250 lb. 48.00-48.25.
SOWS: Mostly 50-1.00 higher. US 1-3 300-450 lb. 42.00-42.50, 450-500 lb. 42.00-43.50, Over 500 lb. 44.50-45.00.

New Holland Feeder Pig

New Holland, Pa.
Wednesday, March 22, 1978
Feeder Pigs
Today 1305
Last Wednesday 1012

TREND: Compared to last Wednesday feeder pigs under 50 lb. 5.00-10.00 higher, small supply over 50 lbs. steady to 5.00 higher. All pigs weighed on arrival and sold by the hundred weight.
US 1-2 25-45 lb. 117.00-127.00; 45-60 lb. 98.00-119.00; 60-70 lb. 91.00-99.00.
US 2-3 28-45 lb. 100.00-122.00; 45-66 lb. 84.00-100.00, 45 head 75-85 lb. 75.00-76.00.
US 3 65 head 38-47 lb. 84.00-89.00.

Indianapolis Hog

Thursday, March 23, 1978
HOGS: 1500 Barrows and gilts very active, 1.00 instances 1.50 higher on mostly weights over 240 lb. US 1-2 210-235 lb. 48.25-48.50, 40 head 48.75; US 1-3 200-250 lb. 47.75-48.25. Shipment US 2-4 Near 270 lb. 47.00.

SOWS: Moderately active, mostly steady instances 25 lower on wts over 500 lb. US 1-3 300-450 lb. 41.50-43.00; 450-600 lb. 43.00-43.75.



Lancaster Grain

Friday, Mar. 24, 1978
These prices are made up of the average prices quoted by a number of participating area feed and grain concerns. It should be noted however, that not every dealer or broker handles each commodity. All prices are per bushel except ear corn and soybean meal which are per ton.

The average prices quoted Friday, Mar. 24 are as follows:

	Bid+	Offered+
Ear Corn	60.50	66.50
Shelled Corn	2.44	2.62
Barley	1.85	2.10
Oats		
Local	1.31	1.61
Western	1.77	1.98
Wheat	2.90	—
Soybeans	6.85	—

Health and trade rules queried

CHICAGO, Ill. - Livestock health regulations should not be used as trade impediments, spokesmen for the U.S. and Canadian livestock industries agreed here last month during a meeting called by Livestock Marketing Association's Livestock Health Council.

Leading cattlemen and marketmen met with animal health officials of both nation's governments for a wide-ranging discussion of mutual areas of concern, ranging from the two countries' various disease testing requirements to the need for industry cooperation in any regulatory program.

The special meeting held Feb. 16 was called by the Council "because we think that it's vital to bring livestock industry on both sides of the border together with each other, and with those who regulate them," said Council Chairman Raymond Schnell.

Futures Trading

(Closing Bids as of Thursday, March 23, 1978)

	Chicago Cattle	Chicago Hogs	New York Maine Potatoes	Chicago Fresh Eggs
April	53.02	47.91	3.85	43.25
May			4.58	44.60
June	52.02	50.82		45.50
July		50.72		
Aug.	51.10	47.90		
Oct.	50.05	43.77		
Nov.			5.45	
Dec.	50.67	43.95		

Chicago Grain Futures

	Corn	Wheat	Soybeans	Soybean Meal
March				
May				
July				
Aug.				
Sept.				
Oct.				
Nov.				
Dec.				
Jan.				

No market available due to Holiday

U.S. Inspected Livestock Slaughter

Estimated Daily Livestock Slaughter Under Federal Inspection

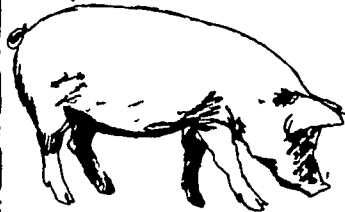
Week to Date	CATTLE CALVES	HOGS	SHEEP	
583,000	68,000	1,164,000	87,000	
Same Period Last Week	588,000	70,000	1,208,000	84,000
Same Period Last Year	562,000	74,000	1,293,000	94,000



CONTACT:
JOHN CAMPBELL
Atglen, PA
(215) 593-5529
GARY MCGEE
Spring Run, PA
(717) 349-2340
DAN DERR
Conowingo, MD
(301) 378-3280

ATTENTION CATTLE FEEDERS

Do you want to make buying your stockers and feeders easy. It can be very simple. Just call and give us your order. All orders filled to your exact specifications. Call us anytime. We can be very helpful.



NEXT FEEDER PIG SALE TUESDAY, MARCH 28 - 1 P.M.



Consign all your feeder pigs to Walter M. Dunlap & Sons where they will be handled by a capable and experienced staff.

FEEDER PIGS RECEIVED FROM 6 A.M. TO 11 A.M.

WALTER M. DUNLAP & SONS LANCASTER STOCK YARDS

Consignors can get state tags at our office, thereby saving 25¢ marketing expense.

For Further Information, Call 717-397-5136

HAY, STRAW & CORN — SALE —

Every Friday at 12 Noon



GREEN DRAGON MARKET & AUCTION
RD No. 4 Ephrata, Pa. 717-733-2334
1 mile North of Ephrata on N. State St.
Out of State Buyers - Cash or Certified Check Only.

J.M. HOOBER Inc. LANCASTER STOCKYARDS

Your Livestock Broker
Serving you since 1895.

- Up-to-date market information.
- We sell slaughter cattle, fat hogs, calves, lambs, feeder pigs.
- Suppliers of feeder cattle.

NEXT FEEDER PIG SALE — MARCH 28, 1978

Consign your livestock to J.M. Hooper Inc., where it will receive personal care and service.

Call Us:
Phone (717) 397-6191 - Home 569-2084
Small Stock Division 397-6191 - Home 626-5659