

Swine housing pro's and con's

NEW HOLLAND — The Garden Spot Adult Farmer program will sponsor a meeting on swine finishing housing systems on March 21, 1978, at 7:30 p.m., in the agriculture classroom of the Garden Spot High School, New Holland. All area farmers and agribusinessmen are welcome. The meeting will look closely at two systems, the modified open front Nebraska plan system and the automated environmental controlled system designed by swine service specialists.

The program will include slides illustrating these two systems, reports from farmers and servicemen on their effectiveness, management tips on the operation of these facilities, construction and cost estimates, design features, and suggestions on how these systems can be used in breeding operations.

An added feature at the beginning of the meeting will be a film on bloody scours - how it effects hogs, how it spreads, and how it can be controlled.

Sharing their experiences with the Nebraska Plan system will be Harold Kurtz

from the Manheim area who finishes 1200 head in his facility; Donald Mahlandt from Purina, who services many-area producers using these types buildings, and other local producers who have just constructed the modified open front building.

Robert Gregory from Pennfield will illustrate and describe the features of the automated environmental controlled system. Gregory works very closely with the

Joel Habegger operation in Frystown that has a finishing capacity for 2400 head as well as 460 sow farrowing operation in the totally controlled environmental facility.

Refreshments will be served. For further information contact Donald Robinson, adult farmer advisor, Eastern Lancaster County School District at 717-354-0480.

'Pick-Your-Own' book available

DOVER, Del. — More farmers and gardeners are turning to "U-Pick" operations to market seasonal fruit and vegetable crops. Though this is generally a fast economical way to market fresh produce, there are many management decisions to make before opening up such an operation.

The University of Delaware Cooperative Extension Service's publication "Management of Pick-Your-Own Marketing Operations" covers all

aspects of running a "U-Pick" business in the northeastern U.S. region. This 66-page booklet includes tips on planning, organizing, using publicity, considering competition, identifying the market and analyzing results for these marketing operations.

Graduates named from USMI

CEDAR RAPIDS, Iowa — Eric Fogg, from Rehoboth Beach, Del., and Raymond Hillard of Milroy, Pa., received diplomas from the Vigortone Sales Management Institute held in Cedar Rapids, Iowa.

Fogg and Hillard are both field managers with Vigortone Products Company. They completed an intensive one-week course of study involving livestock

ARLINGTON, VA. — The Poultry and Egg Institute of America and American Farm Bureau Federation have urged President Carter to use his authority to bring the nationwide coal strike to an end, warning that failure to do so could result in "food shortages, hardships and economic losses."

PEIA Vice President Richard Ammon had already alerted USDA officials as to the growing problem in the hopes of convincing USDA to waive

overtime fees to inspectors during this energy crisis. The Department is currently assessing the situation both in Virginia and in other states most severely affected by the coal strike.

In a telegram sent to the White House last month, Farm Bureau President Allan Grant said it will take at least 21 days for coal to reach public utilities once production is resumed, and reserves in Pennsylvania will run out in 23 days. In-

diana reserves stand at 37 days, Grant said, and Ohio stocks are down to 42 days.

Grant pointed out that reduction or curtailment of coal-dependent electrical service would have an immediate impact on food production and distribution throughout the nation.

Grant said, "It appears essential to Farm Bureau that action be taken at once."

Edgar J. Stull, Auctioneer

PUBLIC SALE

OF HOLSTEIN MILKING HERD & FARM EQUIPMENT

Located in Carroll County, 2 miles North of Taneytown, MD, 6 miles South Littlestown, PA along Route 194, first farm on Brown Road on:

WEDNESDAY, MARCH 22

At 12 Noon

56 HIGH GRADE HOLSTEINS

30 day health tests, pregnancy checked. 48 young cows in milk nearly all first & second calf, a few third calf; nearly all fresh or close springer, 5 springing heifers, 2 bulls, one year old, 1 open heifer. This herd is home raised and sired by A.B.S. and bred to A.B.S. sired by such R Maple, Premier, Playmaker, Lime Hollow, Elevation Oak, G. J Modelmaker. A good young producing herd in full milk flow.

DAIRY AND FARM EQUIPMENT

750 gal. Sunset milk tank with 5 hp compressor, good condition; portable tank washer, 2 wagons with bale bodies, 1 new; 1 wagon with 30" grain sides, No. 6 New Idea two-row pull type corn picker, tooth harrow, 2 16' hay bunks, 98 electric fence.

TERMS: Cash and good checks. Lunch stand. Not responsible for accidents. Maryland sales tax to be collected on all taxable items.

Owners

LAKEE & LINDA CHRISTMAN

4206 Brown Road
Taneytown, MD
Phone 301-756-2920

LARGE MACHINERY AUCTION

THURSDAY, MARCH 30, 1978

10:00 A.M.

Location: Take Rt. 222 to Refton, midway between Quarryville and Lancaster, Pa. (Take Brenneman Road at Graybill Bros. Garage).

IH 986 w/cab and air, 184 hrs.; Gleaner F II diesel combine with 4 row narrow head and 13' platform; IH 4 row stalk shredder; 3 pt. #55 IH 13 tooth chisel; 12 tooth Athens trailer chisel; IH 56 planter (no fertz.); 14' Bush Hog offset disc; AC 15' #1200 field cultivator; IH 17' vibra chisel with leveling rake; IH 710 4 bottom 18" auto plow.

ALL OF THE ABOVE WAS NEW IN 1977

(The following Off one farm in Adams County)

1968 IH 806D w/1400 hrs.; 1972 IH 664 utility diesel 1000 hrs. (same as IH 544); 1975 MF 235 diesel 290 hrs.; JD LA w/starter, plow, cultivator; IH 6 row front mounted cultivator; IH No. 700 4x16 reset plow; IH No. 55 11 tooth trailer chisel; IH 370 12' 6" disc; Brillion 12' cultipacker; Owatonna backhoe fits most skid loaders; POTATO EQUIPMENT - JD 2 row level bed digger; Farquer 2 row planter, Haines 4 rubber roll cutter w/feed elevator and duster; Boggs 18" grader-sizer rolls and auto bagger w/motor; GMC 6 cyl. diesel w/6" irrigation pump; Wisc. 4 cyl. w/4" pump; old 400 gal. Myer high pressure sprayer with hand gun; G.E. portable welder w/6 cyl. engine; Winpower 35/20 alternator.

ADDITIONAL

TRACTORS-COMBINES-EQUIPMENT

JD 630 w/3 pt. PS; JD 70D excellent w/3 bottom trip beam trailer plow; JD 730 diesel w/3 pt. PS; JD 4020 diesel w/wide front; IH 1206 w/wide front dual PTO's; IH 706 diesel w/wide front; IH 140 w/cultivator; clean; IH 230 w/cultivator; Farmall 560 gas w/12 roll NI mounted picker; AC D21 w/3 pt. and PTO; AC 190XT Series III w/cab and air; (2) Case LA (one on steel). Good cab for 856 Farmall.

COMBINES: IH 615 hydra w/grain and corn head; Gleaner Model K w/grain and 2 wide or 3 narrow corn heads; Uni 702 gas w/710 combine; JD 95 w/cab; MF No. 44 quick tach head; JD 3 row narrow corn head for 55 combine; JD 4 row narrow corn head for 95 or 105 combine; set of 20.8x38 duals; set of 18.4x34 duals; stack of IH suitcase weights; JD and IH rear weights; plus lots more. Burnt 5000 Ford diesel, Burnt 861 gas; parts of Farmall M and C.

FREE MEAL TICKET TO EVERYONE REGISTERED BEFORE 11:00 A.M.

YOU KNOW WHEN I HAVE SALE WE SELL, NOT APPRAISE. WE WILL ADD TO THIS LIST BUT NOT TAKE AWAY.

Terms by:

RAYMOND B. LEAMAN

RD #1 Willow Street, Pa.
717-464-2778

Blaine Rentzel, Auct

PUMPKIN CENTER FARMS HOLSTEIN DISPERSAL

WEDNESDAY, MARCH 29, 1978

STARTING AT 11:00 A.M.

Location: At the farm in Perry County, about 6 miles northwest of Newport, Pa. West from Newport, Pa. on Route 849 to first hard road West of Wila, turn right, then left on Center road.

100 REGISTERED & GRADE HOLSTEINS

90 REGISTERED

Certified — Accredited — Vaccinated
Pregnancy Examined — Treated for IBR.
DHI Records

Classified, and will be Reclassified before sale. Rolling Herd Avg. 15,281 milk, 4%, 607 fat. 61 milking age, 14 bred heifers, 6 yearlings, 13 calves, 6 bulls, 2 service-age.

Herd is bred for an even flow of milk thru the year. 5 just fresh, 3 due May, 6 June, 13 July, 9 August, 14 September, including bred heifers.

A FEW FEATURES SELLING

6 Elevations: 1 V.G. 86 - 18,554 milk, 4%, 749 fat., 1 yearling and 1 younger.

8 Kingpin granddaughters with records to 22,072 milk, 852 fat. A G.P. Charm - 19,577 milk, 4%, 780 fat. Dam of yearling Elevation. An El Toro on 2% list as a 2 yr. old - Kingpin son selling. An Irvington Pride Admiral heifer from Kingpin dam. Next dam V.G. 86 Elevation.

18 in one family from a V.G. granddaughter of Maplebend Dean King Posch with 192,351 milk.

MANY OTHER TOP BRED ONES

Other sires include Kingpin, Jet Stream, Lucky, Gent, Transmitter, Merry King, King Ivan, etc.

Service sires are N.E.B.A. and Curtiss including Elevation, Astronaut, Euster, Ivanhoe Chief, etc.

A young herd only a few over 5 yrs. old. Large majority are 2, 3, & 4 yrs. old.

Cows are quiet and used to tie stalls and free stalls. Many good records in progress.

"4 STRAWS OF

ROUND OAK RAG APPLE ELEVATION SELL"

WEAVERLINE ELECTRIC FEED CART SELLING
Lunch At Sale Sale in heated tent. Catalogs

Owners:

MR. & MRS. HOWARD D. BARKLEY

R.D. 1, Newport, Pa 17074

V ART KLING Auct
FRED M. NAUGLE, Pedigrees
R 7, Carlisle, PA 17013

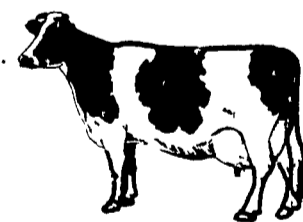


PUBLIC AUCTION

FRIDAY, MARCH 24

Starting Time 1:30 P.M.

To be held at the Merle C. Klinger farm located 2 miles west of Beaver Springs, Snyder County, along Old Rt. 522 (turn off New Rt. 522 first blacktop west of Snook's Restaurant to second farm).



SELLING

A FINE HOLSTEIN HERD

This fine home raised Holstein herd of 16 good sized animals, sired by a well chosen selection of A.B.S. sires has produced a balance of body size, type, dairy character which promotes good production coupled with above average test. Among the 16 there are 5 fresh or close springers. Others in various stages of lactation. All animals will have T.B. and Bangs Health Charts and eligible animals will be pregnancy checked.

DAIRY EQUIPMENT

Esco 350 gal. Bulk tank; Surge Alamo 30 plus milker pump, lines, etc.; New 30 gal. electric water heater; 2 surge milker units; 2 stainless steel strainers; 2 stainless steel milk buckets; double stainless steel wash vat; one 36" and one 20" electric barn fans; 9 tie jacks.

Terms: CASH

Owner

MERLE C. KLINGER

RD 1, Beaver Springs, Pa.
717-658-4153

Earl Eash, Auctioneer
New Berlin, Pa. 17855
717-966-2569