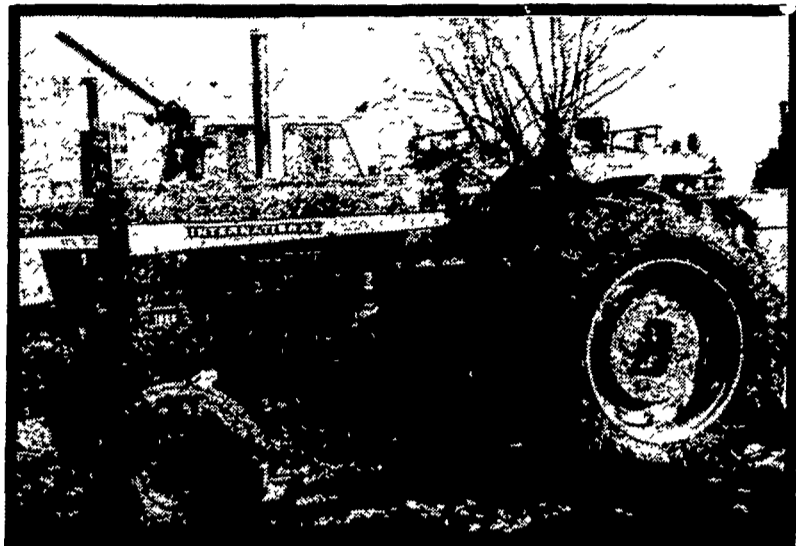
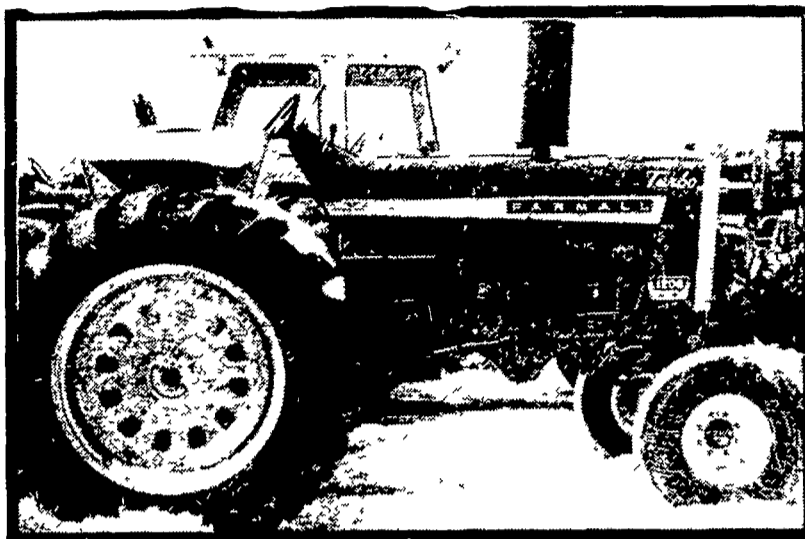


HOOBER RECONDITIONED EQUIPMENT



F1026D Hydro - 1970, 2700 Hrs.,
New Hydro Unit, new 20.8x38 Tires.



F1206D - 1967, 18.4x38 Tires (80%)
New Engine Overhaul, New Clutch,
New Brakes and Rear End.

HOOBER'S RECONDITIONED EQUIPMENT HAS BEEN THROUGH OUR SHOP WHERE EXPERIENCED MECHANICS HAVE CHECKED IT, REPAIRED WHAT NEEDED REPAIRED, AND GENERALLY PUT IT IN A-1 CONDITION, SO...

HOOBER'S RECONDITIONED EQUIPMENT IS READY TO WORK WHEN YOU ARE!!!

RECONDITIONED TRACTORS

- | | |
|--------------------------------|---------------------------|
| MF 1155 w/duals, 28 x 38 | F 1466D w/duals, 23 x 34 |
| JD 4020 diesel | F 1066D w/cab |
| MF 165, new paint | IH 4366 4WD - 600 hrs. |
| Int. F1026D hydro w/ new tires | F4166 w/3 pt. hitch & PTO |
| F706 diesel, new paint | F 460 gas |
| F656 diesel | F 450 gas |
| I 544 gas w/loader | Super C w/loader & cult. |
| I 656 diesel | F 100 diesel hydro. |
| F 806 diesel | F1456 w/duals |
| F 1206 diesel | |

KRAUSE ROCKFLEX DISCS LOVE ROCKS

FROM 12'6" TO 30'
110 LB. BLADE TO 210 LB. BLADE

RECONDITIONED TILLAGE

PLOWS

- IH 710 6-F, 16" auto
- IH 710 6-F, 16" Spring trip
- IH 560 6-F, 16"
- IH 550 5-F, 16"
- IH 155 rollover, 5-F, 16"
- IH 531, 3-F, 14" mtd.
- IH 194 1-F, for Super A tractor

DISCS

- Bushog 25' wingfold
- Bushog 14' heavy duty
- Krause 1588 18' single wing, rockflex
- IH 470 12'
- Krause 1428, 24' 10" rockflex
- Athens offset disc, 10'
- Deere 330 wingfold, 20' 10"
- IH 37 11' new blades

Miller Offset Disc - 10 Ft. w/Leveling Cylinder

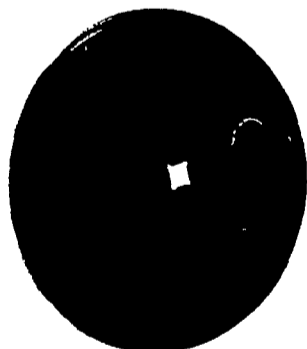
CALL PARTS DEPARTMENT

CALL US, COULD BE WE HAVE IT.

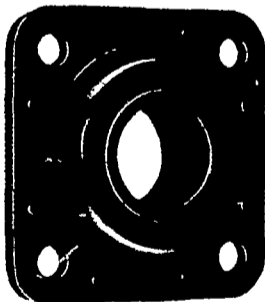
"QUALITY AT THE RIGHT PRICE"

★ ★ ★ ★ TILLAGE SPECIALS ★ ★ ★ ★ UP TO 50% OFF

DISK BLADES



	List	SPECIAL
18" 10 gauge (7/8)	9.85	\$6 ⁹⁵
18" 10 gauge (1 1/8)	11.20	\$8 ⁵⁰
20" 9 gauge (1 1/8)	14.25	\$10 ⁸⁵
20" 8 gauge (1 1/8)	16.95	\$12 ²⁵
22" 7 gauge (1 1/8)	18.45	\$13 ⁶⁰
22" 6 gauge (1 1/8)	25.70	\$18 ⁷⁰



DISK HARROW BEARING

LIST \$40.00

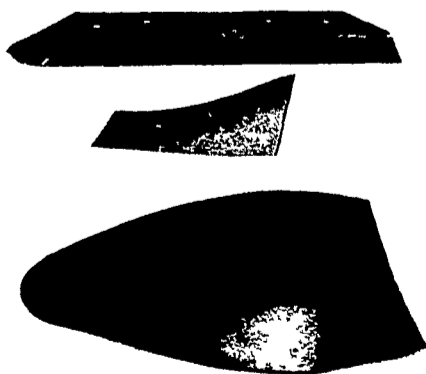
SPECIAL
\$20.00



PLOW COULTER

17" RIPPLED
LIST \$20.80

SPECIAL
\$14.50



SHARES

AS LOW AS **\$4.50** ea.

SHIMS

AS LOW AS **\$7.00** ea.

MOLDBOARDS

AS LOW AS **\$38.95** ea.



TWIST CHISEL POINTS

	LIST	SPECIAL
1/2" Thick 594545R1	5.23	\$4.00
1/2" Thick 594546R1	5.23	\$4.00
3/8" Thick 1235L	8.45	\$7.00
3/8" Thick 1235R	8.45	\$7.00

ALL NEW & USED
PRODUCTS BACKED BY
HOOBER PARTS
& SERVICE

RADIO CONTROLLED TRUCKS FOR BETTER SERVICE
C. B. HOOBER & SON INC.

INTERCOURSE, PENNA.

(717) 768-8231

AUTHORIZED UPS STATION

