

Livestock market and auction news

Lebanon Valley Auction

Fredericksburg, Pa.
March 7, 1978

CATTLE 345. Compared with last Tuesday's market, slaughter steers \$1.50-\$2 higher. Slaughter heifers unevenly steady. Slaughter cows mostly \$2.75-\$3 higher. Few High Choice & Prime 1160-1325 lbs. slaughter steers 48.75-50.00, Choice 2-4, 46.75-48.85, High Good to Low Choice 46.00-47.00, Good 42.00-45.35, Standard 39.50-42.00, few Utility and Low Standard 35.35-39.10. Choice slaughter heifers 39.00-44.50, few High Choice 44.85-46.85, Good 37.35-39.85, few Standard 34.75-36.25. Utility and Commercial slaughter cows 34.00-35.60, few to 37.25, Commercial 3-5, 32.60-35.00, Cutters 33.00-34.10, Canner and Low Cutter 28.75-32.85, Shells 24.25-28.75, few down to 17.50. Choice slaughter bullocks, individual's 43.25 and 43.85, few Good 38.00-42.25, few Standard 35.60-38.25, one Utility at 37.00. Few Yield Grade No. 1, 1430-2185 lbs. slaughter bulls 39.35-43.25.

CALVES 208. Vealers \$2-\$5 higher, spots \$3 higher. Prime vealers, individual's 76.50 and 78.50, few Choice 69.50-77.50, Good 58.50-69.50, few Standard and Good 110-130 lbs. 44.00-55.50, 90-110 lbs. 43.00-48.50, Standard 65-90 lbs. 39.50-45.50, Utility 60-90 lbs. 25.00-38.00. Farm Calves were very active. Holstein bulls 80-120 lbs. 45.00-63.00; Holstein heifers 80-120 lbs. 49.00-74.00; few Beef cross bulls and heifers 75-115 lbs. 41.50-50.00.

HOGS 344. Barrows and gilts 75 cents-\$1.25 higher. US No. 1-2 195-245 lbs. barrows and gilts 49.10-49.75, lot to 50.35, No. 1-3 190-250 lbs. 48.50-49.35, No. 2-3 200-250 lbs. 47.75-48.50, few No. 2-4 275-335 lbs. 42.50-46.50. US No. 1-3 205-615 lbs. sows 38.25-40.50, one at 41.50, few No. 2-3 320-625 lbs. 35.25-38.00. One Boar at 30.00.

FEEDER PIGS 34. Few US No. 1-3 20-35 lbs. feeder pigs 16.00-20.00 per head, few No. 1-3 35-50 lbs. 31.00-35.00, lot Utility 25 lbs at 9.00 per head.

SHEEP 3. Few Slaughter sheep 19.00-22.00.

East Coast Carlot Meats

Princeton, New Jersey
March 8, 1978

Compared to Tuesday's close: Demand for beef remains generally light as reported by USDA. Choice 3 steers generally steady. Choice 3 heifer .50 lower, Prime special fed veal steady. Good and Choice boning veal weak in limited test. Lamb compared to last week generally steady. Fresh pork loins steady, other pork cuts not established.

Steer Beef
4 Loads
Choice 3 550-700 lbs. 7550-7600.

Heifer Beef
4 Loads
Choice 3 500-700 lbs. 7500.
Choice 3 Beef Cuts
10 Loads
Armchucks 90-130 lbs. 6100 steady; rounds, steer 60-85 lbs. 8500; full plates 4900-4950 generally steady.

Good 3 Beef Cuts
Steer hinds 145-190 lbs. 8250 load.

Lamb Carcass
Choice and Prime 3-4
16 Loads
Compared to last week 55 lbs. down 13100-13400 - all generally steady; 55-65 lbs. 12800-13000; 65-75 lbs. 12700-12800; 70-75 lbs. 12500 ltd.
Veal Carcass
Hide On
Prime (special fed) 180-235

lbs. 11800-11900 steady; Good and Choice boning type Northeastern suppliers 65-75 lbs. 74.00-8200, all 1.00 to 4.00 lower; Bulk 7800; 55-64 lbs. 7200-8000, bulk 7600; 45-54 lbs. 7000-7900, bulk 7400; 35-44 lbs. 6800-7600, bulk 7200; 34 lbs down 6600-7400, bulk 7000. Midwest and West Coast suppliers 70-80 lbs. 7800-8000 steady to 1.00 lower; 60-70 lbs. 7600-7800, steady to 1.00 lower; 50-60 lbs. 7300-7500, weak to 2.00 lower ltd 7700; 40-50 lbs. 7100-7300, weak to 2.00 lower ltd 7500; 30-40 lbs. 6900-7100, 1.00 to 2.00 lower.

Fresh Pork Cuts
Loins 14 lbs. down 9300-9350, 14-17 lbs. 9200-9250 steady.
Cured and Processed Meats
1 Load
Skinned hams 16-19 lbs. 9050 firm.

Boneless Beef
9 Loads
90 pct chem lean, fresh 9400-9600; 75 pct chem lean, fresh 7550-load.
Beef Trimmings
50 pct chem lean, fresh load 4950.

Middleburg Auction

Middleburg, Pa.
March 7, 1978

CATTLE 231. Compared with last Tuesday's market, slaughter steers grading Good and Choice \$1.75 to \$2 higher. Slaughter cows \$3 to \$4.25 higher. Choice No. 2-4 1000-1275 lbs. slaughter steers 46.00-48.85, one at

49.25, Good 40.50-44.75, High Good to Low Choice 45.00-46.50, Standard 37.00-40.60. Few Choice slaughter heifers 43.35-45.75, Good 38.75-42.75, few Standard 35.60-39.75. Utility & Commercial slaughter cows 33.00-36.50, couple to 36.75, Cutters 32.00-34.50, Canner and Low Cutter 30.00-32.50, Shells down to 28.25. One Choice slaughter bullock at 44.60, few Good 40.00-42.85. Few yield grade #1 1070-1725 lbs. slaughter bulls 35.00-42.25. Few Good 400-650 lbs. feeder heifers 35.00-38.00.

CALVES 183. Vealers steady to \$3 higher, spots \$5 higher. Choice vealers 65.00-75.00, couple to 78.00, Good 54.00-63.00, few Standard & Good 110-130 lbs. 50.00-53.00, 90-110 lbs. 42.00-50.00, Standard 70-85 lbs. 35.00-42.00, few Utility 65-90 lbs. 20.00-30.00. Farm calves,

holstein bulls 90-115 lbs. 46.00-56.50.

HOGS 657. (Monday, March 6, 1978). Barrows and Gilts 25 cents lower. US No. 1-2 200-230 lbs. barrows and gilts 48.60-49.50, No. 1-3 190-250 lbs. 48.00-48.60, No. 2-3 190-270 lbs 46.00-47.85. US No. 1-3 300-600 lbs. sows 38.00-40.00. Boars 28.75-31.00.

HOGS 69 (Monday, March 7, 1978).

FEEDER PIGS 180. US No. 1-3 20-35 lbs. feeder pigs 28.50-40.00 per head. No. 1-3 35-50 lbs. 36.00-43.00, few lots No. 1-3 80-110 lbs. 46.00-48.00 per head.

SHEEP 3. Not enough of any one grade to establish a market.

NEW HOLLAND SALES STABLES, Inc.

12 Miles East of Lancaster
on Route 23, New Holland, Penna.

WEEKLY
FEEDER PIG
SALE
EVERY WEDNESDAY



Sale to Start Promptly at 1 P.M.

We Will Receive Your Pigs Anytime
From 7 A.M. Wed. Morning

*** NOTICE ***

2nd Annual Feeder Pig Show and Sale
Tuesday Evening, April 4, 1978

State Graded Until 12 Noon.

All pigs inspected by State Approved Veterinarian.
State tags available at our office for you to tag pigs at home to save 25 cents tagging charge.
Tags delivered if you call 717-354-4341 our office in advance.

Calf Sale To Be Held In New Sales Pavilion
Every Thursday At 4:30 P.M.

NORMAN KOLB
717-397-5538

ABE DIFFENBACH
717-393-4464

WE WILL HAUL HAY, STRAW, & GRAIN

To Local Auctions
or Buy Outright
Paid at Scales
MEADOW GREEN
FARMS

Call 717-932-4080
or 717-933-4377

SPECIAL NOTICE

VINTAGE SALE STABLE, INC.

Box 100, Rt. 30
Paradise, Pa
12:30 P.M.

Needs more hay and straw, ear corn and fodder for each Thursday Auction.

Our prices are as good as any sale in the East.

Commission rate - \$1.50 per ton.

For information, contact:

L. ROBERT FRAME

Auctioneer

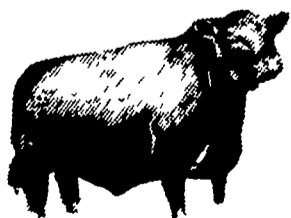
717-442-4181

LEESPORT MARKET & AUCTION, INC.

North end of Leesport

Turn East off Route 61

"WHERE FRIENDS MEET"



BERKS COUNTY'S ONLY WEEKLY
CATTLE & SWINE AUCTION -
WED. at 1 P.M.

FARMER'S MARKET Every Wed.,
12 Noon to 9 P.M.



Garden Fresh Fruits & Vegetables - Bakery Fresh Cakes, Pies and Buns -
Butcher Fresh Meats & Cheese - Sporting Goods - Clothing - Furniture -
Jewelry - Used Items & Collectibles

Phone 215-926-1307

LeRoy Weist & John Weist, Mgrs.

ATTENTION PORK PRODUCERS

Market your hogs at the largest and best livestock market in the East. Market with M. McCoy at the Lancaster Stockyards where your hogs will be handled by a young capable and ambitious staff.

At the March 14 Feeder Pig Sale we will be offering:

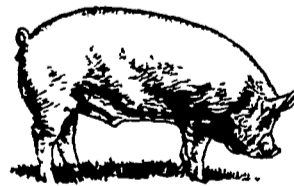
150 FEEDER PIGS from Jerry Rutter, Dover, PA.



SPECIAL NOTICE

A BRED GILT AND PUREBRED
BOAR SALE WILL BE HELD
6:30 P.M.

THURSDAY, APRIL 6, AT THE
LANCASTER STOCKYARDS,
CONSIGNMENTS WELCOME.



NEXT FEEDER PIG SALE
MARCH 14, 1978

Tags will be delivered
to your farm on request.

FOR MORE INFORMATION CALL:
MAIN OFFICE - 717-397-1411
HOG DIVISION - 717-291-8912
ED PROSSER, HOME - 717-259-0988