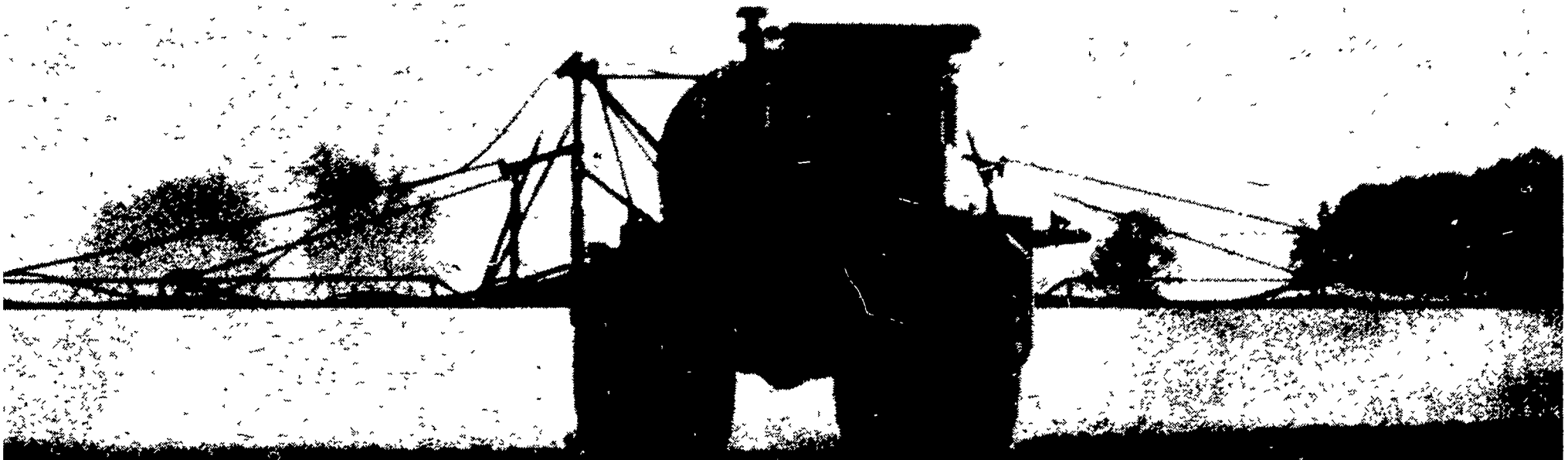


## Corn pre-emergence

# When it's down to:



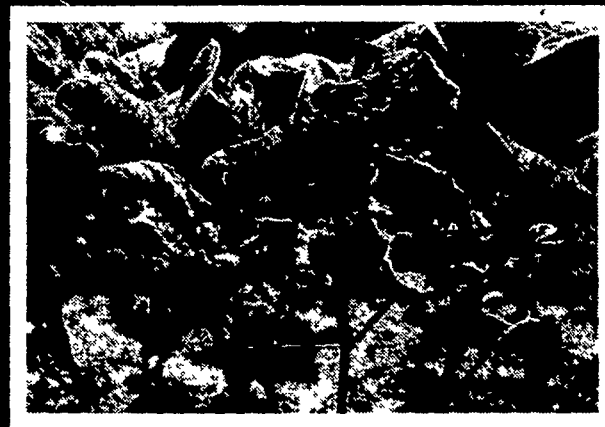
**Banvel<sup>®</sup>**  
+ Lasso<sup>®\*</sup>

**No carryover  
to soybeans**



**atrazine**  
combinations

**Possible carryover  
to soybeans**



# Which are you using?

For pre-emergence weed control in corn **without** carryover to soybeans, it's Banvel + Lasso herbicides . . . in your field working as long as you need them. But not next year . . . when you don't!

Applied any time after planting (NO incorporation!) up until three-inch corn or two-leaf weeds, kills most broadleaf and grassy weeds.

No carryover of Banvel-Lasso. So when

you've taken off corn, go to winter wheat or oats . . . or in spring rotate to soybeans.

Works beautifully . . . with no carryover . . . reasons why use of Banvel herbicide for all applications has more than doubled over the last three years.

Order now from your chemical supplier. Any questions? Call toll-free on the Velsicol Herbicide Hot Line: 800-621-4129 (Illinois callers: 800-972-8381).



\*Lasso<sup>®</sup> is a registered trademark of Monsanto Company. The Banvel + Lasso tank mix is cleared for use in Colorado, Illinois, Indiana, Iowa, Kansas, Kentucky, Michigan, Minnesota, Missouri, Montana, Nebraska, New York, North Dakota, Ohio, Pennsylvania, South Dakota, Utah and Wisconsin.

**Before using any pesticide, read the label.**

**VELSICOL<sup>®</sup>**