

# Livestock market and auction news

## Omaha Cattle

Thursday, March 9

Compared with the previous week's close: Three days of advancing prices left closing levels on slaughter steers mostly \$1.00 higher, and heifers closed \$.75-1.00 higher, instances \$1.25 up. Cows were \$1.00-1.50 higher and bulls firm to \$1.00 higher.

Four day receipts 14,300 as compared 14,000 previous week and 14,200 a year ago. Most interests came into the week in need of cattle for

immediate requirements and trading was active on moderate marketings. The recent upturns pushed prices to the highest point since early December 1975. Best demand centered on Choice and Prime relatively clean 1100-1300 lbs. steers and same grade heifers 950-1100 lbs. which would command the premium price for 700-900 lbs. steer beef and 550-700 lb. heifer carcasses. The overall finish for the week was not particularly attractive, although the midweek run included a fairly liberal percentage choice and several loads

choice and prime. Steers made up approximately 44 per cent and heifers 36 per cent. Cows comprised 11 per cent and feeders 8 per cent.

**STEERS:** At midweek, four loads and part load choice and prime 3-4 1180-1395 lbs. \$48.00-48.50. Choice 2-4 975-1275 lbs. \$46.75-48.00, mainly \$47.00 and above, some mostly choice but quite muddy \$46.50. Mixed good and choice 2-3 950-1250 lbs. \$45.50-47.00, part load 1630 lb. holsteins \$41.00. Good 2-3 \$43.50-46.00. Standard and Good 2-3 \$40.00-42.00.

Average of LS-214, detailed quotations, for

Choice 900-1100 lb. steers this week \$46.90; choice 1100-1300 lbs. \$47.25. average weight steers first three days 1131 lbs. as compared 1133 lbs. previous week. Average weight heifers first three days 981 lbs. as compared 985 lbs. previous week.

**HEIFERS:** Three loads choice and prime 3-4 1008-1153 lbs. \$45.75. Choice 2-4 875-1075 lbs. \$44.25-45.75. Mixed Good and choice 2-3 825-1000 lbs. \$43.00-44.50. Good 2-3 \$39.00-43.00. Small lots standard and good 2-3 \$36.50-38.50.

**COWS:** Utility and commercial 2-4 \$31.00-33.50, few \$34.00-34.50. Canner and Cutter \$27.00-31.00, mixed cutter and utility \$34.00-34.50.

**BULLS:** 1-2 1300-2000 lbs. \$38.00-41.00, individual 1 \$41.50-42.00.

**FEEDERS:** During week, several loads choice fleshy 1025-1050 lb. steers \$46.00-46.50.

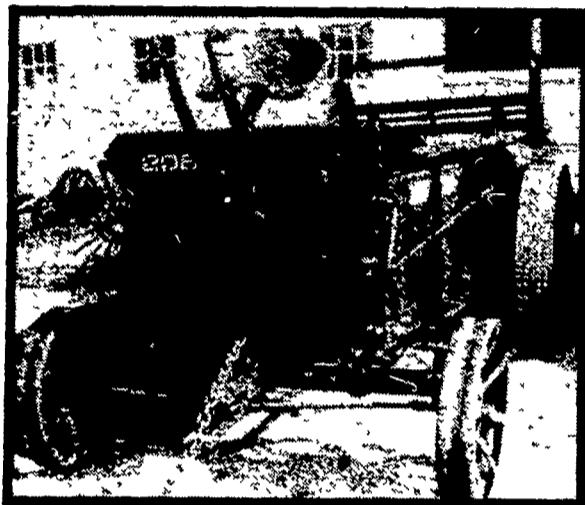
New Holland Sales Stables  
Wednesday, March 8, 1978  
Reported receipts of 134 cows, 43 heifers, and 5 bulls. Market stronger than last week's market.  
Load of Pa. fresh 650-835;

load of Pa. fresh 680-910; load of N.Y. fresh 730-900; load of N.Y. purebreds, springers 875-1400; local cows 510-1050; springing heifers 475-800; open heifers 185-300; bulls 155-460; herd dispersal of 24 head in all stages of lactation 450-930.

## GROUND DRIVE SPREADERS

NOW AVAILABLE FOR IMMEDIATE DELIVERY

★ PLACE YOUR ORDER NOW!



ABOVE PICTURE SHOWS OPTIONAL FRONT STEERING AXLE & WHEELS WITH TONGUE.

Available With Endgate.

SALES & SERVICE

## A.L. HERR & BRO.

Quarryville, Pa. 17566  
Ph. 717-786-3521

After 5 P.M.  
Call Dave Trout,  
717-786-2920

NEW IDEA

## Hitch your silo blower to a star

"POURED REINFORCED CONCRETE SILOS"  
- designed & engineered for strength & beauty available in both top & oxygen controlled bottom unloading.

FEED-EASY - Silo Unloaders, Feeding Systems and Manure Handling Equipment.

FREE ESTIMATES AND PLANNING.

ELIGIBLE FOR ASCS FINANCING.

WEAVER  
**STAR SILO**  
INC.

"Heavy Pak" "Topper" "Energy Pak"

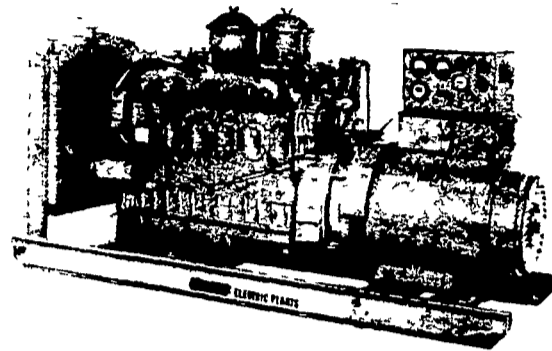
R D 4 MYERSTOWN, PA. 17067  
717-866-5708



**JOE ZOOK** - Area Sales Manager for Lebanon, Berks, Dauphin, Schuylkill, Lehigh, Northampton, Montgomery Co.'s - Northeast PA. & New Jersey.

## ELECTRIC GENERATING SYSTEMS

Built to Your Specifications  
Manual or Automatic  
L.P. Gas - Diesel - Gasoline



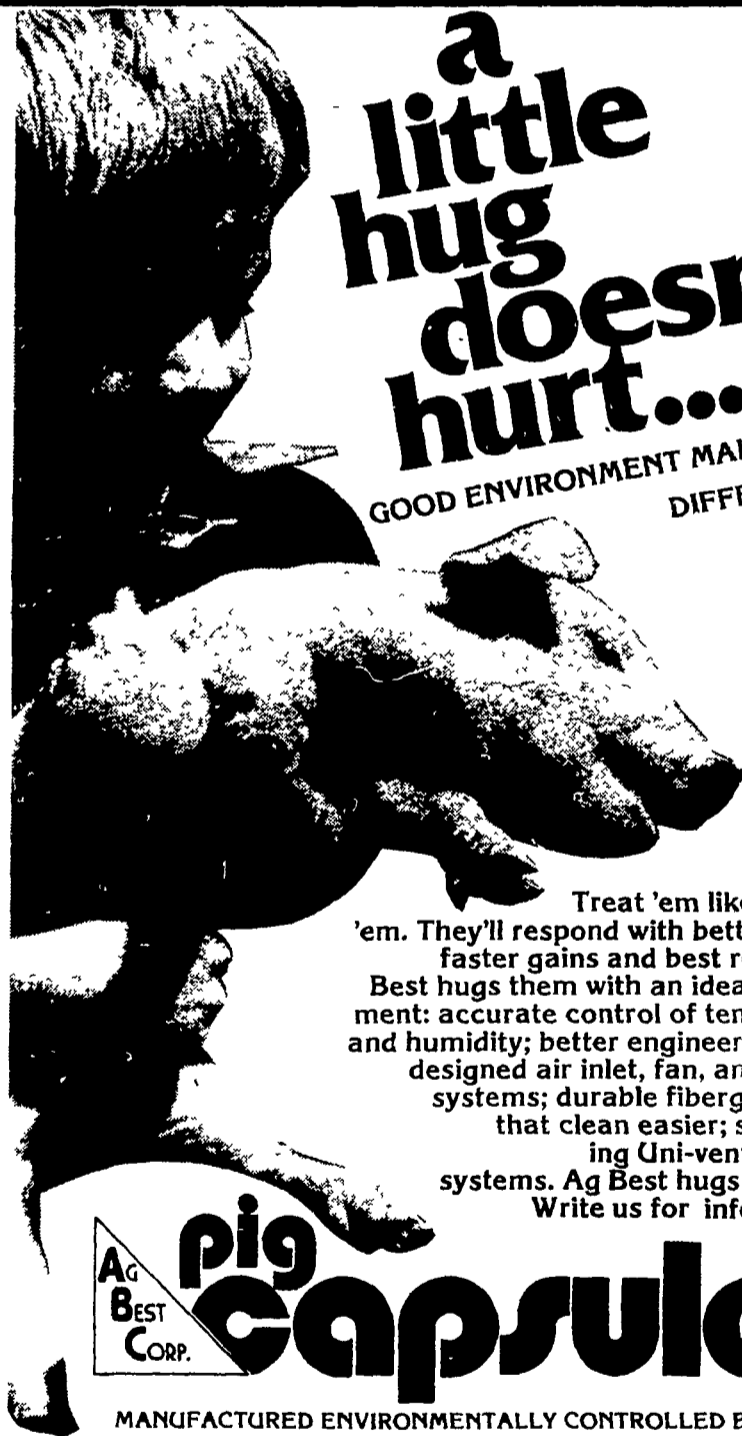
Sales - Service

## MARTIN ELECTRIC PLANTS

Isaac W. Martin, Owner

Pleasant Valley Rd., RD2  
Ephrata, PA (717) 733-7968

a little hug doesn't hurt... BUT A GOOD ENVIRONMENT MAKES THE DIFFERENCE



Treat 'em like you love 'em. They'll respond with better health, faster gains and best results. Ag Best hugs them with an ideal environment: accurate control of temperature and humidity; better engineered, better designed air inlet, fan, and heating systems; durable fiberglass walls that clean easier; self cleaning Uni-vent flooring systems. Ag Best hugs 'em best. Write us for information.

**AG BEST pig capsule**

MANUFACTURED ENVIRONMENTALLY CONTROLLED BUILDINGS

For Farrowing, Nursery and Finishing Operations.  
Manufactured Total Confinement Building For Calves Too!

## KIMMICH FARM EQUIPMENT

P.O. BOX 5190  
NEFFSVILLE, PA 17601

A Complete Line of Swine Equipment Available For Remodeling Your Existing Building.

I WOULD LIKE TO LEARN MORE ABOUT THE AG BEST CAPSULE

Farrowing  Nursery  
 Finishing  Calf

Name: \_\_\_\_\_

Address: \_\_\_\_\_

Tel. No: \_\_\_\_\_