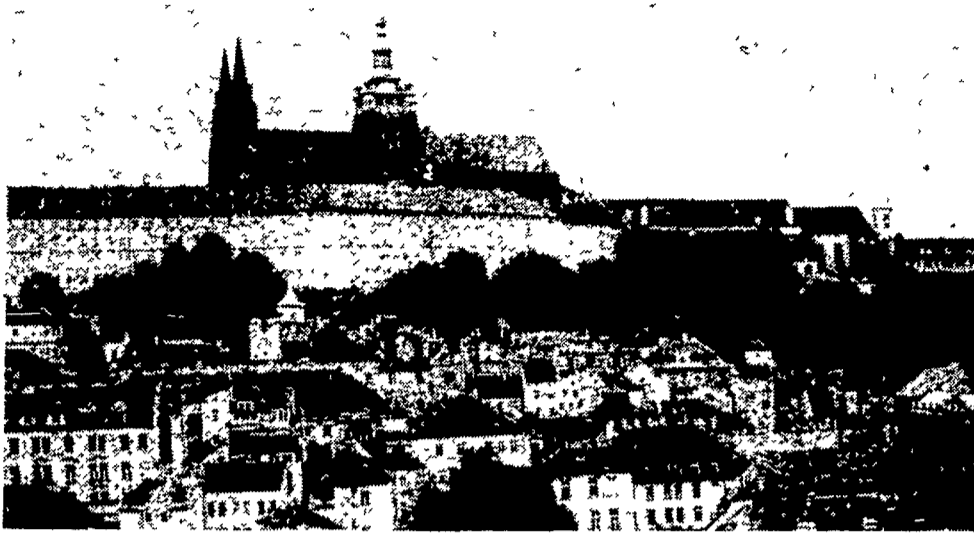
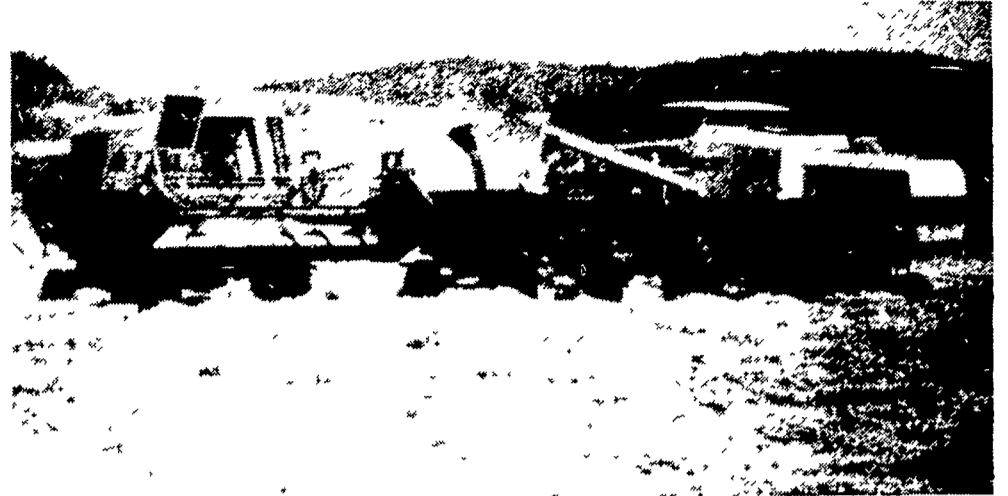


Czechoslovakia offers freer communism



High on a hill overlooking the city of Prague is the beautiful Kralovsky Castle and the St. Vitus Cathedral, built early in the 1300's. King Wencaslas, immortalized in the popular Christmas carol, lies buried within the cathedral walls.



Czech cooperative combines gather at the wagon to unload their burdens of barley. These machines were Swedish made, equipped with German motors.

By JOYCE BUPP
Staff correspondent
SEVEN VALLEYS

Would your life change much if you had to schedule all your shopping trips to shops

that close from noon to 2 p.m. everyday, lock their doors back up at 6 p.m., and never stay open Saturday afternoons? For consumers in Czechoslovakia, it's the accepted way of doing business.

Although this Eastern Europe country is communist dominated, the 140 million citizens seem to live with a bit more freedom than those behind the Soviet borders.

Czechoslovakia's countryside is reminiscent to parts of Pennsylvania, with broad, flat valleys that stretch to rugged and wooded hills in the distance. The beautiful old capital of Prague dates back to medieval times and boasts of the oldest bridge in all of Europe, built across the Vltava River in 1382.

Private ownership of some housing is permitted; but adequate living facilities for the population remain a serious problem. When we visited Prague in July 1976, during the People-to-People delegation tours, we were told of two ways that a family could obtain a "flat," or apartment. It was possible to join a cooperative and spend weekends and vacations helping to build an apartment complex, or the alternative was to simply wait and be willing to pay the price for whatever housing became available, a process which could take as long as 10 years.

Most of the agriculture production is directed through state-run cooperative farms. Our visit took us to a 3000 hectare (7000 acres) operation devoted to livestock and grain production. An overall chairman supervised the activities of the cooperative, with three key advisors assisting him.

About two-thirds of the land was tillable, with most of the remainder in pasture. Grain, predominately barley, grew on over half the arable acres. The peak of the harvest had begun at the time of our visit, and fleets of combines combed the far-reaching fields of yellow grain. This cooperative was required to deliver 200 carloads of grain to the government and was permitted to retain an equal amount for on-farm utilization.

Forage crops included mostly alfalfa and clover, cut not more than three times yearly. Ten per cent of the land was put into flax, with the fiber used as a raw material in the nation's textile industry and the seed harvested for reseeding.

(Turn to Page 128)

Look Into The Advantages Of A Swine "Castle"

To see why our factory-built Sow, Pig, or Hog CASTLES can work so much better for you than other types — take a look inside

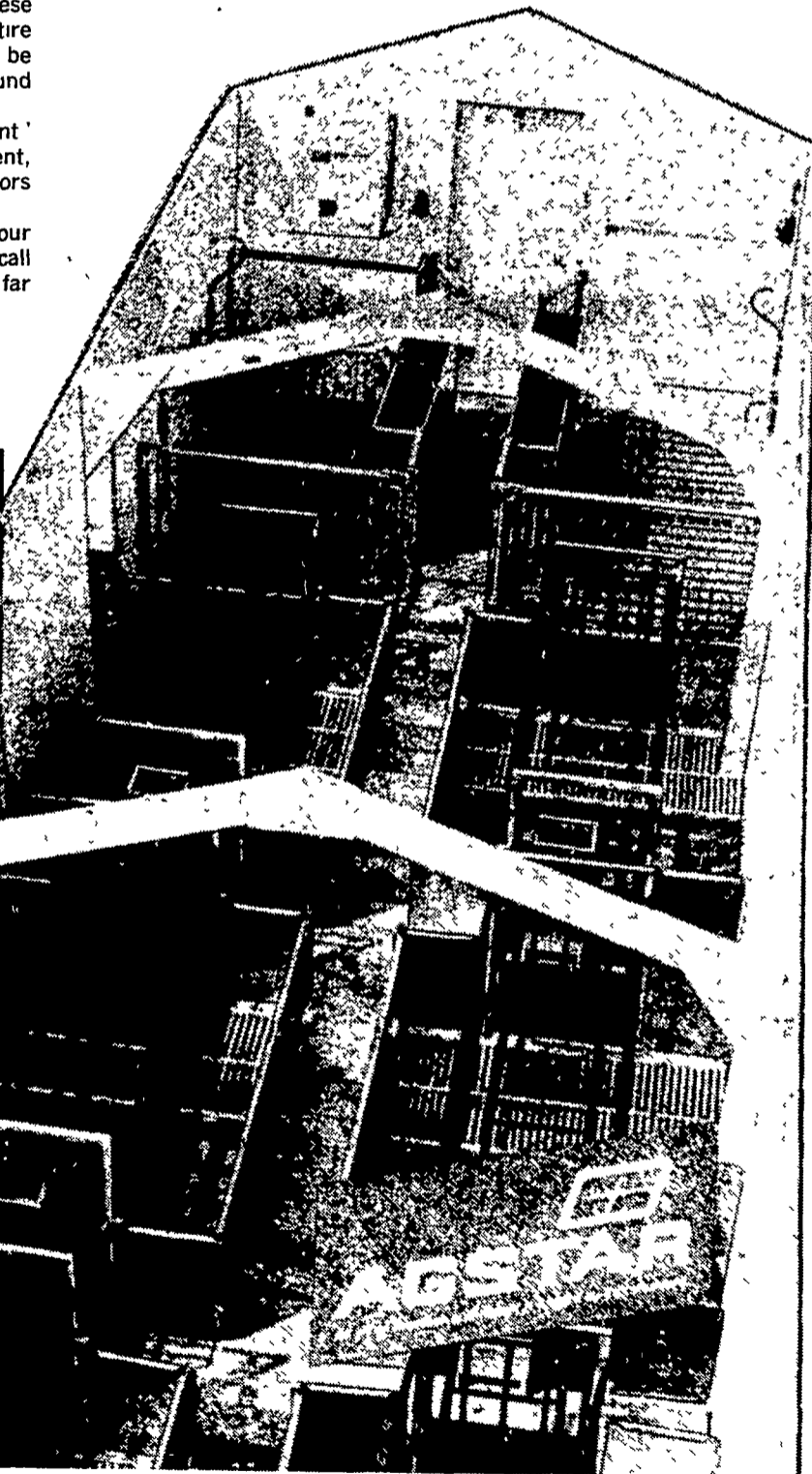
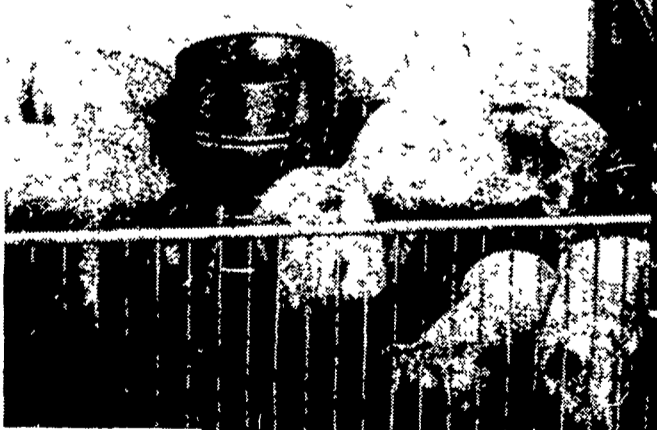
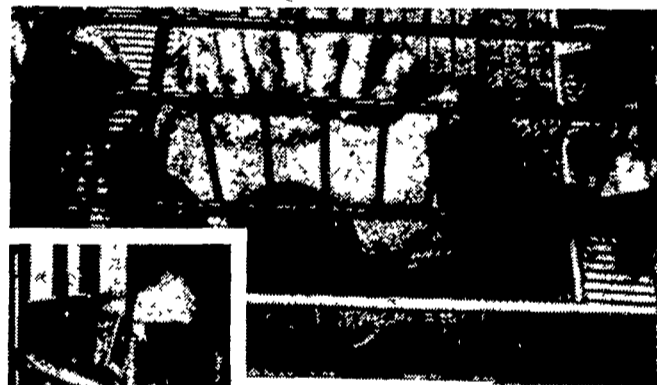
Here are just some of the features that add up to more comfortable sows and more pigs saved in our Sow CASTLE models — fast growth and economical gains in our Pig CASTLE (nursery) and Hog CASTLE (finishing) models. **Great ventilation and heating.** Superior ventilation means all animals get fresh, temperature-controlled air constantly. Fan-forced heating, and adjustable draft-free fresh air inlets at the roof peak keep animals comfortable and thrifty in any weather.

A building that's easier to manage. Features like rigid white fiberglass walls, slotted metal flooring, waterproof electrical fixtures — these make it fast and easy to pressure-spray and sanitize the entire building. So it stands to reason that if sanitation is easier, there'll be less disease, less stress on swine (and you), less feed used per pound of gain, and more profit on every animal.

Best of all — it's factory built. This means it's virtually an "instant" building. When it's delivered to you it's complete with all equipment, plumbing, electrical fixtures. You don't need to mess with contractors or workmen.

Obviously, we can't give you in one ad the whole picture of why our Swine CASTLES are right for you. But if you'll use the coupon, or call us, we'll send you our factual, illustrated literature that does it far better. No obligation, of course.

**WE WILL EXPAND
YOUR HOG BUSINESS
FOR LESS DOLLARS
LET US SHOW YOU HOW!**



E. M. HERR EQUIPMENT INC.

RD 3, SPRECHER ROAD, WILLOW STREET, PA.
LANCASTER COUNTY 717-464-3321

