

High demand for food and feed grains could have favorable impact on markets

ST. LOUIS, Mo. — A high demand base for food and feed grains and soybeans could impact favorably on domestic and export markets in the near term, a grain industry research executive said here this week.

According to Ted Rice, vice president, commodity research, Continental Grain Company, positive indicators include increased domestic use of grain for feed, a record U.S. demand

for soybean and soyoil and a continuing uptrend in exports markets. He said this optimistic outlook was tempered somewhat by expected substantial carryover stocks of corn, soybeans, and wheat.

Addressing the annual convention of the Illinois Grain and Feed Association, Rice projected about 225 million bushels will be added to corn carryover reaching a total of 1100 million bushels, highest since 1972.

"We will add significantly to the soybean carryover, bringing it to the level of 250 million bushels...and we will add about 125 million bushels to the wheat carryover, putting it at the highest level since 1962," he continued.

Rice pointed out that while domestic use of grain for feed has not reached the record level of 1972-73... "we could exceed that in the future."

Supporting this, Rice noted current expansion of the U.S. swine industry along with record broiler production and high milk levels.

Looking ahead, he noted a low point in the cattle numbers cycle developing in 1978. "This means," he said,

"that in the 1980's cows and heifers will be held back for breeding purposes. If we are to maintain a high level of beef production, we must derive a larger than current share from grain-fed beef."

Citing an increased demand base in the export market, Rice said: "While some countries such as the USSR, members of the European Community and India show wide year-to-year variations, the overall trend is up. Further, there are a number of smaller markets which maintain a somewhat orderly year-to-year expansion."

He expressed a positive view of the U.S. return to abundance in food and feed grains and soybeans. "In the process, we are able to reap

the benefits of a market-oriented environment, increasing volume to satisfy an expanding demand base."

"Abundance," he concluded, "provides the soundest basis for a healthy and expanding agricultural economy."

Burpee seed company pays \$625 settlement

NEW YORK, N.Y. — W. Atlee Burpee Co., Warminster, Pa., has paid \$625 to the U.S. Treasury in settlement of a forfeiture claim. The firm was charged by U.S. Department of Agriculture officials with violating the Federal Seed Act, a truth-in-labeling law intended to protect farmers and consumers who buy seed.

Clyde R. Edwards, seed official with USDA's Agricultural Marketing Service (AMS), said the firm consented to the settlement in an agreement signed with officials of AMS. In entering into the agreement, the firm neither admitted nor denied any wrongdoing.

The case involved a lawn seed mixture shipped into South Dakota in 1975. Alleged violations included false labeling of the test date and percentage of seed that would germinate; failure to test for germination within the required five month period before interstate

shipment; and failure to keep complete records.

AMS has issued a brochure entitled "Truth in Seed Labeling," which is available free of charge by writing to: Information Div., AMS, U.S.D.A., 26 Federal Plaza (Rm. 1653), New York, NY 1007.

Carcass show scheduled

NEW HOLLAND — The Lancaster County Swine Producers' annual Spring carcass show will be held on March 13 at the New Holland Sales Stables. Hogs will be received between 3 and 5 p.m.

Each member is limited to three hogs weighing between 200 and 240 pounds. A \$2 entry fee will be charged per head. All those showing hogs are urged to meet at the Blue Ball Bowling Lanes on March 15 at 6:30 p.m. to travel to Hatfield Packing Company, Hatfield, to view the carcasses.

WL311 THE HIGHEST YIELDING ALFALFA IN PA. OTHER MONEYMAKING ALFALFAS

- Vernal
- Buffalo
- Cert. Saranac AR
- Cert. Apollo

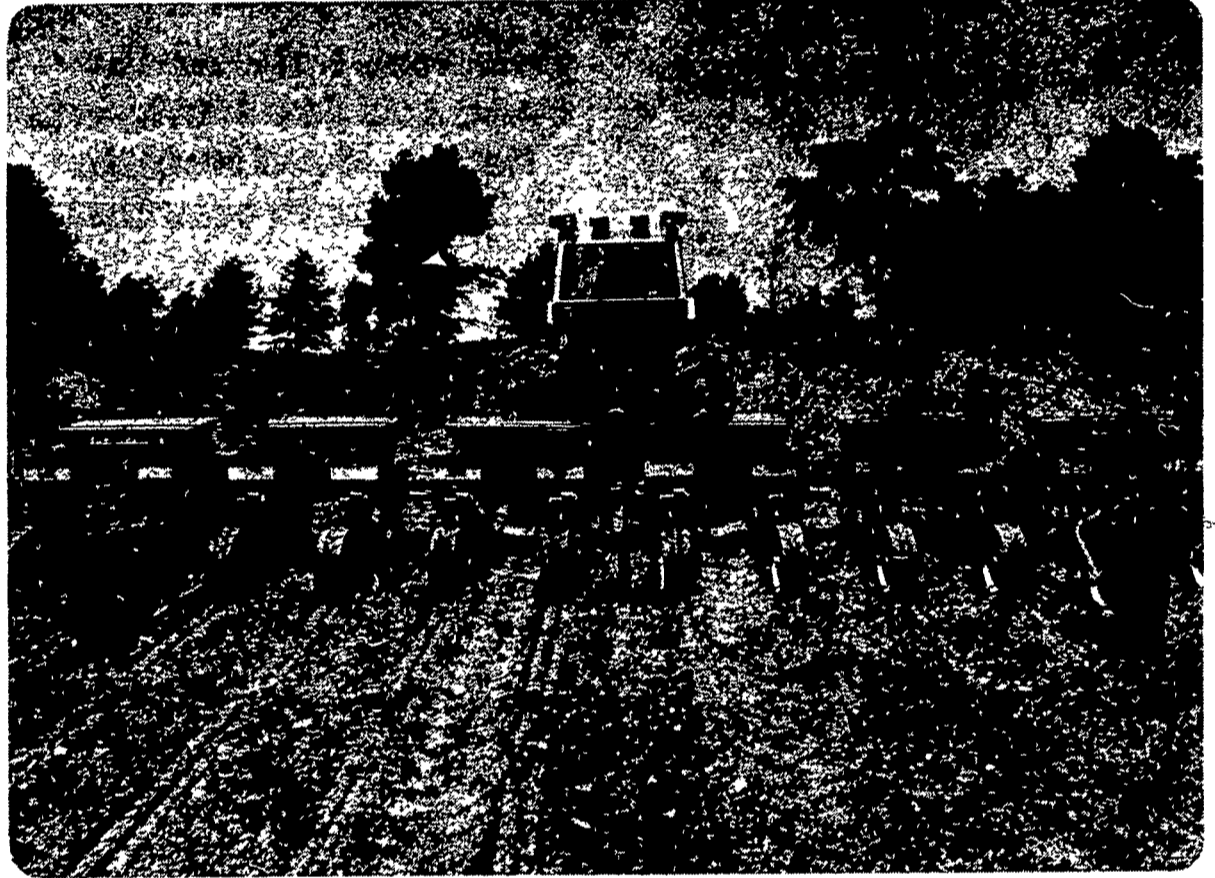
MONEYMAKING CLOVERS

- Certified Pennscott
- Select Pennscott
- Certified Arlington
- Alsike
- Yellow Sweet
- Tall Sweet

Medium Red Missouri Grown
Fresh Seed Mixed And Inoculated (FREE)

REIST SEED COMPANY

Finest Quality Seeds (Since 1925)
Mount Joy, Pa. Ph. 653-4121



"Kick" up corn profits with Unipel® Starter Special 13-34-10.

This is the "corn-popper" special the most imitated pop-up fertilizer on the market. As part of a Unipel corn fertility program, it suits perfectly the young corn plant's immediate craving for nutrients to develop a good root system, the starting point for top yields.

Yet, it's also a complete fertilizer with these key nutrients available in each Unipel pellet:

- * quick-acting, non-volatile nitrate Nitrogen that starts working immediately, even in cool, wet, early-season soils;
- * slow-acting ammoniac Nitrogen that provides continued feeding through the growing season;
- * both quick and slow acting Phosphorus to resist fixation, team with Nitrogen to become more efficient and feed plants for solid growth, help develop strong root systems;
- * vital Potash to furnish young plants with building blocks for strong roots, tough and hardy stalks to resist weather and stress of pests and disease

We can recommend to you the program details for a sound Unipel fertility program — which, on Starter alone, has returned over \$30 an acre above fertilizer investment more than blend "bargain" programs



ORTHO FERTILIZERS

TM'S ORTHO CHEVRON AND CHEVRON DESIGN — REG U.S. PAT OFF

P. L. ROHRER & BRO., INC.

SMOKETOWN, PA

PH: 717-299-2571 CHV 976-5-3

**TRY A TANKFUL.
YOU'LL LIKE THE CHANGE.**



★ **GREEN DIESEL FUEL**
AND
★ **AGWAY GASOLINES**

**WE PRICE IT SO YOU CAN
FILL YOUR TANK WITHOUT
EMPTYING YOUR WALLET**

**NO ONE WHO'S EVER TRIED
THIS FUEL WILL EVER GO
BACK TO HIS OLD FUEL AGAIN.
MAY WE PROVE THIS TO YOU?**

**CALL YOUR AGWAY PETROLEUM
PEOPLE SOON —**

717-397-4954



**AGWAY
PETROLEUM**

LANCASTER, PA.

