

Farmers using support loans

HARRISBURG - The Agricultural Stabilization and Conservation (ASC) Committee says Pennsylvania farmers are using the federal price support loan as a means of holding crops from market and causing farm prices to rise.

Corn is the crop that receives the most attention by farmers in the price support loan program. The corn price has increased from a low of about \$1.65 per bushel in late August to the current \$2.25 per bushel level. The current corn loan rate of \$2.19 a bushel has been attractive to farmers who needed cash to pay farm expenses and who wanted to hold their crop for better market prices.

Loans are available at all county ASCS offices. Loans do cost the farmer six per cent interest for the time he has his crop under loan.

Loans mature nine months after the date the farmer receives his loan. Farmers may repay loans at an earlier date, deliver the commodity to ASCS if the market price does not equal the loan price at maturity, or place the commodity in an "Extended Loan Grain Reserve Program." The final date for obtaining 1977 loans for corn and sorghum is May 31, 1978.

The grain reserve program is an attempt to isolate approximately 300 million bushels of wheat and 700 million bushels of feed grain from the market for up to three years. Keeping this grain in a reserve status should strengthen current market prices, make grain available for emergency needs, and act as a hedge against inflationary prices in case of a poor crop year.

The grain reserve

program works this way. Farmers voluntarily place their crop in the price support program for three years. The farmer receives the six per cent interest price support loan on his crop plus 25 cents per bushel per year storage for wheat and feed grain crops except oats which has a 19 cent per bushel storage rate.

Producers may sell the commodity when market prices improve to equal 125 per cent of the feed grain price support rate and in the case of wheat, 140 per cent of the price support rate. ASCS will require repayment of the loan when market prices of feed grains equal 140 per cent of the current loan rates. Wheat loan repayments are required when market prices equal 175 per cent of the current loan rate. Penalties will be assessed if producers want

to repay loans prior to stated price improvement levels or the loan maturity.

Final dates for entering the reserve for 1977 wheat, barley, and oats is March 31, 1978; 1976 wheat, barley, and oats was February 28, 1978, and 1976 corn is April 30, 1978.

Price support loan activity in Pennsylvania indicates farmers have placed 5,498,063 bushels of corn, 166,674 bushels of wheat, 32,879 bushels of barley, 157,694 bushels of oats, 61,974 bushels of soybeans, and 9,928 hundredweight of sorghum in the annual loan program. 4,642 bushels of wheat and 39,629 bushels of corn have been placed in the grain reserve program through February 17, 1978.

Nationally, producers have placed 513 million bushels of wheat, 927 million bushels of corn, 191 million

YORK -- For the grand finale of regional kick-off week, York County 4-H clubs will publicize their programs with a display at the York Mall on March 10 and 11.

The 1978 4-H Expo will feature demonstrations, small animals, and sign-up booths where Extension staffers and 4-H leaders will

bushels of sorghum, and 210 million bushels of other grains produced in 1977 under price support loan through February 8, 1978.

Price supports are a marketing tool for farmers to use in helping to obtain fair market prices, promote orderly marketing, and provide price floors for commodities. Full details of the price support programs are available at county offices of the Agricultural Stabilization and Conservation Service.

be on hand with information on how to become a 4-H member.

Expo activities will begin at 6 p.m. Friday evening, with a fashion show scheduled for 8 p.m. Participants in 4-H sewing programs are invited to take part in the show, which will be held on the winding staircase leading to the mall's community room.

Demonstrations of skills learned through the 4-H programs will be given hourly. Both interest and commodity clubs, as well as community clubs, will place exhibits on display.

Roxanne Price, Extension 4-H coordinator, is organizing the mall display.

 have a nice weekend...

★ SPECIAL DISCOUNTS THROUGH MARCH ★

RUBBER COW MATS

Guaranteed, top quality rubber cow mats feature wide corrugations with contoured edges that are comfortable for the cow, provide better draining and easy cleaning. They don't have pencil grooves or sharp edges that break off cow hairs.

A full 5/8" thick, they have a waffle design on the under side to prevent moisture creeping back under them by capillary action.

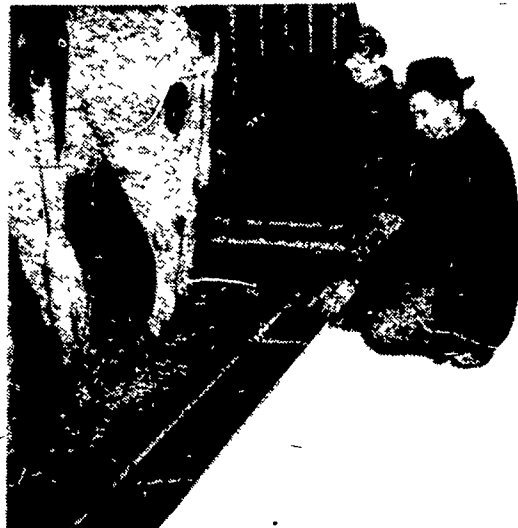
Cow mats pay off because of less bedding, and keep cows off the cold concrete.

These mats carry a 10-year pro-rated guarantee with 100% replacement against defects during the first two years.



COW MAT LISTINGS

PJ 3230 - 40" x 56"	PJ 3239 - 48" x 64"
PJ 3231 - 40" x 60"	PJ 3248 - 48" x 66"
PJ 3232 - 42" x 56"	PJ 3240 - 48" x 68"
PJ 3233 - 42" x 60"	PJ 3241 - 48" x 72"
PJ 3234 - 42" x 64"	PJ 3243 - 54" x 62"
PJ 3242 - 42" x 72"	PJ 3244 - 54" x 64"
PJ 3235 - 45" x 60"	PJ 3245 - 54" x 68"
PJ 3236 - 45" x 64"	PJ 3246 - 54" x 72"
PJ 3237 - 48" x 60"	PJ 3249 - 60" x 72"
PJ 3238 - 48" x 62"	



UNIQUE SHUTTLE-STROKE® CLEANER

This completely-different type of cleaner is ideal for cattle yards, hog lots, and barns with single or odd-number gutters. Used in conjunction with the chain type cleaner, it provides complete versatility of layout arrangement.

The drive unit moves a steel bar in the corner of the gutter back and forth in eight-foot strokes.



CUSTOM BUILT AIRLITE WINDOWS

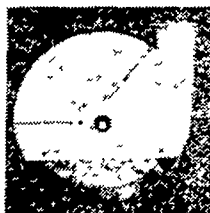
- Choice of 6-lite & 3 lite
- Hot-Dip Galvanized finish

The 6-lite model provides nine square feet of glass area and the 3-lite model provides 4½ square feet.

Weep holes in the lower sash frame drain moisture to the outside of the building.

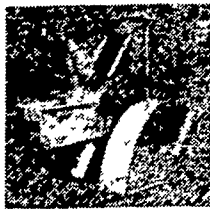
JAMESWAY VOLUMATIC II SILAGE DISTRIBUTOR-UNLOADER

BIG IMPELLER WITH RIGID/SWINGING PADDLES



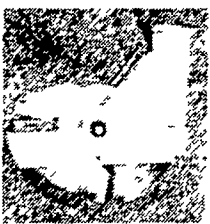
26" IMPELLER

Big 26" diameter impeller pours out silage. It easily unloads a 30 diameter silo. Fast up speed of the paddles provides greater inertia to handle silage in volume for fast feeding. The impeller assembly features a rugged ductile iron hub. Extra heavy 3/16" abrasion resistant steel rim adds years of life to the impeller housing.



RIGID PADDLES

Cupped impeller paddles are angled back in rigid position to increase throwing efficiency for big capacity unloading. Cupped paddles confine silage for faster throw. Top 1/3 of impeller housing lifts off for easy access or to go through silo door. Entire assembly of hub, shaft, paddles, and bearings lifts out for convenient servicing.



OR SWINGING PADDLES

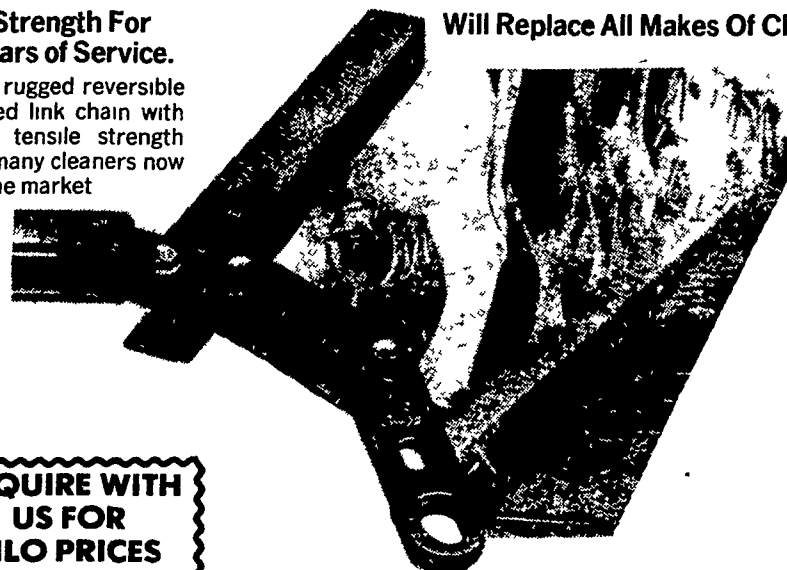
Removing one bolt from each paddle lets them swing. This ability to convert paddles easily from rigid to swinging and back again as necessary lets you adjust to different silage and temperature conditions to maintain efficient big herd feed delivery.

EXTRA DISCOUNTS ON REPLACEMENT CHAINS

Strength For Years of Service.

Will Replace All Makes Of Chains.

This rugged reversible forged link chain with high tensile strength fits many cleaners now on the market.



INQUIRE WITH US FOR SILO PRICES

Stop In Today For Free Catalog.

YOU CAN COUNT ON US

• But don't take our word for it - Ask a neighbor who owns Jamesway.



FREE ESTIMATES
SEE OR CALL US TODAY!

HENRY S. LAPP

Box 175, R.D. 1 (Cains) Gap, PA 17527

Phone (717) 442-8134