

Public Sales Register

SAT MAR 4 - 10 A.M. Public Sale of Tractors Located from Rt 11 at Inwood, WV, turn East on Rt 51, travel 3 miles to Haines' Market, turn right 2 mile to sale Or from Charlestown, WV, take Rt 51 West approx 8 miles to Haines

Market, turn left 2 mile to sale Edgar A. Bohrer, Sale Manager Auctioneers Morrow, Miller and Bohrer

SAT MAR 4 - 9:30 A.M. Public Auction of Farm Machinery, Ear Corn, Oats, Hay, Straw, Milk House Equipment, Truck

and Tools Located on Bloomsbury-Stewartville Rd, first farm on the left, just off Rt 173, old Rt 22, approx 7 miles from Easton, Pa Mr & Mrs John Oates Arthur Hanna, Auctioneer

MON MAR 6 - Public Sale of Farm Equipment Located 2 miles North of Leola on North Brethren Church Rd Sale by Phares W Hurst John E and Paul E Martin, Auctioneers

SAT MAR 4 - 11:30 A.M. Public Sale of Farm Equipment, Butcher Items Located about 4 miles North of Reading, 1/2 mile West of Rt 183 along Prison Rd, next to the Willow Hollow Golf Course, Berks Co, Pa Watch for sale signs on day of sale along Rt 183 Conditions by Lester E Mull Paul E Bixler and Gerald G Kramer, Auctioneers

MON MAR 6 - 11:00 A.M. Mil-Joy Production Sale Located on the farm, 5 miles South of Lenhartsville, just off Rt 143 in Berks Co, PA Ernest O Miller, Owner A Doty Remsburg, Sale Manager and Auctioneer

MON MAR 6 - 11 A.M. Public Sale of Farm Equipment and Household Goods Located 5 miles East of Elizabethtown along Sunny Burn Rd Sale by Raymond Miller Auctioneers Rufus Geib and Raymond Miller

MON MAR 6 - 11 A.M. Public Auction of Farm Machinery Located at the 4-H Club Park, Rt 18 West, 3 miles SW of Centerville, Md Marion Ewing, Owner Harry Rudnick & Son, Auctioneers and Sale Managers

MON MAR 6 - 11 A.M. Dispersal of 90 Head of High Grade Dairy Cattle Located 5 miles

South of Frederick, Md on Rte 85, 1st farm on left South of Buckeystown, md Patsy Clark Grimes, Owner Robert C Mullendore and Emmert R Bowlus, Auctioneers

TUES MAR 7 - Kenneth E Zeiglers' Jayridge Farm Holstein Dispersal near Carlisle, Pa Fred M Naugle, Sale Manager Ralph W. Horst and Art Kling, Auctioneers

TUES MAR 6 - 6 P.M. General Household Goods Sale at Farmersville Auction in Farmersville, 3 mi East of Brownstown, Lancaster Co, Pa John J Rutt, Auct

TUES MAR 7 - Public Sale of Complete Line of Well-kept Ready-to-go Machinery Located in Liberty, Pa, Tioga County Mr & Mrs Lowell Barner, Owners Robert M Shaylor, Sales Manager

TUES MAR 7 - 12 Noon Sale of Farm Equipment Located along Orlan Rd 1/2 mi South of New Holland between Weaver Poultry & Sperry Rand Edgar M Martin, Owner Snyder & Diffenbach, Auctioneers

TUES MAR 7 - 12 Noon Public Sale of Farm Equipment Located 1/2 mile South of New Holland, between Weaver's Poultry Plant and Sperry Rand along Orlan Rd, Earl Twp, Lancaster Co, Pa Edgar M Martin, Owner Paul Snyder and Abe Diffenbach, Auctioneers

TUES MAR 7 - 10 A.M. Public Sale of Excellent Farm Machinery, 6 miles South of Quarryville, left off Rt 222 at Robert Fulton Tea House to Taylor Rd, East app 6 miles, or between Pine Grove and Nottingham on Forge Rd, 1/2 mile South of Chester Water Co, or 4 miles West of Oxford along Forge Rd Sale by Charles D Wilson Lloyd H Kreider and Randal V Kline, Auctioneers

TUES MAR 7 - 11 A.M. Barner Farm Machinery Dispersal Located in Liberty, Pa, Tioga Co 4 miles East on Rt 414, 15 miles West of Canton, turn on Hare Rd to Country Land Rd Owners Mr & Mrs Lowell Barner Robert M Shaylor Sales

PUBLIC SALE OF FARM EQUIPMENT & TRUCKS

Location: Glenwood Ave., Smyrna, Del. next to A&P

SATURDAY, MAR. 11, 1978
11 A.M.

1466 Int. with cab fully equipped, 504 Int. tractor, 510 M.F. combine with 4 row corn head and 15' grain head, 6x16" # 88 M.F. plow, 14' chisel plow, 20 spout J.D. grain drill, 18' M.F. disc with wings, 44 blade Oliver disc, 18' gang packer, 15' Brillion packer, 15' Brillion mulcher, 8' Rhino 3ph blade, N.H. #268 hay baler, 2 Lilliston 4 row cultivators, 3 section drag, 4 section drag, Ferguson 3ph ditcher, 40' King Wyse elevator, Bush Hog rotary mower, 3 flat bed wagons, funnel body wagon, John Blue sprayer, Roto tiller, Wheel Horse riding lawn mower, bolt bins, misc.

1967 Ford truck with 20' grain body, 1964 Ford F700 with 15' grain body, 1963 Chevy #60 series with 15' flat dump and grain sides.

Owner

JAMES O. LEAGER

Terms: Cash Day of Sale
Sales Mgr. & Auctioneer
C.T. Scuse Jr. & Sons
653-7530

Lunch

PUBLIC SALE

FARM EQUIPMENT & BUTCHER TOOLS

SAT., MARCH 11, 1978

Situated in the Borough of Cornwall along Route 72. 1/2 mile south of Route 322.

FARM EQUIPMENT

Massey Ferguson 65 diesel tricycle row crop tractor and loader, Farmall M gas tractor, Farmall Super C tractor, cultivator, and snow blade. Farmall Super A tractor, cultivator, and fast hitch 1-16" plow, IHC M-E 2 row mounted picker, John Deere steel wheel side delivery rake, McCormick 2 row tractor planter, King Wipe 30 ft. bale elevator, New Idea 120 bu. P.T.O. spreader, John Deere 14 ft. flatbed wagon, John Deere #9 3 pt. hitch mower, 3 and 4 section spring tooth harrow, Massey Ferguson 3-16" 3 pt. plow, John Deere 2-16" trip trailer plow, Massey Harris 32 disk harrow, M-F tractor cultivator, 10 ft. Brillion soil pulverizer, 10 ft. wood drag, drag sled, potato plow, scorer, hiller, John Deere #51 3 pt. posthole digger, 2-1 hole corn shellers, tractor mounted cord wood saw, Letz hopper grinder, Arps 3 pt. 6 ft. rear scraper, 2500 watt engine driven generator, 225 amp Lincoln welder, 2 wheel trailer, 8 hole hog feeder, 6, and 12 ft. water trough, iron hog troughs, 5 milk cans, 6" steel columns, 2 H.P. air compressor, 100 ft. air hose, heavy-duty electric cord, Kitson egg washer, sawed locust posts, odd lots of framing lumber, 12 ft. steel round brooder house, pony cart and harness.

36 ft. shifting ladder, tractor tire chains, tow chains, 15 gal. high pressure power sprayer, Homelite chain saw, Sears 24" chain saw, 50 ft. 6" endless belt, electric hedge trimmer battery charger, bench grinder, electric grindstone, anvil, chain hoist and carriage, electric fencers, electric drills, steel workbench, bench vise, pipe cutting tools, 100 ft. 1 1/4" plastic pipe, steel pipe, splitting wedges, lot of carpenter and mechanic hand tools, 50 gal. #30 oil, greases, tool cabinets, pruners, axe, sledges, scythe, bernis bags, ceiling tile, assorted bolts, rakes, forks, shovels and numerous other items.

1 1/2 ton Timothy hay
International oil fired hot air furnace.

BUTCHERING TOOLS

Belt driven meat grinder, #422 meat grinder, 3'x8' cutting table, cutting bench, lard press, sausage stuffer, electric slicer, 5 iron kettles, stirres, 3 beam scales, scalding trough, mixing trough, scalding chains, kettle hooks, bone saws, ladle, fork, and other items.

Sale of Commence at 9:30 A.M.

Order of Sale: Hand Tools, Butcher Tools, Farm Equipment.

Conditions By
WEBSTER B. SHOWERS

Owner

Auct. Earl S. Buffenmeyer
Clerks, Zug and Brandt

Ralph Horst, Marion, Pa., Auct.
Gossert and Eberly, Clerks

PUBLIC SALE OF FARM EQUIPMENT AND HOUSEHOLD GOODS, ETC.

The undersigned leaving the Etter farm will sell on the farm located 2 1/2 miles South of Shippensburg, Pa. along Rte. 696, leave Rte. 81 at Fayette St. Exit 9, 1/2 mi. North on 696 to sale on

FRIDAY, MAR. 10, 1978

Sale at 9:30 A.M.

TRACTORS— FARM EQUIPT.— ETC.

M.F. 1080 diesel tractor, like new; M.F. 165 diesel with Kelly 600 loader, snow bucket; A.C. W D 45, 3 pt. hitch; N.I. 305 picker mounted on "45"; A.C. 780 harv. with corn and grass head, like new; N.H. 269 baler with thrower; Hesston PT 10 Haybine; N.H. 40 ft. elev. with motor; Walsh 300 gal. sprayer; 2 Grove self-unload wagons, 3 beater, with roofs; 3 wagons with bale racks; 2 Kil-Bros. 300 bin wagons; 1 - 20 ft. and 1 - 14 ft. green chop wagons; 20 ft. mow conveyor with motor; Little Giant roll-way elev.; Ford 3 pt. rake; J.D. 13 x 7 drill; Hawkbilt 207 spreader, automatic lid, used 3 mo.; 2 flat bed wagons; 1 wagon for cattle feeder; Miller 9 ft. transport heavy disc; 8 ft. packer; 3 section harrow; 3 pt. cults.; 2 wheel trailer; 6 ft. scraper blade; Lilly 3 pt. fert. spreader, 500 lb. capacity; 1949 Ford 3/4 ton stock truck, not running; tractor chains, 6 water tanks for cattle, 30 ton oak corn crib, 20x40 cattle shed, silage on pile, posts, plyboard, Post lumber - 2x6x10, 2x4x10, 250 gal. gas tank with pump, iron posts, Ward 1 - H.P. air compressor like new; Sears 14 inch chain saw, 3 rabbit coops, 2 wagon loads small items, old iron, corn sheller, 12x28 chains.

DAIRY EQUIPT.— LAWN & GARDEN TRACTORS

Bolens 7 H.P. lawn tractor and mower; M.F. 7 H.P. tractor and mower; Cub Cadet 100 and mower, overhauled; Agway roto-tiller; garden tractor; Esco 225 ice bank bulk tank, Surge S P 22 pump and stall cocks for 27 cows, 52 gal. heater, 4 Surge pails, 3 stainless buckets, 2 strainers, stainless twin tubs, wash basin, Acorn stable cleaner with new motor, cable and train; 32 good all complete stanchions, 15 drinking cups and pipe, some like new; feed cart and box, cattle duster with bag, cow clippers, milk cans, etc.

At same time and place Philip and Judy Ocker will sell following-

TRACTORS & EQUIPMENT

Case 630 with Eagle hitch in good cond.; Ford 3000 diesel; Ford 600, both good; J.D. 2 - 14 in. 3 pt. plow; Case 3 x 14 in. Eagle hitch plow; Kelly loader; N.H. 36 flail chopper, used 1 year; J.D. 185 bu. tank spreader, used 1 1/2 years; J.D. 14T baler with double cylinder thrower; Lamco 16 ft. flail chop wagon; new 16 ft. hay wagon; N.H. 32 ft. elev.; J.D. KBA disc; 6 ft. 3 pt. scraper blade; N.I. ground drive spreader; oval hay rack with bottom; metal feed and water troughs; locust posts, tapered; 1x6x16 boards, other lumber, shovels, forks, brooms, bolts, chains, elec. fencers and other items.

HOUSEHOLD GOODS AT 9:30 O'CLOCK

New Suburban wood and coal stove, 1 wood or coal heatrola, 2 tables, deep freeze, refrigerator, record player, writing desk, old oak rocker, chairs, roll way bed, add machine, crates, tubs, jars, crocks, pictures and many other items.

Terms: Cash; Lunch stand reserved.

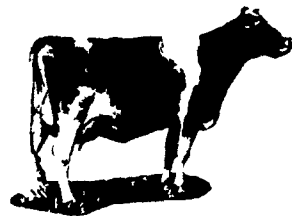
Owners

PAUL E. and E. JANE OCKER

R.D. 3

Shippensburg, Pa

Phone (717) 532-5287



GUERNSEY HERD DISPERSAL

Located at the Guernsey Sales Pavilion, Lancaster, Pa.

THURSDAY, MARCH 9, 1978

1:00 P.M.

20 head of outstanding close and fresh cows, 20 yrs. of selective AI breeding cows that have size, production, test and type. Individual production records on each cow. 30 day TB and bangs tested to go anywhere.

This is a fine group of cows, don't miss this sale.

Owner:

MARVIN E. MILLER

Sale Managed by:

PA Guernsey Breeders Association

PUBLIC SALE

GOOD FARM MACHINERY
TUESDAY, MAR. 14, 1978

at 11:00 A.M.

Located 3 miles South of Quarryville along Rt. 472.

JOHN DEERE 530 TRACTOR W/3 PT. HITCH
FARMALL 400 TRACTOR W/QUICK HITCH
FARMALL SUPER C TRACTOR
W/2 ROW CULTI.
B ALLIS CHALMERS
W/HY LIFT, CULTI., MOWER

15 ft. rotary hoe 3 pt. hook up; JD manure loader; Cobey 250 bu. manure spreader w/hy end gate; 3 bottom Int. 14" plow; JD 810-A 3-14 bottom plow; JD 480 mower conditioner; JD #2 hay fluffer; JD 32 KBA disk harrow; Brillion 10 ft. cultipacker; NH 717 chopper w/corn & grass head; NH silage wagon; 36 NH flail chopper; (pull type) NI 2 row corn picker w/sheller 36" to 40" rows; NH 30 ft. elevator w/motor; corn drag w/motor; JD 4 row corn planter w/plates; 4 metal grain bins 165 to 200 bu., 7 ton running gears; 277 NH baler w..thrower; power shaft for NH baler, full extra assembly; 4 flat bed wagons w/6 & 8 ply tires, some with side boards; NNH silo filler w/65 ft. pipe; JD 2 row cultivators; Hershey 2-row transplanter; 4 double sets tobacco ladders; approx. 20,000 lath; weed sprayer w/cattle sprayer attachment, 75 ft. hose; Frey stock dehorner gate; double & single harpoon hay forks; Brillion 8 ft. seeder; cement mixer 3 pt. hitch; 7 hog feeders, 2 2 1/2 ton 20 hole hog feeders, 2 10 hole hog feeders, 1 new; hog water tanks; heating lamps; assorted chicken feeders; kerosene brooders; 2500 gal. steel tanks; 7 ft. locust posts; heavy gate posts; saddle; pony cart & harness; 2 wheel trailer w/bed; milk cans, bailen boxes, platform scales, 4 barn fans.

Not responsible for accidents day of sale.

Terms by

BUS SHOEMAKER

Aucts. Lloyd H. Kreider
& Randal V. Kline

Refreshments