

## Chester County DHIA

(Continued from Page 144)

Harold Umble						
Lil	3	6-4	305	23,122	4.1	951
John M. Umble						
Dream	3	5-4	305	21,582	4.2	902
Doris	3	10-5	305	25,103	3.4	862
Wanda	3	7-9	305	19,888	3.9	776
Carmen	3	3-5	305	18,700	4.1	761

## FLO-INDA FARMS DISPERSAL

OF REGISTERED HOLSTEINS  
ALSO SALE OF  
FARM IMPLEMENTS

**SATURDAY, MAR. 18, 1978**

At 10:00 A.M.

Located approx. 7 miles south of Reading, 1 mile east of the Village of Alleghenyville just off Rt. 568 in Berks County, Pa.

**85 HEAD OF REGISTERED HOLSTEINS**  
of which 50 are milking age, in all stages of production including 18 1st and 2nd calf heifers also 8 bred heifers for summer and early fall, 12 open heifers, 12 or more under 1 year.

Certified and accredited D.H.I.A. average: 46 head, 15,955 milk, 617 fat, 3.9%. 100% Home-Bred -Atlantic Sires used for years.

Included are the following top record individuals:

Patty Star	6 yr.	3 m	348d	23,553m	960f	4.1%	due Feb.
Tilly Rocket	1 yr.	11 m	18,370m	707f			due Feb. a yrlg. sells by "Gay"
Lily Star	5 yr.	365d	22,883m	896f	3.9%		fresh, has yrlg. dtr.
Date Bonus	5 yr.	305d	20,314m	836f			fresh, 2 dtrs. Skylark Comet & a La-Rare Million Heir
Ella Prince	4 yr.	295d	18,163m	670f	3.7%		due Feb. a yrlg. by Standout
Radish Tim	3 yr.	305d	19,103m	681f			Maternal sister by Gay Dam: 301d 25,286m 968f

Stylenmaster	4 yr.	305d	20,923m	726f			Proj.
Ivanhoe Star	2 yr.	305d	16,161m	609f			

Several other Heifers and Young Cows with over 16,000 milk.

### 4 TRACTORS

John Deere 2020 Diesel High Clearance Wide Front End, also 36A Industrial Loader with Scoop Bucket; 4000 Ford Diesel Tractor Selecto Speed and rear wheel weights; 1650 Oliver Diesel tractor with Hydra power; W.D. Allis Chalmers Tractor, also #420 - 2 bottom 14 inch 3 pt. trip plow; John Deere 336 baler with hydraulic bale thrower, used very little; John Deere 14T Baler with #24 thrower; Hesston 1400 gallon self loading liquid manure spreader; 9 ft. #550 Case haybine; New Idea 8 ton Tandem axle manure spreader; 6 ft. N.H. Flail chopper, used very little; farm hand side rake; John Deere wagon with hay sides; New Idea wagon with haysides; Stauffer chuck wagon with 10 ton chassis; John Deere #34 1 Row Harvester; White #252 - 12 ft. Transport Disc; Ferguson rear end cultivator; John Deere 17 disc grain drill; Brillion 12 ft. cultimulcher.

John Deere 4 row cornplanter; 3 pt. King Cutter brush cutter, used very little; 24 ft. bale elevator; 14 ft. green chop wagon with feeding rack; 10 ft. cattle trailer; 3 pt. Century field sprayer with fiberglass tank; Jamesway 16 ft. silo unloader, used 2 years; 1 large pile of corn silage; approx. 50 bu. rye; several hydraulic cylinders.

### INTERNATIONAL 170 AUTOMATIC RESET PLOW

4-16 inch Bottoms  
1965 FORD 350 HORSE & CATTLE TRUCK  
Low Mileage

Walsh High Power Washer; Herd Breeding Record cowculator; pressure sprayer; 200 lbs. capacity air compressor on wheels; Lincoln welder 225 amp, 1/4 inch elec. drill; David Bradley garden tractor; 2 International Super 98 electric fencers; bag wagon; electric cords; Handy Man Jack; lawn roller; garden hose; 10 ft. steel cattle gate; metal bolt cabinet; grease pump; 55 gal. drum and pump; 2 cases Cen-Re-Co tube grease; freezer; sofa; record player; dishwasher.

**AUCTIONEER'S NOTE:** (This is a very good working dairy herd with splendid udders. They must be seen to be appreciated, also several of these implements are only 1 or 2 years old. Do come early as there are not many small items. Sale to begin with small items. Sale of implements and tractors at 10:30. Sale of dairy cattle 12 noon). Catalogs upon requests.

Owners

**FLOYD & SALINDA WEBBER**

Mohnton R.D. 1  
Herdsman, Leon Weaver  
215-856-7656

Sale of dairy cattle to be held in tent.  
Auctioneers -- LeRoy S. Horst and Paul W. Horst  
Pedigrees -- Carl Diller  
Clerks -- Kilmer and Gehman  
Refreshments Will Be Served  
Not Responsible for Accidents If Any Should Occur

## TICE COMPLETE DISPERSAL



Located on Old State Rd. off Rt. 6, three miles from Mainesburg, 7 miles from Mansfield, 10 miles from Troy, Pa. Watch for auction arrows in Mainesburg.

**THURSDAY, MARCH 9, 1978**

At 1:00 Sharp  
57 HEAD HOLSTEINS 57

Herd consists of 45 mature cows, 12 hrs., ranging from 1 mo. to 1 yr.; 10 cows fresh or close by sale time, balance in all stages of lactation. Interstate tested, preg. ex., charts day of sale.

### MACHINERY

JD 2519 (gas) w/power shift & wide front; Ford 5000 gas tractor; H Farmall (good rubber); JD #346 baler w/kicker & hay saver attachment (real nice); Brady #250 portable grinder mixer; IHC #16 chopper w/pick up & 1 row corn head; Case 211 chopper w/pickup head (old); Gehl chopper box w/AC 1001 running gear; Hesston PT10 haybine 1 yr. old; 2 hay wagons w/kicker racks; 1 running gears; New Idea PTO spreader w/hyd. tailgate; Smoker elev.; Sam Malkey elev.; skelton elev.; Ford 3 bottom 3 pt. hitch plow; Ford disk; JD Van Brunt 15 disk grain drill; Cockshutt 2 row corn planter; New Idea side rake; JD crimper; snow plow for front of truck; two 3 pt. blades; post hole digger.

### PRODUCE

Approx. 20 large round bales hay.

Terms: Cash or Good Check.

Lunch Available

Sale Under Cover

Owner: **FRANK & ONALEE TICE**



## TAYLOR COMPLETE MACHINERY DISPERSAL

Located off Rt. 15 at the top of Steam Valley Mountain. Take Rt. 184 west toward Cogan House follow auction arrows, 4 miles off Rt. 15, ten miles from Liberty, Pa., 24 miles from Williamsport, 30 miles from Mansfield. Having sold my farm and cattle I will sell all machinery at public auction on

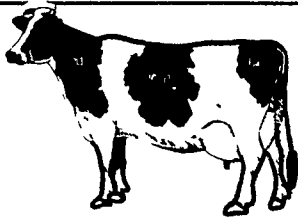
**TUESDAY, APRIL 4, 1978**

At 10:30 Sharp

5 Tractors including Farmall 806 & 706; 2 IHC hydro 544 diesels; Farmall H; IHC 3200 A; skid-steer loader; JD self-propelled windrower; JD 336 baler; IHC 4 row cyclo corn planter; 2 Gehl 3 beater 16 ft. forage boxes w/flotation tires and 10 ton running gear; full line of farm equip., and enormous amount of good small items. Small items will be sold at 10:30, farm machinery at 1:00 sharp regardless of small items. Watch for full listing on this good sale.

Owner: **ALLEN & LADENE TAYLOR**

## WILDMEAD MILKING HERD DISPERSAL



Located on Rt. 414, five miles from Liberty, 11 miles from Canton, 35 miles from Williamsport, Pa. Watch for auction arrows.

**FRIDAY, APRIL 21, 1978**

1:00 P.M.

**55 - REGISTERED HOLSTEINS - 55**

Selling 19 dau. of R.O.R.A. Elevation!!!

7 Elevations are S/W/C to Wayne Spring Fond Apollo!!

Other sires represented: Gent-7; Charmcross-5; Pencor-4; Ivanhoe Star-3; Transmitter-3; Rebel-3; First Million-3; Typeblazer-2; Sunnyside Standout!

Service Sires: Elevation-1; Wayne Springs-7; Jerry-10; Job-3 and others.

A young herd with good udders and a 4.0% test. Tested and classified for years. 15 due in fall - 8 fresh or due, others balance of lactation. Herd vaccinated and accredited.

1977 DHI Herd Ave. 15,863M, 629F, 4.0%

1977 BAA 101.5 scheduled to be reclassified March 22nd with 13 first calf hrs.!!

Watch for full listing on this outstanding sale!

Owners: **GORDON & ROY SCHANBACHER**

Auctioneer: Arlow Kiehl

### WOOD'S AUCTION SERVICE

Sales Manager: Gordon Wood  
Mansfield, Pa. 717-549-4901

For the most in advertising coverage and preparing your sale, call Wood's Auction Service.

Bryncoed Farms, inc.						
M 56	3	7-4	305	19,990	4.5	896
Willowland Farm						
Bobbie	3	5-0	305	20,706	4.3	894
J. Harold Bare						
#31	3	5-0	305	22,118	4.0	879
#15	3	6-10	305	22,233	3.6	800
#14	3	3-5	305	21,295	3.7	792
Ardrossan Farms						
Ex Luce	1	9-3	305	20,614	4.2	873
C Minerva	1	3-8	305	16,788	4.2	713
SS Rose	1	2-7	305	16,689	4.2	703
Paul King						
Wallie	3	6-2	305	19,020	4.6	867
Segis	3	6-3	305	20,399	3.9	804
Gottlieb Strohmaier						
Bonnie	3	5-5	305	23,693	3.6	861
Joel C. Brown						
#251	3	4-7	305	20,953	4.0	844
H. & R. Mason						
#50 J	3	5-3	299	20,112	4.2	836
Mast Stoltzfus						
Pat	3	4-5	298	19,715	4.2	832
J. Elmer Lapp						
Rachel	3	6-8	305	19,971	4.1	819
Horace Prange						
Pretty	3	7-6	305	19,798	4.1	817
Allen S. Hoover						
#6	3	4-3	265	21,242	3.8	805
#143	3	2-2	305	18,053	3.9	712
Newton Evans, Jr.						
#159	3	5-3	305	20,670	3.9	804
James V. Yale						
#23	3	7-4	305	18,332	4.4	803
#40	3	11-0	305	19,477	4.0	770
Kulp Bros.						
#37	3	8-10	298	19,507	4.1	794

(Turn to Page 146)

## FARM MACHINERY CONSIGNMENT SALE

**SATURDAY, APRIL 8, 1978**

INTERESTED CALL 717-992-4611

Located 20 miles North of Easton, 10 miles West of Stroudsburg, Pa.

Dick and Dan Seidof, Auctioneers  
Sciota, Pa.

## PUBLIC SALE

OF FARM MACHINERY

**MONDAY, MAR. 13, 1978**

10:00 A.M. SHARP

Personal Property in the Estate of Dale J. Myers, located in Cumberland County, Pa., 4 mi. west of Carlisle along Route 465 (Walnut Bottom Road). From 181 Plainfield Exit No. 12 go south two miles to sale.

### FARM MACHINERY

Oliver 770 gas tractor, chains to fit; 2 JD B tractors, both with starters and cults.; NH 268 Baler with thrower; NH roll-bar rake; NH crimper; 2 wagons with high racks; JD No. 5 mower; 2 Smoker elevators; roll-away; Harvest Handler aluminum elevator; Welsh tank field sprayer; JD 4 row corn planter.

JD 17 disc drill; NH P.T.O. manure spreader; NH 5 ft. flail chopper; bin wagon with aguer; Huskee gravity bin wagon; flat wagon; No. 4340 Oliver 3 - 16 in. bottom trail plow; 2 Oliver disc harrows, one heavy duty; JD disc harrow; Brillion 10 ft. packer; JD 3 section lever harrow; 2 and 3 disc trail plows, hyd. lifts.

Front mount wood saw; Badger silage distributor; air compressor; hyd. cylinders; cast iron and metal water troughs; hog troughs and round feeder; scalding trough; one hole corn sheller; platform scales; 2 ensilage carts; 2 wheel barrows; 36 ft. double ladders; 24 new cow trams; Hom-e-lite chain saw, about new; Surge SP 11 pump and units; milk cans; 2 wagon loads of usual farm articles. Single and double trees.

1969 FORD 3/4 TON FLAT BED TRUCK, 51,000 MILES

1965 PONTIAC 4 DR. HARD TOP, AUTO. RIDE AMATIC & ARICNA-FAIRWAY ROTARY MOWERS

1 and 1/4 mows mixed hay & 1/2 mow of straw to be sold in bulk lots. Approx. 300 bu. barley by the lot; round brooder house.

SALE ORDER -- 10:00 Small articles; 12:00 Hay, Straw, Truck, then Tractors & Equipment.

**AMY MOUNTZ &**

**LUTHER MOUNT, JR.** Executors

Phone 243-6293

Arthur Rife, Auct. (PH. 717-776-3645)

Wickard, Clerk

George B. Stuart, Attorney

TERMS-Cash LUNCH STAND  
Not Responsible for Accidents