

# Chester County DHIA

(Continued from Page 140)

David Windle B3	43.0	78.2	41.7	4.2	1.75
Elmer A. Mast B8	60.2	88.6	41.2	4.2	1.74
E. Richard Hoopes B3	51.3	92.3	45.4	3.8	1.74
Vernon C. Ruth 3	48.1	84.7	43.4	4.0	1.74

David Walton B3	52.6	92.4	41.4	4.2	1.73
James V. Yale B3	64.0	85.7	39.8	4.3	1.72
Mrs. John B. Hannum, 3rd G3	97.4	90.4	44.6	3.8	1.71
Hargret Dairy, Inc. B3	51.9	89.9	43.5	3.9	1.71
Charles J. Moore B8	48.1	86.1	42.4	4.0	1.70
J. Kenneth Landis B3	53.9	83.3	42.3	4.0	1.70
Herman Stoltzfus B8	51.8	84.8	43.7	3.9	1.70

# Lancaster Farming, Saturday, March 4, 1978-141

Floyd Miller G3	50.9	91.1	41.7	4.1	1.69
Horace Prange B3	47.3	90.8	41.4	4.1	1.68
Samuel B. Acker B3	201.3	83.3	39.1	4.2	1.64
Simon Z. Zook G3	54.5	88.0	41.9	3.9	1.64
H. & R. Mason 3	104.0	90.0	41.7	3.9	1.63
George Steele & Sons B3	82.7	92.3	40.5	4.0	1.63
Donald H. Windle B3	135.8	94.5	42.5	3.8	1.62
Joel C. Brown B3	117.1	90.8	43.8	3.7	1.62
Calvin Blank B3	50.6	88.5	41.2	3.9	1.62
Lenape Dairy Farm B8	330.7	88.9	44.8	3.6	1.60
Arthur D. Hershey 3	52.6	90.2	42.4	3.8	1.59
Gottlieb Strohmaier B8	92.5	86.4	38.2	4.2	1.59
H. R. & H. L. Brown B3	134.4	92.7	40.0	4.0	1.58
John W. Yeager B3	24.6	78.6	37.6	4.2	1.57
Paul B. Lapp 3	19.3	89.6	43.4	3.6	1.57

(Turn to Page 144)

## PUBLIC SALE

OF REGISTERED HOLSTEIN HEIFERS  
FARM EQUIPMENT

FRIDAY, MARCH 10, 1978

At 11 o'clock

Located midway between Mt. Joy and Marietta, just off Rte. 141 along Long Lane.

21 Holstein Heifers

19 registered - 2 grade, out of popular sires 1 Elevation, 2 Harrisburg Gay, 2 Life-o-Riley Marquis Kings, 4 Rosemere Fury, 1 Apollo Rocket.

Some of the dams are: Kingpin, Apollo, UNH President King, Astronaut, Arlinda Chief.

Some dams with records over 20,000 milk and 14 of the dams with records over 15,000.

Oct. of 1977 rolling herd average over 14,500 over 500 lbs. fat.

5 heifers bred - 16 open from ages 6 months to 2 yrs.

Kesco Milk Mover

Gleaner G Combine with cab  
13' grain head with Hume reel  
4 row 35" corn head

Case Agri King 770 - 1800 hrs.

Case-o-matic 400

1965 Ford F 100 pickup custom cab (good condition); 1956 GMC truck (w) 1' bed (w) hydraulic dump; White #348, 3-16" bottom plow auto. reset (like new); NI #279, 9' cut-ditioner (like new); NH #270 baler (w) thrower; NH #516 205 bu. spreader; NH #56 rake; wagons, one (w) high sides; 3 pt. cultivator; Ganny applicator; large assortment of hardware; 10,000 tobacco lathe; milk cans; fence charger; forks; shovels; tools; etc.

14 Ton Ear Corn

12 Ton Hay (some alfalfa, some mixed hay)

2 1/2 Ton Straw

200 Ton Silage (more or less)

Lunch Available!

Sale by:

**THOMAS WIVELL**

Aucts. Raymond Miller - 665-4188

Rufus Geib

## PUBLIC SALE

OF VALUABLE REAL ESTATE

SATURDAY, MAR. 11, 1978

Along Gristmill Road Martindale Lancaster County Penna.

All that certain tract of land with 44.55 feet frontage and extending in depth 250 feet more or less, with 2 1/2 story frame dwelling thereon erected containing 6 rooms and 1st floor bath, and laundry; new oil fired hot air heat, elec. and water. House in good cond. some of the rooms are paneled and insulated. Also horse barn and second wood work shop. Ideal location.

For inspection of property call 267-3376 for appointment, Sale at 1 P.M.

Terms By

**MARVIN W. &  
IDA ANN MARTIN**

H.H. Leid Auction Service

## AGWAY INC.

INVENTORY REDUCTION

PUBLIC AUCTION

MODERN FARM EQUIPMENT

THURSDAY, MARCH 16, 1978

At 10:00 A.M.

Located 4 miles west of Allentown, just off Rt. 22 in the village of Chapman, Lehigh Co., Pa.

TRACTORS: JD 4630 cab, air, P/S; 1973 JD 4630 cab, air, duals, Syncro; 1967 JD 5020D duals, turbo, repaired; JD 4430, roll guard, quad.; JD 4430 cab, Syncro; JD 4320; JD 4230, quad.; JD 4030 Syncro; 1965 JD 4020; 1971 JD 4020; 1962 JD 4010D; JD 4020; JD 3020G; JD 3010G; JD 2510; JD 730; JD 720D; JD 630G; JD 620; Oliver 2150; IH 1206 cab; Oliver 70; CA Allis Chalmers.

COMBINES: JD 7700G w/6 row corn; JD 6600G; JD 3300G w/10' grain & 2 row corn; JD 3300G; JD 95 w/12' grain & 3 row corn; JD 55 w/2 row corn; JD 30; MF 510 w/4 row wide corn; NH 985 w/13' grain; IH 203 w/grain & 2 row corn; MM Uni harvester. COMBINES CAN BE PURCHASED BY APPROVED NOTE TO JOHN DEERE WITH INTEREST WAIVED UNTIL 9/1/78.

WINDROWERS & MOWER CONDITIONERS: JD 800 w/10' plat. & cond.; Owatonna w/10' plat. & cond.; Hesston 110 w/8' plat. & cond.; New Idea 290 9' Cut/ditioner; Gehl 9' mower cond.; NH 469 haybine.

BALERS: JD 224 wire baler w/ejector; JD 14T w/ejector; NH 69 w/thower; IH 46 w/chute.

FORAGE HARVESTERS: Fox 1F546 w/1 row corn; JD 38 w/1 row corn; Fox w/2 row corn.

PLANTERS: JD 7000 6 row narrow; (2) JD 7000 4 row; JD 1440; JD 1260 plateless; JD 694; (3) JD 494A; (3) JD 494; JD 290; IH 658 6 row w/liquid; IH 58 4 row w/liquid.

GRAIN DRILLS: JD 8350; FBB; Van Brundt 14x7; IH #10 16x7; Oliver; Ontario.

PLOWS: JD 2500 4 btm. reset; JD 345 5 btm. hydra reset; JD 355 5 btm. 16" hydra reset ON LAND; JD 145 HL 5 btm. 16" semi-mtd.; JD 777 4 btm. trailer; Oliver 4 btm. 16" trip trailer; Oliver 5 btm. 16" hydra reset; semi-mtd.; MF 1 btm. 2 way.

CHISEL PLOWS: Ford 10' trailer; Blandon 11' 3 pt.; Mohawk 7' 3 pt.

HARROWS: JD 110 11'5"; BWF 11'5"; AW 11'5"; IH #37 11'4".

NEW EQUIP.: Calhoun 6 & 8 ton wagons; Hanson 300 gal. sprayer; 300 & 500 Speedy sprayers; Favorite gravity box w/wagon.

MISC. ITEMS: Westgo 6 row narrow tine tooth cult.; Dunham single gang packer w/transport; Walden 8' tractor frnt. blade; chain saws; welder; space heater; and many other misc. items.

ALL ITEMS ARE SUBJECT TO PRIVATE SALE PRIOR TO AUCTION DATE.

Terms: Cash or check, sale day.

REFRESHMENTS SERVED

Ordered By:

**AGWAY, INC.  
CHAPMAN EQUIPMENT CENTER**

Conducted by:  
RALPH W. ZETTLEMOYER AUCTION CO.  
R.D. #1, Breinigsville, Pa. 18031  
(215) 285-4616

## PUBLIC SALE

OF FARM MACHINERY  
CORN & PIGS

3 mile South of Quarryville along Route 222.

WEDNESDAY, MARCH 22, 1978

11:00 A.M.

John Deere 620 tractor, John Deere B tractor, John Deere M tractor w/Henderson manure loader, John Deere F125 - 3 bottom 16 in. trip plow, Kasten plow harrow, JD 24 KBA disc (less transport), Brillion cultipacker, JD 9 ft. spring harrow, JD 2 row cultivator, JD 30 combine w/bin & PTO, JD N-PTO manure spreader. Farmall cub with starter, 5 ft. belly mower, 1-row corn planter & cultivator, AC haybine.

New Idea 323 - 1 row picker  
(1 yr. 50 acres)

JD #5 mower 7 ft. quick-tach, JD crimper, JD 24T baler, 2 flat wagons, 1 JD 1064 gear 18 ft., other 16 ft., New Holland 30 ft. elevator w/motor & attachments, New Idea 5 bar rake, JD-FB 13 disc drill w/grass seeder, New Idea wagon w/gravity bin.

1972 3/4 ton Chevrolet pickup 4 Speed,  
w/racks custom 20.

Approx. 85 ton corn, 200 bu. barley,  
3 ton of 10-20-10 bag fertilizer.

Air compressor, seed cleaner, 2 hole cornsheller w/motor, saw buck for John Deere B, platform scales, cast iron water trough, 1 horse harrow, 4 sets ridging caulkers, pine rough lumber, app. 100 locust posts.

32 ft. extension ladder, hay rope & 2 prong fork, Boggs potato grinder, 100 ft. extension cord, rope & pulley, forks, chains, shovels and many other articles too numerous to mention.

App. 40 head of Shoats, 10 ewes, some with lambs. 1 mean buck.

Terms by:

**CLAUDE F. & MARY E. HART**  
786-2830

J. Everett Kreider } Aucts.  
Carl Diller }

Lunch by Mt. Hope Methodist Women.

## HOUVALE FARMS

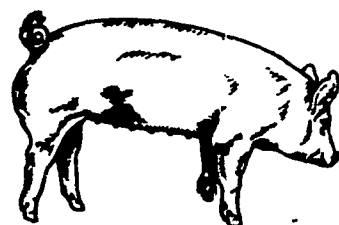
YORKSHIRE PRODUCTION SALE

MARCH 22, 1978

SALE 1 P.M.

Location: Lebanon Area Fairgrounds,  
Evergreen Rd. and Cornwall Rd., Rocherty  
Road East off of Rt. 72, Lebanon, Pa.

YORKSHIRES



SELLING 30 BRED GILTS  
40 OPEN GILTS  
20 BOARS

For Catalogue, Write To:

ELWOOD E. HOUSER

R.D. #5, Box 70, Lebanon, PA. 17042

Phone (717) 272-5798 or (717) 273-2921

Auctioneer: Harry Bachman

## HAWLEY

DAIRY DISPERSAL

Montrose, Pa. Susq. Co.

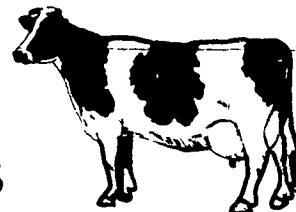
Farm located 1/2 mile south of Montrose via  
Route 706 and 1/2 mile west of Route 29  
Montrose. Watch for Bunnell red auction  
arrows.

FRIDAY, MARCH 10, 1978

12:30 P.M.

60

HI-GRADE  
HOLSTEINS



All 30 day TB and blood tested free herd. Examined for pregnancy and treated for shipping fever. Pa. and Interstate health charts on day of sale.

This Susq. Co. herd features 15 early fall cows, 15 fresh cows, 15 springing heifers and 15 milch cows in various stages of lactation.

Mr. Hawley has raised most of these animals and the balance purchased from various local farms.

The majority of these animals are young and in their first, second and third year of lactation.

Terms: Cash, Approved Check and FHA Welcomed.

LUNCH

Owner:

**LOUIS W. HAWLEY**

R.D. #4, Box 19

Montrose, Pa.

Phone: 717-278-1625

M. L. Bunnell, Auctioneer and Sales Mgr.

Springville, Pa.

Phone 965-2375

Richard J. Sands, Auctioneer

Montrose, Pa.

Phone 278-1266