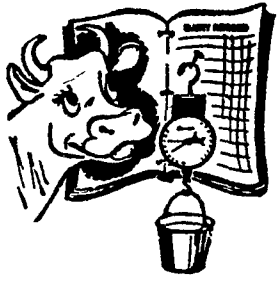


Cumberland County



DHIA Monthly Report

JANUARY

Cumberland County Dairy Herd Improvement records show that 5623 cows in 89 herds were on production testing in January. Of the 72 herds on DHIA, 42 herds had an average fat production of 150 pounds per cow per day for the month. During the month of 100 cows completed their 305 day lactation with 600 pounds of butterfat. DHIA supervisors working with the dairymen to improve efficiency include Harold Boldosser, 130 Gap Road, Carlisle; Mrs. Diane M. Cain, Newville R2; Robert E. Lenker, Carlisle R8; and Edward Stump, Jr. Carlisle R5.

The high herd for the month, based on average daily butterfat production, was that of Mark Leinaweaver, whose 30 Holsteins averaged 56.3 pounds of milk and 1.99 pounds of butterfat per head per day.

A 7-year old Holstein in the D. Herbert Ritter herd took first place in butterfat production in the lactation report. She pumped out 25,233 pounds of milk and 965 pounds of butterfat. The high cows for milk was M. Jo, a 4-year-old Holstein in the J. Shepard Wolf herd whose lactation credits are as follows: 27,098 pounds of milk and 650 pounds of butterfat.

OWNER BREED	NO. COWS	% DAYS IN MILK	LBS. MILK	% FAT	LBS. FAT
Mark E. Leinaweaver B3	30	97	56.3	3.5	1.99
Paul Strock 3	121	92	51.1	3.8	1.95
Clifford Chamberlin 3	37	92	51.1	3.8	1.94
Richard L. Lehman 3	22	90	53.4	3.6	1.92
Paul E. Hornbaker B3	151	93	51.2	3.7	1.88
John M. Lippert B3	31	93	46.6	4.0	1.87
Creedin C. Cornman 3	35	90	45.9	4.0	1.84
Lee A. Hoover, Jr. B3	29	97	53.5	3.4	1.83
N. Hertzler & Sons B3	95	88	47.1	3.8	1.81
Fred B. McGillvray B3	37	84	43.4	4.2	1.81
M. Thomas Sheaffer 3	52	86	48.1	3.7	1.76
Fred Naugle 3	54	83	41.7	4.2	1.75
Harry & Paul Hoch 3	77	87	45.9	3.8	1.74
Roy L. & James Miller B3	52	89	44.7	3.9	1.73

Thrush Brothers B3	99	92	43.0	4.0	1.71
Robert H. Jamison 3	26	86	46.3	3.7	1.70
Berkheimer Farms B3	118	89	44.7	3.8	1.69
D. Clinton Sauder B3	51	86	41.0	4.1	1.69
Donald L. Basehoré 3	37	88	42.5	4.0	1.68
J. B. Brymesser & Sons B3	188	88	42.1	4.0	1.68
Chester C. Weaver B3	66	92	44.4	3.7	1.66
Jeff & Bret Ritter B8	24	95	43.8	3.8	1.66
Chester & Gaien Smith B3	97	90	43.1	3.9	1.66
Herbert B. Shughart B3	27	80	46.5	3.5	1.65
Roy E. Snoke 3	29	86	41.6	4.0	1.65
Lee G. Davidson 3	54	91	40.1	4.1	1.65
J. Shepard Wolf 3	33	90	42.4	3.8	1.62
D. Lehman 3	86	90	42.2	3.8	1.61
Freshair Dairy Farm B3	51	94	41.7	3.9	1.61
Gerald W. Gayman B3	30	85	41.8	3.8	1.59
Roy L. Coover B3	58	91	40.3	3.9	1.59
Harold E. Weaver, Jr. B3	43	91	42.8	3.7	1.58
Elmer Gettle B3	47	84	42.5	3.7	1.58
Melvin E. Stoltzfus B3	37	80	41.5	3.8	1.58
Ashcombe Dover Dairy B3	255	91	41.2	3.8	1.56
Ashcombe Farms B3	263	87	39.3	3.9	1.54
Ralph L. Deitch B3	29	81	38.3	4.0	1.53
Ross H. Holtry B3	61	91	41.6	3.7	1.52
David L. Mains B3	34	89	40.8	3.7	1.52
Paul R. Cornman 3	39	85	37.8	4.0	1.51

David W. Alexander B3	28	93	40.1	3.7	
Leroy Showaker & Son B3	65	75	38.8	3.9	
OWNER NAME OR NUMBER	BREED	AGE	DAYS IN MILK	LBS. MILK	% FAT
Fred Naugle Pretty	3	3-2	305	15,072	4.1

(Turn to Page 124)

IN STOCK NOW

A FULL LINE OF GARDEN SEEDS AND SUPPLIES

ORDERS TAKEN FOR SEED POTATOES

- ★ S-K TOOLS
- ★ GARDEN HOSE
- ★ KNAPSAC SPRAYERS (ALL SIZES)
- ★ DUST BAG KITS
- ★ SHOVELS — HOSE — RAKES
- ★ CATTLE & HOG MINERALS
- ★ CUSTOM CANVASS WORK

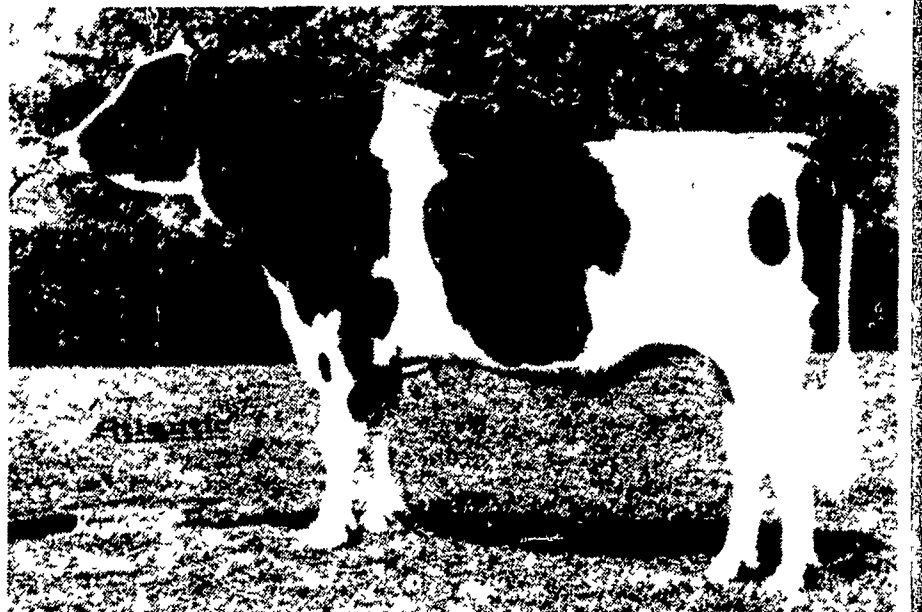
PLAN NOW TO ATTEND OUR OPEN HOUSE WED. & THURS., MARCH 15-16

AARON S. GROFF & SON

FARM & DAIRY STORE
RD3, Ephrata, PA 17522 (Hinkletown)
Phone (717) 354-4631
Store Hours 7 A.M. to 9 P.M.
Closed Tues., Wed. & Sat. at 5:30 P.M.



Our Elevation son is now Gold Medal!



15H175 Lawcrest MARVEX - VG (87)

Gold Medal; Production & Type Qualified (Jan./78)
Production: USDA Summary

106 Daughters in 83 Herds Average 17,187M 3.6% 614F
Predicted Difference (81% rpt.) +1,195M +\$110 +39F

Type: H-FA Summary
29 Classified Daus. Ave. 78.5 (act.) 81.1 (age-adj.)
Predicted Difference (68% rpt.) +.58

His Sire: Round Oak Rag Apple Elevation - EX (96) & GM
His Dam: Lawcrest Admiral Marvel - VG (88)
3 Records over 23,500M & 850F

Marvex is among 21 Gold Medal Holsteins now in daily service!

Atlantic

LIVESTOCK SERVICES BREEDERS COOPERATIVE

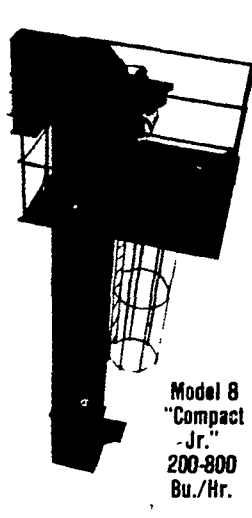
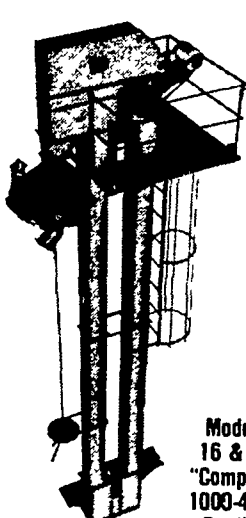
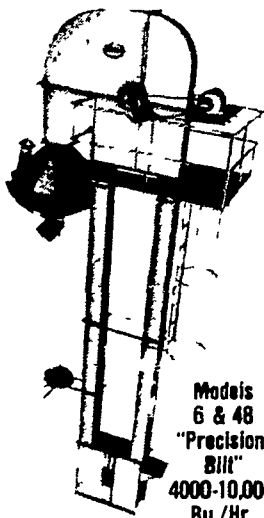
Member - NAL Affiliated Breeders
24-Hour Toll-Free Phones for Service:
Lancaster area 569-0411

Pennsylvania 800-732-0391

Del. & Md. 800-233-0216

The York Line

"Long Famous for Dependable Performance"



FOR HANDLING GRAIN • FEED • FERTILIZER & BULK MATERIALS

SEE US FOR YOUR BUCKET ELEVATOR NEEDS



Loucks

GRAIN EQUIPMENT INC.

Box 216, RD 12 York, PA 17406
PH: 717-755-2690