

Sheep and wool

(Continued from Page 93)

apply for incentive payments at the ASCS office. The wool pool by the group this year will be for one day, probably held the third week in June.

Lamb prices are presently climbing, due to the Easter market. While the group plans no lamb pools, it was announced that the Carlisle Easter Market lamb sale will be March 17.

Roland Freund, Cumberland County Extension Agent, spoke on preparing wool clips. Quality wool, he related is the product of careful flock management maintained throughout the year. This needs to be done to avoid the problems of tender fleeces and foreign matter in the wool which are the most frequent reasons for downgrading wool.

Freund went on to say that wormy, weak, and sick sheep produce tender fleeces when, due to stress or fever, the wool temporarily stops growing. To reduce the chances of this, sheep owners should keep sheep healthy and well fed while not overly fat. The sheep should be wormed regularly. Any illnesses, and lameness must be treated promptly.

While difficult to eliminate straw, burrs, etc., from wool, it is possible to keep sheep cleaner with care. Control of burr producing

weeds in pasture fields should be maintained. Hay and grain should be kept off sheep's backs and heads when they are fed. When bedding is put down, the sheep can be driven outside.

At shearing time, fleece damage can be avoided with a little care. Sheep should be sheared on a clean dry floor, with a clean tarpaulin on the ground if necessary. Wet sheep should not be sheared with all animals housed for 24 hours before shearing time.

Dirty ewes should be crotched out before shearing. Second cuts when shearing should be avoided. Fleeces are to be tied with the flesh-side out. Only paper twine is best when tying the fleeces, as other twine gets into the wool and cannot be removed in processing.

Wool should never be placed in woven plastic bags. Shreds of the plastic get into the fleece. And finally, he added, wool should be stored in a dry clean place.

All 4-H members from Adams, Cumberland, Dauphin, Lebanon, and York County present at the banquet were recognized.

Two directors, Alex Kessel and Robert Holtry, were elected for terms until 1981. Also elected to office was Edward Luhn, as auditor.

Del. dairy contest set

DOVER, Del. — A state dairy cattle judging contest has been announced by the Cooperative Extension Service of the University of Delaware and the Delaware Holstein Association. The "armchair" style contest is open to all Delaware youth and families. As an incentive to participate, \$140 in prizes is being offered to individuals, 4-H clubs, FFA chapters, and families in the

Hooper hires Yingling

INTERCOURSE — The sales department of C. B. Hooper & Son Inc. announces the addition of Paul L. Yingling to the wholegoods sales staff. Yingling is formerly of Martinsburg, where he was a dairy farmer. A 1971 graduate of Penn State University with an associate degree in agriculture business and farm management, Yingling operated in partnership a 250 acre farm with 75 dairy cows. In 1968 he was awarded the Keystone

1977 Hoard's Dairyman Judging Contest.

Winnres in the Delaware competition will be determined on the basis of Hoard's national placings. The contest is open to Delaware residents only. Participants may compete individually or as a family, club or team. Deadline for entries is March 17.

Entry blanks and contest

Farmer Degree and was a finalist in the Pennsylvania Holstein Association's Distinguished Jr. Member Club. In 1976 Mr. and Mrs. Yingling were the first place winners in the Interstate Milk Producers Young Cooperators Program.

Yingling and his family have been active members of the Clover Creek Church of the Brethren. Paul and his wife, Cindy, are the parents of two children; Mark, age 3 and Amy Jo, 9 months.

New Holland

(Continued from Page 108)

re-stack load units in another location for feeding.

A new Hayliner baler, the Model 310 from Sperry New Holland offers capacity and reliability for moderate-size haying operations. The "310" is available in either pto or engine drive, standard 48-tooth or 80-tooth Super-Sweep pickups. Bale chamber size is 14 x 18 inches.

Options include quarter-turn bale chute for use with automatic bale wagons, a plain bale chute or a new pto bale thrower.

The new Model 70 bale thrower fits any of the current 14 by 18 size baler series. It throws bales of up to 80 pounds and 36-inch length to a trailing wagon. Variable belt speed control lets the operator target bales for the rear, center or front of the load. A tongue-guide tracks the thrower to keep

bales headed for the wagon on corners. In addition, a hydraulic override is available for downhill baling.

The new thrower hinges up to allow full access to the bale chamber or to discharge bales on the ground. In the retracted position, overall length is shortened 18 inches to simplify storage in narrow sheds.

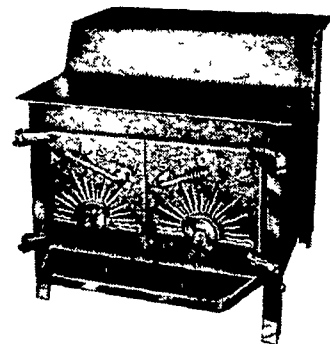
pictures are available from county Extension agents in Newark, Dover, and Georgetown. To be eligible for a Delaware award, entries should be sent to Dr. George Haenlein, Extension diary specialist, Agricultural Hall,

University of Delaware, Newark, 19711.

Delaware winners will be announced about May 20. Prizes will be awarded at the time of the Delaware Dairy Princess Contest at the Delaware State Fair this Summer.

THE ALASKA WOOD BURNING STOVE AND FIREPLACE

(A Modern American Version of a Canadian Step Stove)



Limited Dealerships Available

Cost Less Built Better

Don't let anyone tell you a baffle system isn't important!

STORE HOURS:
Closed Mon. and Tues.
Wed. thru Fri. 10 to 8
Sat. 10 to 4
Other hours by appointment

- ★ Heating One Room Or Entire Home
- ★ 5 Handsome Models Sand Blasted Finish
- ★ Construction—
1/4" & 5/16" steel boiler plate, firebrick lined-extra brick, Airtight cast iron door-greater efficiency, Baffle plate-lower stack temperature.
- ★ Lifetime Guarantee
- ★ Chrome Trimmed
- ★ Hot Air Unit Available

See me at the Gimbel's Mall, Park City during the Park City Builders Show. March 6-11, 1978.

★ Two new models on display.

CHESTER B. NOLT (Dist.)
24 S. Hershey Ave.
Bareville
Leola, Pa. 17540
Phone (717) 656-6898

FISHER SPRAY PAINTERS

(Henry K. Fisher Inc)

SANDBLASTING and SPRAY PAINTING

INTERIOR and EXTERIOR Aerial Ladder Equipment

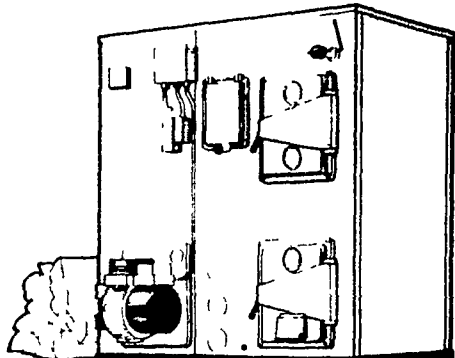
Office & Shop - 667 Hartman Station Rd.
Residence - 2322 Old Philadelphia Pike
Lancaster, Penna.

For FREE Estimates Call 717-393-6530

Two ways to reduce fuel costs.

The HS Tarm Type OT is a modern, efficient multi-fuel boiler for central hot water heating systems. It's a unit which allows you to use low cost wood in addition to electricity and oil or gas as your source of heat. When fueled with wood, it warms your home and provides plenty of hot tap water as well. Should the wood fire go unattended, automatic controls will switch to another fuel, and the boiler will continue to supply all your heating and hot water needs.

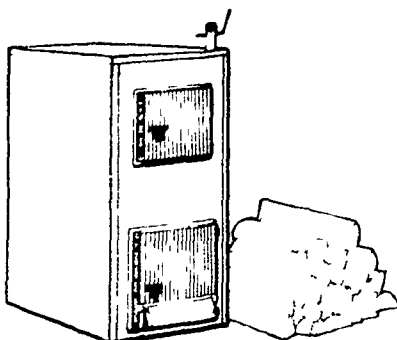
The Tasso A-3 is a cast iron wood-burning boiler made to work in combination with existing oil- or gas-fired hot water heating systems to give you multi-fuel economy. Used with your present boiler, it allows you to heat your whole house with wood all the time, or merely supplement your present fuel by burning wood. Like the HS boiler, the Tasso A-3 offers convenient operation if the wood fire dies out, your oil or gas burner will take over automatically.



The HS Tarm Type OT

Either the HS Tarm Type OT or the Tasso A-3 will give you reliable service while helping to protect you from fuel shortages and the high cost of commercial fuels. Choose the boiler that's right for you!

The Tasso A-3



Importer Tekton Corporation, Conway, MA 01341

DISTRIBUTED BY:

THE HEAT SHED

Rock Ridge Rd.
Revere, PA 18953
(215) 847-2224

For the big haul or little haul. . . MGS TRAILERS

MGS Trailers are exceptionally versatile for contractors, farmers, gardeners, landscapers, movers, appliance dealers, motorcyclists, snowmobilers, car dealers, antique car buffs, and anyone with bulky materials to move. MGS Trailers are built with strength and mobility from end to end; top to bottom. Designed and crafted for easy service and long, dependable usage by Pennsylvania Dutch craftsmen. MGS Trailers offer a wide variety of sizes, styles and heavy-duty equipment to assure you'll get the trailer to exactly meet your needs.

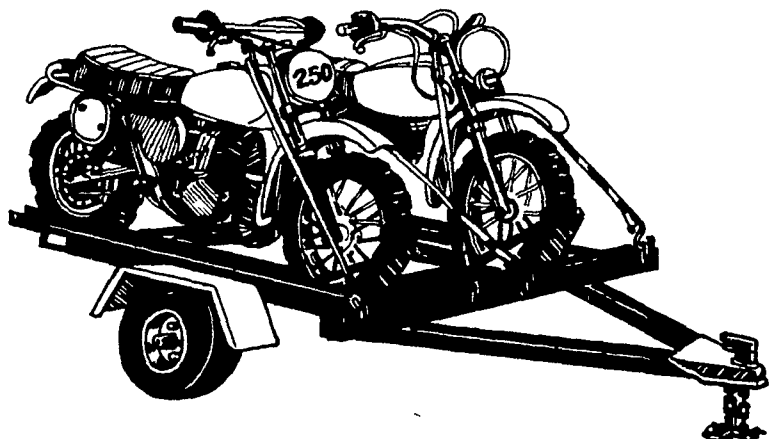
MOTORCYCLE TRAILER

Model 900MC

- Safety chains
- 1-7/8" ball coupler
- 4-point electrical connector
- Stop, tail and turn signal lights
- License plate holder and light
- Reflectors
- Two cycle rails

- Third cycle rail provisions
- Three-ply springs
- Heavy-duty automotive wheel-axle assembly
- 1180 lbs. capacity using two 4.80 x 8B tires
- Or 1430 lbs. capacity using two 5.70 x 8B tires
- A-frame tongue

OPTIONAL FEATURE Extra cycle rail, loading ramp



MGS TRAILERS

DIRECT FROM FACTORY SALES



Division of MGS, Inc.

Located along Muddy Creek Church Rd., R D 3, Denver, PA 17547
(1 Mile North of Pa. Turnpike, Exit 21)

Open daily 8 to 5, Saturday 8 to 12 noon, Phone: 245-267-7528

