



Gehl Company representatives who spent five days in Acapulco, Mexico, were, left to right: Mr. and Mrs. Waldo Arnett, Hagerstown, Md; Mr. and Mrs. Isaac Wenger, Lititz; Mr. and Mrs. John Zimmerman, Richland; and Mr. and Mrs. Don Powell, Strasburg.

## Top Gehl representatives rewarded

WEST BEND, Wis. — Over 600 of Gehl's dealer family from all parts of the U.S. and the Province of Ontario, Canada earned five-day trips to Acapulco for their sales performance during the 1977 Show-up-in-Acapulco promotion. Included in the group were several from Lancaster Farming's prime coverage area.

The winners were given an advance preview of new products, new product features, service training and marketing activities.

The Gehl Company, with its headquarters and a main plant here in West Bend,

Wis. was founded in 1859, and today, is one of the world's leading manufacturers of forage harvesting and hay making equipment.

Dealers from this area who were included in the Acapulco trip were Mr. and Mrs. Waldo Arnett representing Arnett's Garage of Hagerstown, Md.; Mr. and Mrs. John Zimmerman, representing Lebanon Valley, Richland; Mr. and Mrs. Isaac Wenger, representing Binkley and Hurst, Lititz; and Mr. and Mrs. Don Powell, of Strasburg, Gehl's district sales representative.

## New poultry

(Continued from Page 94)

and uses the same egg collection system used on the patented Keenco Contour "A" Line and either the flat chain, link chain, or F-80 chain feeder.

"A" frames on cage systems aren't new. However, the "A" frames on the new Egg Maker cage systems are all new. Instead of using dozens of nuts and bolts to fasten the support members to the "A" frame, the new Diamond system uses a unique Quick-Lock. Parts clip and lock together to reduce erection time and produce a more rigid cage row.

The Feedsaver System is the first truly controlled feeding system. Battery powered hoppers travel

down the cage row at timed intervals and deposit a predetermined amount of feed in the deep "V" troughs. All birds get the same fresh feed. There's no highgrading. A feed sensor automatically compensates for differences in bird's feeding habits. The Feedsaver System cuts feed and electric energy costs. For some, the feed savings are substantial.

Two new types of Diamond chain feeders are also available...the flat chain and the link chain...in addition to the Keenco F-80 chain feeder. All are compatible with the new cage systems and deliver a balanced ration to the birds. Trough design reduces feed waste from billing-out.



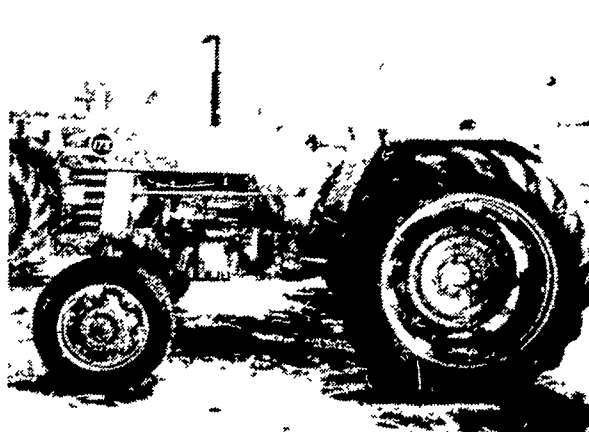
### EARLY BIRD

### Specials



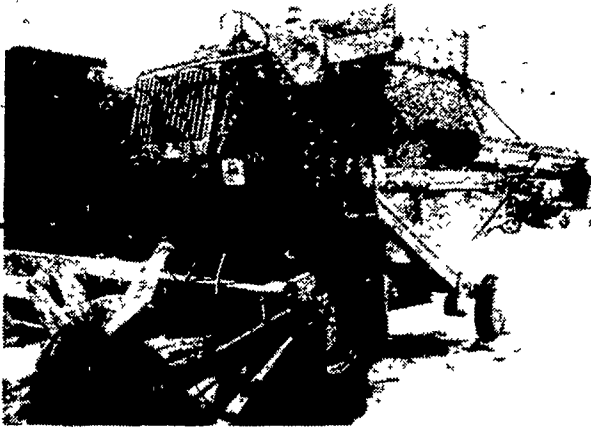
#### USED GRAIN DRILL

MF 1138 21x7 Plain ..... **\$1,650**



#### USED TRACTOR

MF 175 Diesel..... **\$5,950**



#### USED COMBINE

John Deere 3300 w/13' Platform ..... **\$15,700**



#### USED PLOW

John Deere 2-16" Roll-Over... **\$1,800**

#### USED HAYBINE SPECIALS

John Deere 1209 (LIKE NEW)	\$3,950.00
(2) New Holland 479	2,750.00
New Holland 469	2,650.00
Hesston PT-10 (LIKE NEW)	2,500.00
Allis Chalmers 904	725.00
M C Rotary Scythe	1,075.00

#### USED BALER SPECIALS

(2) John Deere 24T w/Ejector	\$1,550.00
New Holland 78 w/Thrower	750.00
John Deere 14T w/Thrower	950.00
John Deere 14T	750.00
New Holland 67 Baler	1,150.00
New Holland 69 Baler	1,475.00
New Holland 269 Baler	2,150.00

#### USED TRACTORS

John Deere 4430 w/Cab, air, 20 8x38 Rears, Power Shift	\$22,500.00
John Deere 2020 Diesel	5,750.00
John Deere 1520	5,500.00

#### NEW HAYBINE SPECIALS

New Holland 477 - 7' Cut	\$3,400.00
--------------------------	------------

#### USED SPREADERS

NH 518 single roller, w/hyd end gate and new web	\$1,150.00
NH 516 triple beater, w/new web chain	750.00
NI #213 triple beater	950.00
NI #214 triple roller	650.00

#### USED PLANTER SPECIALS

Tag 11650 John Deere 1250 - 6 Row Plateless	\$2,350.00
11876 John Deere 494A - 4 Row	1,250.00
11953 John Deere 494A - 4 Row	750.00
11941 John Deere 494A - 4 row	650.00
11934 John Deere 494A - 4 Row	1,275.00
11889 IH 4 Row	650.00
11935 John Deere 490 - 4 Row	575.00
1105 AC 6 Row No Till w/Monitor	2,950.00

#### USED COMBINE SPECIALS

John Deere 55 Corn Soybean Special 12' Head	\$11,700.00
IH #403 Hydro w/12' Platform 3 Row N. L. H	12,500.00
AC - C w/4 Row Corn Head 14' Platform	8,750.00
John Deere 55 w/12' Platform	950.00
AC-G Diesel w/13' Platform, 6 Row 30" head	\$18,500.00

#### MISCELLANEOUS

John Deere 1210 400 bu Grain Cart (like new)	\$3,500.00
New Set 18 4x30 Snap on Duals w/New Goodyear 6 Ply Tires	\$1,050.00

#### USED TILLAGE SPECIALS

John Deere 4-16" Hyd Rese Three Point	\$2,250.00
Ford 4-18" Semi-Mount Spring Rese	2,450.00

**SPECIAL SAVINGS FOR YOU ON HAY TOOLS REPLACEMENT PARTS**  
Over-the-Counter Sales  
March 1st thru 15th  
5% Cash Discount. \$ 50 to \$100  
10% Cash Discount. \$100 or More

## Evergreen Tractor Co.



30 EVERGREEN RD.  
LEBANON, PA 17042  
PHONE (717) 272-4641

When Power Fails depend on **PINCOR** Electric Plants



16 KW 25 KW 50 KW

- Rated for continuous duty 12 KW to 50 KW
- Tractor driven and automatic engine driven
- High motor starting capacities
- Slow speed 1800 RPM operation
- Heavy duty construction
- Cool running triple chain drive transmission
- Rainproof construction
- Meets NEMA codes
- Completely wired control box
- Trailer and 3-point hitch options

### HAVERSTICK BROS.

2111 Stone Mill Rd. • Lancaster, Pa.  
Phone (717) 392-5722