



Hy-Cross Company

Presents
A 2nd Local Record From

Hy-Line W-36

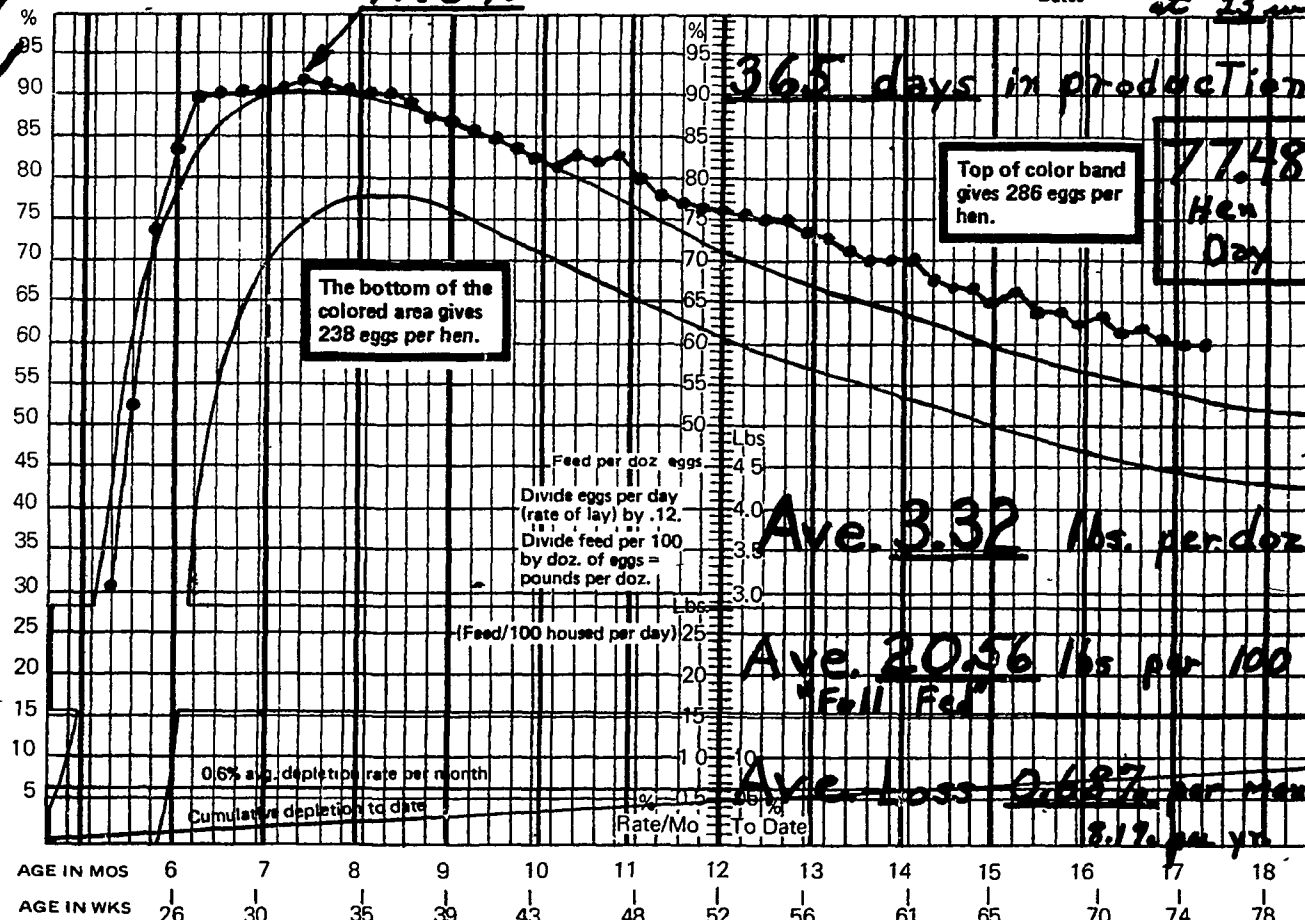
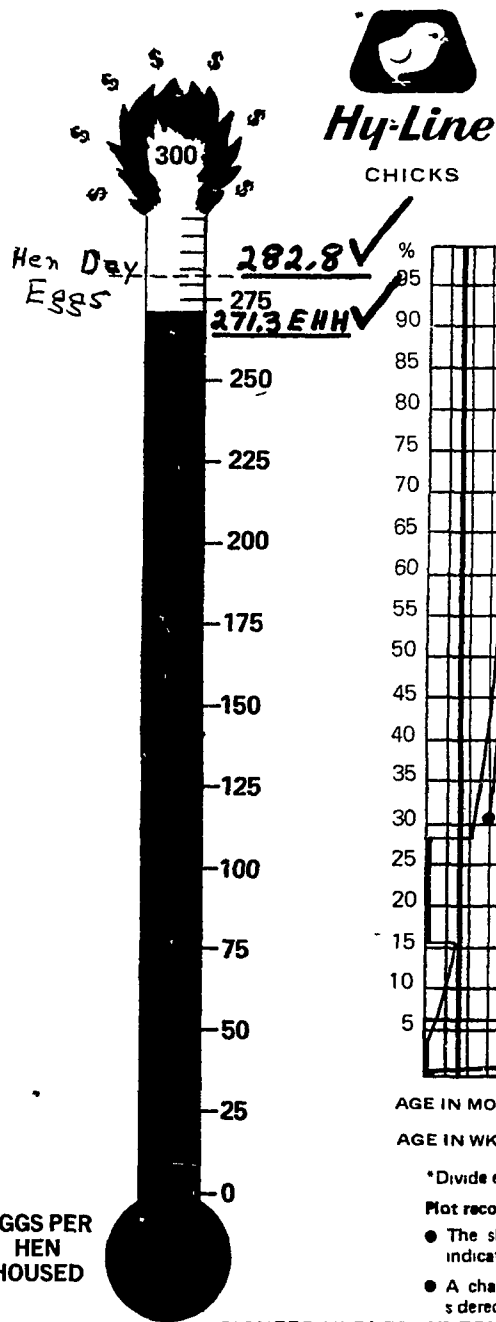
“Take Another Look”
Then???



W-36 HEN HOUSED* RECORDS GUIDE

Graph Your Flock's Records on These Guides

(Hen-housed rate of lay, % depletion per month and cumulative, feed per 100 birds housed per day, feed per dozen eggs, and eggs per hen housed to date)



Name **HC-58**
Flock size, code **E-13**
Housed on **9/8/76**
Dates **at 23 weeks of age**

*Divide eggs or feed per day or number of birds dead by original number of birds housed, and multiply by 100 to give record to plot

Plot records at the midpoint of each week.

- The slanting per cent production curve begins after 8 months. It indicates the normal decrease in rate of lay.
- A charted production line parallel to the colored band may be considered normal after 8 months of age.
- A declining line compared to the colored band indicates deteriorating performance after 8 months of age. Try to determine management change or disease control necessary to help the flock.
- A climbing charted production line indicates improving performance after 8 months of age. The very best flocks go above the blue area.
- Feed used per dozen increases with age of flock, after peak production.

Printed in U.S.A. HS956 (Rev. 8/74)

TRY THE NEW HY-LINE W-36

LOCAL RECORDS ARE PROOF OF PERFORMANCE LEADERSHIP IN:

- ★ EGG NUMBERS
- ★ EGG QUALITY
- ★ EGG VALUE
- ★ FEED EFFICIENCY
- ★ LIVABILITY
- ★ PERSISTANCY
- ★ VERY STRONG SHELLS

TRY THE NEW HY-LINE W-36 NOW!



CONTACT

HY-CROSS COMPANY
4037 Swamp Road
Doylestown, Pa. 18901
(215) 348-2661

ARTHUR DETWEILER
Box 84
Danboro, Pa. 18916
(215) 348-3117

FRANK M. LOEW, JR.
RD 4
Quakertown, Pa. 18951
(215) 536-3356

BEN K. STOLTZFUS
384 E. Main St.
Leola, Pa. 17540

DON KELSEY
130 Asl'lea Gardens
New Holland, Pa. 17557
(717) 354-7479

IN NEW JERSEY
EMAN RITTER
Vineland, N.J.
(609) 697-0271

Hy-Line is a brand name. Numbers and letters refer to varieties.
© Registered Trademarks of Pioneer Hi-bred International, Inc., Des Moines, Ia., U.S.A.