

Poultry Market Reports

Weekly New York Egg Market

From Monday, February 6 to Friday, February 10

	Mon.	Tues.	Wed.	Thurs.	Fri.
WHITE					
Ex Large	64	64	66	66	68
Large	63	63	65	65	67
Mediums	60	60	62	62	64
Pullets	47	47	47	47	47
Peeweese	33	33	33	33	33
BROWN					
Large	71	71	71	73	73
Mediums	Unquoted				
Pullets	Unquoted				
Peeweese	Unquoted				

Off Grade
 Large 56 56 58 58 60
 Checks 29 29 31 31 31
 Tone - Supplies very well cleared, cartoned orders irregular.

Copyright 1977 Urner Barry Publications

N. E. Weekly Shell Egg Report

February 8, 1978

Prices paid per dozen Grade "A" Brown eggs in cartons delivered to retail stores:

	Ex. Large	Large	Medium	Small
MASS. +	Not Available Due To Adverse Weather			
NEW HAMP.	67-73	66-72	63-69	37-43
Mostly	72-73	70-71	67-68	41-42
R.I.	Not Available Due To Adverse Weather			
VERMONT	74-80	73-78	70-76	-
Mostly	76-77	74-75	71-72	-
MAINE	73-75	72-74	69-71	43-45

+ Includes Central and Western Sections Only.

Nest Run Eggs

Prices are from Egg Clearinghouse, Inc., (ECI) Durham, N.E. and reflect trading prices for gradable nest run eggs (GNR) on ECI, a nationwide trading center for producers, packers and marketers. GNR eggs are classified by weight in 30-dozen cases, and traded in lots of either 300 or 750 cases. Prices are FOB buyers dock, and are computed Tuesday and Thursday of each week. This week's prices for each classification were:

Classification	New Weight Per Case	Tuesday	Thursday
Extra Large	51 lbs.		
Class 1 - Large	48 lbs.	54	56
Class 2 - Large	45 lbs.	52	55
Class 3 - Medium	42 lbs.	50	53
Class 4 - Small	39 lbs.	38	38
Breaking Stock	48 lbs.	36	37
Checks	48 lbs.	29	30

Lancaster Farming

P.O. Box 266 - Lititz, PA 17543
 Office: 22 E. Main St., Lititz, PA 17543
 Record-Express Office Building
 Phone: Lancaster 717-394-3047
 or Lititz 717-626-1164

Robert G. Campbell, Publisher
 Dieter Krieg, Editor
 Joanne Spahr, Assistant Editor
 Kendace Borry, Associate Editor
 Laurel Schaeffer, Staff Correspondent
 Joyce Bupp, Staff Correspondent

Subscription Price:
 \$6.00 per year; \$10.00 - 2 years

\$8.00 per year outside of
 PA, NJ, MD, DE, NY, VA & WV

Established November 4, 1955
 Published every Saturday
 by Lancaster Farming, Lititz, PA

Second Class Postage paid at Lititz, PA 17543

For address change form or new subscription see Classified Section

Members of Newspaper Farm Editors Assn., Pa. Newspaper Publishers Association, and National Newspaper Association.

Delmarva Poultry

February 8, 1978

Ready-to-cook: Light as plants still attempting to deliver Mondays kill Slaughter today light with none yesterday. Today's little asking prices to few to report. Live supplies ample with weights increasing to desired levels in most quarters. Undertone firm.

Mondays broiler/fryer negotiated prices for immediate includes mostly multiple-drop shipments to New York City from Delmarva.

Range: US Grade A 41-44; Plant Grade 41-42; Premium X US Grade A 49.00; Premium X Plant Grade 47.00.

Wtd. Avg. US Grade A 42.55; Plant Grade 42.03; Premium X US Grade A 49.00; Premium X Plant Grade 47.00.

X-Includes special services, selected competitive brands, etc.

Baltimore Eggs

February 8, 1978

EGGS: Demand irregular and mostly for large. Supplies of large sizes adequate but mediums scarce in some quarters.

Cartoned eggs: Prices to retailers, state graded (min one case sale) white. Grade A Large: 67-70; Grade A Medium: 63-67.

Philadelphia Eggs

February 8, 1978

EGGS: Prices unchanged cartoning demand good however deliveries very difficult in many quarters. Offerings adequate. Undertone firm.

Prices to retailers: Sales to volume buyers, consumer grades white eggs in cartons, delivered: Store door. A Extra Large: 61-65; A Large: 60-64; A Medium: 56-60.

PACMA Facts

PACMA-FACTS

The following market is supplied by PACMA-FACTS, a direct marketing organization affiliated with the Pennsylvania Farmers' Association. Participating poultrymen are members of PACMA, which employs a fowl marketing agent, The Farmers' Agricultural Cooperative Trading Society (FACT) - to sell members' fowl. PACMA works directly with the PFA poultrymen in the program.

There were no prices determined this week due to the adverse weather.

Could Be A Success

A thoughtful father once wrote to a friend that "If my son is getting as much out of college as his college is getting out of me, he'll be a success."

Hay Markets

Green Dragon Hay

Ephrata, Pa.

February 3, 1978

PRICES PER TON: 109 lds. hay & 78 lds. straw.
 Alfalfa 93.00-109.00 #123.00; Timothy 93.00-101.00; Mixed hay 85.00-106.00, few to 140.00; Clover, few 88.00-95.00; Meadow hay 90.00 & 93.00; Straw 91.00-107.00, #113.00; Ear corn, 11 lds. 61.00-64.50, #113.00; Corn Fodder, 2 lds. 73.00 & 82.00.

New Holland Hay

New Holland

Sales Stables

February 6, 1978

Total 32 loads.
 Mixed hay 80-94; alfalfa 95-105; 1 load broom grass 90; timothy hay 76-105; straw 103-131; corn fodder 58-92; 1 load soybean stubble 84.

Eastern Pa. & N.J. Poultry

February 8, 1978

Prices steady on light type hens. Farms offering light for a light processor interest. Slaughter so far this week has been very light due to adverse weather. Offerings of heavy type adequate for a fair call.

PRICES PAID AT FARM: Light Type hens 7-8½, mostly 8½; FOB plant 10½.

Heavy type hens: TFEWR.

Vintage Hay

Thursday, February 9

Total 17 loads hay, 5 loads straw.

First crop alfalfa, 100-107; second and third crop 103-120; clover, timothy, and mixed hay 100-107; straw 128-156.

Regional Hay

February 6, 1978

(All hay No. 2 and better, prices paid by dealer at the farm & per ton.)

Hay & Straw steady. Alfalfa 90.00-110.00; Mixed hay 85.00-95.00; Timothy hay 75.00-85.00; Straw 75.00-90.00; Mulch 50.00-75.00.

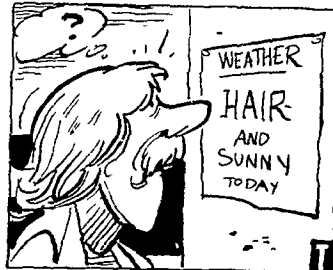
Harvey Z. Martin Hay Market

Leola, Pa.

Wednesday, Feb. 8, 1978

26 Loads

Alfalfa 100 to 132.50; Timothy 2 loads 111 and 120; Mixed hay 101 to 120; straw 108 to 131, 1 by the load at 135; corn 2 loads-62.50 and 63.00.



Human hair provides warmth and protects the skin, but did you know that it is also used to predict the weather? According to The World Book Encyclopedia, meteorologists use a device called a hair hygrometer, which measures relative humidity through the changing length of hair as its absorption of moisture increases or decreases.

TOP OF THE HOG MARKET

DANVILLE LIVESTOCK MARKET

OLD ROUTE 11
 DANVILLE, PA 17821
 717-275-2880



Market your hogs the auction way.

SALE EVERY MONDAY 2 P.M.

Melvin M. Lehman (Owner)

CAN WE HATCH YOU

A LITTLE PROFIT?



Look at it this way —

The profit potential of your laying flock starts when the pullets are hatched.

Order **DEKALB** chicks from Moyer's Chicks and you're off to a profitable beginning.

Moyer's CHICKS, INC.

DEKALB
 BROWN & WHITE
 EGG LAYERS

Quakertown, PA. 18951
 (215) 536-3155

HUBBARD
 WHITE MT.
 BROILERS