

## Pennsylvanians get \$27.7 billion tax bill

HARRISBURG — Pennsylvania taxpayers will be required to pay approximately \$27.7 billion in Federal taxes as their share of the cost of the federal

spending budget of \$500 billion proposed by President Carter for the federal fiscal year beginning October 1, 1978, according to an estimate by the Penn-

sylvanians Chamber of Commerce

This estimate was based on the State Chamber's calculations that Pennsylvania's taxpayers bear 5.54 per cent of all Federal taxes.

In 1968, just ten years ago, President Johnson's proposed budget was \$186 billion, and Pennsylvania's estimated share was \$11.2 billion

The State Chamber pointed out that any change

which President Carter or Congress may make in this budget will reduce or increase the amount that Pennsylvania taxpayers will have to bear.

The \$27.7 billion share, which would be borne by Pennsylvania taxpayers to support the President's proposed budget, is over \$12 billion more than the amount of wages and salaries paid to Pennsylvania employees of manufacturing industries in 1976.

### Prize awarded

MYERSTOWN -- A Lebanon County farm equipment manufacturing firm recently received national recognition for its new promotional piece featuring the Little David silo unloader.

Weaver Star Silo, Inc., here along with Van Dale,

Inc., Minneapolis, Minn. the national distributor of the local firm's unloader, received first place at the 1978 National Silos Association Convention held in Phoenix, Arizona. The brochure entered in the national contest won first place in the two-color division.

## Poultry inspection shift opposed

ATLANTA, Ga. — The board of directors of the Poultry and Egg Institute of America (PEIA) has unanimously voted to oppose any move of poultry and egg inspection from the Department of Agriculture to the Food and Drug Administration.

Kenneth Longacre, chairman of the board, said the Institute has been active in the passage of the Poultry Products Inspection Act and the Egg Products Inspection Act. "The association supported Congress' decision to place authority for these acts under the Secretary of Agriculture and the directors have reaffirmed that position today in opposing any transfer of authority to the FDA," said Longacre.

The board also expressed its concern over an apparent plan by USDA to reorganize its Food Safety and Quality Service along functional lines instead of its current commodity approach. Though details of the planned reorganization are not available to industry, there was unanimous agreement that PEIA oppose any move away from a commodity-oriented organization of FSQS.

Longacre said the board held a lengthy discussion over the current concern of farmers for a fair return on their products. The Policy Subcommittee of the board of directors has been asked to review this matter. PEIA currently has a policy of opposing government regulation to achieve production controls.

## Egg marketers to meet

LANCASTER -- Luke Souder, traffic and safety director for Victor F. Weaver, Inc. of New Holland, will be the guest speaker at the Feb. 10 meeting of the Pennsylvania Egg Marketing Association. The group holds its meetings at the Sheraton-Conestoga in Lancaster.

Souder is in charge of OSHA laws and inspections and can fill his audience in on what they should know about safety and health regulations.

The Feb. 10 meeting takes the place of the January

meeting which was cancelled due to inclement weather. In addition to the presentation by Souder, the group will hold an election of officers. Activities begin at 7 p.m.

xxx

Maryland agriculture's busiest workers are its bees which are put to work twice in their role as "the wings of agriculture". Bees are essential on pollinating the state's vast apple, peach, pear and other tree fruit crops as well as many important vegetable crops.

# FARMER BOY PRODUCTS

330 FONDERWHITE RD., LEBANON, PA.  
(717) 273-6478

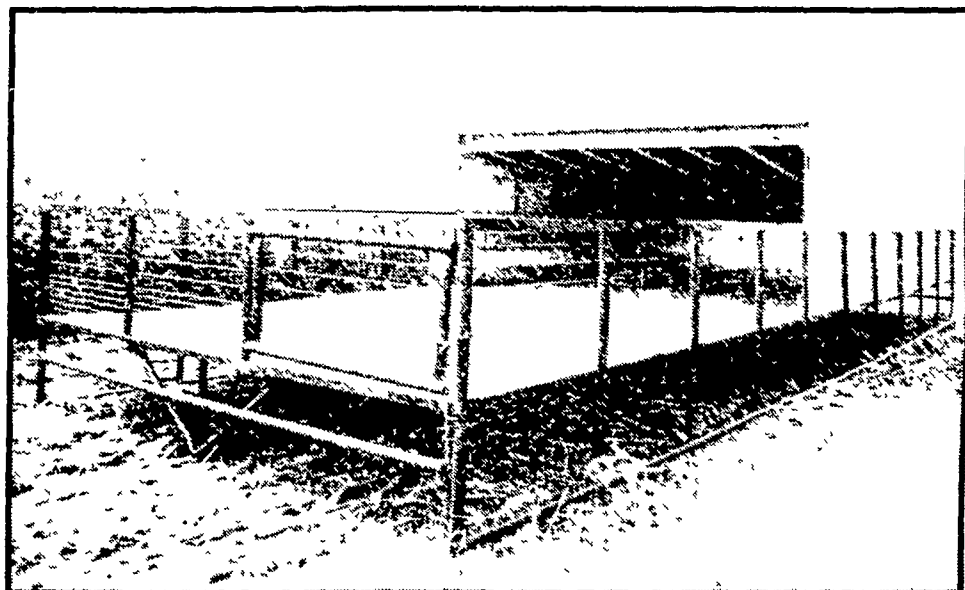
Farmer Boy Products



## MODEL 70 HOG SHELTER

AREAS WHERE MODEL 70's HAVE BEEN DELIVERED

Manheim, Mill Hall, Middleburg, Newville, Bowmansville, Southern New Jersey, Bainbridge



**MODEL 70 HOG SHELTER**  
CAPACITY - 70 Hd. to 220 Lb. Ea.  
SIZE - 14' x 40'  
SLATS - 14' x 20'  
TONGUE & GROOVE - 14' x 20'  
ROOF AREA - 14' x 24'

**NEW**

**NOW AVAILABLE-MODEL 70 KIT**  
SAME AS MODEL 70 BUT UNASSEMBLED. EVERYTHING IS INCLUDED EXCEPT PAINT. ALL PIPE IS PRE-CUT, LUMBER MUST BE CUT TO LENGTH. WIRE FENCING & METAL SIDING IS PRE-CUT, ALL NAILS, BOLTS, SCREWS, HINGES INCLUDED. 30% OFF MODEL 70 LIST.

**NEW**

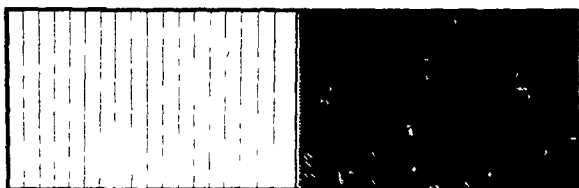
**MODEL 40 HOG SHELTER**  
CAPACITY - 40 Hd. to 220 Lb. Ea.  
SIZE - 10' x 30'  
SLATS - 10' x 15'  
TONGUE & GROOVE - 10' x 15'  
ROOF AREA - 10' x 16'

**NEW**

**NOW AVAILABLE - MODEL 40 KIT**  
SAME AS MODEL 40 BUT UNASSEMBLED. EVERYTHING INCLUDED EXCEPT PAINT. ALL PIPE IS PRE-CUT, LUMBER MUST BE CUT TO LENGTH. WIRE FENCING & METAL SIDING IS PRE-CUT, ALL NAILS, BOLTS, SCREWS, HINGES INCLUDED. 30% OFF MODEL 40 LIST.

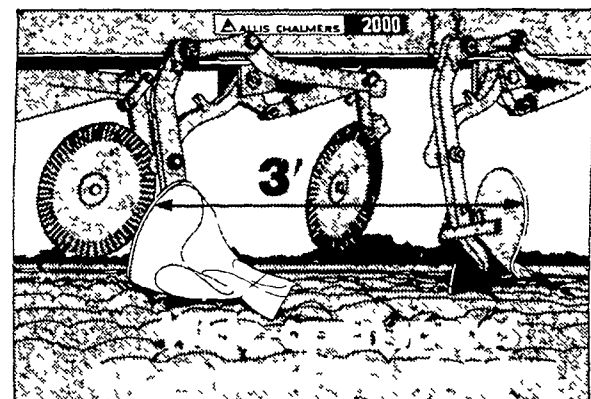
### ALL HOG SHELTERS FEATURE:

- Portable on Skids
- Load Out Door
- Insulated Ceiling Provides Year-Round Use
- Nebraska Slant Roof Design
- Rear Hinged Door Ventilation
- Wood Floors Mean Better Feed Conversion and Health
- Less Than 1/2 The Cost of Permanent Structures
- Not Taxable
- Built To Last 10 Years Or More
- Ideal For Leased Properties
- Delivered Fully Assembled
- 2 1/2" Pipe and Weld Structure with Painted Steel
- Fencing Welded Hog Panels



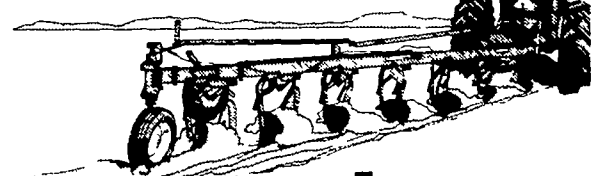
2" x 8" OAK SLATS  
TREATED TONGUE AND GROOVE  
SOLID FLOORING

Optional Weather guard Available  
3x14 ft. Hinged All-Weather Plywood • Straight down for cold weather  
Straight front for extra shade in hot weather • Straight back out of the way in cool weather



Design a plow with a big 3 foot clearance between bottoms increase the width of the furrow to 18 inches make the stub beam longer Happy result the Allis Chalmers 2000 Series Monoframe plow Eight square feet of clearance so more trash can get through High speed plowing without stopping too because Bump & Run bottoms lift hydraulically over obstacles and reset automatically No need to leave the tractor seat! Seeing is believing so come in now!

Monoframe is an Allis Chalmers trademark



The Rising Power in Farming

**ALLIS-CHALMERS**

A. J. NOSS & SON, INC.  
RD 2, Oley, PA  
215-987-6257

GRUMELLI FARM SERVICE  
Quarryville, PA  
717-786-7318

L. H. BRUBAKER, INC.  
Lancaster, PA  
717-397-5179

PETERMAN FARM EQUIPMENT, INC.  
225 York Road  
Carlisle, PA  
717-249-5338

C. J. WONSIDLER BROS.  
Rt 309 & 100  
R2 New Tripoli, PA 18066  
215-767-7611

SHARTLESVILLE FARM EQUIPMENT

Shartlesville, PA  
215-488-1025

H Daniel Wenger, Prop

BHM FARM EQUIPMENT, INC.  
Annville, RD1, PA  
717-867-2211

ROY H. BUCH, INC.  
Ephrata, RD 2  
717-859-2441

AG-INDUSTRIAL EQUIPMENT  
R2, Rising Sun, MD  
301-658-5568

C. J. WONSIDLER BROS.  
RD 1, Quakertown, PA 18951  
215-536-1935  
215-536-7523

AIRVILLE FARM SERVICE  
Hwy 74  
Airville, PA  
717-862-3358