

Barns collapse

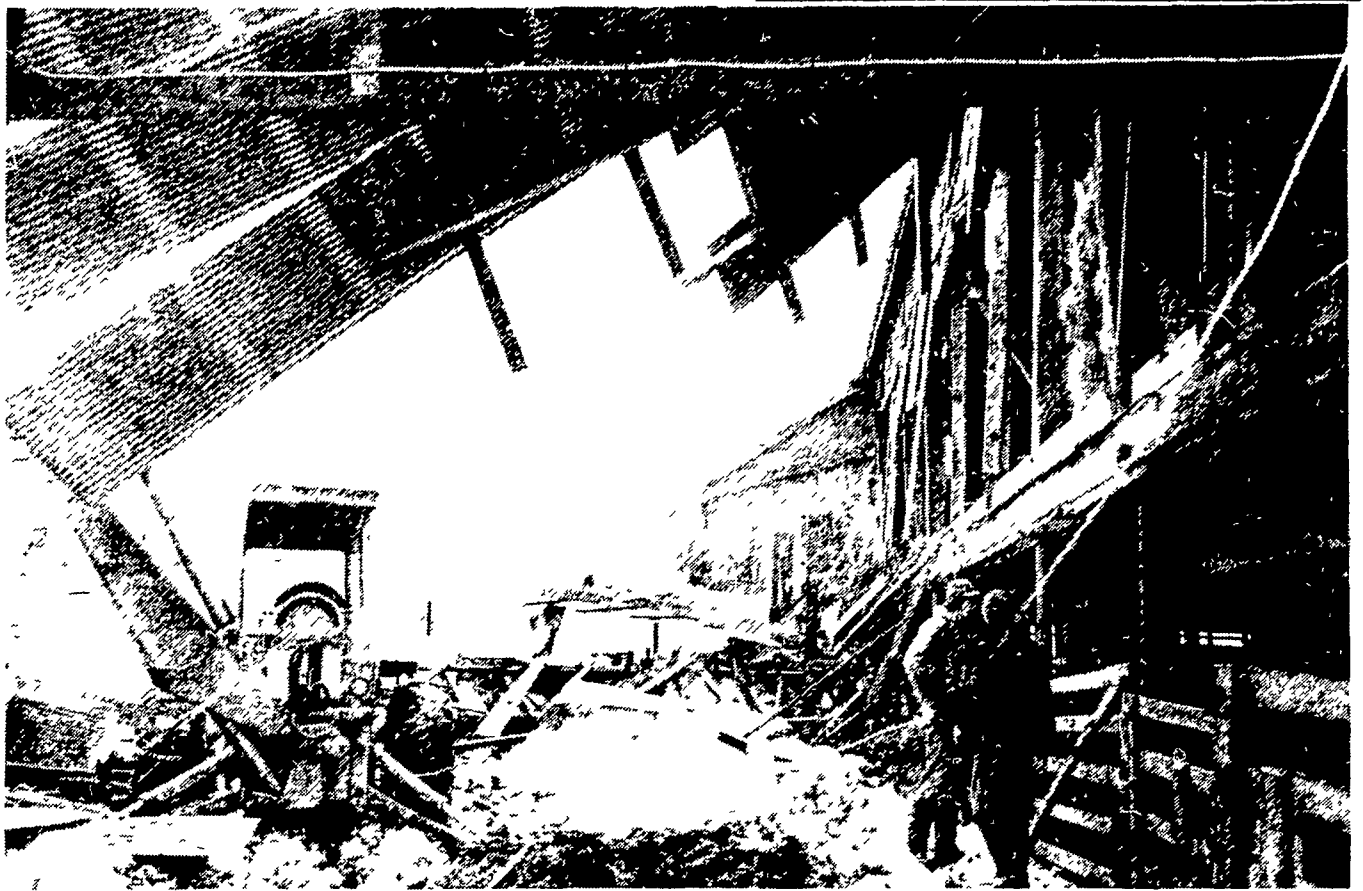
(Continued from Page 1)

in the older barn was undamaged, and milking operations of the 60-cow herd are being done there. A portion of the milking animals are housed at an adjoining heifer barn.

Smyser has been in the dairy business at the East Berlin farm since 1946. As

family, friends and neighbors gathered last weekend to begin cleaning up the tangled and twisted remains, plans were already being formulated to rebuild.

Another York County farm became the victim of January's wrath when Wednesday's rain weighted down an already heavy accumulation of snow on the



The weight of snow and ice damaged numerous barns, homes, and warehouses during the past

week. This heavily damaged barn is on the Roger Perry farm in York County.

roof of a barn owned by Perrydell Farm Dairy, 90 Indian Rock Dam Road, operated by brothers George and Roger Perry.

Rain-laden snow slid from a high barn roof onto an adjoining truss-style lean-to where 55 breeding age heifers were confined. The 40 by 50 feet loosing housing roof plummeted onto the animals killing two and seriously injuring three others that had to be destroyed.

Russell Hartman, who resides at the York R8 farm, saw the structure collapse at 6:30 a.m. and alerted the owners. A portion of the roof at the feeding area was supported with posts and

remained standing. Equipment from a nearby construction firm was brought in to clear away the timbers and roofing material.

A spokesman for the Perrydell farm said he expected the barn to be rebuilt.

Other reports of disasters came from nearly all parts of Pennsylvania, with flood waters rampaging through basements and some barns. Many fields were swamped as of mid-week, after which plummeting temperatures turned them into ice ponds. Numerous roofs and

buildings collapsed, sending damage figures into the hundreds of thousands of dollars.

With highways often blocked due to floods, help could not always be on the way promptly.

The toll of damages continues as of this weekend.



Friends and neighbors gathered at the Smyser Richlawn farm to clear away the remains of a collapsed portion of the dairy barn.

Built with PRIDE

BY **HUSKEE-BILT** SYSTEMS BY HUSKEE-BILT

Thrive Centers
Puts It All
Together

Thrive Centers
Bring Increased
Profits by Environ-
ment Controlling

Ask About Our
Pole Structures

Thrive Centers combine
expert engineering knowhow
and top quality buildings.

- Odors and Manure Handling Almost Eliminated
- Reduced Pig Mortality
- Better Disease Control
- Better Working Conditions Year Around

Proper insulation and ventila-
tion lets animals do better
naturally

HUSKEE-BILT CONSTRUCTION CO.

**YOUR
HUSKEE-BILT
MAN:
IS
MERVIN MILLER**

RD2, Keener Road,
Lititz, Penna.
PH: 717-626-5204

Enormous Appetite for Work.

THE BADGER POW-R-TRAC SILO UN-
LOADER unloads silage top to bottom,
wall to wall! "Fast-feed" features include:
rugged cupped paddles for lower horse-
power requirements; heavy 3/16" auger
flighting; 10" auger with full-length knives
to unload all silage; special chipper wheel
for removing frozen silage from wall.

The Pow-R-Trac can be pulled higher into
the tripod than any other multiple-sus-
pension ring-drive machine, giving you
more storage capacity. Leveling the silage
before feeding is never necessary.

FARMING IS BETTER WITH BADGER

See your Badger
Dealer for complete
details.

<p>SHOW-EASE STALL CO. 523 Willow Rd. Lancaster, PA Ph. (717) 299-2536</p>	<p>GRUMELLI'S FARM SERVICE Mechanics Grove Quarryville, PA Ph. (717) 786-7318</p>	<p>LLOYD E. KREIDER RD 1 Cochranville, PA Ph. (215) 932-4700</p>
<p>CECIL DAIRY SERVICE RD 1 Rt. 274 1/2 Mi. South Rising Sun, MD Ph. (301) 658-6923</p>	<p>A. C. HEISEY FARM EQUIPMENT INC. RD 1 Jonestown, PA Ph. (717) 865-4526</p>	<p>CARL L. SHIRK RD 5 Lebanon, PA Ph. (717) 274-1436</p>
<p>PETERMAN FARM EQUIPMENT, INC. 225 York Road Carlisle, PA Ph. (717) 249-5338</p>	<p>PIKEVILLE EQUIPMENT INC. RD 2 Oley, PA Ph. (215) 987-6277</p>	

A Hydro-Heater Franklin will cut your fuel costs ...
Can heat your whole house, even when it's zero outside!

A 1 1/4" water jacket surrounds the fire on back, sides and bottom. This allows you to place the Hydro-Heater Franklin within 6" of any wall or partition, because the outside temperature never exceeds 210°.

Directional flow tubing captures the heat that is normally lost up the flue. 65% of the heat collected in Hydro-Heater is absorbed by the tubing section. This heat is then transferred to your existing heating system.

AVAILABLE ARE HOT WATER HEAT EXCHANGERS FOR DOMESTIC HOT WATER SYSTEMS

Also Available Are
Fireplace Units

A Hydro Heater Franklin gives you a 300 to 500 per cent increase in heat output over normal Franklin-type stoves. In fact, you get a 175,000 BTU output with a Hydro-Heater Franklin! And with a Hydro-Heater, you don't put up with the "freeze or fry" situation experienced with ordinary Franklin type stoves. That's because Hydro-Heater transfers its heat to your existing home heating system to warm every room in your house. Why settle for just any conventional wood-burning stove when you can have a beautiful, efficient Hydro-Heater Franklin.

FOR FURTHER
INFORMATION CALL:

J. & A. STOVES AT BLUEBALL
MACHINE WORKS

(717) 354-4478 Evenings call (717) 354-9431 (215) 445-4191