

# Public Sales Register

THURS JAN 26 Hall and Love Farm Equipment Dispersal, near Shippensburg, Pa Ralph W Horst, Auctioneer

THURS JAN 26 - 11 A M Public Sale of Holstein Dairy Cattle, Bred Heifers and Milking Equipment Located along Daniel Boone Rd, 2 miles West of Yellow House, 1/2 mile South off Rt 562 at Pet Cemetery near Stonersville, Amity Twp, Berks Co Sale for Everette W Reed John D & George D Frey, Auctioneers

THURS JAN 26 - 11 A M Consignment Sale of Tractors, Farm Machinery, Small Tools, Hardware, Hay and Misc Items located 2 miles South of Gap on Rt 41 at Christiana, Pa Sale managed by Ivan R Yost

THURS JAN 26 - 12 30 P M Public Sale of 48 Reg. Guernseys Held at the Ass'n Sales Pavilion, 6 miles East of Lancaster on Rt 30

THURS JAN 26 - 5-30 P M Public Auction at the Hat & Gavel Auction Co., located one mile North of Lititz along Rt 501 Auctioneer Wilbur H Hosler

FRI JAN 27 - 1 30 P M Public Sale of Pigs Held at Westminster Livestock Auction, Westminster, Md

FRI JAN 27 - 11 30 A M Short Notice Registered and High Grade Holstein Auction Located 1 mile North of Chester, NJ on Pleasant Hill Rd off Rt 206 Owner Everett Wilson Sales Manager and Auctioneer Col Fred R Daniel

FRI JAN 27 - 12 Noon Public Sale of Estate of Charles Harper Located in Huntingdon Co., 3 miles South of Mt Union, Pa along Rt 522 Mark Glick and Dale Gibboney, Auctioneers

FRI JAN. 27 - 5 30 P M Gap Auction Antiques and Household Goods sold at every auction Located off Rt 41, Lancaster Ave opposite Turkey Hill Minit Market - cross RR Bridge Ira Stoltzfus & Son, Auctioneers

SAT JAN 28 12 Noon Sharp Consignment Horse Sale at the Keister's Middleburg Auction Sales, Inc., Rt 522, 3 miles East of Middleburg, 5 miles West of Selinsgrove, Pa Don and Walt Keister, owners Larry Long, Auctioneer

SAT JAN 28 - 10 A M Auction Sale of Inventory of Siloam Farms, Inc., Hog Equipment Located on the premises of Siloam Farms, Inc on the North side of the Siloam Rd, situated in the Trappe Election District of Wicomico Co, Md Take US Rt 13 to Fruitland and watch for sale signs Marva Production Credit Association Pete Richardson, Auctioneer

SAT JAN 28 - 11 A M Public Sale of Farm Machinery, Household Goods and Antiques Located in Chester Co., 2 miles South of Atglen, Pa on Umble Rd, going South on Rt 41, turn right at the Octoraro High School, go about 1 mile, turn left on Umble Rd to first farm Terms by Henry K Umble John M Umble and Steve Petersheim, Auctioneer

SAT JAN 28 - 10 A M Public Sale of Real Estate, Backhoe, Trailer, Truck, Shop Equipment, Tools, Miscellaneous Hardware and Lumber Located at 51 West Hoover St, Mountville, Pa (1 block North of Hollinger's International Harvester) Sale by Harold F Stauffer Howard Shaub and Roy C Probst, Auctioneers

SAT JAN 28 - 9 30 A M Public Sale of Parts for Model T and Model A Ford, 52 Years in Business, Sold Garage and Home, Everything Must Be Sold Located in the village of Shellsville on old Rt 22, 12 miles East of Harrisburg, 6 miles North of Hershey Russell T Shertzer, Owner Gerberich and Long, Auctioneers

SAT JAN 28 - 10 A M Public Sale of Farm Equipment, Antiques and Household Goods Located between Lancaster and Marietta Pike, Rt 23, 2 miles West of Silver Springs, Pa near Farmdale School Sale by Paul Dougherty H Shaffner

and C H Wolgemuth, Auctioneers

SAT JAN 28 12 Noon Forers' Complete Herd Dispersal Located 2 miles East of Liberty, Pa, Tioga Co, 14 miles West of Canton, Pa on Rt 414, 30 miles North of Williamsport, Pa Miles Jr and Janet Forers, Owners D O Rockwell & Assoc, Troy, Pa

## FEBRUARY

WED FEB 1 - 9 30 A M Consignment Sale by David H Good located 1/2 mile North of Route 23 on North Maple Ave in Leola, Lancaster Co, Pa F Snyder, R Martin, C Wolgemuth, J Fry, L Horst, Auctioneers

THURS. FEB 2 - 7 P M Public Auction of English and American Antique Furniture and Paintings Located at the Brandywine Hilton Inn, I-95 & Naamans Rd, Wilmington, De Rudnick & Matas, Auctioneers

SAT FEB 4 - 11 A M Harlan M Martin - Hackman Rd, RD 1, Ephrata, Pa Horning Farm Agency, Inc Elton & Alvin Horning, Auct

SAT FEB 4 - 1 P.M Sale of Bred and Open Gilts and Boars Sale by PA Yorkshire Club Abe Diffenbach, Auctioneer

SAT FEB 4 - Public Sale of Valuable 4 7 Acre Horse or Truck farm Located along Wallops Hill Rd, leading from Stevens to Blue Lake next to Pa Turnpike, West Cocalico Twp, Lancaster Co, Pa Sale by David and Audrey Wyble H H Leid Auction Service

SAT FEB 4 - 10 A M Public Sale of Modern Farm Machinery and Household Goods Located along old Rt 22, 1 mile East of Sharletsville, 5 1/2 miles West of Hamburg, Upper Bern Twp, Berks Co, Pa Sale for Roland R Tothoro John D & George D Frey, Auctioneers

SAT FEB 4 - 10 A M Rescheduled Public Sale of Real Estate, Antiques, Household Goods, Jewelry and Watches Located at 619 Hamilton St, Lancaster, Pa (1 block West of New Holland Ave, between Franklin & Reservoir Streets) Sale by John J Kirchner Howard Shaub and Roy C Probst, Auctioneers

THURS FEB 9 - Public Sale of Farm Equipment Located West end of Long Lane Rd, 2 miles off Rt 625, midway between Terre Hill and Matinsdale, app 1 mile East of Martindale in Lancaster Co, Pa Sale by Ivan M Hurst

## FARMERSVILLE AUCTION

TUESDAY, JANUARY 24, 1978

6:00 P.M.

In Farmersville, 3 mi. East of Brownstown, Lancaster Co., PA.

GENERAL HOUSEHOLD GOODS SALE.

We sell on commission.

Call: JOHN J. RUTT  
717-354-5095

## PUBLIC SALE

OF FARM MACHINERY  
SAT., FEB. 4, 1978

AT 11:00 A.M.

Located near Ephrata. At Messick Chevrolet travel North on Schoneck Road off Rt. 272, turn left on Hackman Rd., first farm on right.

INTERNATIONAL  
574 UTILITY DIESEL TRACTOR  
less than 700 hr. Ex. cond.

INTERNATIONAL  
AUTOMATIC 3-16 RESET PLOW  
used one season, like new

990 International haybind, 7 ft. cut, New Idea 201 manure spreader, 8 ton 16 ft. flat wagon, John Deere 246-247 corn planter, with insecticide hopper, 2 row 3 pt. hitch Ford cultivator, 9 ft. Brillion cultipacker, 10 ft. John Deere K.B.A. disc harrow, 12 ft. steel field drag, No. 214 New Idea 3 beater manure spreader, Stauffer 2 row transplanter - 600 gal. water trailer, 275 gal. fuel tank, Aluminum Wikom 16 ft. elevator, Cyclone 12 volt clover seeder.

SHOP TOOLS: 225 amp. Lincoln welder, stationary air compressor, McCullough chain saw, platform scales, mineral feeder, (like new), 40 ft. extension ladder, Hudson hand pump sprayer, International electric fence - like new, air bumper jack, 2 - 750 16" 8 ply tires, electric motors, forks and shovels, emery wheel, hog trough, tobacco bale box, fan with motor, handy man jack, cattle racks for Dodge pick up, used lumber, 26" girls bike, fire place wood, tobacco shears, spears, pulleys, bolts, nuts and many other tools and accessories not listed.

AUCTIONEER'S NOTE: Equipment is in excellent condition and not many small items so come early. Large Equipment will be sold soon after 11 A.M.

Terms By  
HARLEN M. MARTIN

Auctioneers  
Elton & Alvin Horning  
Horning Farm Agency, Inc.  
Main Street, Morgantown, Pa. 19543  
215-286-5183

Merle Eberly Apprentice  
LUNCH AVAILABLE

LeRoy S Horst and Paul W Horst, Auctioneers

Ralph W Zettlemoyer Auction Co

THURS FEB 9 - Public Sale of Household Goods, Farm Equipment & Livestock Located 1 1/2 mi N of Rt 23 in Leola on Quarryville Rd Terms by Joe S Glick Auctioneers Robert E Martin - 717-656-7770 & Frank L Steller - 717 656-8195

FRI FEB 10 - 1 P M 73 Acre farm, 40' x 90' Barn, 20' x 60' Star silo, Large Brick and Frame House - Zoned 20,000 Sq Ft Located along Esbenshade Rd, 1 mile N of 283 RD #2 Manheim, Rapho Twp, Lanc Co Terms by John A Hackman, Willard Hackman, D Elaine Grace Atty Jay David Young Horning Farm Agency, Inc Main Street, Morgantown Elton & Alvin Horning, Auctioneers 215-286-5183

FRI FEB 10 - Paul F Detwiler Farm Equipment Dispersal Located 4 miles West of Newville, Cumberland Co., Pa along Ridge Rd, off Rt 64 Ralph W Horst, Auctioneer

SAT FEB 10 - Berks-Lehigh Pork Producers Assoc, Bred & Open Gilts and Boars, All Breeds Kutztown Fair Grounds Sale conducted by

SAT FEB 11 - 2 P.M. Public Sale of Valuable Real Estate located in Hatville 1 1/2 mi E of Intercourse between Rt 340 & 772, Leacock Twp, Lanc Co, Pa Two acres with 2 1/2 story frame dwelling & 40x200 two story block & frame broiler house Terms by Annie K & Lloyd J Stoltzfus Auctioneers Robert E Martin 717-656-7770 & Frank L Steller - 717 656 8195 Attorney Wentz & Wentz

SAT FEB 11 - Public Sale of Farm Equipment near Greencastle, Pa for Paul and Janet Hock Ralph Horst and John Downin, Auctioneers

SAT FEB 11 - Rectorbrook Farms Complete Dispersal of 72 Head Registered Holsteins, at Penn Yan, NY Alan, Esther, Greg, Jeanne Rector, Owners Sale Mgrs D O Rockwell & Assoc, Troy, Pa

SAT FEB 11 - 1 P.M. Berks-Lehigh Co Pork Producers Spring Sale Located at the Kutztown Fair Grounds, Kutztown, Pa Ralph W Zettlemoyer, Auctioneer.

## PUBLIC SALE

ESTATE OF CHARLES HARPER  
FRI., JAN. 27, 1978

At 12:00 Noon

Located in Huntingdon Co., 3 miles South of Mt. Union, Pa., along Rt. 522.

64 HEAD HOLSTEINS (33 Registered)

40 milk cows and 24 heifers; several bred heifers, others all ages. A good number of cows just fresh or springing; balance in various stages with some good DHIA records and several home raised families.

This ia a good bred herd with some outstanding young cows with good udders and sired by Elevation, Kingpin, Jet Stream, First Million, Woodhouse Answer and other good unit sires.

Sale under cover - 30 day health test

Catalogs - Lunch At Sale

CHARLES HARPER EST.

Irma Collins,  
Administratrix  
Mt. Union, Pa.

Auctioneers  
Mark Glick &  
Dale Gibboney

## PUBLIC SALE

of  
97 Acre Farm  
SAT., FEBRUARY 11, 1978

at 1 P.M.

Located along Rt. 568. First farm East of Jct. New 222 & 568 Brecknock Twp., Berks Co., Pa.

GROUND: 97 acres, approx. 65 acres tillable, remainder in meadowland, with stream, small amount woodland.

TERRAIN: Most rolling, some gentle slope.

BARN: Frame with cement block addition, 32 stanchions, also horse stable, and calf pens. 300 gal. bulk tank, 12'x45' stave silo, 40'x64' metal implement shed with workshop, 1100 bushel steel corn crib.

ZONING: R-2 Governor Mifflin School District.

COMMENTS: The ground to this farm is generally rolling with some gentle slope, meadowland with nice stream. The condition of buildings is fair to good, also a good location with easy access to new Rt 222.

INSPECTION: Anytime by appointment. Call Horning Farm Agency, Inc. 215-286-5183. Terms 10% down day of sale, settlement on or before April 1, 1978.

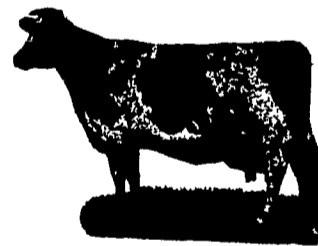
Terms by

Edwin B. Weaver  
Charles V. Snyder, Jr.

Attorney

Horning Farm Agency, Inc.  
Main Street  
Morgantown, Pa.  
Elton & Alvin Horning, Auctioneers  
215-286-5183

SHORT NOTICE  
REGISTERED AND  
HIGH GRADE  
HOLSTEIN  
AUCTION



FRIDAY, JANUARY 27, 1978

11:30 A.M.

Blizzard Date -

Monday, January 30, 1978 - 11:30 A.M.  
Sale held for Everett Wilson, 1 mile north of Chester, NJ on Pleasant Hill Rd., off Rt. 206.

Selling due to labor.  
137 HOLSTEINS - DHIA TESTED - SIREPOWER BRED

90 cows, 30 springers, 18 fresh recently, balance in various stages, 10 big springing heifers, 31 head 6-12 mo. old heifers, 5 started calves, 1 registered bull, 25 head registered. Sires rep: Elevation, Lucky, Mary King, Vernon and others. DHIA tested with 16,428M 594F, many records to 20,000 lbs. and over. A real top young dairy with type, production and strong sound udders.

TB and blood tested for immediate interstate shipment. Pregnancy examined. Treated for shipping fever. Plan now to attend this complete dispersal.

CROPS

300 ton corn silage, 1500 bales straw, some alfalfa hay.

Owner:  
EVERETT WILSON

Sales Manager and Auctioneer  
Col. Fred R. Daniel Auctioneers, Inc.  
Neshanic Sta., NJ  
201-369-4784

Owner & Auctioneer  
Not Responsible For Accidents.