

Know Where the Activities Will Be?
Read the Farm Women Calendar.

Public Sales Register

PUBLIC SALE

OF VALUABLE REAL ESTATE
AND FARM MACHINERY

WEDNESDAY, MARCH 1, 1978

Located in Cumberland County, Pa., 2 miles east of Newville along Route 641.

Farm has 108 Acres, more or less, of level limestone soil producing good, all tillable except 10 acres of timber, 50 x 80 foot barn, 20 stanchions, drinking cups, good well, milk house, silo, machine sheds, corn cribs, road frontage on three sides.

Terms: 10% down, balance on April 1, 1978. Owner reserves the right to reject any and all bids. Other terms at time of sale.

Machinery sale starts at 10:00 a.m.

Real Estate at 1:30 p.m.

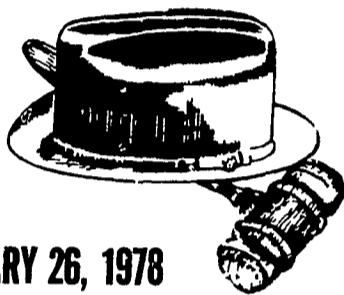
Machinery list will be added later.

Owner,
ARTHUR W. RIFE
Ph. 717-776-3645

Paul Eppley, Auctioneer

HAT & GAVEL AUCTION CO.

1 Mile North of Litzitz on
Route 501



THURSDAY, JANUARY 26, 1978

5:30 P.M.

HOUSEHOLD, COLLECTIBLES

WE SPECIALIZE IN PUBLIC AUCTIONS,
ESTATES AND ANTIQUES

WILBUR H. HOSLER

306 Owl Hill Road, Litzitz

Harold K. Galebach, Partner

HAT & GAVEL AUCTION CO. SELLS
ON COMMISSION — CALL 626-0254

Receiving Hours: Monday, Noon to 9 P.M.;
Wednesday, 9 A.M. to 5 P.M.; Tuesday, Pickup Day.

Positively No More Garage Sale Leftovers
Will Be Received.

PUBLIC SALE

SAT., JAN. 28, 1978

At 9:30 A.M.

In the Village of Shellsville on old Rt. 22, 12 miles east of Harrisburg, 6 miles north of Hershey. Antique automobile parts and garage equipment.

Parts for model T and model A Ford, 52 years in business, sold garage and home, everything must be sold.

Lg. lathe 6 to 6 to center and 18 inch swing metal or wood made by Sydney Co., 6 ft. lathe, K.R.W. Ford V8 and tractor sleeve pullers, Hulto grinder, reamers all sizes, tools for inspection, 4 ton floor jack, 6 oil tanks with pumps, 100 gal. coal oil tank and pump, front end manbee scientific steering correction, electric motors, lot of generators, Sunner L, B, M, grinders, new truck chains, other chains, lg. anvil with cutter, Van Norman No. 965 boring bar, metal bins 8 ft. high-8 ft. wide, new spark plugs, M & M for model T, gaskets, metal oil cans with spouts all sizes, 1930 Chevy. radiator, all kind garage tools, pipe cutter, Weaver split rim tire changer, wind shield parts, mufflers, small welder, wind shields, tail lights, car seats, hinges, saws, new Holland No. 6 grinder with plates, adv. signs with 4 ft. thermometers and other adv. signs, wooden boxes with adv., wooden barrels, lard cans, buggy seats, New Holland wood saw with circular saw, milk cans, ladders, garden tools, 2 horse scoop, tree trimmer, meat saws. Wisconsin 4 cylinder gas engine, wooden rake, old antique lightning rods with glass balls, 384 paleings for fence 4 ft. high, 20 window sash, benches, tables, good carpenter bench with wooden vice, wood box, axes, thousands of other small items used in a garage.

Owner
RUSSELL T. SHERTZER

Gerberich & Long - Auct. 838-1825

Refreshments by Shells Church

Cash or travelers checks only; checks if approved by auctioneer.

JANUARY

SAT JAN 21 - Harold Culbertson Farm Equipment Dispersal, near Chambersburg, Pa Ralph W Horst, Auctioneer

SAT JAN 21 - 10 A M Antique Sale at the Hat & Gavel Auction Co located one mile North of Litzitz along Rt 501 Auctioneer Wilbur H Hosler

SAT JAN 21 - 1 P M Special Horse Sale at the Danville Livestock market, located Old Rt 11, Danville, Pa Owner Bob Biel

Stoltzfuz Steve Petersheim, Auctioneer

SAT JAN 21 - 10 30 A M Public Sale of Farm Equipment, Household Goods, etc Located about 2 miles East of Chambersburg, Pa, turn East off Rt 11 at Mennonite Church at the North end of Chambersburg, go to Scotland Rd Market, follow signs, or leave Rt 81 at Scotland exit No 8, take Chambersburg Rd West out of Scotland, follow signs 3 miles to sale Harold L and Lucille M Culbertson, Owners Ralph Horst, Auctioneer

SAT JAN 21 - 1 P M Mills Complete Herd Dispersal of Farm and Equipment Located 3 1/2 miles Northeast of Towanda, Pa, Bradford Co on Lanning Creek Rd, 6 miles Southeast of Ulster, Pa, 1/2 mile from Black's Lake Silas and Esther Mills, Owners D O Rockwell and Assoc

TUES JAN 24 - 1 30 P M Public Sale of 90 Acre Farm in Lancaster Co Located 3 miles East of Intercourse, along Rt 340 Terms by HS Lapp Steve Petersheim, Auctioneer

TUES JAN 24 - 6 P M Farmersville Auction In Farmersville, 3 mi East of Brownstown, Lancaster Co, Pa John J Rutt, Auct

WED JAN 25 - 12 P M Public Sale of Horses and Mules Horses hrtched 9 A M Located at Paul Z Martin Sale Stables, Rt 340, Intercourse, Pa

WED JAN 25 - 11 A M Dispersal Sale of Farm Machinery Located 5 miles South of Chambersburg, Franklin Co, Pa along Guilford Springs Rd 2 miles off and South of Rt 11 or 3 miles off Rt 316 Turn North in New Franklin, watch for sale arrows Terms by David R Ocker Arthur Rife, Auctioneer

Carlin named sales manager

VINELAND, N.J. -- William G. Carlin, known for his leadership in Pennsylvania poultry organizations, has been named national Leghorn sales manager for Hubbard Farms, it was announced by Lowell R. Blass, Hubbard's director of sales.

Carlin has long been active in the Pennsylvania Poultry Federation, and served as its president of Producers Cooperative Exchange, an egg marketing cooperative in Coatesville, Pa., and a former flock supervisor in the contract program of the Pennsylvania Farm Bureau Cooperative.

Carlin will make the



William Carlin

Hubbard Farms plant at Lancaster, his headquarters in the immediate future.

48 REGISTERED GUERNSEYS 48

THURSDAY, JAN. 26, 1978

12:30 P.M.

At the Ass'n. Sales Pavilion, 6 miles east of Lancaster on Rt. 30.

47 COWS and BRED HEIFERS - All due about sale time.

1 BULL - born: 10/30/76 by a son of "Darimost" and out of "Lerson Lawn Jasons Lassie" (E/92.5-74-GS) #21300-#946-4-5 DHIR-305 2x. (Index +842M +31F 42% Rpt. (5/77).

Bred Heifers are sired by and bred to popular bulls.

Your fall fresheners are starting to slacken off now, and your base is made. Keep your tank full with the many selections in this sale.

PUBLIC SALE

of
Modern Farm Machinery & Household
on

SATURDAY, FEB. 4, 1978

Located along old Rt. 22, 1 mi. East of Shartlesville, 5 1/2 mi. West of Hamburg, Upper Bern Twp., Berks Co.

IH 574 diesel tractor w/Quick-Tach loader (400 hrs.), Oliver 1850 diesel w/WFE - good rubber, Oliver 1655 gas tractor - good rubber, MH Super 26 self-prop. combine w/grain head, NH 276 baler w/hillside thrower (1 yr.), Gehl 95 grinder mixer, Gehl 600 forage harvester w/2 row corn head & hay picker, IH 16 hole grain drill (1 yr.), NI auger feed silo blower (1 yr.), NH silo blower, Gehl 920 forage wagon (1 yr.), IH forage wagon, Oliver 4 row corn planter, NH 469 haybine, Viscom 3 pt. 900 lb. broadcast spreader, pull type weed sprayer w/300 gal. fiberglass tank, NI 214 flail w/end gate manure spreader, IH 1 PR corn picker, Oliver 546 4x16 semi-mtd. cushion trip plow, 225 bu. gravity wagon, Brillion 12' transport harrow, Brillion 12' & 8' single roll cultipackers, IH 7' grass mower, NI 31' elevator, Little Giant cult., 30' gram auger, 16'x6' auger, Gandy forage preservative applicator, MH side rake, 3 throw bale wagons - 1 w/hoist, double cyl. truck lift hoist w/controls, hyd. cyls., feed carts, air compressor, lot of oil & barrel pumps, platform scale, elec. fencers, log chains, forks, shovels, nuts, bolts and many more items used on a farm.

1965 Chev. truck w/dump, 26,000 lbs.

Reed baby carriage, reed rocker, chairs, sofas, beds, dressers, other items.

REASON FOR SELLING: FARM SOLD. MOST MACHINERY BOUGHT NEW, USED ONLY 1 OR 2 YEARS. TERMS: CASH.

SOLD FOR ROLAND R. TOTHERO SALE AT 10 A.M. John D. & George D. Frey, Auct.

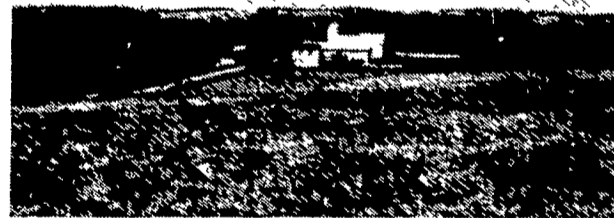
Refreshments on premises.

PUBLIC SALE

REAL ESTATE
55 ACRE FARM

TUESDAY, FEBRUARY 14, 1978

At 2:00 P.M.



Located 12 miles South of Lancaster off 272, turn West go 6 miles on Rawlinsville Ave. to Martic Heights Rd. to Mount Nebo. Turn South on Douts Hill Rd. Second Farm.

INSPECTION OF PROPERTY FEB. 4th & 11th.

THE HOUSE - A 2 story frame house 8 rooms & bath; slate roof, asbestos siding, new concrete porch, storm windows & doors, remodeled kitchen & dining room, living room, family room, laundry, enclosed porch, 4 bedrooms, hot air heat, new electric water heater, nice lawn & fruit trees. Extra well on premises.

THE BARN - Concrete block building, three new horse box stalls, fixed for steers or pigs, concrete stave silo, drive in corn barn, pig pen, 2 tobacco sheds, garage with tin roofs.

THE LAND - 55 acres of highly productive soil of which 45 to 50 acres are in crops.

TERMS - 10% down day of sale balance on settlement on or before April 1, 1978.

Auctioneer's Note - To those of you who are interested in buying a good farm have everything to your advantage in this farm. The location is the best, the improvements are good, the soil is of the very best.

Sale by:

CHARLES L. & ANNA N. FYE

Attorney George C. Xakellis

Auctioneers: Lloyd H. Kreider

& Randel V. Kline

Not responsible for accidents day of sale.