

# Top speakers, pertinent topics slated for Pa. wine conference

UNIVERSITY PARK — Dr. Helmut Becker of Geisenheim, West Germany, founder of the German Wine Academy, will be among the featured speakers at the Tenth Pennsylvania Wine Conference to be held January 31 and February 1 at the Hershey Convention Center, Hershey.

Dr. Becker is also leader of the Grape Breeding and Grape Propagation Institute at the Geisenheim Agricultural, Horticultural, Grape, and Wine Institute. He will speak on "Rootstocks for Vinifera Grapes" and "Sparkling Wine Production for Small Wineries."

A champagne breakfast will be featured Feb. 1 as well as an informal tasting of Pennsylvania wines and cheeses that evening prior to the annual banquet.

The Wine Conference will take place simultaneously with annual meetings of the State Horticultural Association of Pennsylvania and the Pennsylvania Vegetable Growers Association. Over 100 exhibitors will feature equipment for grape growing, wine making, and food processing.

An assessment of grape plant injury from the Winter of 1977 will be made by Dr. Thomas Zabadal of Finger Lakes, New York, grape specialist, and Dr. Carl Haeseler, pomologist at Penn State's Erie County Field Research Laboratory. In addition, Dr. Haeseler will compare the growing of vinifera of European-type grapes with non-vinifera grapes in Pennsylvania.

The conference will deal with loss of grapes due to the downy mildew disease, a serious problem in 1977. Speaking on the nature of downy mildew of grapes will be Dr. Donald H. Peterson of Penn State.

Federal quality standards for producing grapes for the processing industry will be presented by Clyde Miller, chief of the fruit and vegetable division of the

Pennsylvania Department of Agriculture. This topic will be complemented by a discussion of one processor's approach to determining field maturity and acceptance of grapes. Speaking will be Gordon DeGolier, chief of the field division for National Grape Cooperative, Westfield, N.Y.

J. Richard Nissley of Landisville, president of the Pennsylvania Wine Association, will discuss the role of this newly-formed organization.

Sponsoring the Wine Conference at Hershey are the Cooperative Extension Service and the Agricultural Experiment Station of the College of Agriculture at Penn State, the Penn-

sylvania Grape Council, the Pennsylvania Wine Association, and the Pennsylvania Department of Agriculture.

Topics of interest to commercial wine makers will include one entitled "Inducing Malo-Lactic Fermentation by Inoculation," by Dr. Robert Beelman, researcher in food science at Penn State. "The Effect of Skin-Contact Time on White Wine Quality" will

be presented by Susan Freas, graduate student in food science at Penn State.

Equipment sources for small wineries will be discussed by Douglas F. Moorhead of Presque Isle Wine Cellars, North East, Pa. Mrs. H. Lee Stauffer and Hudson Cattell, editors of "Pennsylvania Grape and Wine News," will access the marketing practices of Pennsylvania's limited wineries.

## Md. tobacco auction set for April - June

CHELTENHAM — The 1978 Maryland tobacco auction season will begin April 11 and run for eight weeks until June 1, according to the Maryland State Tobacco Authority.

Auction sales at the eight warehouses in Southern Maryland will be held four days per week, Monday through Thursday. The weekly quota of tobacco to be sold will be four million pounds.

Advance indications are that the 1977 Maryland tobacco crop is about 30 million pounds and the quality of the leaf is regarded as "very good" with much highly-prized thin crop grades on hand.

Tobacco growers from Anne Arundel, Prince Georges, Calvert, St. Marys and Charles, also are well along in their "stripping", something they have not been able to report for the past several seasons due to extremely dry conditions.

On another note, Maryland Secretary of Agriculture Young D. Hance reported that slightly over \$17 million worth of Maryland Type-32 tobacco was exported in the past marketing year, up substantially from \$11.5 million exported the year before.

"Tobacco has been a vital export dollar earner for Maryland since colonial times," Hance said, "and today it is encouraging to see tobacco playing a strong role in earning foreign exchange credits for a nation which needs agricultural exports to help pay for imported petroleum."

### It's The Cape

Did you know that bulls can't actually see red? It's the movement of the toreador's cape that attracts the bull. The color red is for the benefit of the spectator. In fact, most animals can't distinguish colors.

## FISHER SPRAY PAINTERS

(Henry K. Fisher Inc.)

## SANDBLASTING and SPRAY PAINTING

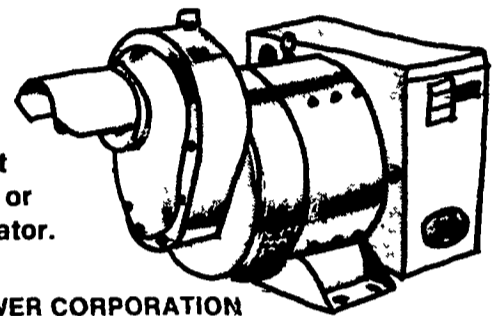
INTERIOR and EXTERIOR Aerial Ladder Equipment

Office & Shop - 667 Hartman Station Rd.  
Residence - 2322 Old Philadelphia Pike  
Lancaster, Penna.

For FREE Estimates Call 717-393-6530

## Tractor Driven Alternators!

Protect your farm against costly power failure. Buy or lease a Winpower Alternator.



WINPOWER CORPORATION  
NEWTON, IOWA 50208

Write today for more information

### MARVIN HORST

Lebanon, Pa.  
717-272-0871

### AL MAURER

Cambria, Pa.  
717-864-3135

### BOB SWANSON

Kennett Square, Pa.  
215-444-5610

## NA-CHURS LIQUID FERTILIZER WILL WORK FOR YOU

### CHECK THESE FEATURES

- + Na-Churs product - contains N-P-K, sulphur, plus trace elements and has a pH of 6.8 to 7.2.
  - + Trace elements can be mixed according to soil recommendations.
  - + Neutral plant food and trace elements can all be placed in Root zone at planting time.
  - + Ease of handling - no bags to lift.
  - + Our program with Na-Churs liquid fertilizer will increase your profits.
- A customer of Na-Churs liquid fertilizer will receive at no additional cost a FREE SOIL TEST for

pH	Pounds Per Acre					NO <sub>3</sub>	
	Calcium	Phos	Pot	Mg	SO <sub>4</sub>		
	Parts Per Million					Water Holding Cap	
	AL	Mn	Fe	Cu	Zn		B

Contact your local representative or call one of the following managers:

### MYRON O. LeVAN

RD2  
Watsonstown, PA 17777  
PHONE  
717-742-8064

### ROY L. SHERTZER

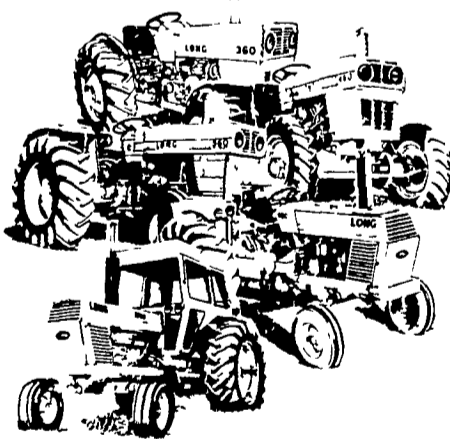
Route 6, Long Lane Road  
Lancaster, PA 17603  
PHONE  
717/872-7342

### ORIE KINDY

Box 180  
Riumsteadville, PA 18949  
PHONE  
215-766-8077

SALES REPRESENTATIVES  
NEEDED

# PRICE CUT LONG TRACTORS



For a limited time, we are offering selected models of LONG Tractors at unheard-of low prices

You get more horsepower and more weight per dollar than any other tractor we know of. LONG offers six tractor models from 35 to 120 H P. Four wheel drive is also available.

Stop By Today For A Deal You Won't Believe.

**SAVE NOW!**

**SEE DEALERS LISTED AT SIDE.**

### I. G. AG SALES

Silverdale, PA  
215-257-5136

### LEISERS, INC.

3608 Nazareth Pike  
Bethlehem, PA  
215-691-3070

### MELROSE FARM SUPPLY

Rt. 16 West,  
Greencastle, PA  
717-597-3138

### AGROPHILOS, INC.

RD1, Millerstown, PA  
717-444-3232

### NEVIN N. MEYER & SONS, INC.

Chester Springs, PA  
215-827-7481

### COLUMBIA EQUIPMENT CO.

Bloomsburg, PA  
717-784-7456

### NORMAN D. CLARK & SON

Honey Grove, PA  
717-734-3682

### MAIDENCREEK FARM SUPPLY

Blandon, PA  
215-926-3851

### CLAPPER FARM EQUIP.

RD1, Alexandria, PA  
814-669-9015

### WENGER'S INC.

S Race St.  
Myerstown, PA  
717-866-2138



**COME AND SEE THE OTHER BLUE LINE!**