

# Purebred, grade draft horse winners named

By KENDACE BORRY  
**HARRISBURG** - Several breeds of draft horses were shown throughout the week of the Pa. Farm Show. Owners of the heavy breeds of horses competed in Belgian, Clydesdale, Percheron, and grade horse classes.

Charles B. Orndorff and Son, Corbly, captured nine championships in Belgian horse judging competition at the show. For many years, Orndorff entries have won the majority of championships in Farm Show Belgian competition.

In stallion classes, Orndorff showed the grand champion, reserve grand champion, senior champion, and junior champion. In mare classes, he and his son showed the grand champion, reserve grand champion, senior champion, and junior champion.

H. A. Goal, of Indiana, exhibited the reserve senior champion stallion, and Herbert Frantz, of Waynesboro, Franklin County, showed the reserve junior champion stallion.

Mr. and Mrs. H. Messerschmidt and Son, of Myerstown R2, Lebanon County, exhibited the reserve senior champion mare.

Floyd R. Johnston, of Monroeville, Allegheny County, captured six championships in Clydesdale horse judging competition.

His mares won five championships: grand, reserve grand, senior champion, and junior champion. One of his stallions was declared reserve junior champion.

Derroll Rhoderick, of

Gettysburg R5, Adams County, exhibited the reserve junior champion mare, reserve grand champion stallion, and junior champion.

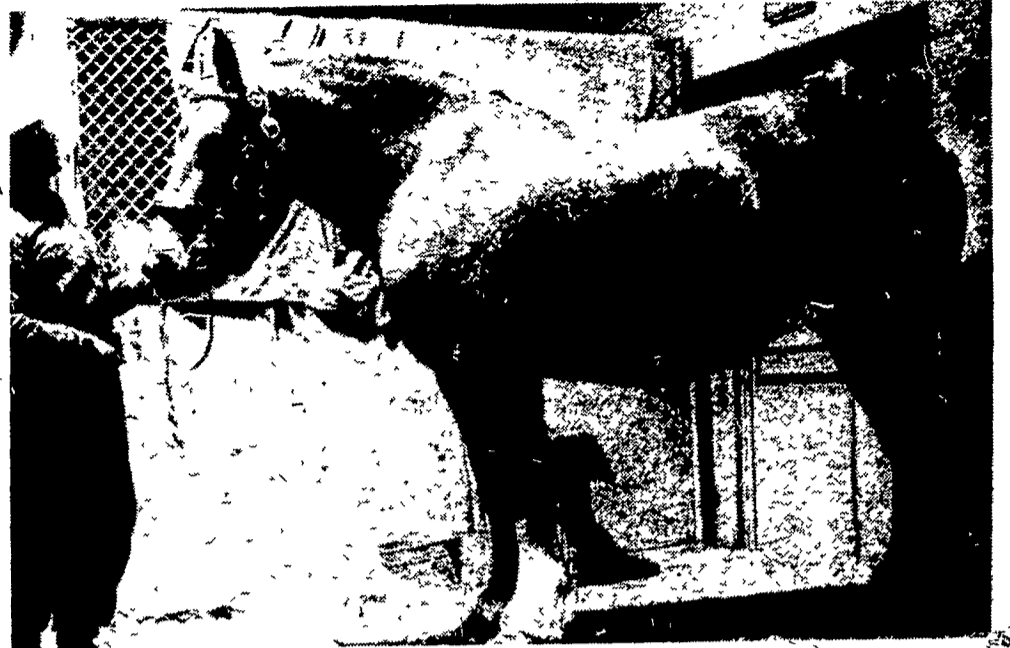
Edward Johnston, of Monroeville, showed the grand champion and senior champion stallion.

Crawford and Centre County horse exhibitors captured the majority of championships in Percheron horse judging competition.

Abraham W. Allebach, of Spring Mills R2, exhibited the grand champion stallion, grand champion mare, junior champion stallion, junior champion mare, and reserve junior champion mare.

Glenn and Nancy Cooper, of Adamsville, exhibited the reserve grand champion mare, reserve grand champion stallion, senior champion mare, reserve junior champion mare, senior champion stallion, and reserve junior champion stallion.

Harry J. Wright, Summerhill R1, Cambria County,



Edgar Messerschmidt, Myerstown, showed "Celeste Promoter" a 7 yr. old Belgian mare to the reserve senior championship.

showed the reserve senior champion stallion.

In the grade horse classes, the first place winners were the Derroll Rhoderick family, Gettysburg R5. The Rhodericks' entrees placed first in the grade gelding or

mare single class as well as the grade mated team class. In the single horse division, the Rhodericks had the top four placings in the class.

In the one hitched horse class, first place winner was Elvin Lapp, Kinzers R1. In

the pair hitched horses class, Marjorie Rhoderick captured top prize. H. Messerschmidt and family, Myerstown R2, placed third, Charles Lindsay, Green-castle R3, placed fourth, and Elmer Lapp placed seventh.

## Martin receives Keystone Degree

**HARRISBURG** - Michael J. Martin, the son of Mr. and Mrs. Wilmer E. Martin, Honey Brook R2, received his Keystone Farmer degree on Wednesday at the mid-Winter convention of the Future Farmers of America.

In his senior year at Pequea Valley High, he is currently serving as sentinel of Pequea Valley FFA and vice-president of Lancaster County FFA. He is a member of the National Honor Society and has been in the school chorus and drama presentations.

Martin's projects include swine breeding and dairy production. In his dairy operation, he has a Holstein cow and an Ayrshire heifer. In state dairy judging, he was the recipient of gold and silver emblems.

Martin is a member of the Weaverland Mennonite Church and youth group. He is also a bass singer with the



Michael J. Martin

Voices of Victory Mixed Chorus.

His future plans include a job with Yoder's Meats, East Earl, and possible partnership with his father on their 104 acre dairy farm.

## Manure feeding to be taught

**NEW HOLLAND** - The Garden Spot Adult Farmer Association will sponsor an educational meeting entitled "Recycling Manure" on Jan. 17, at 7:30 p.m. in the agricultural classroom of the Garden Spot High School, Route 23, New Holland. The featured

speaker will be Dr. C. C. Calvert, research scientist with USDA's Research Center, Beltsville, Maryland. Dr. Calvert has been conducting extensive research ensiling poultry manure and feeding it to cattle.

### LOWER ROUGHAGE COST IN 1978

Current market prices for hay have been in excess of \$100.00 per ton. Paying these prices for roughage takes a serious cut into profits for dairymen. Higher cost of hay equipment and risky weather conditions make hay a necessary but expensive product. Take a good look at hay equivalent and corn silage ratio's. More corn silage in the dairy feed program will prove profitable due to high ton per acre yields. Even cost per ton if bought at harvest time is favorable. Less loss due to harvest and weather is definitely in favor of corn silage.

Fall market price of ear corn at harvest time did not show a profit - at best - break even. Storing the corn crop as high moisture ground ear corn provides excellent feed for beef or dairy. This single harvest operation has many advantages. Feed ready to use 365 days per year - eliminates weekly grinding costs - stop losses due to rodents - a more palatable feed - automated for barn or bunk feeding. Batch mixing of corn silage - haylage and high moisture ear corn with a balanced protein program is showing increases in milk and beef production. Major feed companies are strongly recommending pre-batch mixing of silage for even greater results

For more details call Ken Groff or Larry Hiestand at 717-299-3721. Adv.

**HOFFMAN**  
**Hay Formulas**  
 For dependable crops  
 of high quality forage

Hoffman formulas are the modern, practical approach to getting bigger crops of high-quality forage. They combine and blend leading varieties of grasses and legumes to give you broad spectrum performance. Help you still make a good crop when adverse weather strikes . . . when soils or climate conditions are less than the best. Or when disease is a problem. And their built-in high yield potential really blossoms under good conditions.

Every one of the 14 Hoffman formulas is designed to produce top results for specific uses under northeastern conditions. See your Hoffman Seed Man, or write for a copy of our new catalog.

- Updated and improved every year.
- Top grade, high-germination, clean, tested seed.
- Matched maturity varieties.
- Pre-inoculated, ready to sow.
- Crop quality improved by proper grass legume balance.
- Special formulas for hay, pasture, silage and haylage.

ASSOCIATE PRODUCER  
 AND DISTRIBUTOR OF  
**FUNK'S-G  
 HYBRIDS**



## HOFFMAN SEEDS, INC.

LANDISVILLE, PENNSYLVANIA 17538  
 Pennsylvania's Number One Farm Seed Specialist