

Livestock market and auction news

(Continued from Page 9)

FEEDER STEERS: Choice 400-500 lb. 45.50-47.75; 500-600 lb. 43.25-44.50, two part loads 502-570 lb. 45.90-46.40; 600-700 lb. 42.00-44.00; 700-800 lb. 40.50-43.00; few 800-950 lb. 41.00-42.75; mixed Good and Choice 400-500 lb. 43.00-45.75; few 500-910 lb. 40.00-41.00; few Good 500-700 lb. 36.75-40.00; small lot Good 1038 lb. Holstein heifers at 35.90.

FEEDER HEIFERS: Choice 300-500 lb. 37.25-39.00; 500-600 lb. 36.50-38.00; mixed Good and Choice 300-650 lb. 35.25-36.75; few Good 350-730 lb. 34.25-35.25.

FOR THE WEEK: Compared to late last week feeder steers closed steady to \$1.00 lower; feeder heifers closed steady; cows closed .50-\$1.00 higher, late sales Utility and Commercial 2-3 25.00-29.75; Cutter 1-3 23.25-25.50; bulls closed steady to firm, instance .50 higher, week sales consisted of Yield Grade 1-2 1000-1800 lb. 31.50-36.50; salable receipts near 12,300 head, compared to 15,001 last week and 6731 head the comparable week a year ago. Cows and bulls numbered near 1900 head and comprised near 15% of cattle receipts; feeders near 85% of the total.

St. Louis Cattle

National Stockyards
January 12, 1978

Receipts this week 7,500;
Week ago 6,700; Year ago 4,550.

As compared to the previous weeks close, slaughter steers and heifers 50-1.00 higher. Cows 1.00-1.50 higher. Bulls firm to 1.00 higher. Supply mainly choice and mixed choice and prime 2-4 1050-1250 lb. steers, around 5 percent heifers and 15 percent cows.

SLAUGHTER STEEP: Mixed Choice and Prime 2-4 1050-1250 lbs. 43.00-44.50, mostly 43.50-44.00. Choice 2-4 975-1275 lbs. 41.50-43.75, closing sales 42.00-43.75. Mixed Good and Choice 2-3 1100-1275 lb. Holsteins 37.00-37.50. Good 2-3 900-1200 lb. 36.50-40.50. Standard to Good

2-3 1025-1250 lb. Holsteins 33.50-37.00.

SLAUGHTER HEIFERS: Scattered lots High-Choice and Prime 2-4 950-1025 lbs. 42.00-42.50. Mixed Choice and Prime 2-4 875-1025 lbs. 41.00-42.00, closing 41.50-42.00. Choice 2-4 800-1050 lbs. 39.50-41.50, closing 40.00-41.50. Mixed Good and Choice 2-3 700-975 lbs. 38.00-40.00. Good 2-3 700-975 lbs. 34.00-38.00.

COWS: Utility and Commercial 2-4 24.50-28.50. Boning Utility 1-2 27.50-29.50, closing sales mostly 29.00, few 29.50. Cutter 2-3 23.50-27.50. Canner and Low Cutter 1-2 20.00-24.50.

BULLS: Yield Grade 1-2 1000-1700 lbs. 28.00-33.00. Yield Grade 1 1500-1950 lbs. 33.00-34.00.

FEEDERS: Including around 2400 at Thursday's auction. Feeder Steers uneven, weights under 500 lbs. weak to mostly 1.00 lower, over 500 lbs. steady. Feeder Heifers steady. Demand moderate. Supply mainly Choice and Mixed Good and Choice 400-700 lb. steers and 400-600 lb. heifers.

FEEDER STEERS: Choice 300-500 lbs. 42.50-45.75; 500-600 lbs. 42.00-46.00; 600-700 lbs. 40.50-43.75; 700-850 lbs. 40.00-41.50. Mixed Good and Choice 375-600 lbs. 41.50-43.75. Few lots Good 400-600 lbs. 40.00-42.25.

FEEDER HEIFERS: Choice 325-500 lbs. 35.00-37.00; 500-700 lbs. 35.50-37.50. Mixed Good and Choice 300-500 lbs. 33.00-35.75.

East Coast Carlot Meats

Princeton, N.J.
Jan. 11, 1978

Compared to Tuesday's close: Beef commitments and demand Good as reported by USDA. Choice 3 steer beef steady to firm. Prime special fed veal steady. Good and Choice boning veal firm to 4.00 higher. Lamb compared to last week 5.00-10.00 lower. Fresh pork loins 2.25-4.00 higher.

STEER BEEF
27 Loads
Choice 3 600-800 lbs. steady; 3 700-900 lbs. 7200 firm; 4 700-900 lbs. 6800-6825, load 6650.

Good 3 600-800 lbs. 6700.

HEIFER BEEF
Good 2-3 400-500 lbs. load 6175.

CHOICE 3 PRIMAL BEEF CUTS
9 Loads
Arm Chucks 90-130 lbs. 5700-5800 .50-1.00 higher; Rounds, Steer 60-85 lbs. 8600; Full Plates 4400-4450.

LAMB CARCASS, CHOICE AND PRIME 3-4
15 Loads
Compared to last week: 55 lbs. down 12300-12500, few to 12700 5.00 lower; 55-65 lbs. 12000 6.00-8.00 lower; 65-75 lbs. 11700 7.00-10.00 lower.

VEAL CARCASS HIDE ON
Prime (special fed): 180-250 lbs. 11300-11400 steady.

CHOICE BONING TYPE
Northeastern Suppliers: 65-75 lbs. H6400-6800 all firm to 4.00 higher; 55-64 lbs. 6200-6600; 45-54 lbs O 6000-6400; 35-44 lbs. 5800-6200; 34 lbs. down 5600-6000.

Midwest and West Coast Suppliers: 70-80 lbs. Ltd. 6800-7000 all mostly 2.00 higher; 60-70 lbs. Ltd. 6600-6800; 50-60 lbs. Ltd. 6400-6600; 40-50 lbs. Ltd. 30-40 lbs. Lbtd. & 10-6200.

FRESH PORK CUTS
Loins 14 lbs. down 9500-9575; 1-17 lbs. 9400-9475 2.25-4.00 higher.

SKINNED HAMS 20-26 lbs. Load 8200.

CURED AND PROCESSED MEATS
2 Loads
SKINNED HAMS 16-19 lbs. 8300.

Belleville Auction

Belleville, Pa.
January 11, 1978

CATTLE 140. Compared with last Wednesday's market, slaughter cows \$2 to

\$3.50 higher. Couple Standard slaughter steers 30.50 and 30.85. Few Good slaughter heifers 33.85-35.75, few Utility 29.60-32.75. Utility and Commercial slaughter cows 29.00-32.60, individual at 32.85, Cutters 28.00-30.50, Canner and Low Cutter 26.50-38.00, Shells down to 23.00. Few Yield Grade No. 1, 1000-2200 lbs. slaughter bulls 30.35-35.10.

CALVES 155. Vealers steady to \$5 higher. Choice vealers 68.00-79.00, individual at 81.00, Good 56.00-65.00, few Standard and Good 110-130 lbs. 44.00-50.00, 90-110 lbs. 34.00-41.00, Standard 70-85 lbs. 27.00-35.00. Farm Calves: Holstein bulls 90-120 lbs. 40.00-51.00, couple to 57.00.

HOGS 360 Barrows and gilts mostly 75 cents \$1.25 higher. US No. 1-2 200-240 lbs. barrows and gilts 47.10-47.60, No. 1-3 195-240 lbs. 45.10-46.70, No. 11-3 170-185 lbs. 38.60-40.60. US No. 1-3 350-675 lbs. sows 35.75-39.75. Boars 23.00-30.00.

FEEDER PIGS 220. US No. 1-3 20-40 lbs. feeder pigs 10.50-26.00 per head, No. 1-3 60-150 lbs. 37.00-45.50 per head.

SHEEP 17. Few Choice 95-135 lbs. woolled slaughter lambs 48.50-60.00, few Utility 60 lbs. at 49.00-54.00; few slaughter ewes 10.50-19.00.

Middleburg Auction

Middleburg, Pa.
January 10, 1978

CATTLE 211. Compared with last Tuesday's market, slaughter cows \$1.50 to \$2.50 higher. Choice No. 2-4 1000-1200 lbs. slaughter steers 42.50-44.35, Good 38.25-42.00, few Standard 33.50-36.00. Few Choice slaughter

heifers 36.75-40.85, few Good 34.50-36.25, few Utility 29.50-31.75. Utility & Commercial slaughter cows 27.50-30.00, couple to 31.50, Cutters 26.50-28.50, Canner & Low Cutter 24.00-26.25, Shells down to 23.00. Few Standard slaughter bullocks 33.00-34.85. Few Yield Grade #1 1350-1750 lbs. slaughter bulls 33.85-35.10. Few Good 300-700 lbs. feeder steers & bulls 30.00-35.00.

CALVES 152. Vealers steady to \$5 higher. Choice vealers 66.00-73.00, one at 77.50, Good 56.00-66.00, Standard & Good 110-130 lbs. 45.00-58.00, 90-110 lbs. 37.00-45.00, few Standard 70-85 lbs. 30.00-35.00. Farm calves, holstein bulls 90-120 lbs. 39.00-48.00.

HOGS 318. (Monday, January 9, 1978). US No. 1-2 200-230 lbs. barrows & gilts 47.00-47.85, No. 1-3 190-250 lbs. 46.00-47.20, No. 2-3 240-270 lbs. 43.10-45.75, No. 1-3 180-200 lbs. 44.00-45.50. HOG 108. (Tues. Jan. 10, 1978). Barrows & gilts \$3 higher.

US No. 1-2 200-235 lbs. barrows & gilts 48.75-49.75, few lots No. 1-3 200-235 lbs. 48.35-48.50. US No. 1-3 300-550 lbs. sows 34.00-37.75. Few Boars 27.50-28.75.

FEEDER PIGS 230. US No. 1-3 20-35 lbs. feeder pigs 12.50-20.00 per head, No. 1-3 45-60 lbs. 28.00-36.00, Utility 15-30 lbs. 7.00-10.00 per head.

SHEEP 7. Few Choice 110-140 lbs. woolled slaughter lambs 48.00-60.50.

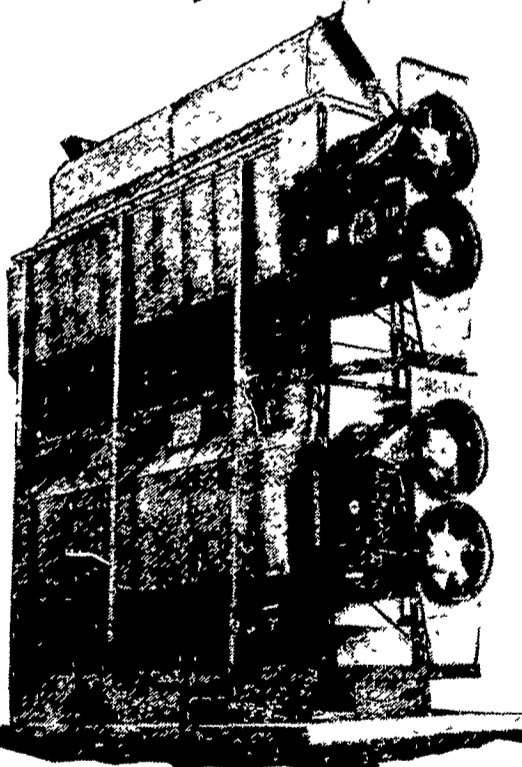
Carlisle Auction

Carlisle, Pa.
January 10, 1978

CATTLE 152. Compared with the market last week: Choice slaughter steers 42.60-42.85, Good 36.50-39.85, Standard 31.00-36.00. Good slaughter heifers 37.25-39.50, Standard 33.10-36.35, Utility 27.50-33.00. Utility and Commercial slaughter cows 27.50-29.00, Cutters 24.25-28.00, Canner and Low

(Turn to Page 13)

1000 H Continuous Multi-Stage "Temper Dries" to 2,015 BPH



Big and New from Farm Fans Capacity to 2,015 BPH Enables easy, low cost expansion by simply stacking a third unit when your grain drying needs require, thereby boosting total capacity to 3,010 BPH Allows operator to go from Continuous Flow to Multi-Stage grain drying with just the flip of a switch Easy to install, reasonable first cost Fast, simple clean-out Backed by Farm Fans 27 years experience designing and building superior grain conditioning equipment offering the world's most complete line of models and sizes Call for literature and full information.



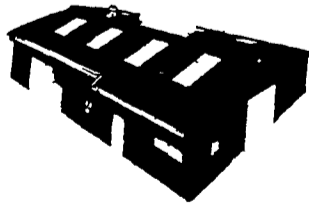
ASCS FINANCING
Early Order Discounts
Tam Agri Corporation
Dillsburg, Pa. 17019
(717) 432-9738

AGWAY
LP GAS
BULK METERED SERVICE
AGWAY PETROLEUM CORP.
Box 1197, Dillerville Road, Lancaster, Pa
Ph 717-397-4954

VERNON E. MYER

STEEL BUILDINGS & GRAIN STORAGE

RD 4, LEBANON, PA. 17042
PHONE: (717) 867-4139



NEW FINANCE PLAN -
15% down payment
5 years on balance
7% interest
A.S.C.S. Financing

COMMERCIAL and AGRICULTURAL BUILDINGS
WE OFFER COMPLETE ERECTION ON ANY SIZE OR STYLE BUILDING

Mail Coupon Today!

- SEND STEEL BUILDINGS LITERATURE
- SEND GRAIN STORAGE LITERATURE

NAME _____
ADDRESS _____
CITY _____ STATE _____ ZIP _____
TELEPHONE _____

