

HELP WANTED

AMS/OIL the quiet leader in synthetic lubrication needs dealers. No investment, excellent commission and bonuses. Full or parttime. 717-872-7324.

WANTED STOCKYARD MANAGER

Wanted - Manager with stockyard experience 9 million dollars gross sales annually Salary \$16,000 and up.

APPLY
P.O. Box 452
Vinton, VA 24179

HELP WANTED

Models

FOR
Television •
Fashion •
Commercials •
Shows •
Advertising •
apply this week—1-5 P M
Beginners & Professionals
over 18

The Twelfth Circle
225 West 57th St. NYC
4th FLOOR

EXPERIENCED AND RELIABLE TRUCK DRIVERS NEEDED

Full and Parttime
straight truck and tractor-trailer.
Constant Expansion continues to increase
our need for qualified drivers.

GOOD PAY AND EXCELLENT FRINGE BENEFITS

Requirements - at least 25 yrs. old with minimum 3 years experience in heavy truck driving with clean driving record for the past 3 years.

Apply in person at:

PLAIN & FANCY EGG RANCH
(located between Manheim & Elizabethtown)
or call Mr. Dennis Shutt at 717-665-3511

SITUATIONS WANTED

Experienced young married man seeks permanent position on 50 to 60 cow dairy. Needs good wages and housing. Gary Mearkle, RD 2, Myerstown, Pa. 17067. 717-866-7327.

Young man with B.S. degree in Agronomy desires to rent tillable 100-250 acre farm on Md. eastern shore. Cecil, Kent or upper Queen Anne's Co. preferred. Have life-long experience in grain production. Will consider crop share arrangement. Send reply to P.O. Box 148, Salebury, PA 18963.

SITUATIONS WANTED

Young married family man looking for work on a dairy farm. Prefer Central Pa. region. Agricultural background, Penn State graduate. Interested in future option to buy from a retiring party. Ph: 607-243-7473.

Young married couple, experienced in small beef operation with established retail customers interested in farm management in cooperation with owner. Have general farming experience with limited dairy knowledge but willing to learn. Also interested in future options to lease or buy. Write P.O. Box 22, Nazareth, Pa. 18064.

TRUCKS

YEAR END CLEARANCE ALL VANS & SPORTMANS MUST GO

(4) 73 & 76 Club Cabs, 3/4 & 1/2 Ton PICKUPS, VANS & 4-WHEEL DRIVES
LARGE SELECTION

PETTICOFFER DODGE, INC.

Route 230 East Next to Shopping Center Elizabethtown PA
PHONE 717-367-1808

TRUCK FOR SALE



1967 Ford C700 Poultry or Livestock Hauler

- 144-162 poultry coop capacity
- 21 foot bed; 26,000 lb. gross weight
- new paint, inspection; like new radial tires
- duel gas tanks
- Price. \$3850 with coops, \$3400 without
CALL 215-536-3155

TRUCKS

CHRISTMAS MEANS GIVING AND MIKE RHODES IS PLAYING SANTA. WITH THE PURCHASE OF ANY VEHICLE LISTED BELOW WE WILL GIVE YOU \$250.00 IN CASH AT TIME OF DELIVERY. HO! HO! HO!



4 WHEEL DRIVE

- '77 Chevy 1/2 Ton Pickup, 8 Ft Bed, V8, Auto., PS, PB, Scottsdale Pkg, Fact Air, Low Miles - \$6995.
- '76 Ford Bronco, V8, St Shift, PS, PB, Fr Wheeling Hubs, Low Miles - \$5495.
- '75 Jeep 1/2 Ton Pickup, 360 V8, 2 Barrel Carb, Auto, Quadratrack - \$5495.
- '75 Chevy 1/2 Ton Pickup, V8, Auto, PS, Low Mileage - \$4995.
- '74 GMC Suburban, V8, Auto, PS, PB, Fact Air - \$5495.
- '74 Jeep Wagoneer, V8, Auto, PS, PB, Fact Air, Low Miles - \$4995.
- '74 Dodge 1/2 Ton Pickup, V8, Auto, PS, PB, Fact Air, Fr Wheeling Hubs, Adventurer Sport Package, Low Miles - \$5295.
- '74 Chevy 1/2 Ton Pickup, V8, 4 Speed, PB - \$3995.
- '74 Blazer, 6 Cyl, Auto, PS, PB, Power Angle PLOW, Driven Only 27,000 Miles - \$5395.
- '74 Plymouth Trailduster, V8, Auto, PS, PB, AM-FM Stereo, Low Miles - \$5295.
- '73 Toyota Land Cruiser, 6 Cyl., St. Shift, Fr Wheeling Hubs, Low Miles - \$3895.
- '73 Int. Travel-All, V8, Auto., PS, PB, Fact Air, Fr. Wheeling Hubs, Cust. Interior, Elec. Tailgate, Driven Only 38,000 Miles - \$4395.
- '68 Chevy Suburban, V8, St. Shift, PB, Fr. Wheeling Hubs - \$2295.

TRUCKS

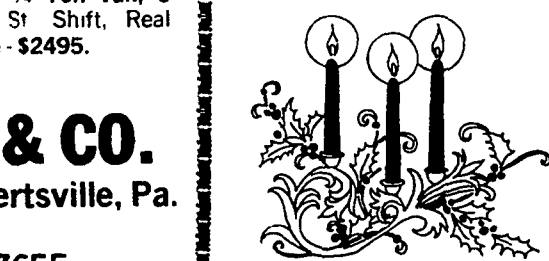
- '77 Ford 1/2 Ton Pickup, 6 Cyl, St Shift, White, Very Low Miles - \$4195.
- '76 Ford 1/2 Ton Pickup, 6 Cyl, St Shift, Driven Only 16,000 Miles - \$4195.
- '76 Chevy 1/2 Ton Pickup, 6 1/2 Ft Bed, 6 Cyl, St Shift, PS, Only 13,000 Miles - \$3795.
- '75 Ford 150 Super Cab, V8, A, PS, PB, Flip Down Seats In Rear - \$4395.
- '75 Chevy 3/4 Ton, V8, Auto, Low Miles - \$3995.
- '75 Chevy Suburban, V8, Auto, PS, PB, AM-FM, Only 14,000 Miles - \$4995.
- '74 Chevy 1/2 Ton Pickup, V8, St. Shift, PS, PB - \$3295.
- '74 Ford 3/4 Ton Pickup, V8, Auto, PS, PB, Low Miles, Must See To Appreciate - \$4295.
- '74 Int. Scout, V8, St Shift, 2 Tone Paint - \$2995.
- '74 Ford 1/2 Ton Pickup, Ranger XLT, V8, Auto, PS, PB - \$3595.
- '74 GMC 1/2 Ton, V8, Auto, PS, 2 Tone - \$3795.
- '74 Ford 1/2 Ton Pickup, Ranger XLT 390 V8, Auto, PS, AM-FM Stereo, AC, Black & White - \$3995.

VANS

- '77 Dodge Royal Sportman, 8 Pass, 360 V8, Auto, PS, PB, Fact Air, Radial Tires, 2 Tone Blue, Low Mileage - \$7695.
- '77 Chevy 3/4 Ton Van, V8, Auto, PS, PB, AM Radio, Showroom Condition - \$4995.
- '75 Chevy 1/2 Ton Van, 6 Cyl, St Shift, Low Mileage - \$4395.
- '74 Dodge Kary-Van, V8, A, PS, PB, 10 Ft Body, 38" Swing Out Rear Doors, 8200 GVW, Low Mileage - \$4695.
- '74 Dodge Window Van, V8, Auto, PS, PB, Low Mileage - \$3995.
- '68 Ford 3/4 Ton Van, 6 Cyl, St Shift, Real Clean - \$2495.

MIKE RHODES & CO.

Rt. 663 & Swamp Pike, Gilbertsville, Pa.
(215) 327-1380
or toll free 800-362-7655



TRUCKS

For Sale - White Eskimo puppies, 6 weeks old, Isaac S. Fisher, RD 2, Gordonville, Pa. 17529; 1 mile West on Soudersburg Rd.

For Sale - Purebred English Shepherd stock dogs, an ideal farm companion, puppies \$35, 5 wks. old on Dec. 25. Ph: 215-445-5120.

Give a Merry Christmas & Happy New Years gift! AKC black Lab. pup. True pet, top gun dog, reasonably priced. Brooks Conoy Dutch Farms. 717-367-1861.

WANTED TO BUY

Puppies, 7 to 9 weeks old, in litter lots. Pure breeds and half breeds. Cash money paid. Will pickup every Wednesday. For resale in my pet shop. Write to Charles Hackett, 3743 N. 5th Street, Philadelphia, PA 19140 or call before 8 p.m. Mon., Tues., & Thurs. only. 215.229-0449. Give breed-age-color when writing. Also some kind of direction. Thank you.

TRUCKS

J.R. OPP CO.
Custom Truck Bodies
RD 1, Muncy, Pa.
Ph: 717-546-3397

Priced to Sell - GMC 6x6 ton Army truck - new 160 Cummins engine, new winch, new trans., excellent condition. \$9000.00. Call after 5 p.m. 609-939-3757.

For Sale - 1973 International new 16' grain dump \$6500.00, 1969 IHC crew cab new 16' dump power steering \$5000.00, 1972 White cab over 20' new grain dump \$7500.00, 1971 IHC 20' aluminum body \$2975.00, others. Call 814-793-2829.

CURRY SUPPLY
MARTINSBURG, PA

For Sale - 1971 Int. truck with 20 ft. livestock body, M.H. Eby Inc. Blue Ball, PA 717-354-4971.

For Sale - 1957 3/4 ton Ford pick up truck, good tires and running order \$295. 717-786-3487.

For Sale - 1969 Int. 1890 with 392 engine, 33,000 lb. licence and 10 ft. Stoltzfus dry lime spreader body. Will sell separately. 215-683-8396.

1972 White cab over 20' new grain dump, power steering, air brakes \$7500.00; 1971 IHC new 16' grain dump \$6500.00; 1965 Ford 16' flat dump, air brakes \$2975.00; 1970 IHC 18' aluminum van \$2975.00; 1969 Ford 950 series tandem 20' body \$5000.00. Others, call 814-793-2829.

CURRY SUPPLY
MARTINSBURG, PA

For Sale - Gooseneck Trailer and Truck 1973 Chev. dual wheeled 1 ton pickup with 20x8 ft. Haynes Gooseneck trailer. Ideal for farm to farm or farm market movement of cattle. Used 4 years for beef show cattle. Now depreciated, excellent rubber. Price \$1750.00 each or \$3500.00 for both. Must sell by Dec. 30. MARLEE FARM, Woodsboro, Md. 301-898-7272.

PETS

MISCELLANEOUS

For Sale - Oak, poplar and basswood lumber (green). Fence boards and sawdust. Moyer's Sawmill, RD 2, Annville. Ph: 717-865-3822.

For Sale - RT Randall meat stuffer with air compressor. Also 50 gal. stainless steel mixer surrounded by steam jacket, best offer. 215-267-5059 or 717-733-0703.

For Sale - Pheasant hunting September to April 30. Pheasants for stocking, all ages. Reading Hunting Area, Birds Boro, RD 1, Pa. 19508. 215-856-7670.

PETS

CASH FOR PUPS

I need Purebred and cute mixed litter lots, 7 to 10 week old. Clean and healthy. Contact "Jo Jo The Dogman" at Root's Farmers Market, RD1 Manheim, PA. Every Tuesday 6 p.m. to 9 p.m. No Phone Calls. P.S. \$50 Prize for cutest pup purchased on Tuesday, Dec. 13.

HOUSEHOLD GOODS

For Sale - Two door Servel gas refrigerator; three compartment stainless steel sink; one Meyers Bros. piston type pump; Speed Queen automatic washer. Ph: 215-582-8132 or 582-2996.

CANNEL COAL in 40 lb. and 50 lb. sizes. A fine fuel for your fireplace, Franklin stove, etc. Stop in to see it and for the brochure. W.L. ZIMMERMAN & SONS, Intercourse, Pa. Ph: 717-768-8291.

WOOD/COAL BURNING STOVES

High Efficient Baffle, Air Tight, Lot Burning Stoves.

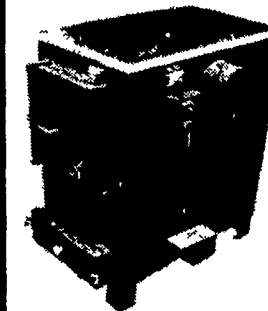
Send 25c for Catalog.
★ 44 Models In Stock ★

WOOD HEAT

Rt. 212 Pleasant Valley Quakertown, Pa. 18951
(215) 346-7894

STOLTZFUS HARNESS SHOP

Honey Brook RD1
1st farm out of town
along Broad St.



Shipment of

Riteway

Heaters
Model 37 - Wood & Coal
Combination Fire Brick
and Cast Iron shaking
Grates

and
Model 2000 - Wood only
Both heaters are thermo-
static controlled
Cabinets available for
Model 37 and 2000
Furnaces and Boilers
Available.