

PUBLIC AUCTION**DOZER - ROTOMIST
SPRAYER - 4 TRUCKS
EQUIPMENT & TOOLS**

The undersigned company, having completed several large demolition contracts, and reducing their inventory, will sell the following on the premises, Vale Landscaping, 304 Watervale-Carr's Mill Road (where Vale Road crosses over the Bel Air bypass), Harford County, Bel Air, Maryland (Vale. Road is off of Md. Rt. 24, Rocks Spring Road, at Bel Air Memorial Gardens) on

SAT., DECEMBER 17, 1977

At 9:30 A.M.

Dozer and Equipment: John Deere 1010C, 4 cylinder diesel crawler w/3 pt. hitch and model 212 hydraulic 4-way angle dozer and blade; John Bean model 100 rotary mist sprayer, seat and all hydraulic control w/R10 - 2 piston pump - Hurricane Jeep engine w/electric start, mounting for truck or trailer; Gravely tractor-powered back hoe, all hydraulic 3' digging depth w/14" bucket; Brillion 5' - 3 pt. hitch seeder w/2 boxes; Danhuser 3 pt. hitch post hole digger w/auger; 3-3 pt. hitch York rakes w/guide wheels, 4 ft. - 6 ft. - 8 ft.; Blackhawk ground saw (ditch digger) - 36" deep, 4" wide; 3 pt. hitch sod cutter w/ weight; Model 700L 7½ ton Ramsey wench for truck w/ bumper and cable; Odel asphalt spreader - 8 ft. - 10 ft. truck mounted; Giant Vac 7½ h.p. Coler engine - 8" intake and 4 out; 8' Easy Flow New Idea line and fertilizer spreader; 4' Gandy line and fertilizer spreader w/tractor hitch; Gravely power tractor snow plow 2 - 10' Valkflared angle snow blades for truck or grader w/hydraulic shocks; 2 mountings for 8 and 12' blades; 3-30" high heavy duty snow blades - 8 ft., 6 ft., and 5 ft., - all angles and w/skids, (5 ft. blade would fit a tractor loader); Ford 6 ft. angle dozer blade w/frame and cable lift; 2 - 50 gal. barrel spray caft w/ hose and trailer hitch; 2 man portable post hole digger w/ auger and engine; small air compressor and cart; Shallow well pump w/motor; industrial furnace vacuum cleaner; P.T.O. hydraulic pump; P.T.O. water pump; 2 trailer axles w/tires; Lambert 26" leaf and lawn sweeper w/tractor hitch; Goodall lawn edger, Model 10 BT, w/gas engine; 6' pull type roller; 2 ft. lawn aerator; 6 ft. x 6 ft. trailer; 3 hydraulic pumps and tank; sumbergeable jet pump; 8 ft. TEE-WEE snow mobile trailer w/winch and ball hitch; Salamander heater; 50,000 B.T.U. ceiling mounted gas heater; 2 - 100 ft. hose reels, John Beene; 4 ft. Simplicity rotary mower (Lawn Lord); 6 used 3½ h.p. rotary lawn mowers; gas space heater; 2 sheep shears, Stewart; 40" sweepster; other items.

Trucks and Power Equipment: 1966 International Load Star cab over engine, 2½ ton truck - 345 V8 gas engine w/20 ft. steel bottom and steel header body w/4 ft. sides; 1962 Jeep model FC170, 1 ton, truck w/10 ft. bed, 4 wheel drive, rear dual wheel w/Valk hydraulic lift and 2-way angle snow blade; 17 ft. single axle, Fruehaul, telescoping dump trailer, type 12; 1966 Chevy, 2½ ton truck, model 60 Viking, V8 engine w/Snyder 18 ft. van body (dry); 1963 2½ ton Diamond T model 22 truck w/12 ft. dump flat bed and 4 ft. sides; 12 ft. dump body, steel; 40 gal. gas truck tank; 15 used truck and pickup tires; 8 ft. state truck body w/rack, 4 prs. of hydraulic dump telescoping lift cylinders, hydraulic pumps and tanks; 18 h.p. Wisconsin gas engine w/clutch and pulleys, running condition; 5 h.p. Briggs-Stratton engine w/reduction gear; 30 h.p. Wisconsin engine and reduction transmission; rear mounted A frame for pickup truck w/post and winch.

Tools Inventory and Miscellaneous Equipment: 3 gas tanks - 550,275, and 175 gal. w/2 pumps; 12000 red and white stone face bricks in 500 lots; 5,000 slate shingles; 250 ft. 2" perforated plastic drain pipe; roll new 4 ft. woven wire; roll of barbed wire; fiberglass and terracotta drain pipe, 4" - 6" 12"; 10 - 4 ft. linels; reinforcing wire; 500 ft. of ¾" heavy duty water hose; 20 ft. of 3" suction hose and strainer; 20 ft. corrugated steel 18" drain pipe; 1 length of railroad track, 30 ft.; 2 - 12 ft. x 6 ft. steel skid pans; 6 ft. x 5 ft. mortar box; 100 ft. 1" high pressure hose 1,000 psi; 1 ton of 10-6-4 fertilizer; 1 ton Bakerm dolomite lime; chain vise; 12 sets of snow chains, truck and pickup; 1 set 28" weed tractor chain; 7 - 10 gal. milk cans; 5 h.p. electric motor; 4 railroad jacks; 4 hand grease guns; 3 buckets assorted pipe fittings; 20 wooden shutters; assorted log chains; 22 gal. hot water heater; 2 - 20 ft. 4" x 6" angle steel; 6 large brass valves; 10 ft. 16" flex suction hose; 2 - 10 ft. 6" steel drain pipes; pipe lift; 15 ton of used bricks; truck mirrors; hydraulic hoses; lot of angle iron; 3 basement columns; 50 window sashes; 30 ft. steel fire ladder; assorted heavy duty and light wire cable slings; exterior mercury vapor light; complete 2 bales of baler twine complete; beer kegs; and many other items.

Not responsible for accidents Day of Sale
TERMS: Cash or Personal Check Day of Sale/All Items Sold As Is

VALE LANDSCAPING CO. ENTERPRISES

304 Vale Rd.
Bel Air, MD 21014

Auctioneer

William H. Amoss

Complete Auction and Appraisal Service

2037 Pleasantville Road

Fallston, Maryland 21047

Phone: 877-7005 or 838-3000

Milk slogan challenged and defended

By JOHN F. BROOKMAN
United Dairy
Industry Association

In this month of launching resolutions for the new year, let's resolve to be fair to people, products and principles. And if lifestyles, competitive foods and operating maxims disagree with our current beliefs, let's strive to be objective.

From this corner, I resolve to keep the record straight for milk.

What set me off?

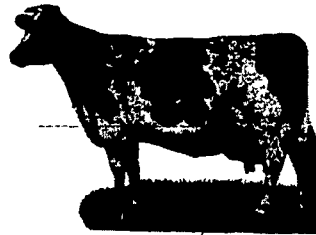
A copy editing suggestion by a syndicated columnist to change the "You never outgrow your need for milk" theme to "You never outgrow your need for calcium."

Even though milk supplies three-fourths of our calcium, I think the new copy approach is indicative of current attitudes. It smacks of today's literal interpretation of too many things that seem designed to take all the fun out of life.

More than 16 years ago, when American Dairy Association proudly pronounced that "you never outgrow your need for milk", it was accepted by consumer and scientific "publics." Today, this premise is challenged by some literalists who contend that "you" means each and every one of us.

Today, we live in a label-conscious society where flights of fancy are grounded and poetic imagery is suspect. No longer can we say that a particular dairy product "stays with you and not on you." Even though that copy approach is designed to show the satiety value of a dairy food, it isn't specific enough.

Servings must be specific too. For example, you must say one serving (4 ounces), provides so many calories or grams of fat or protein or whatever.

**SHORT NOTICE
DAIRY HERD
DISPERSAL****THURS., DEC. 15, 1977**

At 10:30 A.M.

Just off Rt. 73 between Boyerstown & Oley, turn north on 1st blacktop west of Pleasantville in Oley Twp., Berks Co., PA.

76 Holstein cows fresh, close fresh & close springers, approx. 30 of these animals are registered blood lines such as Elevation, Arlina Chief, Astronaut, plus other outstanding breeds. Lots of these cows are milking 70 to 80 lbs. few up to 100 lbs. DHIA herd average 16,166 milk & 566 lb. of fat. Animals have been TB & Bangs tested & pregnancy checked by Veterinarian.

Reason for sale—help situation.

Terms—Cash or check, day of sale.

Sale ordered by
PAUL E. LABE

Sale conducted by
Ralph W. Zettlemoyer
Auction Co.
Tele. (215) 285-4616

AUCTION

**COMPLETE LIQUIDATION
OF HARDWARE,
BUILDING SUPPLIES
TRUCKS, & EQUIPMENT,
LAWN & GARDEN TRACTORS
ETC.**

MON., DECEMBER 19, 1977

9:30 A.M.

Located on corner of N. 5th Ave. & Chestnut St., Royersford, Pa., known as the Hay Press.

TRUCKS

1955 Ford 1500 gal. tanker; 1960 Ford 2000 gal. tanker; 1955 White 2500 gal. tanker; 1965 Chevy 11,000 GVW 1 ton; 1966 Chevy utility body plumbing truck, 1 ton, etc.

LAWNMOWERS

2 New 1975-76 Model 85, 8 hp, elec. start, Massey Ferguson; 1 used 4 ft. sickle bar for IH or John Deere Haban; 1 used 1964-65 IH Cub Cadet, Model 100, 10 hp with 42 in. mower & elec. start; 1 used 1946065 Cub Cadet Model 70 with 38 in. mower, elec. start; 2 New Massey Ferg. riding mowers, Model 832, recoil start.

HARDWARE, BLDG. SUPP., ETC.

Stoves, fireplaces, elec. saws & drills, lumber, elec. fixt., plumbing fixt., small tools, nails, hinges, paint, ceil. tile, lime, fertilizer, etc., etc.

An unusual opportunity to buy at your price.

By order of
**OEHLETT BROS.
OIL CO., INC.**

Aucts.

Clay C. Hess &
Richard Moyer
Collegeville, Pa.

(215) 489-7127 or (215) 948-8050

Specifically, my grandmother couldn't tell you all those things, but her chocolate cupcakes tasted great! Nor could she give you the recipe with exact ingredient amounts.

What ever happened to a punch of this or that? What ever happened to imagination and "poetic license?"

If this trend continues, operatic arias sung by wounded suitors will be short, poetry will disappear and our label-oriented citizens will judge cartons, cans, packages, and program listings by the first item, its size and whether or not it's in bold type.

From this corner, I fondly remember the Popeye cartoons 'Toot, Toot.' I

watched his courting of Olive Oyl disrupted daily by Bluto, the villain.

But Popeye ate his spinach, became instantly strong and won the cinema reel battle.

Did that encourage me to eat my spinach?

Certainly, it did.

Did Popeye make me brave enough to fight the bully in the next block after I had eaten my spinach?

Of course not.

I never believed that Popeye was transformed from mite to mighty by a can of spinach. I did believe it was good for him, and me.

What ever happened to the "good old days," or weren't they really "good?"

Popeye, where are you?

**CONSIGNMENT
SALE****MON. DEC. 19, 1977**

9:30 A.M.

CONSIGNORS WELCOME

**TURN YOUR
MACHINERY INTO
CASH**

CONTACT US NOW!

WENGER'S**FARM MACHINERY INC.**

S. RACE ST., MYERSTOWN, PA.

17067

PH: 717-866-2138

PUBLIC SALE

**OF
GARAGE EQUIPMENT
TOOLS - TRUCK
GASOLINE ENGINE**

SAT. DEC. 17, 1977

9:00 A.M.

On premises in Ono along old Route 22 Lebanon Co. Pa.

1939 Chevy stake truck w/wrecker, crane, 5 H.P. Waterloo gasoline engine, floor model drill press (no motor) drill press stand, drill bits, wheel balancer, Sun motor tester, riveter, plug cleaner, Sioux valve refacing machine, 2 floor jacks, Bishman Sav-lift (air), battery charger, hydraulic jacks, acetelene outfit, welding rods, 1 h.p. air compressor, air hose, portable air greaser, Wolfs portable greaser (manual), grinder w/motor, bench grinder, Bear headlight tester, metal drums w/pumps, bench vise, anvil, D.B. chain saw, elect. saw, elect. drill, chain hoist, chains, floor creepers, hand greasers, tool boxes, shelves, Wolfshhead elect. wall clock, Burroughs manual adding machine, Coke cooler, owners, manuals for Model T Ford - 1925 Hudson - Willys Knight - 1926 Chevy & Chevy 490, parts and motor manuals (some old), 1914, - 1915 license plates, Model T Ford coil tester & coils, Ford sign; other signs, Antique car parts, motor oil, fan belts, new innertubes, used tires, parts bin, large assortment of hand tools, nuts, bolts, and many other items.

Conditions by,

JONAS M. MEYER

Atty. in fact for

Ezra G. Meyer

Auctioneers

Roy I. Ebersole & Son

Lunch on grounds