

# Beef cattle management stressed to farmers

By KENDACE BORRY  
**EPHRATA** - Beef cattle management was the topic discussed at the Ephrata Area Young Farmers meeting held December 6, at the Ephrata High School. Advisor Charles Ackley and Fred Frey, of Frey Bros., Quarryville, spoke on the aspects of feeding programs and equipment necessary for operation of beef programs. According to Ackley, who based his talk on research done at the Michigan State University, there are several factors in management that through careful work, can eliminate the extra costs of poor feedlot management.

The following factors were stressed:  
 Feeder quality and health should be good, being that a careful farmer would buy high performing cattle and have a good health program. His lot conditions would be the most economical, and have the least stress effect on his animals. Feed intake should be normal or above. For his ration formulation and feeding system, the careful farmer uses a balanced ration, with the least cost, aiming for an optimum combination of grain and roughage feeding. A careful feeder should use both a growth stimulant

and a metabolic stimulant. He works to get the best sale condition of his cattle, aiming for a low choice, yield grade of 2½ to 3½. By following these management factors, the differences in cost between a careful feeder and a careless feeder could amount to as much as \$138 per steer under optimum conditions, according to the Michigan State University's findings. Then speaking about the two-phase feeding system for steers, Ackley explained that in this program, all corn silage is fed to the cattle for the first 300 lbs. of gain, then a mixture of 42 per cent

silage and 58 per cent concentrate is fed until the cattle are finished. Advantages of the two-phase feeding system are said to be that the energy in the corn silage is utilized more efficiently without the added grain. Also the cattle show what is known as a compensatory growth when switched from high forage to high grain feed. In other words, they get a more efficient use of the diet when being fed during the high grain phase. It is also important to remember that

the rate of gain is highest when the cattle are the heaviest, therefore the cattle will spend fewer days on feed when the maintenance requirements are the greatest. According to results of testing the two phase feeding system, cattle provided a similar rate of gain but 1200 lbs. of less corn silage was used with the two-phase system. It was also said that the advantages of the two-phase system will change as corn, supplement, and NPN costs

change, but if a careful farmer watches the prices of his inputs, the two-phase system will never be far from being his most profitable system. Concerning the results of starting cattle on hay, it was brought out at the meeting that research indicated that regardless of the cattle source or the method of feeding hay, there was no advantage to feeding hay to new feeder cattle. The only reason hay was fed to the

(Continued on Page 127)

## THE SIGN OF QUALITY

YOUR FULL SERVICE DEALER

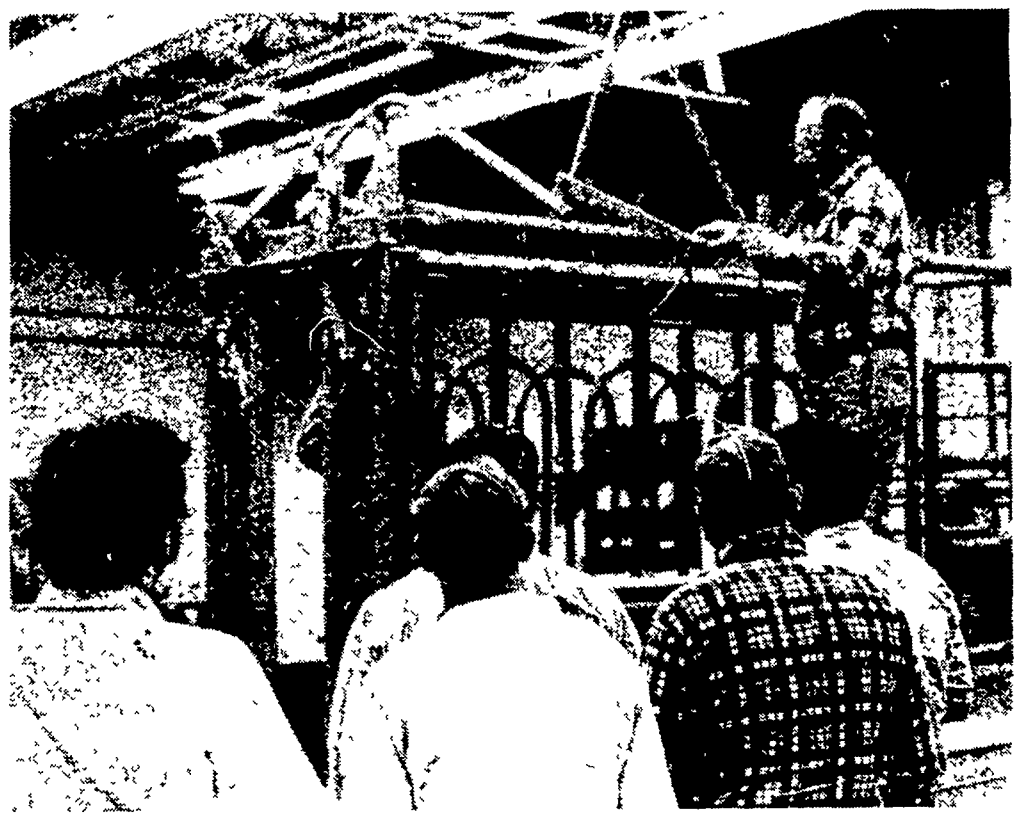
RD2, NEW PROVIDENCE, PA

Authorized Dealer -  
Mopro Liquid Supplement

Route Service Available  
Salesman: John Breckbill

**LET US HELP PLAN YOUR FEEDING PROGRAM**

"20 YEARS OF OUTSTANDING SERVICE"      CALL TODAY — (717) 786-2500  
 "SERVICE IS OUR GREATEST ASSET"



Farmers watch as the special features of a head gate and chute are explained at the EAYFA meeting.

# THINK BIG THIS CHRISTMAS

PRESENTING

1978 Polaris Cobra

Meet Cobra. The newest member of the Polaris performance family. A sleek, low-profile sled that will take two people dashing through the snow with super stability, great traction and the same dependable power inherited by every Polaris sled. Two twin-cylinder engine sizes offered - 333cc and 432cc. Catch a Cobra today in our showroom.

For A Merrier Christmas  
**WRAP IT UP HERE!**

**RESSLER'S SALES & SERVICE**

179 W. Main St.  
 Leola, PA 17540  
 PH: 717-656-6260

HOURS  
 Mon-Fri-7:30-9:00  
 Sat-8:00-5:00

## BIG CHRISTMAS SPECIALS

### ON SNOWMOBILES AND SNOWMOBILE CLOTHING

NOW TILL CHRISTMAS