

Hog Markets

Lancaster Market

November 21, 1977

HOGS: Barrows and gilts

mostly 50-1.00 higher; sows 1.00 higher.

BARROWS AND GILTS: US 1-2 200-230 lbs. 42.50-43.25; Few US 1 200-230 lbs. 44.00-44.25; US 1-3 200-240



THINK JERSEY!!

EARLY MATURING - In Pennsylvania Jersey heifers freshening as senior yearlings are making records over 13,000 lbs. milk on their first lactations. A Pennsylvania heifer fresh at 2-1 recently finished a record of 18,467 lbs. milk and 911 fat in 305 days.

LONG LASTING - The Jersey's size and agility keeps her in the herd longer. A Pennsylvania Jersey is finishing a lactation started at 13 years, 4 months which will give her a lifetime production to date over 155,000 lbs. milk, 8000 lbs. fat - due to calve shortly.

PROFITABLE - Jersey dairymen make more money with less investment than most dairymen. Jersey herds have less capital investment, less acreage, less expensive labor. Top herds in Pennsylvania average over 12,000 lbs. milk, 600 lbs. fat, \$800 to \$1100 over feed costs. Jersey cows efficiently produce high-solids milk, worth up to \$2.00 per cwt. more than standard milk.

PROLIFIC - Jersey cows settle easily, calve regularly. Jersey bulls are popular for breeding first-calf heifers of larger dairy and beef breeds due to ease of calving.

ENJOYABLE - Lovely to look at, easy to handle, Jerseys are popular in the show ring and as 4-H projects as well as in the commercial dairy herd.

To locate Jersey breeders in your area, write for a Directory to: Dreisbachs' Long Meadows Farm, RD #1, Hamburg, Pa. 19526.

PENNSYLVANIA JERSEY CATTLE CLUB

lbs. 41.25-42.25; Few US 2-3 255-270 lbs. 38.50-40.50.
SOWS: US 1-3 350-550 lbs. 31.00-34.50.

Lancaster Auction

HOGS: Barrows and gilts mostly .75-1.00 higher.

BARROWS AND GILTS: U.S. 1-2 200-230 lbs. 43.25-44.34, few U.S. 1 200-230 lbs. 45.00-45.50; U.S. 1-3 200-240 lbs. 42.00-43.10, few U.S. 2-4 260-280 lbs. 37.00-38.10.

Indianapolis

Wednesday, November 23, 1977

HOGS: 1000 - Barrows & gilts active, mostly steady. US 1-2 200-230 lbs. 42.50-42.65, 50 head 42.65. US 1-3 200-240 lbs. 42.00-42.50. Few US 2-3 250-270 lbs. 39.50-41.50. Scattered lots 270-290 lbs. 38.00-39.00.

SOWS: Active, steady to 25 lower. US 1-3 350-600 lbs. 33.00-34.50.

Lancaster Feeder Pig

Lancaster, Pa. Tuesday, November 22, 1977

Today 1613
Two Weeks Ago 1705

TREND: Compared to two weeks ago feeder pigs mostly uneven, US 1-2 steady to firm, US 2-3 weak to 5.00 lower. All prices on a per hundred weight basis.

US 1-2 20-40 lbs. 85.00-91.00; 40-50 lbs. 75.00-88.00; 50-60 lbs. 70.00-80.00.

US 2-3 30-40 lbs. 66.00-80.00 Couple lots 60.00-61.00. 40-50 lbs. 63.50-80.50; 52 head 58.00-61.50; 50-73 lbs. 57.00-73.00; 70-100 lbs. 44.00-53.00.

Vintage Hog

Saturday, November 19 Reported 807 head.
No. 1, 210-240 lbs. 42.00-42.85; No. 2-3, 210-240 lbs. 40.85-42.00; 21 head 42.85-44.25; sows 31.50-32.00; boars 28.50-29.50; heavystraights, 300-310 lbs. 39.00-39.50; lightweights, 160-170 lbs. 35.50-38.27.

Wednesday, November 23, 1977

Reported 420 head.
No. 1, 210-245 lbs. 44.25-45.00; No. 2-3, 210-240 lbs. 43.00-44.25, few up to 46.00; sows 32.75-35.50; boars 27.00-28.50; heavystraights, 280 lbs. 37.00; lightweights, 135-155 lbs. 35.25-35.75.

New Holland Hog

New Holland, Pa. Monday, November 21, 1977

Today 1566
Last Monday 1750

TREND: Compared to last Monday, barrows and gilts mostly 2.25-2.50 higher.

BARROWS AND GILTS: US 1-2 202-237 lbs. 42.50-43.60; 13 head 211-220 lbs. 43.75-44.00. US 1-3 194-244 lbs. 41.75-42.75; US 2-3 233-282 lbs. 39.50-42.00. 18 head US 2-4 275 lbs. 37.85.

Peoria Hog Auction

Wednesday, November 23, 1977

HOGS 3000: - Barrows & gilts active, fully 50-75 higher, instances 1.00 higher. US 1-2 200-230 lbs. 42.25-42.50, 50 head 42.75, 34 head 43.25. US 1-3 200-240 lbs. 42.00-42.25.

SOWS: Steady to 50 lower. US 1-3 350-500 lbs. 33.50-34.50.

St. Louis Hog Market

Wednesday, November 23, 1977

HOGS: 5500 - Barrows & gilts active, 50-1.00 higher, most advance on weights over 250 lbs. US 1-2 200-240 lbs. 42.00. US 1-3 200-250 lbs. 41.50-42.00. US 2-3 240-270 lbs. 40.50-41.50.

SOWS: Steady. US 1-3 300-500 lbs. 33.50-33.75.

Futures Trading

(Closing Bids as of Thursday, November 24)

	Chicago Cattle	Chicago Hogs	New York Maine Potatoes	Chicago Fresh Eggs
Dec.	42.40	42.95		46.10
Jan.				45.70
Feb.	40.02	38.80		
March			3.77	44.90
April	39.97	34.60	4.05	
May			4.67	
June	41.65	36.47		

Trend - Cattle are higher, Hogs are higher, Potatoes are lower, and eggs are higher.

Market Provided by Commodity Department Reynolds Securities, Inc.

CHICAGO GRAIN FUTURES

(Closing Bids as of Thursday, November 24)

	Corn	Wheat	Soybeans	Soybean Meal
Dec.	2.21 $\frac{3}{4}$	2.71 $\frac{3}{4}$		160.90
Jan.			5.94 $\frac{1}{2}$	161.40
March	2.82	2.28 $\frac{1}{2}$	6.02 $\frac{1}{2}$	164.70
May	2.85	2.32 $\frac{1}{4}$	6.10	167.10
July	2.87 $\frac{1}{4}$	2.33 $\frac{1}{2}$	6.14 $\frac{1}{4}$	169.80

Trend - Corn is higher, Wheat is mixed, Soybeans are lower, and Soybean Meal is higher.

Market Provided by Commodity Department Reynolds Securities, Inc.

U.S. Inspected Livestock Slaughter

Estimated Daily Livestock Slaughter Under Federal Inspection

	CATTLE	CALVES	HOGS	SHEEP
Week to Date	438,000	54,000	981,000	76,000
Same Period Last Week	435,000	55,000	934,000	74,000
Same Period Last Year	442,000	58,000	1,006,000	73,000

HAY, STRAW & CORN

-SALE-

Every Friday at 12 Noon.

Green Dragon Market & Auction

RD No. 4 Ephrata, Pa. 717-733-2334
1 mile North of Ephrata on N. State St.

J.M. HOOBER INC.

Serving You Since 1895

LANCASTER STOCK YARDS

Let us put your corn to work. At this time it makes good sense to turn corn into beef and pork. We at J.M. Hooper Inc. stand ready to assist you in the buying and marketing of all your livestock needs.

OUR BUSINESS IS MORE THAN LIVESTOCK
OUR BUSINESS IS SERVICE TO YOU

NEXT FEEDER PIG SALE - DECEMBER 6, 1977

J.M. Hooper Steer Division
Ph: (717) 397-6191, 569-2084

Please Call Us Soon

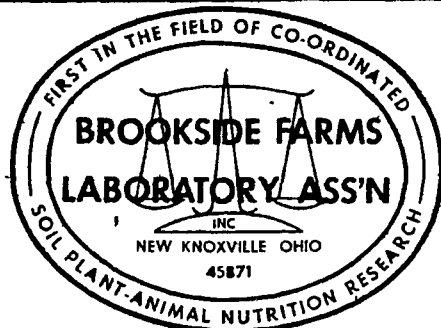
J.M. Hooper
Hog, Calf & Sheep Division
Ph: (717) 397-6191, 626-5659

CONTACT: JOHN CAMPBELL

Atglen, PA (215) 593-5529

GARY MCGEE
Spring Run, PA (717) 349-2340

DAN DERR
Conowingo, MD (301) 378-3280



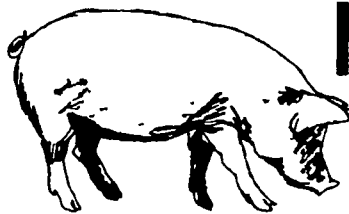
National Reputation - Local Service

ATTENTION CATTLE FEEDERS

Do you want to make buying your stockers and feeders easy. It can be very simple. Just call and give us your order. All orders filled to your exact specifications. Call us anytime. We can be very helpful.

NEXT FEEDER PIG SALE

TUESDAY, DECEMBER 6 - 1 P.M.



Consign all your feeder pigs to Walter M. Dunlap & Sons where they will be handled by a capable and experienced staff.

Feeder pigs received from 6 A.M. to 11 A.M.

WALTER M. DUNLAP & SONS

LANCASTER STOCK YARDS

Consignors can get state tags at our office, thereby saving 25c marketing expense

For Further Information, Call 717-397-5136