

Delaware 4-H winners named

DOVER, Del. - Nineteen Delaware 4-H members have been named state winners in the 1977 National 4-H awards program, according to James O. Baker, state 4-H leader. Three of the young people will receive prizes of U.S. savings bonds while the rest will attend the National 4-H Club Congress in Chicago on November 25 to December 2.

Winners include: Kathy

Beattie, Newark; Dave Bledyk, Bear; Michele Gawel, Wilmington; Ann Griesinger, Wilmington; Tori Annette McCord, Bear; Robin Elaine Miller, Wilmington; Marcia L. Whitlock, Middletown.

Brenda Fay Clark, Greenwood; Doug Crouse, Felton; Michael Everline, Harrington; David Mesibov, Houston; Terri Lynne Tarr, Greenwood; Janet Eileen Cannon, Bridgeville; Connie

Eskridge, Greenwood, and Samuel Hopkins, Lewes.

James R. Hukill, Harbeson; Earl Loockerman, Greenwood; Michael Pavlik, Rehoboth; and Karen Taylor, Seaford.

Each of these winners was selected on the basis of outstanding work on a specific 4-H club project. Topics covered include: woodworking, clothing, dairy foods, horse science,

gardening, public speaking, conservation, photography, leadership, petroleum power, health, nutrition, home management, agriculture, electricity, and consumer education.

The purpose of the projects is to develop leadership talents and to help participants work toward the broad objectives of character development and effective citizenship.

Award winners must also exhibit knowledge and skills in their specific project areas. During their week in Chicago, the Delaware 4-

H'ers will join about 1600 other delegates from all parts of the country. During the National Congress they will participate in recreational activities and meetings, and hear nationally-known speakers. The awards and trips are provided by local and national sponsors.

Food stamp survey now in print

WASHINGTON, D.C. - Assistant Secretary Carol Tucker Foreman recently announced publication of the U.S. Department of Agriculture's second annual survey of the food stamp population, "Characteristics of Food Stamp Households, September 1976."

This survey is the Department's major source of information about persons participating in the food stamp program. As such, it is the basis on which the Department evaluates the effects of various food stamp policy options.

Demographic data for the study came from the case files of households receiving food stamps during the month of September 1976. The study indicates that almost 60 per cent of food stamp participants are children under age 14, elderly, or disabled. That percentage, plus the percentages of those who must stay at home to care for children and those who already are fully employed, accounts for the fact that only 15 per cent of persons heading food stamp

households are without jobs but are considered employable.

From the 1975 to the 1976 survey, participation in the food stamp program dropped by over 200,000 households (approximately 1.5 million persons). The number of households headed by males dropped by 12 per cent. In September 1976, 81 per cent of all households were below the poverty level income.

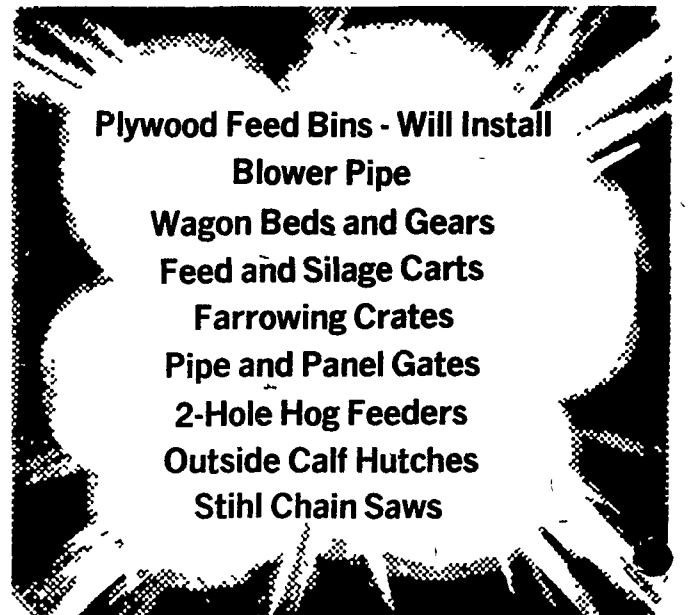
The average gross income of food stamp participants increased only about one per cent from 1975 to 1976, reflecting greater participation of smaller households with less income and decreased participation by households with higher incomes. Gross incomes of food stamp participants in the New England states were the highest in the country, averaging 47 per cent higher than those in the southwest region. Participants in the southwestern states had the lowest average gross incomes.

The average bonus per person per month increased

by about \$1.00 from 1975 to 1976. In September 1976, the purchase requirements of participating households varied from 3.8 per cent of gross monthly income to 26.4 per cent. The overall average monthly payment was \$57.

These facts plus other information are all con-

tained in "Characteristics of Food Stamp Households, September 1976." Persons interested in obtaining copies of the publication can do so by writing the Food Stamp Division, Food and Nutrition Service, U.S. Department of Agriculture, Washington, D.C. 20250.



Plywood Feed Bins - Will Install
Blower Pipe
Wagon Beds and Gears
Feed and Silage Carts
Farrowing Crates
Pipe and Panel Gates
2-Hole Hog Feeders
Outside Calf Hutches
Stihl Chain Saws

STOLTZFUS WOODWORK

RD Gap, PA Box 183
1 Mile North Rt. 897 From Gap

FOOD FOR THOUGHT:

QUALITY PAYS OFF

Smart Egg Men

Depend On High Quality.

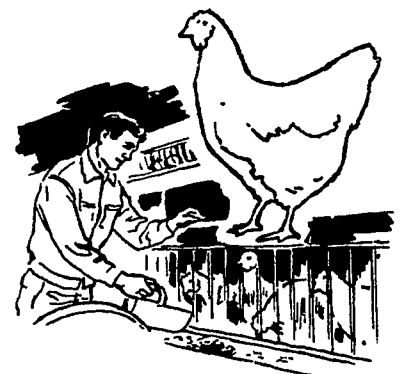
FLORIN LA-MOR FEEDS

20% - 19% - 18% - 17% - 16%

*** Good Feed Conversion**

*** Free Flowing**

*** High Quality Eggs**



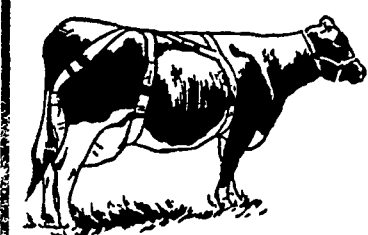
WOLGEMUTH BROS., INC.

MOUNT JOY, PA. PHONE 653-1451

DEPEND ON US . . . FOR ALL YOUR FEED NEEDS.



BAYMIX lets you sell your milk while you worm



SUPPORT YOUR COWS! WITH A

TAMM UDDER SUPPORT

* CATTLE & HOG MINERALS

* CUSTOM CANVASS WORK

AARON S. GROFF & SON

FARM & DAIRY STORE

RD3, Ephrata, PA 17522 (Hinkletown) Ph 717-354-4631

Store Hours: 7 A M to 9 P M

Closed Tues, Wed & Sat at 5:30 P M