

Livestock market and auction news

Martinsburg Auction

Martinsburg, Pa.
November 14, 1977

CATTLE 471. Compared with last Monday's market, slaughter steers steady to 25 cents higher. Slaughter cows mostly steady to 50 cents lower. Choice slaughter steers 40.50-43.25, Good 37.50-40.00, Standard 34.00-37.00, Utility 28.00-31.00. Choice slaughter heifers 37.50-40.50, Good 33.50-35.50, Standard 29.50-33.00, Utility 25.00-30.00. Utility & Commercial slaughter cows 24.75-27.85, couple to 28.00, Cutters 23.00-25.50, Canner & Low Cutter 22.00-24.00, Shells down to 18.00. Good slaughter bullocks 33.50-37.00, Standard 30.50-34.00, Utility 26.50-29.00. Yield Grade #1 1000-2000 lbs. slaughter bulls

34.50-37.00; yield grade #2 900-1600 lbs. 31.00-34.00. Few Medium & Good 400-600 lbs. feeder steers 28.00-35.00; few Medium & Good 400-600 lbs. 21.50-26.50.

CALVES 360. Vealers strong to \$3 higher. Choice vealers 67.00-73.50, Good 58.00-68.00, Standard & Good 110-130 lbs. 52.00-62.00, 90-110 lbs. 49.00-55.00, Standard 70-90 lbs. 36.00-48.00. Farm calves, holstein bulls 90-120 lbs. 49.50-55.50; holstein heifers 85-120 lbs. 44.00-58.00.

HOGS 335. Barrows & gilts steady to 50 cents lower, spots \$1.50 lower US No.1-2 200-240 lbs. barrows & gilts 39.25-40.75, No. 1-3 200-250 lbs. 38.25-39.50, No. 2-3 195-230 lbs. 38.00-39.00, No. 1-3 145-190 lbs. 31.00-34.00. US No. 1-3 300-500 lbs. sows 34.00-37.00, No. 2-3 300-600

lbs. 32.00-34.00. Boars 22.00-38.00.

FEEDER PIGS 61. US No. 1-3 20-35 lbs. feeder pigs 10.00-22.00 per head, No. 1-3 35-50 lbs. 12.50-28.00 per head
SHEEP 22. Good & Choice 85-100 lbs. wooled slaughter lambs 46.00-52.00.

St. Louis Cattle

November 17, 1977
National Stockyards

Receipts this week 8,100; Week ago 9,700; Year ago 8,900

As compared to the previous week close, Slaughter Steers fully steady. Slaughter Heifers steady to 25 higher. Cows and Bulls 50-1.00 lower. Supply Mainly Choice and Mixed Good and Choice 2-4

1000-1200 lb. Steers with only a few loads Choice and Prime. Heifer quality much improved with several loads Choice and Prime. Around 20 per cent Heifers and 25 per cent Cows.

SLAUGHTER STEERS: Mixed Choice and Prime 2-4 1000-1225 lbs. 41.50-42.00, Load 1125 lbs. 42.50. Choice 2-4 975-1250 lbs. 40.00-41.75, Mostly 40.50-41.50. Mixed Good and Choice 2-4 900-1175 lbs. 39.00-40.50. Mixed Good and Choice 2-3 1050-1225 lb. Holsteins 36.00-36.50. Good 2-3 900-1175 lbs. 35.50-39.00. Standard to Good 2-3 1000-1250 lbs. Holsteins 34.0-36.00, Few Standard 32.00-34.00.

SLAUGHTER HEIFERS: Mixed Choice and Prime 2-4 875-1050 lbs. 39.50-40.00, One Load 40.25. Choice 2-4 800-1050 lbs. 38.50-39.75. Mixed Good and Choice 2-3 700-950 lbs. 37.00-38.50. Good 2-3 700-950 lbs. 33.50-37.00.

COWS: Utility and Commercial 2-4 22.50-24.50, Closing 22.50-24.00. Boning Utility 1-2 24.00-25.00, Closing Sales 24.00-24.50. Cutter 1-2 20.50-24.00, Mostly Closing Sales 20.50-23.00. Canner and Low Cutter 1-2 17.50-21.00, Closing 17.50-20.50.

BULLS: YG 1-2 1050-1600 lbs. 25.50-29.00, Closing Sales 25.50-28.50. Few YG 1 1700-1925 lbs. 29.00-30.00, Closing at 29.00.

FEEDERS: including around 2,500 at regular Thursday auction. Feeder Steers firm to 1.00 higher, Feeder Heifers firm to 2.00 higher, most advance on choice. Demand Moderate to Good. Supply Mainly Choice 350-700 lb. Steers and Choice and Mixed Good and Choice 300-700 lb. Heifers.

FEEDER STEERS:

Choice 350-500 lbs. 38.50-42.50, Lot high choice and Prime 469 lbs. 43.25; Choice 500-600 lbs. 39.00-41.75; 600-700 lbs. 38.25-40.75; 800-950 lbs. 36.75-39.25. Good 300-550 lbs. 33.00-37.00, Couple Lots Standard and Good 625-835 lb. Holsteins 31.25-31.75.

FEEDER HEIFERS: Choice 400-500 lbs. 31.00-34.50; 500-700 lbs. 31.00-33.50. Mixed Good and Choice 325-550 lbs. 29.00-31.50. Good 300-550 lbs. 26.50-29.00.

PAIRS: Load Good and Choice Stock Cow and Calf Pairs 266.00. per Pair.

Omaha Cattle

Omaha, Neb.

November 17, 1977

-Cattle-Compared with previous week's close-

Closing prices on Slaughter Steers were mostly 50C lower instances 75C off. Heifers Closed 25-50C lower. Cows were 50-1.50 lower and Bulls 1.00-2.00 lower.

Four day receipts 13,900 as compared 15,400 previous week and 16,100 a year ago. Fed Cattle prices were forced downward in pre-Thanksgiving trading as movement of carcass beef at the wholesale level was generally slow in the face of stiff competition from poultry products for the approaching holiday. Live trading was often slow as most interests were competitive only for minimum requirements and some acquired a moderate portion of their volume from other areas. Much of the steer and Heifer supply was good to

average-choice and some carried a moderate amount of mud as the result of recent rains. Slaughter Steers made up approximately 27 PCT of the weekly total and Heifers 28 PCT. Cows contributed 7 PCT and Feeders 35 PCT.

STEERS: Three Loads choice and Prime 3-4 1142-1317 lbs. 42.25-42.50 early, Six Loads same grade 3-4 1107-1230 lbs. 42.00 later. Choice 2-4 975-1250 lbs closed 41.00-42.00. Mixed Good and Choice 950-1225 lbs. 40.00-41.00. Good 2-3 950-1350 lbs. 37.00-40.00. Standard and Good 2-3 35.00-36.00.

Average of LS-214, Detailed Quotations, for choice 900-1100 lb. Steers this week 41.42, Choice 1100-1300 lbs. 41.55. Average weight steers first three days 1110 lbs as compared 1110 lbs. previous week. Average weight heifers first three days 972 lbs as compared 976 lbs. previous week.

HEIFERS: load and part load choice and prime 3-4 1023-1044 lbs. 41.50, Several Loads same grade 3-4 951-1039 lbs. 41.00-41.25. Choice 2-4 875-1050 lbs. 39.50-40.75. Mixed Good and Choice 2-3 875-1000 lbs. 38.25-39.50. Good 2-3 34.50-38.00 Standard and Good 2-3 32.00-33.50.

COWS: Utility and Commercial 2-4 22.50-23.50, Few 24.00. Canner and Cutter 19.50-22.50.

BULLS: 1-2 1400-1800 lbs. 28.00-30.00.

Oklahoma Cattle

Oklahoma City

November 17, 1977

Estimated receipts 11,000; same day last week 6463.

Active, feeder calves under 500 lb. generally steady; feeder steers and heifers 500-700 lb. strong to 1.00 higher, offerings over 700 lb. scarce; majority receipts mixed Good and Choice and Choice 300-700 lb. feeder steers and heifers; fairly large attendance buyers..

Demand very good for offerings suitable for grazing wheat.

FEEDER STEERS:
(Continued on Page 12)

USED GRAIN DRYERS

- 1 MC Model 600E Continuous Flow Dryer w/2-20 H.P. 3 phase motors, complete with 800 Bushel wet holding tank and fill augers; excellent condition, \$10,900.
- 1 MC Model 400 PTO Drive Continuous Flow Dryer \$5,500.
- 1 Farm Fans, 10 to 12 H.P., Centrifugal fan with heater unit (Model F.F.C. 1024/single phase) \$1,350

Transport Auger

- 1 used New Idea, 8 inch by 51 ft. PTO drive



LOUCKS

GRAIN EQUIPMENT INC.

Box 216, RD 12, York, PA. 17406

717-755-2690

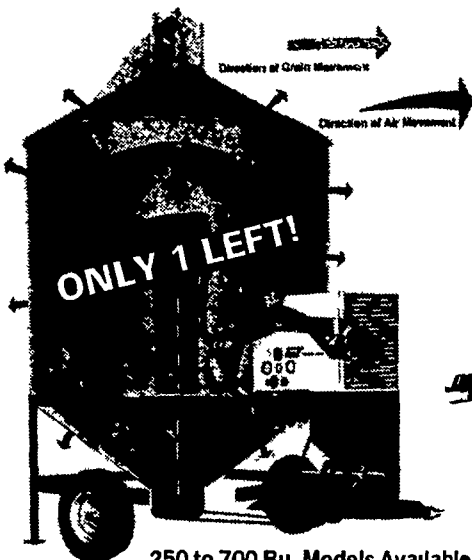


IS YOURS FOR BETTER MILKING



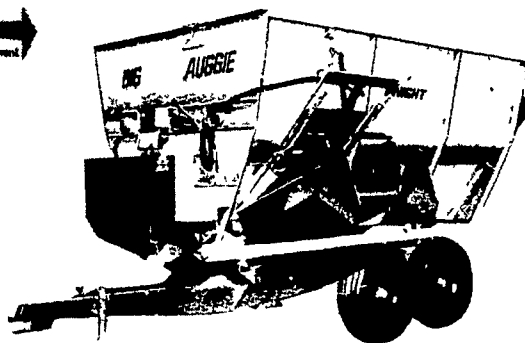
TOX-O-WIK

RECIRCULATING GRAIN DRYERS ARE THE ANSWER FOR AN INEXPENSIVE SET-UP



250 to 700 Bu. Models Available

"AUGGIE" SILAGE MIXERS
MODELS AVAILABLE TO SUIT YOUR NEEDS



- ★ LITTLE AUGGIE 9 - 170 CU. FT. CAP.
 - ★ BIG AUGGIE 12 - 280 CU. FT. CAP.
 - ★ BIG AUGGIE 14 - 320 CU. FT. CAP.
- TRUCK MOUNT AVAILABLE

SALES — INSTALLATION — SERVICE

SHENK'S FARM SERVICE

501 E. Woods Drive Lititz, Pa. 17543 Phone: 717-626-1151
Bulk Tanks & Therma • Stor

After 5 P.M. Call Titus Burkholder 717-859-1620

Our Service Trucks Are Radio Dispatched 24 HR. SERVICE OFFERED

L & M FUR & WOOLEN ENTERPRISE



Quality Electrified Mountons & Furs
Tannery Direct Dist Wholesale & Retail
Check our Quality, Price & Services!

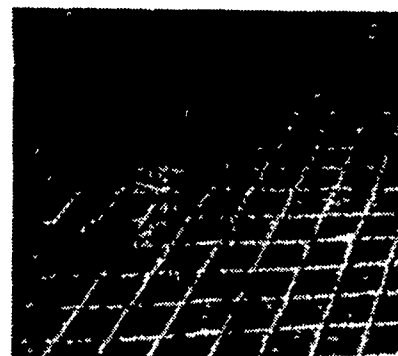
- Woolen Hosp Pads - Natural & All Colors
- Pa Largest Selection of Woolen Products
- Sheepskin Coats at Reasonable Prices
- See Us At Meadowbrook Market in Leola

117 W Summit St., Mohnnton, Pa
215-777-2465

Hours. Mon - Fri 9-8:30; Sat 9-5

DAIRYMEN: CONCRETE-GROOVING Cuts Grooves in Concrete Floors

- PREVENT SPLITS
- INSTALL IN HOLDING AREAS
- IMPROVE HEAT DETECTION
- INSTALL IN FEEDING AREAS



Grooves 1/2" wide x 1/4" deep - 4" apart.

- PREVENT BROKEN LEGS
- ELIMINATE COWS SKIDDING
- PREVENT CRACKED CONCRETE
- INSTALL IN ALLEYS

Why not join the increasing number of dairymen throughout the Eastern states who now receive profitable benefits from this service.

CONTACT US TODAY!

CONCRETE GROOVING, INC.

Rt. 2 Box 1
Harrisonburg, Va. 22801
Henry Showalter
703-434-4298

Penna. Area
717-733-3903
after 4:30 P.M.