

Grassland travelers recall highs of K.C. trip

By DIETER KRIEG
NEW HOLLAND --
"Everyone who attended the Kansas City Convention at its 50th year had a great time and I'm proud to have been a part of the celebration," says Maxine Messner in a review of the recent trip.

The Grassland FFA Chapter, of which Maxine is a member, was represented

at the Golden Anniversary of the FFA with 12 students from the eastern Lancaster County area. Leaving Garden Spot High School at 6 a.m. on Nov. 5, the group spent nine days away from the usual activities at home and in school.

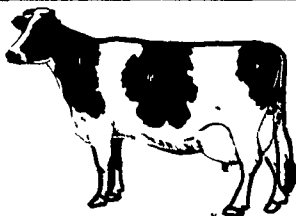
What did they think of their trip to Kansas City? To (Continued on Page 34)



Bob Lauffer, left, and Bob Woods, right, both vocation teachers at Garden Spot High School, accompanied a dozen FFA'ers from their chapter to the 50th Anniversary Convention of the National FFA. The students are, from left to right, front row: Maxine Messner, Eileen Messner, Clifford D.

Martin, Linda Martin, Duane Weber, Brian Hess and Cliff R. Martin. Back row, left to right: J.M. Fink, Pennsylvania regional program coordinator, Tim Sheaffer, Craig Sheaffer, Brian Wise, Ken Wanner. Also at Kansas City, but not present for the picture was Clifford Hurst.

NEW HOLLAND SALES STABLES



WEDNESDAY, NOVEMBER 23, 1977

12:30 P.M. Sharp

Two complete herd dispersals, one herd of 100 head of Holsteins from Eastern shore of Maryland, 65 cows in all stages of production. Will be checked by the Vet for pregnancy. 20 springers & 15 cows strictly fresh. Several Thanksgiving Turkeys will be given with this herd.

H.D. Matz is consigning a load of fresh & springing cows, several Registered.

Kelly Bowser will have one load of springing & fresh cows and a complete herd of 32 head from Butler Co.

Norman Kolb will have a load of New York springers & fresh cows, a few Registered with records.

NEW HOLLAND SALES STABLES, INC.

Abe Diffenbach, Mgr.

PUBLIC SALE

OF VALUABLE ANTIQUES & HOUSEHOLD GOODS

Moving from my farm home where I have resided for the past 55 years, I will sell on the premises along Rt. #194, between Keymar & Taneytown, Carroll County, Maryland on:

SAT., NOVEMBER 26, 1977

At 10 A.M. the following:

Wal. Vict. dbl. dr. wardrobe, oak roll top desk w/"C" roll, 3 pc. oak bedroom suite, oak mirrored buffet, sq. oak ext. table, kitchen safe, 2 pc. kitchen cabinet, softwood wash stand, dry sink, oak ice box, M.T. parlor stand, BUTLERS DESK, early wal. cradle, oak larkins desk & book case comb.; spinet desk, brass bed, needs repairs; REGINA MUSIC BOX w/5 tin disc's, plays perfect; lge. Vict. hall rack w/marble shelf & mirror, round oak pedestal table, 5 pc. late Vict. parlor suite, VOUGH UPRIGHT PIANO, good; B&C piano stool, 2 door oak wardrobe, lge. old kitchen cupboard, wal. swivel chair, oak dresser & wash stands, open wash stand, 2 rope beds, Jenny Lind spool bed, clothes tree, flour chest, WURLITZER ELEC. ORGAN, 4 I.C. chairs, 6 leather seat oak din. room chairs, wicker Victorian baby buggy, wicker rocker & chairs, oak curved glass china closet, B&C oak stand, 7 pc. din. room suite, ca. 1940; Kalmazoo cook stove, modern corner cupboard, Hobart elec. store size coffee grinder w/orig. red paint, copper apple butter kettle, morris chair, maple tea cart, sleigh bed, orig. cherry boy & girl, late Vict. love seat, oak slant front desk, crosley tall case comb. radio & clock, ca. 1925; D.H. sewing machine, set of 6 solid bottom oak kitchen chairs, 7 pc. maple dinette set, softwood wash stand, D.L. table, mounted deer head, regulator wall clock, banjo clock, oak shelf clock, heatrola, sm. oil heater, KELVINATOR FROST FREE REFG., Hot Point range, I.N.H. chest type freezer, victrola round top trunk, odd chairs & rockers, oak wall phone, iron baby crib, orig. red satin glass bulls eye G.W.W. lamp, G.W.W. lamp w/painted globes, lamp w/art glass shade & prisms, I.S. china, carnival glass, depression glass, 7 pc. flowered toilet set, S.T. creamer, pressed glass, choc. set, copper lustre pitcher, cherry seeder, old chip beef slicer, adv. tins & store boxes, corn dryer, C.I. cook pot, lge. tin dough pan, tin bread maker, milk cans, crocks & jugs, blacksmith forge, C.C. saw, garden seeder, fodder chopper, corn sheller, barshear plow, old feed chest, sm. tools, pictures & frames, many unlisted items for full day sale.

TERMS: Cash on day of sale. Not responsible for any accidents on premises. Sale in tent. Bring your own folding chair. Sorry, no inspection until day of sale.

Mrs. Alice M. Reinsider

Austin Bohn, Auctioneer

Ph: 775-7607

Jacob Altvater, Clerk

(LUNCH RIGHTS RESERVED)

MACHUGA

FARM SALE

Rte. 226 at Bradford, N.Y., 15 mi. from Bath or Corning, off Rte. 17 Expressway.

TUES., NOV. 19th

at 10 A.M.

51 good Holsteins (35 cows, mainly due in next 60 days, bal. hfrs.). An exceptionally outstanding line of new and nearly-new equipment!! JD items: 4 tractors (4230D, 3020, 620, & 320), 3500 chopper (2-row corn & p.u.), new 336 baler, 800 s.p. windrower, 4-row fiberglass planter w/liquid fert., 17 drill, 20' trans. drag, 5-b. plow, 700 grinder-mixer, 4 s.u. wagons (125 w/roof & 115, two 214's - 1 w/roof). NI 327 new 2-row picker. MH Super 92 s.p. 14' combine, Badger 200 bu. spreader, gravity box, 4 flat bed wagons, and much more!! Excellent C600 Ford short-nose hoist truck w/14' body. Bulk tank, dump station, 2,000 bales 1st & 2nd cutting hay, 700 bales straw, 30T. ear corn, 200T. silage, etc. Small items sell first, so come early!! For full list or info, contact Rumsey Sales, Bath, N.Y. (607-776-3478).

Owned by

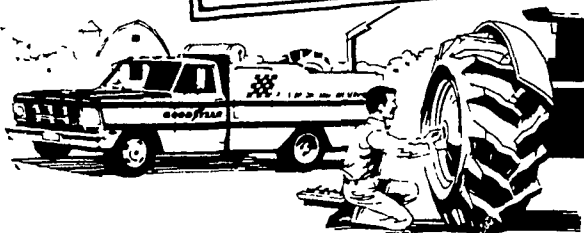
Mr. & Mrs. Richard Machuga

GOODYEAR

PIT STOP

ON-THE-FARM TIRE SERVICE

JUST CALL 299-3794



• Flats repaired or replaced promptly • Tube valves replaced • Tires liquid-filled • Tire sales & service for every truck tractor and auto on your farm!

PHILIP LEBZELTER & SON CO.

(Independent Goodyear Dealer)

1062 Manheim Pike, Lancaster, PA 17604

FARM EQUIPMENT

USED EQUIPMENT

- Ford 602 2-Row Mtd. Picker
- Oliver 1650
- Case 950 Windrower
- JD 18 Picker
- Int. 1456 4-Wh. Drive Tractor
- Case 1740 Uniloader
- NH PTO 77 Baler
- Case V-12 Shredder
- MF 414 Plow
- Easy-Flo Cutditioner
- NI Unisystem - 705 Tractor w/727 picker
- NI Unisystem - 702 Tractor, 710 Combine & 760 Harvester
- 320 Hesston Windrower, Self Propelled
- Case 5-Bot. Plow, Semi-Mtd.
- 6 Bottom MF Plow
- MF 5-Bot Plow, Semi-Mtd.
- JD 40 Tractor with Cult.
- DC Case Tractor
- Case 1537 Uniloader
- Case 32 ft. 6 in. Auger
- MF Flail Chopper
- Wood Bros., 1 Row Picker
- MF 1150
- JD 227 Mtd. Corn Picker
- Colby 2 beater Forage Box w. Running Gear
- N.I. Loader
- Oliver Loader
- Case 555 Windrower
- Ford 4-Row Corn Planter
- John Deere 2-Row Planter
- John Deere MT
- Hesston Stakhand 30
- 990 David Brown
- Selectomatic 990 David Brown
- JD 4-Bot. Trailer Plow

HARVESTERS

- IH 55 Harvester
- Case 300 Harvester

★ 8 Used Spreaders to Pick From! ★

Dunham - Lehr
CHISEL PLOWS
AT
SPECIAL PRICE



ZIMMERMAN'S FARM SERVICE

Bethel, Pa
Phone 717-933-4114

USED EQUIPMENT

- J.D. A Tractor
- J.D. 2020 Diesel
- J.D. 4020 Diesel
- J.D. 4020, Powershift and Roll Guard
- J.D. 2630 Diesel
- A.C. B Tractor w-cultivators
- Farmall Super C w-loader & Equip.
- Fox Chopper w-3-row head
- M.F. 410 Diesel Combine w-Grain Head
- J.D. 14T, 24T & 224T Balers
- N.H. 275 Baler w/kicker
- Hesston 56 Round Baler
- Hesston 10' Mower Conditioner
- J.D. 1640 Disk 12'6"
- J.D. AW Disk 11'
- J.D. 15' Roller Harrow
- J.D. F145 4-16" Semi-mtd. Plow

WENGER
IMPLEMENT, INC.
The Buck, PA
717-284-4141



USED EQUIPMENT

- Farmall C w-cult.
- Farmall MD
- Farmall H
- JD A
- JD B
- MH 44
- MH 44 w-loader
- Ontario Grain Drills
- JD Grain Drills
- AC WD 45 Tractor
- MF 65
- MF 510 Combine
- MH 33 Tractor
- MF 35D
- MF Cornheads
- MF 410 Combine
- MF Snowblowers

NEW EQUIPMENT

- MF 230 Tractor
 - MF 265 Tractor
 - MF 1085 Tractor
 - NI Cornpickers
 - MF 245 Tractor
 - Wagons with Flats
- N. H. FLICKER & SONS, INC.**
Box 68
Maxatawny, Pa. 19538
215-683-7252