

ANNUAL THANKSGIVING DAIRY SALE

Friday, November 25, 1977
12:00 Noon

Selling at Art Kling's Dairy Sale Barn, located
12 miles N. of Carlisle, 2½ miles N.E. of Lan-
disburg, Perry Co., along rt. 74:

60 Top Holsteins

Load of Fancy P.B. Cattle from Cortland, N.Y.
Featuring such breeding as: Double Triune, Hagen,
Astronaut, Rora Elevation, Willow

10 Top Grade 1st Calf Heifers from one herd - Nearly
all Fresh or Very Close

Herd of 25 cows from Huntington County Nice Cattle
that are milking Good!

Few Heifer Calves Health Charts

Owner

V. ART KLING

Landisburg, Pa. 717-789-3883

Glick, Auct.

Naugle, Ped.

Free lunch will be served at 11:00 A.M. -

Bring the Family

Door Prizes

Door Prizes

PUBLIC SALE

FARM EQUIPMENT
HOLSTEIN COWS & HEIFERS
FEEDER STEERS
ANTIQUES, Etc.
Thanksgiving Day,
NOVEMBER 24, 1977

TIME: 11:45 A.M. PROMPT

Due to quitting farming will have Public Sale
on the premises, located in York County, 4 miles
south of York, Pa., on Route #111, thence turn
west 1 mile at Reynolds Mill Road, then turn
north onto Overlook Drive, first farm, Sale Signs
posted.

3 TRACTORS

Farmall 350 Diesel; W C Allis Chalmers & cults; D 10
Allis Chalmers & cults; Massey Harris 60 10-ft. self
propelled combine, in nice shape; McCormick 510 16
double disc grain drill, like new; good Allis Chalmers 2-
row corn planter; New Idea 135-bu. manure spreader,
p.t.o., like new; New Idea 2-row semi-mt. trail corn
picker; McCurdy gravity flow box on Allis Chalmers
chassis; New Idea rubber-tire wagon w/tight bottom
box; Int. Harvester McCormick rubber-tire wagon
w/metal box; iron wheel wagon w/grease fittings; I.H.
McCormick No. 33A loader w/dirt bucket used very
little; Int. 7' mower, 2 pt., PTO; McD. roll bar rake;
C.H. Grimm 4-bar hay tedder, p.t.o.; Smoker 24'
hammer mill; I.H. McCormick 3-14" plow, 2 pt. M M 2-
14" plow on rubber; McD 18" disc harrow; tractor 35
spring tooth shovel harrow; 9' single roll packer; 60
tooth peg harrow; 2 pt. rear carrier; snow blade for
350; Grove snow blower, 3-pt.; rear ground scoop;
Fairbanks platform scales; 30' wood shifting ladder;
electric chain saw 14" blade; grass seeder; 150-gal.
gas tank; burlap bags; shovel plow; potato plow
w/iron rods; 3 aluminum shovels; 3 iron hog troughs;
10 2"x12"x10" oak plank 18 pieces 16' rooders; 2 hog
gallows; hog scalding trough; 3 wooden barrels; good
13-6-38 tractor tire; rope & tackle; wagon load of small
farm tools.

FEED 280 Bushels of ear corn

6 HEAD of HOLSTEINS

Health Chart

2 cows, 1 fresh w/3rd calf, other due Feb.; 4 heifers 3
mo. to 1 yr.; Surge S.P. 11 milker pump; Surge milker
unit; 485-lb. cans;

14 HEAD of VERY NICE STEERS

500 lbs. to 900 lbs.

Charolais, Hereford, Angus, and Holstein
ANTIQUES, Etc.

Empire jelly cupboard; very nice oak side board
w/carvings; wood butter churn; child rocker; oak
chairs; wood measure; 2 copper wash boilers; 2 milk
stools; wood box; glass oil lamps; oil heater; picture
frames; wood straw fork; 2 school desks; 12 doz. egg
crates; 250-lb. milk cans; 25 1-gal., 3-gal., 4-gal., 5-gal.,
6-gal., 8-gal. stone crocks; straw knife; furrow plow;
hard to find horse-drawn fifth chain hook-up complete;
child chest of drawers; youth crib; adding machine;
canning jars; iron kettle & stand; iron pot; many items
not mentioned. A real lot of farm equipment.

LUNCH AT SALE

NOT RESPONSIBLE FOR ACCIDENTS

ORDER of SALE - Wagon, Antiques, Equipt, Corn,
Cattle.

TERMS: Cash or approved check

Owner

CHAUNCEY E. LENTZ,

R.D. #8, York, Pa.

Auctioneer

Clair R. Slaybaugh

Idaville, Pa., Phone 677-7479

Sale reports

HUNTERS SALE BARN, INC. held their weekly sale
November 14 at Rising Sun,
Maryland.

STEERS: Good to Choice
1100-1240 lb. 34.00-36.75;
Standard to Good 900-1080 lb.
33.25-24.00.

HEIFERS: High Choice
29.50-31.50; Good to Choice
26.50-29.00; Other 24.00-25.75.

FEEDER STEERS: Good
to Choice 36.00-38.50;
Standard to Good 32.00-35.50;
Other 28.00-31.00.

BULLS: 840 lb. 29.00; 820
lb. 28.00.

COWS: High Choice to
Prime 26.25-27.25; Good to
Standard 25.25-26.50; Utility
24.00-25.25; Cutters 22.50-
23.75; Canners 20.00-21.75.

CALVES: High to Choice
140-180 lb. 58.00-66.00; Good

to Choice 120-140 lb. 44.00-
52.00, few 55.00-57.00;
Standard to Good 90-110 lb.
34.00-39.00; Utility 70-80 lb.
32.00-38.00, few 39.00-40.00;
Low Utility 60-75 lb. 23.00-
31.00.

FEEDER PIGS \$18 to \$23
by head.

SOWS: 27.00-29.00.

BOARS: 25.50-27.00.

GOATS: Billies \$22 to \$27
by head; Nannies \$25 to \$30
by head.

Sale Mgr. and Auctioneer,
Norman E. Hunter, Pres.

A Virginia herd dispersal
was held November 11 at
Shady Lane Dairy Sales, ¼
mile west of Quarryville, Pa.

The high cow sold for \$1400
and the low cow brought
\$250. The average of the 117

herd of grade and registered
Holstein animals was \$600.

Sale conducted by David
L. Fite & Glenn D. Fite.

A Public Sale of farm real
estate and a brick home was
held November 12 for the
estate of Elsie E. Bear, 5
miles south of Carlisle, Pa.

The 83 acre farm in
Cumberland County con-
sisted of a large 2½ story
brick house, stone barn and
silo and sold for \$197,500. The
all brick ranch home on .628
acre of land was sold for
\$39,500.

Ben Rowe and Bill Rowe
were the auctioneers.

A Public Auction was held
November 12 by Lizzie B.
Brubaker, in the village of
Clay, Lanc. Co., Pa. and it
was well attended.

The two story mason stone
house with electric heat was
sold for \$33,900.

Other items sold included:
Ironstone Teapot \$50,
German serving dishes \$40
to \$50, Coverlet \$75, water
bench \$80, Amber finger
lamp \$40, Coffee Grinder
\$22.50, and General Electric
stove \$165.

Wilbur H. Hosler was the
auctioneer.

(Continued on Page 122)

Craft lessons set for Dec.

PARKESBURG - The
Chester County Cooperative
Extension Service will
present a mini craft
workshop on December 5
from 1 to 2 p.m. at the
Parkesburg library. Dorothy
Daily and Jan Renner invite
you to learn to make
Christmas items, childrens
gifts, and adult items for

your friends and family.
Registration may be made
by calling the library at 215-
857-3345. If you choose to
make one of the crafts for
yourself, a 50 cent donation
will be collected to cover the
cost.

For more information, call
the Extension Service at 215-
696-3500.

COMPLETE HOLSTEIN DISPERSAL

MILKING EQUIPMENT, Etc.

Saturday, November 26, 1977

TIME: 12:00 NOON PROMPT

Due to having sold the farm, located in York
County 1 mile north of Dover, Pa., along Route
#74. Watch for Sale Sign.

11 Registered Holsteins - 30 Grades
Accredited Certified

30 Day Health Tests - Pregnancy Checked

29 Cows and Heifers in milk, 7 recently fresh or close,
9 due Dec., Jan., and Feb., others various stages of
lactation; 4 bred heifers, 8 open heifers from 4 months
to 14 months old; cows with size and type. Herd sired
by A.B.C. Sires and Herdsman Sire, heifers being in
good size.

EQUIPMENT

Sirge Alamo 5-unit vacuum milker pump; 4 Surge 50-
lb. milker units; twin stainless steel wash vats;
stainless steel buckets and strainer; Stewart clipper; 2
butcher kettles; scalding trough.

Owner

SAM PAUL J. STARE,

5350 Carlisle Road

Dvoer, Pa.

Auctioneer

Clair R. Slaybaugh

Idaville, Pa., Phone 677-7479

C.L. Jacobs, Clerk

PUBLIC SALE

VALUABLE 59 ACRE FARM
Saturday, November 26, 1977

At 2 P.M.

Located along Main Street, ¼ mile east of
Terre Hill. Between Terre Hill and Rt. 625.

Valuable Farm Containing 59 Acres
(More or Less)

Some meadow and wood land upon which is erected
A Stone Dwelling

Kitchen, three rooms and bath on first floor, 5
bedrooms on second floor. Well and pressure system.
Oil fired baseboard hot water heat. S.W. hookup,
heating system only one year old.

Storm doors and windows, full basement, insulated
attic, wooden windows and cornish covered with
aluminum. New roof on house.

Other buildings consist of

Large Bank Barn & Tobacco Shed

Property has road frontage on both sides of road.
Land in high state of cultivation, also ideal for
development.

10% down day of sale.

For inspection of property by appointment call 354-
8981.

Property to be sold at 2 P.M.

Terms By

LOUELLA & SAMUEL W. GROFF

Executor for Estate of Martha M. Bixler

Auctioneers

Lester O. Weaver

Barry D. Wanger

Attorney

Eric S. Coots

Not Responsible For Accidents

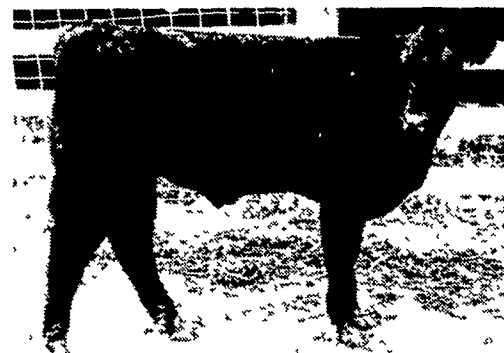
OCTORARO FARM CLUB CALF SALE

SATURDAY, NOVEMBER 26, 1977

12 Noon



Chianina-Angus quarterblood. Long,
tall, stylish and meaty.



Maine Anjou-Angus halfblood fresh
out of Montana. Complete kind of calf.

Sale to be held at Octoraro Farm, Lees
Bridge, RD2, Nottingham, PA. Located 6 miles
west of Nottingham, 3 miles north of Rising
Sun, MD, 4 miles South of Little Britain. Take
Rt. 272 south from Lancaster toward Not-
tingham, turn right at stop sign by Little Britain
School, go ¼ mile take first left and proceed
straight to Lees Bridge.

60 Head Top Quality Hand Picked 4-H and FFA
Steers. Will be prepriced and sold by silent auction.
Calves will weigh 400 - 600 lbs. and will consist of many
different breeds and crosses from which to choose. All
calves will have been weaned, vacc., wormed and
started on feed. Plan to be with us on sale day to select
your next years champions.

Sale by
SAM WYLIE

215-932-8923

Lunch Available

Free delivery in SE Pa.