



The 1977 Outstanding 4-H Boy and Girl awards in Montgomery County were presented by Maynard King, Executive Secretary to the Soil Conservation District to Jeff Craig, Trappe 4-H Club and Cindy Waltemyer, Keystone 4-H Dairy Club. In making the presentations at the annual 4-H Achievement Night, King, who represented the County Commissioners, recognized the many accomplishments and personal dedication of the recipients in the 4-H club program.

PUBLIC SALE

**OF LEBANON CO. FARM REAL ESTATE
HOGS, FARM EQUIPMENT,
AND HOUSEHOLD FURNISHINGS**

SATURDAY, NOVEMBER 19, 1977

Situated in Jackson Township, Lebanon County, Pennsylvania. Located along Mt. Zion Road. Two miles north of Myerstown. 1/2 mile west of Route 501.

REAL ESTATE

Consists of approximately fifty acres of gravel limestone soil. Contoured fields in high state of cultivation with approximately ten acres seeded barley.

Improvements thereon modern bi-level frame ranch dwelling. Top level: modern kitchen with dining area, living room, 3 bedrooms, full bath. Lower level: family room with fireplace, bedroom, 1/2 bath, laundry room, and one car garage. Central vacuum cleaner system. Electric heat. Wall to wall carpet. Air conditioner, electric range, refrigerator, automatic washer and dryer. Built in 1967, and in excellent state of repair.

Out buildings consist of 36' x 60' two story masonry block farrowing house, and feed room with 20' x 30' hog sty attached, having a concrete slatted floor and liquid manure pit.

36' x 60' masonry block hog finishing house, 24 pens, liquid manure pit, 10' x 28', and 12' x 18' feed rooms attached.

20' x 40' masonry block machine shed, 18' x 22' frame two car garage; out buildings in good state of repair. Drilled well with pressure water system. Water piped to necessary buildings.

180—HOGS—180

Yorkshire boar, Landrace boar, 19 bred York-Landrace cross sows and gilts. 160 head feeder pigs 30-150 lbs.

FARM EQUIPMENT

John Deere 2010 RC gas tractor, with hydraulic loader. Allis-Chalmers C tractor, Calimet 1500 gallon dual axle liquid tank spreader, McCormick field chopper, John Deere #18 single row cornpicker, John Deere #290 corn planter, Thomas ten disk grain drill, John Deere model R spreader, wagon with gravity bin, McCormick wagon gear, Bush Hog five foot three point rotary cutter, 24 foot bale elevator, Mohawk five foot chisel plow, John Deere two - 16" three point plow, John Deere three - 14" three point plow, John Deere KBA 28 disk harrow, John Deere KBA six foot disk harrow, nine foot cultipacker, two section peg tooth harrow, John Deere three point subsoiler, Grove seven foot three point blade, John Deere #43 corn sheller, one hole corn sheller, McCormick plate mill, three - 16 foot grain augers, cement mixer with motor, seed cleaner, six ton steel feed bin with auger, 7 farrowing crates, hog feeders, ten foot steel gate.

Aluminum 24 foot shifting ladder, 24 foot wood shifting ladder, 1/2 Horsepower air compressor, 1/2-1 1/2 horsepower motors, Lancaster chain saw, electric chan saw, Craftsman ten inch radial saw, Sears 6 1/2 inch power saw, 20 inch power mower, lawn cart, five bicycles, child's sleds, express wagon, vise, pipe cutters, threaders, plow shares, shins, landsides, electric cords, etc.

65 TON EAR CORN

1974 Dodge 300 one ton truck with ten foot stake body.

HOUSEHOLD FURNISHINGS

Nine piece dining room suite, six piece bedroom suite, Vinyl sofa bed, and chair, Gibson 20 cubic foot chest freezer, Westinghouse electric sewing machine, Vinyl reclining chair, two piece living room suite, two gooseneck rockers, maple bunk beds, child's bed, two chest of drawers, two children's cribs, shelf room divider, four end tables, German coffee table, German rocker, German baby coach, steel wall cabinets, base cabinet, utility cabinet, folding table, card table, and chairs, tilt stand, butterfly table, stands floor, and table lamps, clothes hamper, three cartons ceiling tile, fruit jars, houseplants, carpet, electric heater, baskets, oil lamps, Noritake China, Ironstone Willow-ware, cooking utensils, glassware, and numerous other items.

Sale To Commence At 9:30 A.M.

Real Estate Sale 1:30 P.M.

Inspection by appointment - Call 717-933-8443. Order of sale: Household, small tools, machinery, hogs.

Conditions by,
ROBERT W. DERR, Owner

Auct. Earl. S. Buffenmeyer
Clerks, Zug and Brandt
Attorney Henry J. Steiner

Refreshments Kutztown Fire Co.

Awards given

(Continued from Page 103)

Liana Haas, Douglasville; Ronald Heffner, Fleetwood; Sandy Kohl, Mohrsville; Randy Rabenold, Kutztown; and Glenn Yanos, Douglasville.

Terrance Hafer, Douglasville received a seventh year pin, Dennis Dietrich, Hamburg received his eight year pin and Ann Holcombe was awarded her ninth year pin.

Nine members of the Baby Beef Club will be showing their steers at the 1978

Pennsylvania Farm Show. They are: Dennis Dietrich, Liane Haas, Ronald Heffner, Randy Rabenold, Scott Rabenold, Sheri Steinhauer, Carol Strause, Mike Strause, and Glenn Yanos.

SMOKETOWN QUALITY DAIRY SALE



5 Miles West of Intercourse
5 Miles East of Lancaster, Route 340

WEDNESDAY, NOVEMBER 16, 1977

7:30 P.M.

**VILLA PINE FARM
HOLSTEIN SALE**

VICTOR ZIEGLER, LEBANON COUNTY

80 HEAD OF HIGH CLASS DAIRY COWS, hand picked out of 600 cows. These cows were all fresh within last few weeks. These cows are averaging between 70 & 75 lbs. of weighed milk per day. Most of these cows are 1st, 2nd & 3rd calf cows. They are not only young but also exceptionally well uddered & really milking. This is one of the best groups of cows that will ever be offered for public sale. Many years of hard work & planning have gone into developing this group of top cows. This is a rare opportunity for anyone to purchase some really good cattle.

If these cows are cared for in the right way they could make 15,000 to 20,000 lbs. milk. These cows are out of a free stall barn. The sale of these cows are due to labor conditions. These cows were selected by Carl and Jim Hostetter and Gordon Fritz. These cows were inoculated with Bar-4 in September.

Take a few hours out on Wednesday Evening and come to cowtown at Smoketown.

Cows milked at regular times. TB and Blood Tested within 30 days.

These cattle can be Inter-States
Cash or good check night of sale.

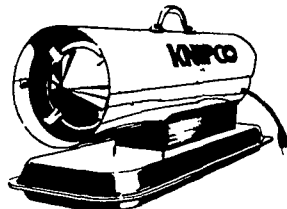
Sale by
**GORDON FRITZ &
CARL HOSTETTER**

Aucts.. Carl Diller and Paul Snyder

Lunch by Bird-in-Hand Auxiliary

Note - If you have a herd or any good cows to sell...don't hesitate to call me collect 717-393-0930, Gordon Fritz.

NEW!



Model F-30... the workshop warmer.

KNIPCO
portable heaters

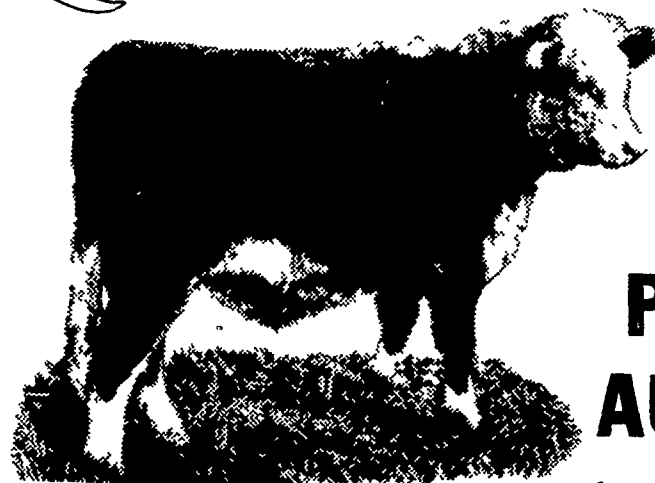
A low-cost heater that delivers fast, efficient heat Economical to operate Ideal for small areas, spot jobs, supplemental heat Quiet, dependable performance The same top quality features as the professional models

**FARMERSVILLE
EQUIPMENT,
INC.**

R.D. 4
EPHRATA, PA 17522



SHOW CALF SALE



**PUBLIC
AUCTION**

FRIDAY, NOVEMBER 25, 1977

7:30 P.M.

4-H & FFA Steer Calves at Shady Lane Dairy Sales
Located 1/4 mile west of Quarryville on Oak Bottom Rd.,
off Rt. 372.

We are offering hi-quality show prospects which include the following breeds and crosses: Chimiana, Hereford, Angus, Simmental, and Maina Anjou

These calves were selected from Lancaster, York, and Chester Co., plus the following states: PA, IN, MD, ND, SD, VA, WV

All calves will be prepriced There will be a free turkey given to the buyer of the highest priced calf. Also, there will be a drawing for a second turkey among buyers only.

Owners:

D. WALTER & M. MILLER

Auctioneer: K. Bradley

Clerk: D. Fite