

Farming's advances jeopardized

(Continued from Page 1)

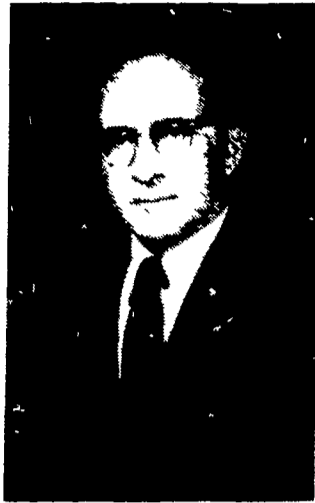
Service. According to Smith, 40 positions in Extension are currently vacant and can't be filled because money is not available.

Penn State University depends on state government appropriations for a large part of its expenses. Pennsylvania legislators have thus far appropriated no monies for Penn State as well as several other institutions due to the overall financial dilemma that exists in the Keystone State.

Smith expresses particular concern about Penn State's financial plight because of its functions as a land-grant university. "It was put there to help agriculture and to be of service to rural people as well as others," he explained.

Higher taxes may be the only solution to the budget impasse. Supporters of such a move say taxes will have to be raised sooner or later, so why not now, if that's what it takes to keep Penn State alive. Many legislators, and voters, however, are opposed to such a move.

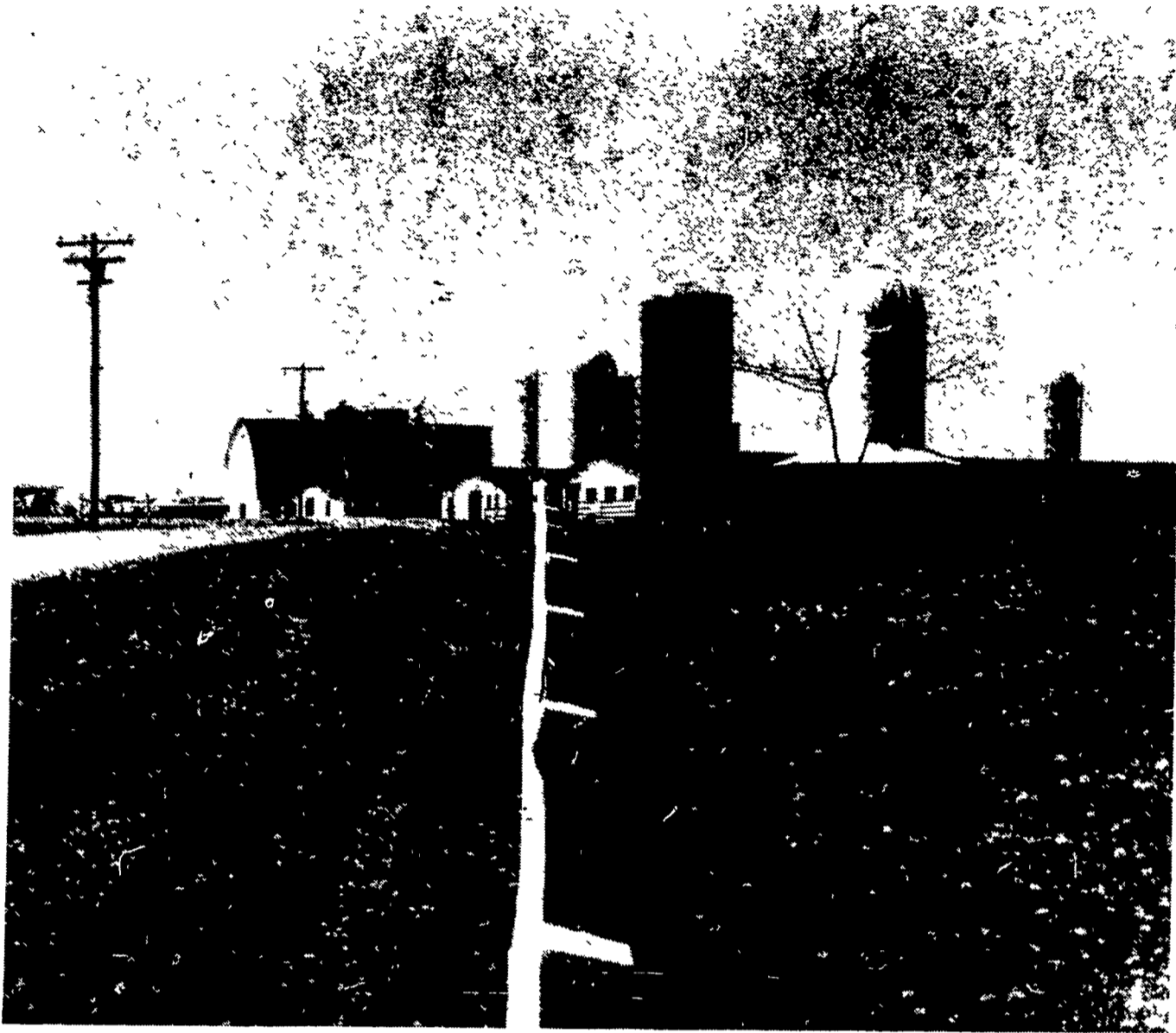
Smith figures it will take a big vote from the city to put Penn State back on its tracks and give farmers the kind of



Max Smith

land grant university they deserve. "My plea would be that urban folks realize how important agriculture is to the overall economy," Smith said. "It will take the urban vote to get agriculture back on its feet again. I would urge the people to get in contact with their local legislators and tell them how they feel about Penn State having to spend \$3000 per day for interest," the Extension agent concluded.

If money isn't soon forthcoming, it could end up that appropriated funds will have to be used up just to pay back loans, thus perpetuating a budget crisis.



Penn State's College of Agriculture, including invaluable research at facilities such as at the

Dairy Production Center, above, is being seriously hampered by lack of state funding.

Farm Calendar

(Continued from Page 10)

Ephrata Area Young Farmers meeting No. 2 on pesticides, at the high school, 7:45 p.m.

Pennsylvania Livestock Association annual meeting and dinner, Crossgates Inn near Mechanicsburg, 6:30 p.m.

Wednesday, Nov. 9

Income Tax Workshop, Kulpville Holiday Inn, 9 a.m. to 4 p.m.

Lebanon County Conservation District board of directors meets, 8 p.m. Room 209 in the Post Office Building, Lebanon.

"Grain Marketing 77-78" a program of the New Jersey Extension Service, will be shown at the Hunterdon County, N.J. Extension Center, 8 p.m.

Dover Young Farmers meeting, hay and forage show, at the high school.

Penn State Foliage and Flowering Pot seminar, King of Prussia

Thursday, Nov. 10

Federal Land Bank and Production Credit of York annual stockholders meeting, The Embers Restaurant, Carlisle, dinner at 7 p.m.

Annual meeting of the Franklin County DHIA, also awards banquet, 7 p.m. at the Lemasters Community Center

Agriculture-Industry banquet, Lancaster Farm and Home Center, 7 p.m.

Elizabethtown Young Farmers meet at the high school, 7:45 p.m. Subject: corn.

The Susquehanna River Basin Commission meets at the Penn Harris Motor Inn, Camp Hill, 1 p.m.

Friday, Nov. 11

York County FFA

meeting, 7 p.m. at Dover High School, Dover.

Pennsylvania Egg Marketing Association meets, Sheraton-Conestoga, Lancaster, 7 p.m.

Lehigh County Extension Service has annual meeting, at the new Penn State campus just north of Fogelsville, 7 p.m.

Saturday, Nov. 12

York Pomona Grange, hosted by Washington Grange at Kralltown, beginning at 2 p.m.

Sunday Nov. 13

Family Day at NEPPCO meeting kicks off the annual meeting. Registration begins at 1 p.m. Exhibit halls open at 6 p.m. Program continues through Tuesday afternoon at the Host Farm, Lancaster.

NEMA board of directors meets today and tomorrow at the Continental Inn, Lancaster.

GOODYEAR

PIT STOP

ON-THE-FARM TIRE SERVICE

JUST CALL 299-3794



• Flats repaired or replaced promptly • Tube valves replaced • Tire's liquid-filled • Tire sales & service for every truck tractor and auto on your farm!

PHILIP LEBZELTER & SON CO.

(Independent Goodyear Dealer)
1062 Manheim Pike, Lancaster, PA 17604

USED GRAIN DRYERS

- 1 MC Model 600E Continuous Flow Dryer w/2-20 H.P. 3 phase motors, complete with 800 Bushel wet holding tank and fill augers; excellent condition, \$10,900.
- 1 MC Model 400 PTO Drive Continuous Flow Dryer \$5,500.
- 1 Farm Fans, 10 to 12 H.P., Centrifugal fan with heater unit (Model F.F.C. 1024/single phase) \$1,350



LOUCKS

GRAIN EQUIPMENT INC.

Box 216, RD 12, York, PA. 17406

717-755-2690

WHY??

SHOULD I CONSIDER A FARM DRAINAGE INVESTMENT FROM COCALICO EQUIPMENT CO.?

BECAUSE

THEY ARE LAND IMPROVEMENT SPECIALISTS USING ALL S.C.S. APPROVED MATERIALS

Call 215-267-3808

ASK ABOUT THEIR LASER BEAM GRADE CONTROL DRAINAGE MACHINE



Drainage Pays High Returns

| Investment | Typical Annual Return |
|----------------------|-----------------------|
| Land Drainage | 21-46% (d) |
| Farm Buildings | 3-23% (d) |
| Farm Land | 11% (e) |
| Stocks | 7.4% (f) |
| Bonds | 6.1% (g) |

COMPARE

Even with the conservative figures shown above, it's obvious that land drainage should top farmers' lists of investment priorities.

COCALICO EQUIPMENT CO.



DRAINAGE & EXCAVATING

RD#3 DENVER, PA. 17517
(215) 267-3808