

Livestock market and auction news

East Coast Carlot Meats

Princeton, New Jersey
October 26, 1977

Compared to Tuesday's close: trading light on beef and pork as reported by the USDA. Steer beef no comparison, however comments light. Prime special fed veal steady to 2.00 lower. Good and Choice Boning veal fully 2.00 higher. Lamb compared to last week steady to 2.00 lower, decline on 65 lbs. down.

STEER BEEF
(3 Loads Confirmed)
Choice 3 Selected 600-700 lbs. 71.00.
Choice 3 650-800 lbs. 70.50.

COW BEEF
Canner-Cutter 1-2 350 lbs. up 48.00 late yesterday.

VEAL CARCASS-HIDE ON
Prime (Special Fed):
Kosher 180-250 lbs. 114.00-116.00; mixed Kosher and non-Kosher 180-250 lbs. 110.00-113.00, steady to 2.00 lower.

Good and Choice Boning Type Veal: Northeastern Suppliers all fully 2.00 higher; 65-75 lbs. 60.00; 55-64 lbs. 58.00; 45-54 lbs. 56.00; 35-44 lbs. 54.00; 34 lbs. down 52.00. Midwest and West Coast Suppliers higher sales for next week's delivery; 70-80 lbs. 60.00-65.00; 60-70 lbs. 58.00-63.00; 50-60 lbs. 56.00-61.00; 40-50 lbs.

54.00-59.00; 30-40 lbs. 52.00-57.00.

LAMB
CHOICE & PRIME 3-4
(24 Loads Confirmed)
Compared to last week: 55 lbs. down 112.00-114.00, steady; 65 lbs. down 110.00-113.00, 1.00-2.00 lower; 65-75 lbs. 110.00-112.00, generally steady.

FRESH PORK CUTS
LOINS: 14 lbs. down 87.00; 14-17 lbs. 86.00-86.50.
BELLIES, SDLS: 12-14 lbs. 48.50.

CURED & PROCESSED MEATS
(11 Loads Confirmed)
SKINNED HAMS: 16-19 lbs. 88.50, steady.

SEMI BONELESS HAMS: 17-20 lbs. 102.00, steady.
PICNICS: 5-9 lbs. 61.00.
1 LB. SLICED BACON: Vacuum Pack 99.00.

FRANKS: 70 Beef, 30 Pork, 1 lb. Pack 62.00, steady.

BOLOGNA: 70 Beef, 30 Pork, 1 lb. Pack 64.00, steady.

BONELESS BEEF
85% chem. lean, fresh 64.00.

BEEF TRIMMINGS
(1 Load Confirmed)
50% chem. lean, fresh 35.50-36.00.

Omaha Cattle

October 27, 1977

Compared with the previous week's close: closing prices on slaughter steers were weak to 25 lower. Heifers were mostly steady, But Good and low-Choice under some pressure late. Cows were 50-1.00 higher and bulls firm to 50 higher.

Four day receipts 17,000 as compared 15,500 previous week and 13,900 a year ago. Despite the non-slaughter observance of Veteran's Day in many plants on Monday, prices on slaughter steers and heifers edged slightly upward. The early advance was lost later, however, as most interests accumulated sufficient live inventories to meet immediate requirements. Slaughter under Federal inspection was moderately reduced by the Monday Holiday, but

carcass trading was generally dull through midweek. The overall finish of the Fed cattle supply was attractive on Monday with a liberal percentage Choice, but Good to Average-Choice predominated on following days. Slaughter steers made up approximately 34 percent and Heifers 30 percent. Cows comprised 8 percent and feeders for auction fully 25 percent.

STEERS: Early, ten loads Choice and Prime 3-4 1095-1227 lbs. 43.35-43.50. At midweek, three loads Choice and Prime 3-4 1090-1200 lbs. 42.50-43.00. Choice 2-4 1000-1275 lbs. closed 41.75-43.00, mainly 41.75-42.50. Mixed good and choice 2-3 950-1225 lbs. 40.50-41.75. Good 2-3 37.50-40.50. Standard and Good 2-3 35.00-36.50.

Average of LS-214, detailed quotations, for Choice 900-1100 lb. steers this week 42.38; Choice 1100-1300 lbs. 42.50. Average weight steers first three days 1112 lbs. as compared 1111 lbs. previous week. Average weight heifers first three days 967 lbs. as compared 966 lbs. previous week.

HEIFERS: On Monday, moderate volume choice and prime 3-4 968-1093 lbs. 41.65-42.00, part load 3 1016 lbs. 42.10. At mid week, five loads choice and prime 3-4 959-1048 lbs. 41.50-41.60. Choice 2-4 875-1050 lbs. 39.75-41.00, occasionally 41.25. Mixed Good and Choice 2-3 875-1000 lbs. 38.50-40.00. Good 2-3 35.00-38.50. Small lots standard and Good 2-3 32.00-34.00.

COWS: Utility and commercial 2-4 23.50-25.50, few 26.00. Canner and Cutter 20.00-23.50.

BULLS: 1-2 1400-1800 lbs. 30.00-33.00, few 1 33.50-34.00. MGI.

Leesport Auction

Leesport, Pa.
October 26, 1977

Supply included 135 head feeder cattle.

CATTLE 368. Compared with last Wednesday's market, slaughter steers steady to \$2 higher, most

advance on Choice grades. Slaughter cows \$1 to \$2 higher. Few High Choice and Prime 4-5, 1000-1190 lbs. slaughter steers 42.85-44.00, Choice 2-4, 950-1350 lbs. 42.00-44.10, few at 44.50, High Good to Low Choice 39.75-42.00, Good 36.00-40.25, Standard 33.00-35.85. Few Choice slaughter heifers 34.35-37.10, Good 30.00-34.25, few Standard 27.00-29.25, few Utility 23.85-25.75. Utility and Commercial slaughter cows 25.50-27.10, couple 29.50 and 29.60, Commercial (few) 4-5, 24.50-25.35, Cutters 24.00-25.85, Canner and Low Cutter 22.00-24.10, few Shells down to 17.00. Few Good and Choice slaughter bullocks 33.50-37.75, few Standard 32.00-33.00. Few Yield Grade No. 1 1175-1735 lbs. slaughter bulls 32.60-33.50, one at 39.50 individual Yield Grade No. 2, 1725 lbs. at 31.35. Choice 350-850 lbs. feeder steers 34.00-38.00, lot to 39.50, Good 350-900 lbs. 28.00-34.50, Medium 300-700 lbs. 22.50-30.00. Medium and Good 350-675 lbs. feeder heifers 20.00-26.00. Good and Choice 400-600 lbs. feeder bulls 25.00-32.50, few at 35.50.

CALVES 186. Vealers steady to \$2 higher. Individual Prime vealer at 70.00, Choice 63.00-70.00, Good 50.00-60.00, Standard and Good 110-130 lbs. 45.00-52.00, 90-110 lbs. 32.00-39.00, Standard 70-90 lbs. 28.00-34.00, Utility 50-100 lbs. 15.00-25.00. Farm Calves were extremely active. Holstein bulls 90-125 lbs. 38.00-50.50, individual at 54.50.

HOGS 362. Barrows and gilts mostly 75 cents to \$1.50 lower. US No. 1-2 200-225 lbs. barrows and gilts 42.75-43.25, lot 43.50, No. 1-3 200-250 lbs. 42.00-42.75, No. 2-3 195-250 lbs. 40.25-42.10, 230-290 lbs. 35.00-40.25, No. 1-3 115-175 lbs. 33.00-38.00. Sows steady to 75 cents lower US No. 1-3 265-525 lbs. sows 34.00-37.25, one at 39.00, No. 2-3 310-610 lbs. 30.00-35.00, few Utility 300-455 lbs. 25.00-30.00. Boars 25.00-27.75.

FEEDER PIGS 102. ALL SALES PER HUNDREDWEIGHT BASIS. One lot US No. 1-2 35 lbs. feeder pigs at 79.00, 97.00, lot 60 lbs. No. 1-3 25-45 lbs. 70.00-83.50, few No. 1-3 55-75 lbs. 53.00-64.00 cwt.

SHEEP 15. Few Choice 60-105 lbs. woolled slaughter lambs 53.00-63.00. Few slaughter 16.00-17.50.

Sale Reports

A Fall swine sale was held on October 7 by the Brooks End and Par Kay Farms, Beavertown, Pa. The top selling individual was a Yorkshire boar which sold for \$1100 to Alder Branch Farm, Centerville, Md.

The 32 Yorkshire boars averaged \$442. Twelve Landrace boars averaged \$340; 39 Yorkshire bred gilts averaged \$467; 13 Landrace bred gilts averaged \$447; 115 commercial open gilts averaged \$202; two Duroc bred gilts averaged \$380; and two crossbred gilts averaged \$375. The 215 head totalled \$67,380.

The top selling Yorkshire bred gilt went to Richard S. Hartman, New Carlisle, Ohio, for \$750. The top selling Landrace bred gilt went to Vernon Heidt of New Knoxville, Ohio, for \$675.

Area youth attend hort convention

LEBANON - Approximately 400 young adults with a special interest in horticulture, including Cindy Gebhard, Jonestown; Melissa Weaver, Fredericksburg; Amy Schaffer, Lebanon; Lisa Yordy, Palmyra; Bob Bensing, Lebanon; Jim Connor, Lebanon; Alison Scheib, Phoenixville; Janet Latshaw, Spring City; Jena Wyatt, West Grove; Joann Wyatt, West Grove; Warren Hilberg, Phoenixville; Dean Nafziger, Phoenixville; and Dave Foresman, adult leader from Kennett Square, are taking part in the forty-third annual National Junior Horticultural convention held this weekend in Winston-Salem, North Carolina.

The NJHA meeting will bring together young horticulture leaders from across the nation to compete in various demonstrations and contests, take in tours of the Winston-Salem area, and learn about the world of horticulture.

The convention is the focal point for national com-

petition in such areas as environmental education and beautification; production and marketing; experimental horticulture; "speaking of horticulture"; gardening; plant propagation; and achievement and leadership recognition.

The horticulture contest will pit winning teams from over 35 states in a challenging and educational activity. Over 200 contestants will compete in a written test, identify a wide variety of plant materials, and judge classes of vegetables, fruits, flowers, and ornamental specimens for consumer quality.

Other program highlights include workshops ranging from corsages and floral arrangements to sand sculpture. Climax of the four-day conference will be the forty-third awards banquet where regional and national winners in the various categories of competition will be announced.

Keystone Expo opens next week

HARRISBURG - The opening of the Farm Show doors on Saturday, November 5 will mark the 21st birthday of the Keystone International Livestock Exposition, one of the nation's greatest international livestock shows.

The Exposition is sponsored by the Pennsylvania Department of Agriculture, the Pennsylvania Livestock Association, and the Pennsylvania Farm Show Commission. The purpose of the exposition is to advance the livestock industry, to encourage conservation and to emphasize the meat-type animal.

The continued success of the Keystone International can be seen in last year's entries: a record 3978 head of livestock representing nearly half the states and Canada.

This year, for the first time, a separate division has been established for "special breeds" in the beef cattle department, open to all breeds with national associations and percentage papers, not eligible in other breed shows. The growing popularity of "special breeds," such as Limousin, Chianina, Simmental, Longhorn, and Santa Gertrudis, has made a significant impact on the livestock industry in recent years.

The American Chianina Association has announced that they will award \$5000 to the owner of any registered Chianina steer which is judged grand champion on-foot over all breeds at the Keystone International.

Top selling Landrace boar went to Milton Soyser, Geneva, N.Y., for \$590.

The pigs were purchased by buyers from 11 different states. Another offering of 200 head will be sold on January 13.

A full week of judging in general horse, sheep, swine, and beef cattle will be complimented by many special events which will give the visitor a better understanding of the livestock industry.

Recognizing that the future is in the hands of farm youth, the Keystone International provides junior categories in competition and judging.

The 21st Annual Keystone International Livestock Exposition runs from November 5 through 11 at the Farm Show Complex in Harrisburg. A detailed program may be obtained from the Keystone International Livestock Exposition, Farm Show Building, Harrisburg, Pa. 17120, or by calling 717-787-2095.

Area farmers attend Agway annual meeting

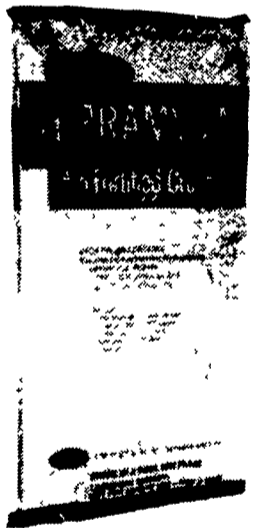
SYRACUSE, N.Y. - Lancaster County farmers were among the 5000 persons gathering in the Onondaga County War Memorial, here, October 27-28, for the 13th annual meeting of Agway Inc.

Agway Inc., a farm supply and food marketing cooperative owned by 121,000 member-stockholders, serves agriculture in 12 northeastern states. Its headquarters are in Syracuse.

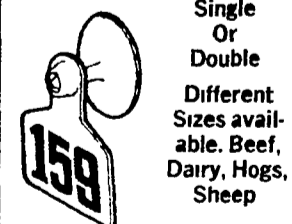
Representing the Garden Spot Zone of Agway at the two-day session were 40 committeemen, members and guests.

They heard reports on the past year's operation from chairman of the board George Steele of Pocopson, Pa. and general manager Ronald N. Goddard.

ATTENTION TRAILER LOAD SALE
Terramycin Crumbles
Aureo-S 700 Crumbles
Baymix Wormer Crumbles




Allflex TAG SYSTEM



ZIMMERMAN ANIMAL HEALTH SUPPLY
RD4, Lititz, PA 17543
Home Store Phone
717-733-4466
Closed All Day
Wednesdays.

ATTENTION:
Available at David Good's Farm Machinery Sale Nov 2 by Pop S. Zimmerman.



EASTERN LIMOUSIN BREEDERS ASSOCIATION SALE

Held in conjunction with the
KEYSTONE INTERNATIONAL LIVESTOCK EXPOSITION
HARRISBURG, PA.

SAT - NOV. 5, 1977
7 P.M.

51 - Fifty one - 51 FULLBLOOD AND PERCENTAGE ANIMALS BREEDING STOCK - CLUB CALVES

For Catalogues & Information
6310 LaGrange Rd
Wyoming, N.Y., 14591
716-495-6509