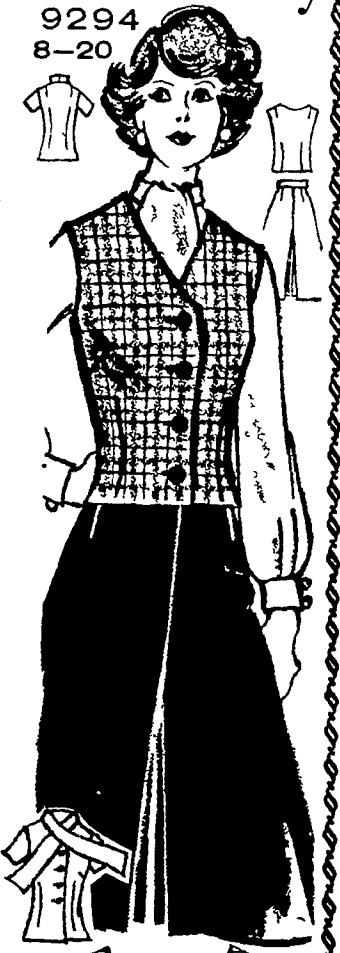


Quick 'n' Easy

9294
8-20



7262

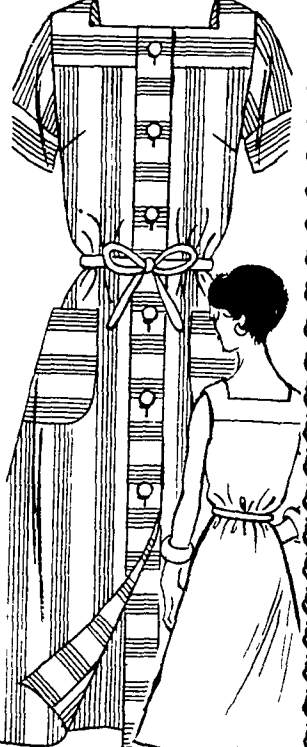
Beautifully designed Use scraps or same fabrics for this prize winning applique quilt Use one square for a pillow Pat 7262 patch pattern pieces charts single double size

When you start the day looking this great there's no way you can miss Dashing vest tops scarf tie blouse culottes Printed Pattern 9294 Misses Sizes 8 10, 12 14, 16, 18 20 Size 12 (bust 34) culotte 1 7/8 yards 60 inch vest 7/8 yard 45 inch blouse 2 1/8 yards

WHAT A JOY to slip into something casual uncontrived flattering when you're beginning a busy day No waist seam no fuss—belt it or not! Printed Pattern 9117 Half Sizes 10 1/2 12 1/2 14 1/2 16 1/2 18 1/2 20 1/2 Size 14 1/2 (bust 37) takes 2 7/8 yds 45 inch

\$1 25 for each pattern Add 35c for each pattern for first class airmail handling Send to

Quick 'n' Easy Patterns 170
232 W 18 St New York NY 10011
FASHIONS TO SEW (F/W) \$ 75
1978 NEEDLECRAFT CATALOG 75
DESIGNER COLLECTION #33 75
INSTANT CROCHET BOOK 1 00
INSTANT MACRAME BOOK 1 00
INSTANT FASHION BOOK 1 00
INSTANT MONEY BOOK 1 00
NIFTY FIFTY QUILT BOOK 1 00
STITCH 'N PATCH QUILTS 1 25
STUFF 'N PUFF QUILTS 1 25
SEW 'N KNIT 1 25
PILLOW SHOW OFFS 1 50
EASY GIFTS 'N ORNAMENTS 1 50
Add 25c each book for postage handling



9117 10 1/2 -20 1/2

Ida's Notebook



Ida Risser

Several days ago I attended a women's meeting where skits were presented showing the different phases of life. They were based on the book, "Passages" by Gail Sheehy.

The first one showed young people pulling up roots and leaving home to find their place in the world. The next skit was entitled, "The Trying Twenties". This was followed by the "Catch Thirties" in which one began to wonder if ones job and marriage was really living up to expectations.

Then came the "Deadline Decade" where one had to decide that if ever one hoped to achieve ones goal, they had better act and act quickly. We were told it could be a time of renewal where we learned to live with ourselves and others by being tolerant, forgiving, and understanding. If one keeps score, one ends up being miserable!

The other alternative to renewal was resignation and depression. I'm sure many people accept this situation rather than forging a new life style that suits themselves. We can't please everyone, and we all do need a certain amount of self-love.

Some farm wives keep so very busy that they don't have time to philosophize on which stage of life they are in at a particular time.

Recently, I heard a lady tell how she painted all of her husband's farm machinery prior to their farm sale and also painted a whole house - inside and outside too. Another farm wife told of rising every morning at 4:30 a.m. to milk cows for years and years. I really do commend them but somehow that is not my idea of what I want to do with my life.

TRY A CLASSIFIED AD!

Ariens TRACTOR/SNO-THRO



STANDARD FEATURES:

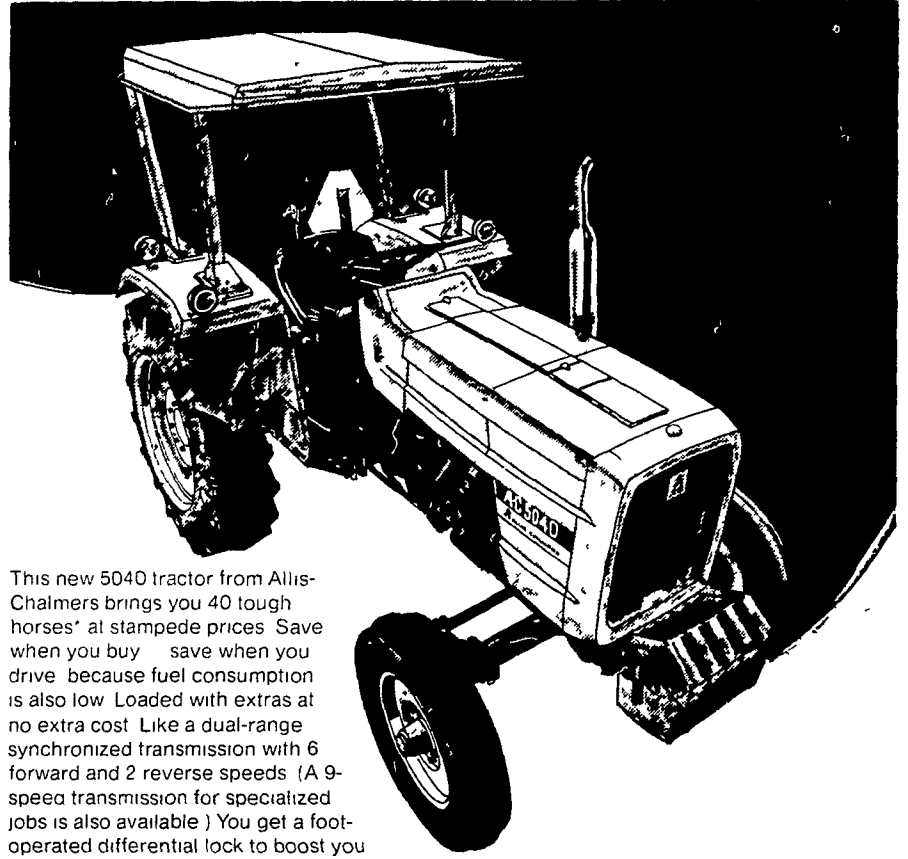
- Ease of attachments
- Multi-attachment capability
- Front, center and rear attachment lift
- Convenient controls
- Shaft driven attachments
- Step-through deck
- Easy access hood and deck
- Large rear gas tank
- Heavy duty frame, axle
- One line of attachments fits all
- Hydraulic down pressure
- Electro-magnetic clutch

Many Accessories & Attachments Available

STAUFFER'S GARAGE

Martindale, PA 17549
Phone (215) 445-6465

40 TOUGH HORSES. VERY TENDER PRICE.



This new 5040 tractor from Allis-Chalmers brings you 40 tough horses* at stamped prices! Save when you buy - save when you drive because fuel consumption is also low. Loaded with extras at no extra cost! Like a dual-range synchronized transmission with 6 forward and 2 reverse speeds (A 9-speed transmission for specialized jobs is also available.) You get a foot-operated differential lock to boost you out of soft spots - power steering - thermo-start for fast cold weather starting - foot throttle plus hand throttle - and more—all at no extra cost! All backed by Allis-Chalmers warranty and our prompt professional service. Come in. Test drive a hard bargain with us now on this 5040 - and save!

Manufacturer's maximum observed PTO horsepower at rated engine speed

The Rising Power in Farming

ALLIS-CHALMERS

A. J. NOSS & SON, INC.
RD 2, Oley, PA
215-987-6257

C. J. WONSIDLER BROS.
RD 1, Quakertown, PA 18951
Phone 215-536-1935
215-536-7523

C. J. WONSIDLER BROS.
Rt. 309 & 100
R2 New Tripoli, PA 18066
215-767-7611

L. H. BRUBAKER, INC.
Lancaster, PA
717-397-5179

GRUMELLI FARM SERVICE
Quarryville, PA
717-786-7318

ROY H. BUCH, INC.
Ephrata, RD 2
717-859-2441

BHM FARM EQUIPMENT, INC.
Annville, RD1, PA
717-867-2211

SHARTLESVILLE FARM EQUIPMENT
Shartlesville, PA
215-488-1025
H. Daniel Wenger, Prop.

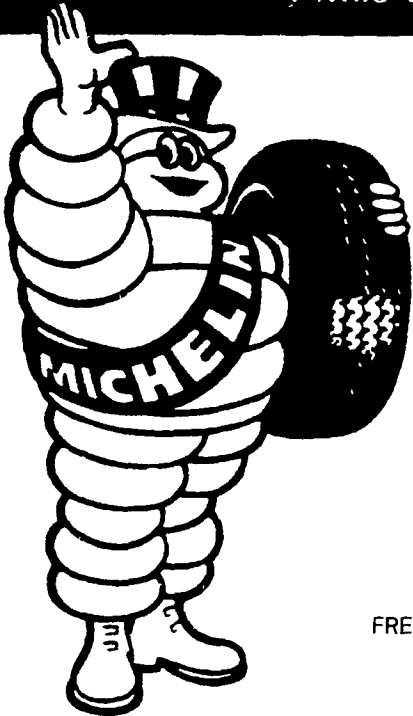
AG-INDUSTRIAL EQUIPMENT
R2, Rising Sun, MD
301-658-5568

OFFICIAL INSPECTION STATION

HURST TIRE SERVICE

Phone 717-354-4931

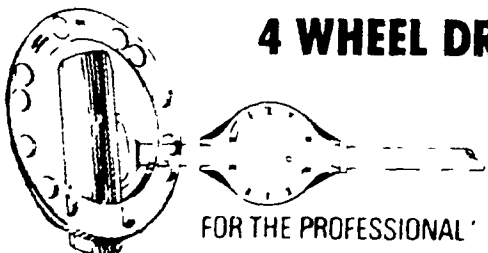
1 Mile West of Blue Ball On Rt 322



PRICES GIVEN ARE FOR MICHELIN BLEM

175 X 14.....	42.48
195 X 14.....	48.30
E78 X 14.....	49.74
FR78 X 14.....	53.84
215 X 14.....	56.84
HR78 X 14.....	61.00
205 X 15.....	55.29
HR78 X 15.....	59.90

FREE MOUNTING AND BALANCING FREE VALUES Available in some size Michelin Snowtire Blems Call us for your Winter Tire Needs



FOR THE PROFESSIONAL

4 WHEEL DRIVE ALIGNMENT

WITHOUT BENDING