

Livestock market and auction news

(Continued from Page 9)

36.25, Medium 330-635 lbs. 25.00-32.00; few Good 435-700 lbs. feeder heifers 24.00-28.25; few Good & Choice 300-600 lbs. feeder bulls 32.00-36.50, Medium & Good 470-835 lbs. 25.25-32.50.

CALVES 185. Choice vealers 61.00-67.00, Good 49.00-61.00, Standard & Good 110-135 lbs. 38.00-48.00, 90-110 lbs. 34.00-38.00, Standard 70-90 lbs. 28.00-34.00. Farm calves, holstein bulls 90-120 lbs. 38.00-43.00; few holstein heifers 90-125 lbs. 40.00-53.00.

HOGS 379. Barrows & Gilts mostly \$1.50 to \$2 higher. US No. 1-2 200-235 lbs barrows & gilts 44.00-44.60, No 1-3 200-245 lbs. 43.00-44.00, No. 2-3 195-265 lbs. 40.85-42.85, few No. 2-4 245-265 lbs. 38.00-39.75, No. 1-3 155-195 lbs. 37.75-40.50. US No. 1-3 260-455 lbs. sows 34.75-37.25, No. 2-3 360-590 lbs. 30.00-34.75, few Utility 225-275 lbs. 25.00. Boars 25.00-27.75. Few Stock Boars 29.25-31.50.

FEEDER PIGS 188. ALL PRICES PER HUNDRED WEIGHT BASIS. US No. 1-3 20-35 lbs. feeder pigs 60.00-72.00, few lots up to 108.50, No. 1-3 35-60 lbs. 40.00-61.00, No. 1-3 60-100 lbs. 25.00-38.00 cwt.

SHEEP 19. Few Choice 85-100 lbs. wooled slaughter lambs 49.00-54.00, few Good 80-100 lbs. 44.00-47.00. Few Slaughter sheep 14.00-17.50.

Valley Livestock

Valley Stockyards
Athens, Pa.

Monday, Oct. 17, 1977

Cattle market easier and calf market steady.

Veals 50.00-61.50; bobs, 90-110 lbs. 34.00-38.00; bobs, 80 lbs. and down 30.00-34.00; grassers and feeders 22.00-36.50; lambs 30.00-40.00; sheep 8.00-12.00; hogs, 200 to 250 lbs. 38.00-42.25; sows 28.00-32.00; boars 18.00-24.00; pigs 10.00-25.00; heifers 26.00-32.50; steers, good 30.00-34.00; steers, common 24.00-30.00; bulls 27.00-32.75; cows, good 24.00-25.00; cows, medium 21.00-22.50; cows, poor or small 14.00-19.00; goats 8.00-22.00.

Peoria Auction

Peoria, Illinois
Oct. 20, 1977

Estimated receipts this week 5100; last week 5432; last year 6211.

Compared with last week's close, slaughter steers steady to weak, few fully 50 lower with most decline for the period confined to a few loads on the close Wednesday. Heifers steady. Cows 1.00 lower. Bulls 50 lower.

Steer receipts mostly choice, few loads high and choice and prime with wts. ranging largely 1050-1175 lbs. Heifer supply choice and prime mostly 850-950 lbs. Cows about 7 pct. Best outlet existed for steers over 1150 lbs. But only few loads over 1200 lbs. were included in the supply and as a result the market was not fully tested on these.

SLAUGHTER STEERS: High choice and prime 3-4, 1130-1250 lbs. 42.75-44.00 load 4-5, 1465 lbs. 39.00. Choice 2-4, 1050-1250 lbs. 41.50-43.00, mostly 42.00-42.50; 2-3, 950-

1050 lbs. 40.50-42.00. Mixed good and choice 2-3, 900-1150 lbs. 39.00-41.50, good 2-3, 38.00-39.50. Standard 34.00-37.00.

SLAUGHTER HEIFERS: High choice and prime 3-4, 900-1085 lbs. 40.00-41.00; couple loads 1034 and 1039 lbs., 41.50. Choice, few prime, 2-4, 850-1050 lbs. 38.00-40.75, mostly 39.00-40.50. Choice 800-900 lbs. 37.50-40.25. Mixed good and choice 2-4, 750-950 lbs. 36.50-39.00. Good 2-3, 34.00-37.00.

COWS: Utility and few commercial 2-4, 22.50-25.00, few utility 25.50-26.00. Cutter 1-2, 20.00-23.00, canner 17.00-20.00.

BULLS: Yg 1-2, 1100-1700 lbs. 28.00-32.50.

Des Moines Carlot

October 19, 1977

Compared to Tuesday's close, fresh pork cut trade moderate. Demand moderate. Fresh loins no comparison available. Picnics 1.00 higher. Boston butts steady to 2.00 higher; spareribs no comparison available. Skinned hams

steady to 50 lower, except 20-26 lbs. 25 higher. Bellies mostly steady, instances 75 higher on 10-12 lbs.

FRESH PORK CUTS
LOINS: 14/DN lbs. 88.75; 14-17 lbs. 87.75-88.00; 17-20 lbs. 82.00; couple loads 20 & up 70.50.

PICNIC: 4-8 lbs. 46.75-47.00; load 47.25, 1.00 higher.

BOSTON BUTT: 4-8 lbs. 66.00, steady to 2.00 higher.
SPARERIBS: 3/DN lbs. 78.00-79.00; 3-5 lbs. 66.00.

SKINNED HAMS: 14-17 lbs. 88.50-89.00; couple loads

85.00, 50 lower; 17-20 lbs. 82.00, steady; 20-26 lbs. 79.50, 25 higher.

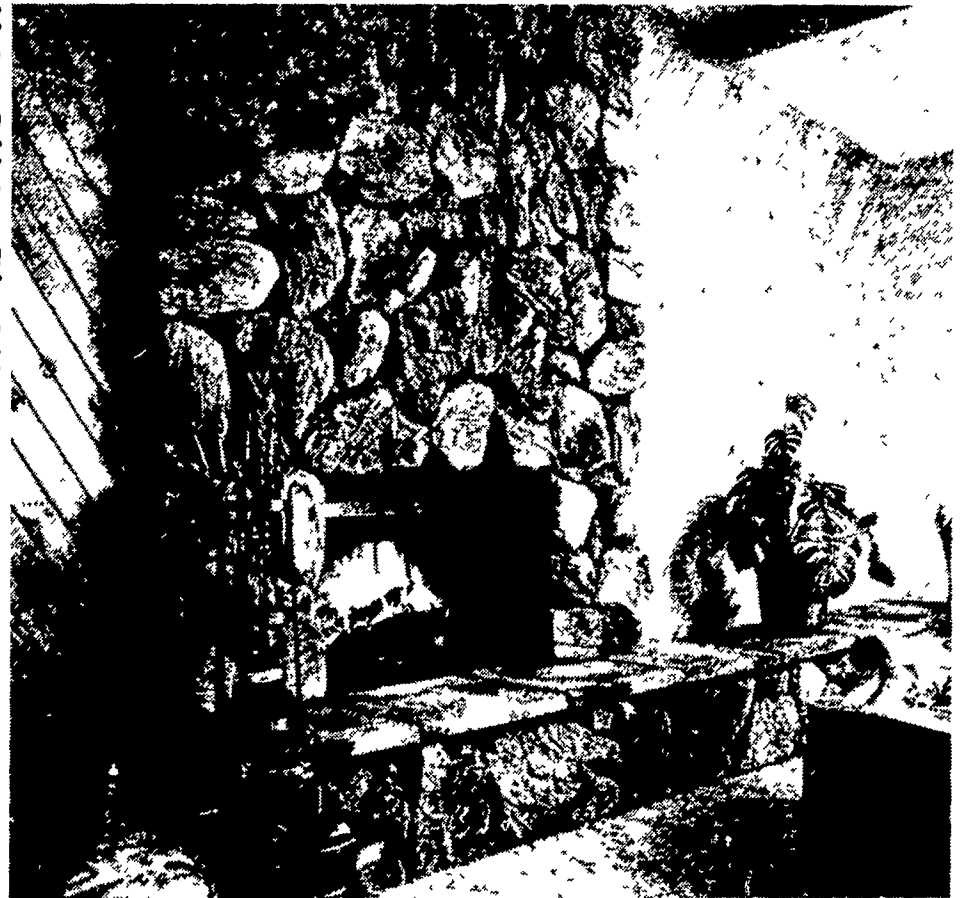
BELLIES, SDLS: 8-10 lbs. 44.00-44.75, steady, instances 75 higher; 10-12 lbs. 46.00-46.50, steady; 12-14 lbs. 54.00-54.50, steady; 14-16 lbs.

(Continued on Page 14)

DO IT YOURSELF!

*EASY TO INSTALL

*BUILD YOUR OWN FIREPLACE



CULTURED STONE VENEER®

By Stucco Stone® of California

•MANY COLORS AVAILABLE •FLAGSTONE AVAILABLE FOR HEARTH

MANY USES



•WALLS •FIREPLACES
•PATIOS •BACKDROP FOR WOODSTOVE

FEATURES

•**SHEAR STRENGTH** (Adhesion strength): Cultured Stone Veneer® has a shear strength in excess of 250 p.s.i. This result is 5 times that required by the Union Building Code.

•**FIREPROOF:** Tested and classified by Underwriters Laboratories, Inc., Cultured Stone Veneer® has zero flame spread, zero fuel contributed, and zero smoke developed. See UL Classification numbers 209T or 305T.

•**THERMAL RESISTANCE:** The insulative qualities (r) of an average thickness of Cultured Stone Veneer® are equal to 14 inches of typical natural stone & nearly 6 inches of common brick.

•**WEIGHT:** Shipping weight approximately 8 lbs. per square foot at average thickness of 1 3/4 inches.

•**COLOR FASTNESS:** Colors are an integral part of the casting process.

YOUR SECURITY & ENERGY CENTER

SHOW ROOM
DISPLAY

1830 State Street
East Petersburg, Pa.
Ph. 717-569-7397

Mon. thru Thurs.
10 A.M.-5 P.M.

Fri. 10 A.M.-8 P.M.
Sat. 8 A.M.-12 Noon

HEISTAND DISTRIBUTORS

BOX 96 MARIETTA, PA 17547

PH: 717-653-8243

426-2611

7 Miles North of Route 30 on Route 441 Interchange to Engle Road. Follow Signs.

VISIT THE INTERNATIONAL AGRICULTURAL EXPOSITION IN WEST BERLIN.

THE WORLD RENOWNED "GRÜNE WOCHE"

AND PARTICIPATE IN A GRAND TOUR OF GERMANY

DATES

JAN. 26 to FEB. 9, 1978

Conducted by THE AMERICAN GERMAN LANGUAGE AND CULTURAL SOCIETY, INC.

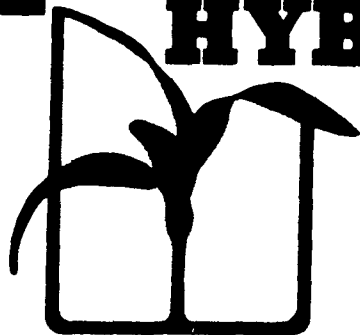
For Detailed Information and Reservation Forms Write: GERMANIC LANGUAGE AND CULTURAL CENTER

Box 636 Nuremberg, Pa. 18241

"This is a tour the progressive farmer can't afford to miss."

PLANT SMART! YIELD BIG!

TODD HYBRIDS



Check the full line of Todd 'Top Performer' hybrids for a more profitable yield next year. No matter what your soil or growing conditions there's a Todd hybrid ideally suited to your farm. See your Todd Dealer for details on quantity discounts. Order "THE TOP PERFORMERS"

TODD HYBRID SALES, INC.

ABBOTTSTOWN, PA. 17301

SEED CORN • SORGUMS • SOYBEANS • ALFALFA