

Firewood from woodlots is potential income



Many farms have woodland on them which is allowed to grow untouched and is forgotten in the farmer's mind.

by KENDACE BORRY
ALLENTOWN - Due to the popularity of fireplaces and cast-iron stoves, and the shortages of the convenient fuels of natural gas and oil, firewood is facing an increasing demand in today's market. The use of wood for fuel is a logical one, for trees are a renewable resource. They can be harvested repeatedly without disturbing the natural environment, if managed properly.

In the past, woodlots have often been mismanaged, overcut, or neglected by owners or managers. Poor cutting procedures have left woodlands with areas with

an abundance of crooked - growing and diseased trees that are unsaleable. Besides keeping healthy trees from growing to become strong and straight specimens, the woodlot owner and manager is hurting himself by losing a potential income through proper use of his woodlot.

Many farms have a woodland area on them that most usually is forgotten and neglected. Sometimes pastured, it is simply thought of as the woods and put of the farmer's mind. But with a little planning and work, this woodland area can be added income potential for the farm.

For a cord of wood, a

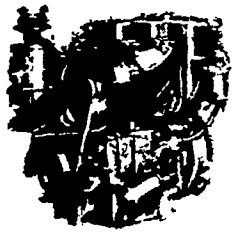
section of wood four feet wide, four feet high, and eight feet long, an average price of mixed wood could be approximately \$60, delivered, according to Robert Leiby, Lehigh Co. Extension Service. To cut this amount of wood, would take an average man about three to four hours, according to Leiby. With careful selection and a good woodlot program, the farm woodlot can be a continuing income resource.

Trees need space to grow at their peak efficiency. If they are spaced too close together, they must compete for water, nutrients and needed sunlight, and their

rate of growth is cut down. Thinning of hardwood woodlots helps the process by allowing the more desirable trees to grow. By removing the competing trees in the area, the woodlot will produce larger and better quality trees. This in turn produces a greater volume of wood in a decreased amount of time.

Different trees have different monetary values and before doing any thinning, a farmer should know the value of the different trees. Usually, sugar maple, ash, white and yellow birch are worth more than the beech, red maple, and poplar trees;

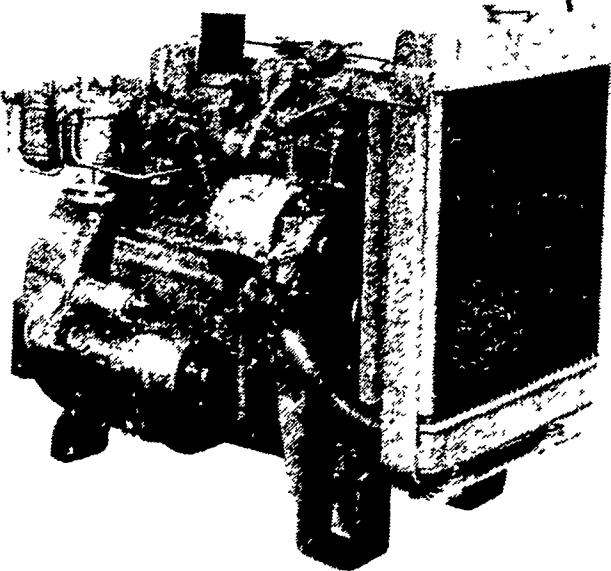
(Continued on Page 102)



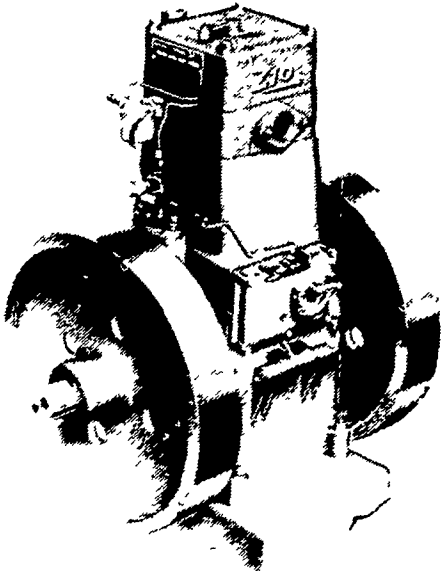
SLANZI & PERKINS DIESEL

- Good Used Diesel Engines
- (4) SR 2 12 hp. Lister
- (1) Z410 10 hp. Bamford
- Sputniks and New Wheels

Perkins Diesel Engine D-3-152
25 to 40 HP



Bamford Diesel Engine Z 410
10 HP



NOTICE: HORNING'S WAREHOUSE
PHONE NUMBER HAS CHANGED

Call Horning's Warehouse 717-354-4158 or
Amos Smucker 717-768-3996
If No Answer Call 717-354-4374

Diesel & Gas

Sales & Service

SMUCKER'S ENGINE SHOP

RD 1, Gordonville, PA 17529



**She has
 farm needs too.
 Farm Credit
 understands,
 and they
 can help.**

A new kitchen, a washing machine, a freezer, furniture, her own car. Farm needs? They are to us. Farm Credit Service knows that running a farm is more than a man's job . . . and it takes more than seed and fertilizer. For your financial requirements . . . farm or personal . . . see your local Farm Credit Representative. He's ALWAYS ready to help with a PCA loan to fit your needs or hers.

**YOU GET A LOT MORE THAN CREDIT
 FROM YOUR OWN FARM CREDIT SERVICE.**



FOR MORE INFORMATION, CONTACT
 YOUR LOCAL COUNTY OFFICE.

