

## Tractor driving results given

NEW HOLLAND - At the New Holland's Farmer Fair, the Garden Spot Young Farmer Chapter sponsored their annual tractor driving contest.

Taking top honors for the third year in a row was Nelson Weaver, New

Holland R1. In winning the contest, Weaver beat 10 other contestants on a three part course. All drivers were required to negotiate a tight obstacle course with a tractor and spreader attachment. The course required sharp right and left turns as backing around

obstacles into narrow stalls and coming out again without striking any of the obstacles. The second part of the contest tested the driver's ability to maneuver a four-wheeled wagon into a stall with a two inch clearance on one side. The third event was backing

a five axle harvesting rig consisting of a tractor, forage harvester, and four wheeled wagon for a distance of 200 feet without jack-knifing the rig.

For winning, Weaver received a trophy and \$25 premium. Second place was awarded to Robert Book, Leola R1; and third place went to Harvey Sauder, New Holland R1.

The trophies awarded equipment for the contest. Tractors used in the event were provided by Stauffer Diesel, New Holland.

## Volunteer leaders honored in Del. Co.

MEDIA - Adult volunteer leaders were honored at the annual Delaware County 4-H Leaders recognition banquet held at the Towne House on October 6. The dinner was sponsored by the Delaware County 4-H Development Fund to pay tribute to the leaders "who give of their time and talents throughout the year to teach young people," according to C. R. Bryan, Jr., Delaware County agent for 4-H.

Special recognition certificates were presented by Charles C. Keeler, vice chairman of Delaware County 4-H Council. In his remarks to the group he said "We applaud your efforts for your work with the youth in your community." He also

praised the thousands of people throughout the county who serve as volunteers in many different organizations.

Keeler then presented first year certificates to Kathleen

Lillicrapp of Secane, Eleanor Currie, Lang Ling Tang, Kathy Short and Terry Stevens of Havertown; Silver Clover award certificates for five years of service went to Anne Bates

of Gradyville, Rose Miller of Folsom, Clara Desiderio of Ridley Township, Sarah Lines of Eddystone, David Owens of Glenolden, and Robert Young of Chester; 10 year Gold Clover certificates were awarded to Jane Atkinson of Media and Margaret Simpson of Aston, while Larry Linvill of Middletown Township received 15 year honors. Miriam Damson, a teacher at Media Elementary School, was recognized for having served as a 4-H Leader there for 16 years.

The guest speaker was E. Mildred MacIntyre, principal of Harvard Avenue School in Swarthmore, who spoke on working with handicapped youth. Steve Simasek, 4-H Teen leader from Thornbury Township, served as emcee.

## Broilers up

HARRISBURG - Pennsylvania's poultry production during the week ending October 1 was up nine per cent above the corresponding week a year earlier, according to the Pennsylvania Crop Reporting Service.

Placements of broiler chicks were 1,724,000. The placements were three per cent below the previous week. Average placements in the commonwealth during the past ten weeks were four

per cent above last year's production levels.

In the 21 key poultry producing states, placements were 57,366,000 during the same week. The placements were nine per cent below the previous week, but eight per cent more than the same week in 1976.

Average placements of broiler chicks during the past ten weeks in the 21 states were two per cent above a year ago.

**Built with PRIDE**

BY **HUSKEE-BILT** THRIVE CENTERS SYSTEMS BY HUSKEE-BILT



Thrive Centers Puts it All Together



Thrive Centers Bring Increased Profits by Environment Controlling



Ask About Our Pole Structures

Thrive Centers combine expert engineering knowhow and top quality buildings.

- Odors and Manure Handling Almost Eliminated
- Reduced Pig Mortality
- Better Disease Control
- Better Working Conditions Year Around

Proper insulation and ventilation lets animals do better naturally.

HUSKEE-BILT CONSTRUCTION CO.

**YOUR HUSKEE-BILT MAN: IS MERVIN MILLER**

RD2, Keener Road, Lititz, Penna.  
PH: 717-626-5204

**ATTENTION TRAILER LOAD SALE**  
Terramycin Crumbles  
Aureo-S 700 Crumbles  
Baymix Wormer Crumbles

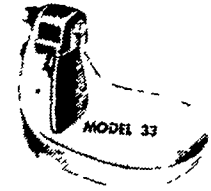
**Allflex TAG SYSTEM**



Single Or Double

Different sizes available Beef, Dairy, Hogs, Sheep.

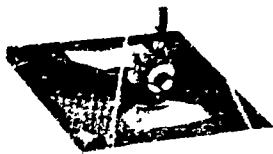
**SPECIAL OFFER ON TROJAN HOG WATERERS**



Gravity or Pressure

**Magic-Ray**

ALL THE WAY



Flameless Catalytic Heaters For Pigs LP-Gas 5000 & 8000 BTU Models 4 Position Dial Heat Control.

**ZIMMERMAN ANIMAL HEALTH SUPPLY**

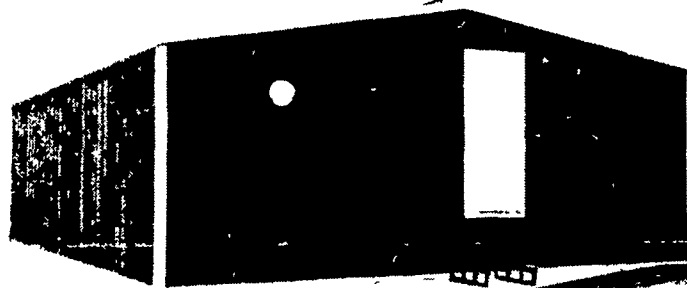
RD4, Lititz, PA 17543  
Home Store Phone 717-733-4466  
Closed All Day Wednesdays.

ATTENTION: Available at David Good's Farm Machinery Sale Oct. 19 by Paul S. Zimmerman.

## The AgStar Total Confinement Systems- Gestation Farrowing Nursery Finishing

**Will expand your hog business for LESS DOLLARS - Let us show you.**

AVAILABLE WITH PIT OR PITLESS



Models come 12 or 24 feet wide (24-foot model shown here), in lengths of 32 or 50 feet. All 24-foot wide buildings have an entry door in each end. See chart on back of this sheet for more specifications.

Built-in ventilation system keeps building dry and provides fresh air for animal health. Unique air flow system pulls air in at roof ridge line, circulates it over the top of the animals, through the pit, and out. Note that design of roof system eliminates the need for any massive bulkheads that could restrict air flow.

Bank Financing & Leasing Available

**See Our Sow Castle on Display**

Farrowing stalls and nursery areas are equipped with aluminum T-slats in the floor, front and rear. Individual slats are 1" across the top and 1" high, with 3/8" spacing between slats.

## SOW CASTLE... the new economical, plug-up-and-go total farrowing environment QUALIFIES FOR TAX INVESTMENT CREDIT



Each farrowing stall has an adjustable sow feeder and automatic water cup. Nipple waterer is optional in place of water cup. Stall sides are adjustable to size of sow. Nursery feeders are provided for pigs.

Each farrowing stall is located inside a pleated chamber to pull air uniformly from pit area to the outside. Building remains virtually odor-free, because odor-laden air from the pit area does not enter living area of the animals.

Look at a few of the features we build into our structures.

**E. M. HERR EQUIPMENT, INC.**

R.D. 3 Sprecher Road Willow St. Pa. Lancaster Co. 717-464-3321