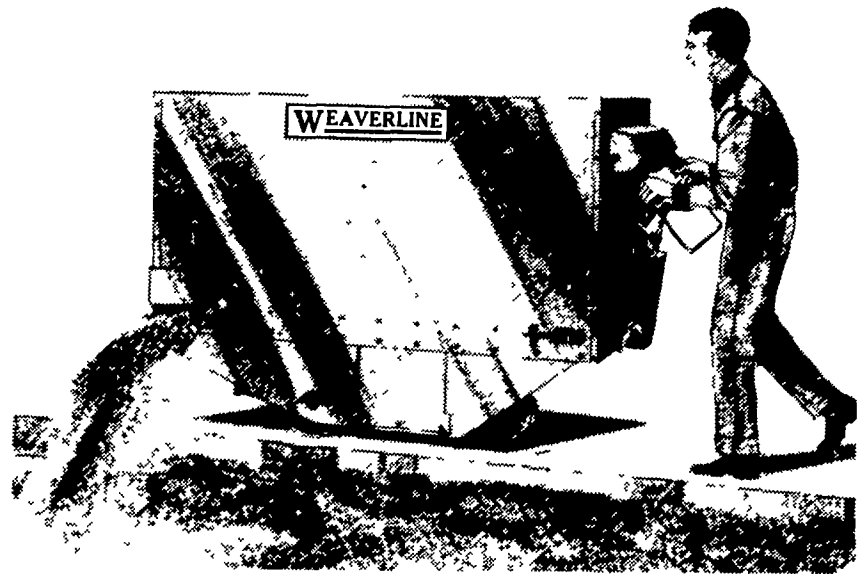
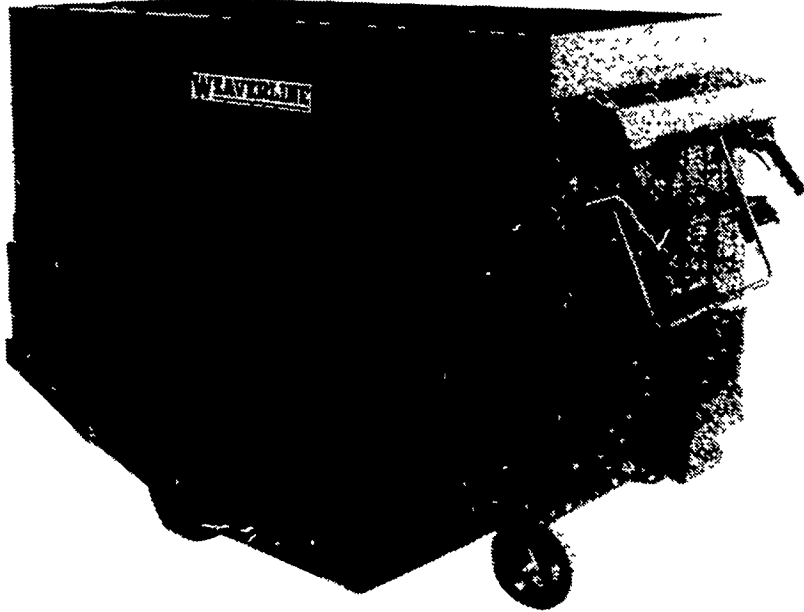


WEAVERLINE BATTERY POWERED CARTS

TWO SIZES: 24 BUSHEL MODEL 223
30 BUSHEL MODEL 224

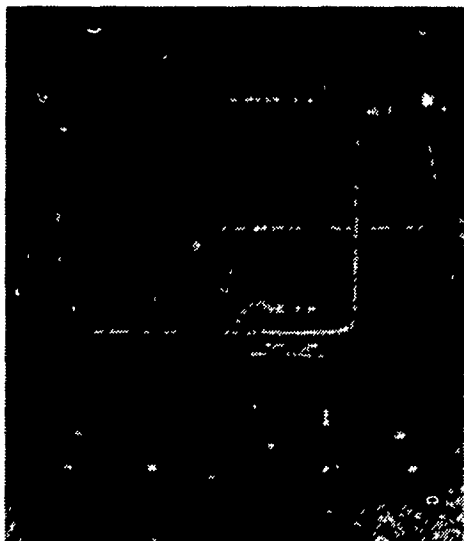


FEED SILAGE EASIER . . . FASTER

Weaverline's self-propelled self-unloading feed carts save half the time of manual feeding. Choose the big Model 224, 30 bushel cart for big barns. Tight corners? Choose the compact Model 223, 24 bushel cart. Both Models are only 33" wide to fit thru most any doorway. Because Weaverline takes the electric

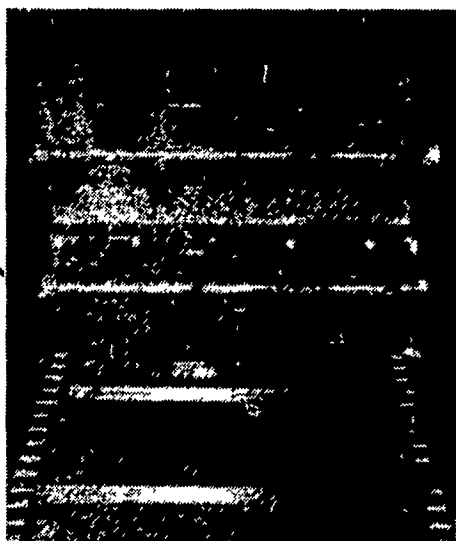
route, you get the job done quietly, without noxious fumes.

Go Weaverline for safety reasons too! Cart stops instantly if operator lets go of traction clutch . . . or if cart bumps against him in reverse travel. Sturdy bumper protects cart from damaging impacts.



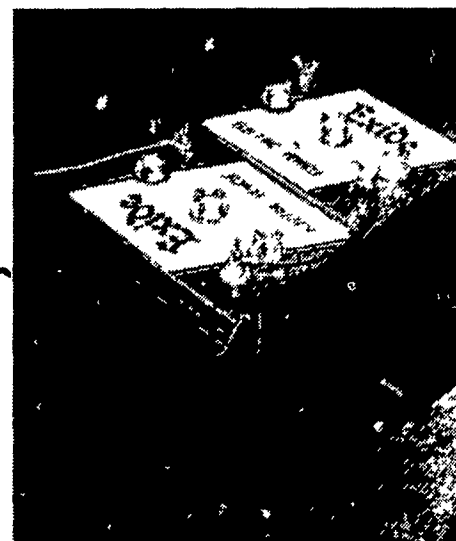
6-speed control for the flow you want

Fingertip control rod at right handle has 8 positions—for starting augers and beaters and for 6 different control speeds. The Cart features high-low shift for both forward and reverse travel. U-Bar is the traction clutch; pull and cart goes, release and it stops. Knob at center activates augers.



Simple, trouble-free feeding action

Three upper augers serve as beaters to keep silage from bridging and assure steady downward movement. Bottom auger is the feeder, forcing silage out to the left and into the manger. Delivery chain and crossbars push the silage forward into the augers.



Easy servicing with roll-out power pack

View shows two of four 6-volt batteries mounted in an easy-access drawer. Slides to the right for servicing batteries shown . . . then out the opposite side for servicing the other two. A special plug receptacle is located at the base of the control box in rear of cart—right where you want it for convenient recharging of the power pack between feedings.

★

CALL YOUR LOCAL DEALER AND GO THE WEAVERLINE WAY

W. M. KROPA & SONS
R.R. 1
Springville, PA 18844
717-965-2081

PEOPLES SALES & SERVICE
Oakland Mills, PA 17076
717-463-2735

DONALD B. MARTIN
R.R. 8
Chambersburg, PA 17201
717-263-3505

SYSTEMA FEED SERVICE
Sussex, N.J. 07461
201-875-5449

JERE MARTIN
R.D. 1
Westfield, PA 16950
814-367-5427

C. B. HOOBER & SON
Intercourse, PA 17534
717-768-8231

TROUT SPRING FARM
Lancaster, PA
717-299-2536

EDGEFIELD FARMS
Quarryville, PA 17566
717-786-3897

NISSLEY FARM SERVICE
R.R. 1
Washington Boro, PA 17582
717-285-4844

HARRY L. TROOP
R.D. 1
Cochranville, PA 19330
215-593-6731

C. J. WONSIDLER BROS.
R.R. 1
Quakertown, PA 18951
215-536-7523

JAMES L. PENNEL
Loysburg, PA 16659
814-766-3310

TRI COUNTY FARM & HOME CENTER
R.R. 1
Bloomsburg, PA 17815
717-437-3440

HISTAND'S FARM & HOME CENTER
R.D. #1, Box 231
Rome, PA 18837
717-744-2371

BRANDT'S FARM SUPPLY, INC.
601 E. High St.
Elizabethtown, PA 17022
717-367-1221

ISENBERG & SMITH
FARM EQ. SALES & SERVICE
R.D.
Alexandria, PA 16611
814-669-9109

HAUGH EQUIPMENT
MAURICE HAUGH
R.R. 4
Brookville, PA 15825
814-849-5546

RYDER SUPPLY CO.

R.D. 8, P.O. Box 219
Chambersburg, Pa.
Phone: 717/263-9111

**Barn and
Feed Lot
Equipment**