

# Chester County DHIA

(Continued from Page 98)

Edgar Miller  
Edwin C. Todd  
Elam Petersheim  
Ronald F. Elliott  
Samuel B. Acker  
Joel C. Brown  
Landis S. Reid  
Lester Eby

OWNER - COW'S NAME	BREED	AGE YR - MO	COW DAYS IN MILK	MILK LBS	% FAT	FAT LBS
Harold Umble						
Carlo	3	4-8	305	20,880	4.8	996
Midnite	3	9-9	305	23,312	3.6	842
Carol	3	7-10	305	20,144	4.1	827
Rose	3	4-2	305	19,158	3.8	728
Jacob K. Stoltzfus						
Carmel	3	2-9	305	23,679	4.2	995
Starby	3	4-6	305	19,363	4.2	810
Duchess	3	4-9	305	17,559	4.5	793
Ruby	3	3-4	305	17,063	4.4	745
Eagle	3	5-10	305	23,609	3.0	715
Twilite	3	2-1	305	18,906	3.8	710
Jefferson D. Yoder						
#6	3	7-0	305	22,772	4.2	962
Harry Freese & Son						
Ope	3	4-11	305	22,239	4.2	931
William E. Parry & Son						
#52	3	6-0	305	24,814	3.7	929
#536	3	6-8	305	21,558	3.6	783
#571	3	6-3	305	19,054	4.0	753
Floyd Miller						
#70	3	6-1	305	20,598	4.4	910
David Bartram						
#110 R	3	6-11	305	19,913	4.5	887
B2	3	3-4	305	16,832	4.4	742
James V. Yale						
#41	3	5-2	305	22,304	3.9	877
Lester Eby						
Lucille	3	6-9	305	21,163	4.1	876
Marnie	3	7-7	305	21,902	3.9	859
Molly	3	6-10	303	18,836	3.8	711
Christ L. Stoltzfus						
Penny	3	4-9	305	20,588	4.2	865

B3	36.6	84.5	41.6	3.7	1.52
B3	32.2	93.6	41.2	3.7	1.52
3	60.2	80.1	40.9	3.7	1.51
B3	63.6	84.1	38.3	3.9	1.51
B3	215.3	89.2	41.8	3.6	1.50
B3	112.4	88.8	47.5	3.2	1.50
B3	64.5	85.6	44.8	3.3	1.50
B3	58.2	82.9	41.3	3.6	1.50

Mast Stoltzfus						
Enid	3	5-1	305	20,348	4.2	858
Eagel	3	5-11	305	18,121	4.0	729
Robert E. Pepple						
#70	3	4-0	305	22,248	3.8	856
Paul King						
Knight	3	7-1	305	23,889	3.6	852
Lizzie	3	4-7	305	23,322	3.4	794
Alice	3	7-4	305	19,655	3.9	762
Delight	3	4-10	305	20,180	3.7	755
Blugill	3	4-0	305	23,616	3.1	739
Walmoore						
#142	3	6-0	305	21,383	4.0	851
#438	3	7-2	305	17,459	4.3	755
Richard Proud						
#152	3	4-7	305	20,087	4.2	841
#149	3	5-3	305	19,394	4.1	786
Ardrossan Farms						
Glr June	1	3-11	305	19,026	4.4	841
Svcplet	1	6-0	241	18,603	4.3	800
Leeseck	1	4-3	303	17,042	4.6	782
Melvin S. Stoltzfus						
Senorita	3	3-1	305	23,272	3.6	838
Whitie	3	3-5	305	19,160	3.8	735
Richard L. Breckbill						
#2	3	7-1	305	20,756	4.0	837
#1	3	4-8	305	18,997	4.4	834
Paul B. Lapp						
Madge	3	6-8	305	21,397	3.8	813
Edgar Miller						
Addie	3	6-8	305	20,892	3.8	792
Ben S. Beiler						
Petunia	3	4-9	305	20,107	3.9	788
George P. Lamborn						
Sis	3	4-4	209	17,796	4.4	787
Cherne	3	4-1	300	17,724	4.2	740
H. & R. Mason						
#76	3	10-2	305	20,344	3.9	785
#75 B	3	3-5	305	18,177	4.0	736
Kauffman Bros.						
Joyce	3	3-6	305	17,155	4.6	785
Ronald F. Elliott						
#116	3	4-8	305	17,957	4.4	782
Hazel 94	3	5-8	305	15,674	5.0	776
George Steele & Sons						
#21	3	4-8	305	20,998	3.7	775
David Windle						
Gerry	3	3-8	305	20,073	3.9	775
Newton Evans, Jr.						
Countess	3	9-0	305	20,757	3.7	773
#38	3	2-6	302	21,122	3.6	762
#43	3	7-4	305	19,127	3.8	719
#132	3	5-0	305	25,260	2.8	715
David E. Weaver						
Josie	3	3-11	277	19,811	3.9	773
Carol	3	3-9	291	19,681	3.7	738
Kulp Bros.						
Norma	3	8-5	305	20,446	3.7	765
Hargret Dairy, Inc.						
#59	3	7-8	305	19,658	3.9	764
#25	3	5-1	283	16,646	4.4	740

## Lancaster Farming, Saturday, October 1, 1977-99

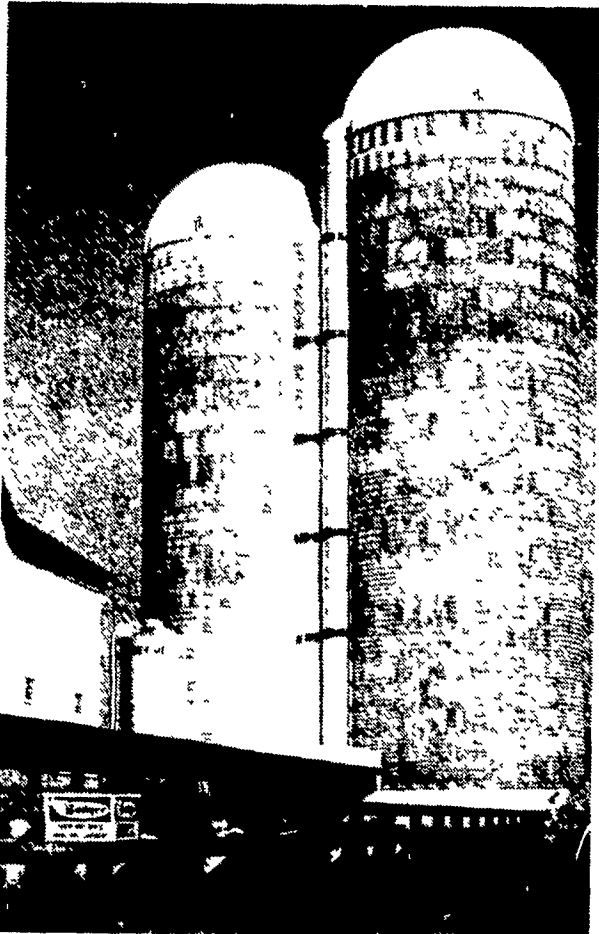
Vernon Guest & Son						
Astrid	3	3-9	305	19,055	4.0	761
Landis S. Reid						
#48	3	5-2	305	18,921	4.0	760
Omer S. Smoker						
#66	3	4-11	305	18,330	4.1	760
#74	3	4-4	291	15,089	4.7	713
H. R. & H. L. Brown						
#75	3	8-2	305	20,061	3.8	759
B Red	3	4-10	305	15,843	4.4	705
Herman Stoltzfus						
Anabel	3	7-2	305	21,507	3.5	757
Debbie	3	5-5	248	19,649	3.8	756
Deedee	3	3-0	305	19,031	4.0	753
John M. Umble						
Triune	3	3-11	305	18,776	4.0	756
Flicka	3	3-7	302	18,922	3.8	727
J. Elmer Lapp						
Janet	3	6-6	302	20,434	3.7	755
Emma	3	5-9	305	18,824	3.9	726
Charles H. Gable						
#192	1	7-4	305	16,913	4.5	755
#235	1	4-1	305	16,436	4.3	703
E. Richard Hoopes						
#90	3	6-5	305	18,460	4.1	753
Walmoore #3						
#147	3	5-11	290	20,591	3.6	741
#412	3	3-1	305	16,513	4.3	708
Earl Graybill						
Celery	3	6-11	305	17,202	4.3	740
Miller McDowell, Jr.						
Hitail	3	5-0	285	18,453	4.0	738
W. B. Dixon Strowd						
#125	3	5-4	305	17,803	4.1	737
Llanduey Farm						
Dumpling	3	4-6	305	15,323	4.8	728
Daniel S. Stoltzfus						
Martha	3	6-11	305	21,109	3.4	719
Samuel B. Acker						
#211	3	8-9	300	16,468	4.4	719
Harold R. Kulp						
Queen	3	6-8	305	15,266	4.7	719
Timothy Kauffman						
Lucky	3	6-2	305	17,496	4.1	713
Sally	3	4-1	305	16,933	4.1	700
Dean Roland						
#68 G	3	7-11	305	16,940	4.2	713
Rothenberger Bros.						
#14	3	6-4	305	16,151	4.4	707
C. Edward Lawrie						
#25	3	7-11	305	17,363	4.1	706
Jonas E. Stoltzfus						
Heidi	3	6-2	305	17,647	4.0	704
John S. Smoker						
#25	3	1-7	305	17,392	4.0	703
Elvin P. Graybill						
Julie	3	5-2	305	16,574	4.2	701
Getaway Farm						
#217	3	3-9	305	14,589	4.8	701

# TERRE HILL 50<sup>TH</sup>

## Anniversary

We at Terre Hill Silo Co., Inc. wish to express our appreciation to our many faithful customers who have made the success of the past 50 years possible

We shall continue our endeavor to produce quality products at a reasonable price



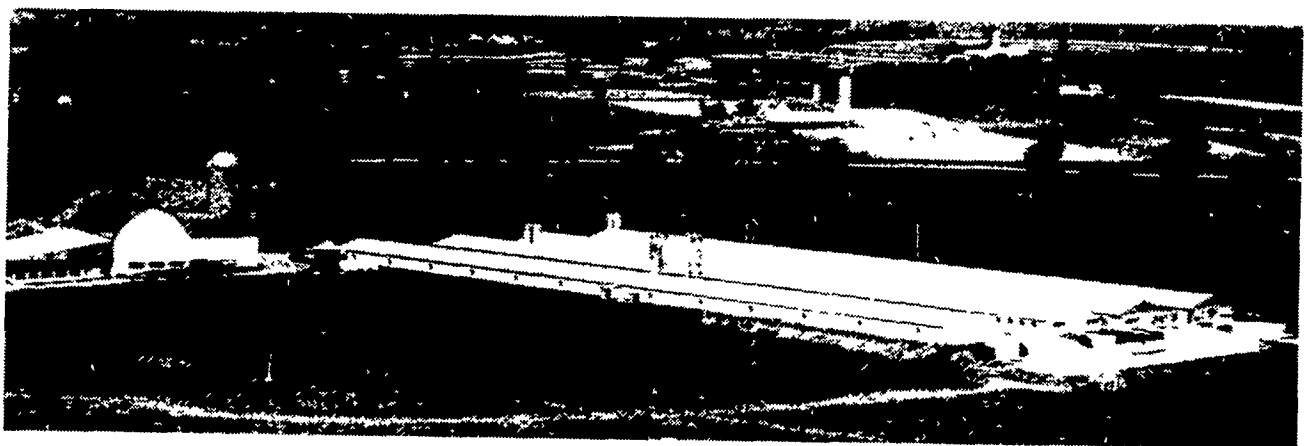
More Quality More Strength More Economy  
Silos - Silo Unloaders - Bunk Feeders

For More Free Information—Call Us  
Early Order Discounts Available

### TERRE HILL SILO CO., INC.

Terre Hill, Pa. 17581 Phone 215-445-6736  
Quality & Service Since 1927

# LP GAS



SERVING FARMERS . . .

"WE MAKE IT OUR BUSINESS"

Wherever you need heat, you'll find LP-gas ready to serve you. It's ideal for heating farm buildings, brooding, water heating, incinerators, as well as for regular home use. You'll find LP-gas is both economical and practical. Let us show you the advantages . . . there's no obligation whatsoever.

CALL (717) 665-3588

### MYER'S METERED GAS SERVICE, INC.

P.O. BOX 71  
MANHEIM, PA 17545