

THE OLD FARMER'S ALMANAC

SEPT. 26-Oct. 2, 1977
Days of gold, not too cold.

Night equals day this week Ford introduced Model "T" Oct 1, 1908 Full moon Sept 27 . Average length of days for the week, 11 hours, 51 minutes US Navy stopped flogging this week in 1850 First World Series started Oct. 1, 1903, Boston versus Pittsburgh . One man with courage makes a majority (Andrew Jackson).



Ask the Old Farmer: Could you explain the expression "the goose hangs high" My grandfather used it, and I believe he meant everything was o.k. W.N., Albany, N.Y.

Part of the expression "everything is lovely and the goose hangs high," meaning all is hunky dory Some say the correct word is "honks" high, indicating high flight under high clouds and, hence, probably fair weather. We say the word is "hang," indicating not only high flight in fair skies, but also a view-of the earth below from a point clean out of gunshot, in other words — safety

Home Hints: Mint scattered around their haunts drives away mice.

OLD FARMER'S WEATHER FORECASTS

New England: Very warm and rainy through Friday; week's end sunny and hot

Greater New York — New Jersey: Sunny, thunderstorms and hot through Friday; clear and very warm through weekend.

Middle Atlantic Coastal: Heavy rain to start, then tapering to light rain Thursday, expect warm and clear weekend.

Piedmont & Southeast Coastal: Sunny, very warm with a few showers through Friday, week's end sunny, hot with heavy showers west

(All Rights Reserved, Yankee, Inc., Dublin, N.H. 03444)

Chambersburg Auction

Sept. 15, 1977

CATTLE 340: Compared with last Thursday's market, slaughter cows steady, mostly 50 cents to \$1 lower. Slaughter bulls about steady. Few Choice 2-3, 950-1200 lbs. slaughter steers 39.00-41.00, Good 35.00-39.00, Standard 31.75-34.85. Few Choice slaughter heifers 36.75-37.35, few Standard 31.00-31.50. Utility and Commercial slaughter cows 25.00-28.25, couple to 28.60, Cutters 25.00-27.25, Canner and Low Cutter 22.25-25.25, Shells down to 20.50. Few Standard slaughter bullocks 32.60-33.10, few Utility 28.00-30.00. Yield Grade No. 1, 1200-1700 lbs. slaughter bulls 31.50-36.50. Few Choice 350-600 lbs. feeder heifers 31.75-39.00.

CALVES 736: Vealers grading Choice and Prime \$2 to \$3 lower, Standard and Good 70-110 lbs. about steady. Prime vealers 68.00-74.50, Choice 57.00-71.00, Good 45.00-60.00, Standard and Good 110-130 lbs. 39.00-45.00, 90-110 lbs. 33.50-37.50, Standard 70-85 lbs. 31.50-35.50, Utility 50-90 lbs. 25.00-33.00. Farm Calves: Holstein bulls 90-120 lbs. 37.00-50.00, Holstein heifers 85-115 lbs. 36.00-50.00.

HOGS 114: Barrows and gilts strong to \$1 higher. US No. 1-2 200-220 lbs. barrows and gilts 43.00-43.60, No. 1-3 195-240 lbs. 41.50-42.10, No. 2-3 200-240 lbs. 39.75-40.75. US No. 1-3 300-550 lbs. sows 33.50-38.25, No. 2-3 300-450 lbs. 29.75-33.00. Couple Boars at 25.85.

FEEDER PIGS 59: US No. 1-3 25.35 lbs. feeder pigs 24.00-28.00 per head, few No. 1-3 100-125 lbs. 48.50-51.50 per hundredweight.

SHEEP 60: Choice 60-110 lbs. slaughter lambs 42.00-50.00, Good 50-80 lbs. 35.00-40.00 Slaughter ewes 11.50-19.00.

Valley Livestock

VALLEY STOCKYARDS
Athens, Pa.

Monday, Sept. 19, 1977

Reported receipts of 627 calves, 166 cows, 106 hogs, 61 heifers, 106 sheep and lambs, 25 bulls, and 17 steers. Cattle market steady and calf market higher.

Veals 45.00-64.50; Bobs, 90 to 110 lbs. 37.00-40.00; Bobs, 80 lbs. and down, 30.00-36.00; grassers and feeders 20.00-45.00; lambs 35.00-44.00; sheep 12.00-20.00; hogs 200 to 250 lbs. 38.00-41.00; sows 28.00-32.00; boars 20.00-21.00; pigs 12.00-28.00; heifers 24.00-33.00; steers, good 31.00-34.50; steers, common 26.00-32.00; bulls 26.00-34.50; cows, good 27.50-29.00; cows, medium 23.50-25.00; cows, poor or small 18.00-21.00; horses 80.00-137.50; ponies 10.00-25.00; goats 10.00-35.00.

Carlisle Auction

Carlisle, Pa.

September 20, 1977

CATTLE 231. Compared with last Tuesday's market; Choice slaughter steers 39.50-41.35, Good 35.75-38.75, Standard 29.25-34.50, Utility 26.75-30.00. Utility & Commercial slaughter cows 25.75-27.35, Cutters 23.00-26.25, Canner & Low Cutter 20.75-23.00.

CALVES 186. Choice vealers 54.00-70.00, Good 41.00-57.00, Standard & Good 105-120 lbs. 31.00-44.00, 90-115 lbs. 23.00-34.00, Standard 70-90 lbs. 18.00-25.00.

HOGS 331. US No. 1-2 200-230 lbs. barrows & gilts 41.25-43.00, No. 1-3 200-240 lbs. 39.75-41.50, No. 2-3 190-240 lbs. 37.00-39.00. US No. 1-3 300-550 lbs. sows 35.75-38.00, No. 2-3 300-650 lbs. 31.75-35.00.

FEEDER PIGS 397. No prices quoted.

SHEEP 11. Few Good spring slaughter lambs 44.00

GM Livestock Market

Duncanville, Pa.
September 19, 1977

Market higher than last week's market.

Steers: Good to Choice: 36.00-38.00; Standard to Good 32.00-36.00.

Heifers: Good to Choice 32.00-34.50; other 26.50-31.50.

Feeder Steers: Good to Choice, 300 to 500 lbs. 38.00-42.50; 500 to 700 lbs. 38.00-40.50; Standard to Good, 300 to 800 lbs. 35.00-38.00.

Bulls: Bullocks, 1000 to 1100 lbs. 36.00-39.50; bullocks, 1000 to 1734 lbs. 30.00-38.20.

Cows: High Choice to Prime: 28.00-29.35; Good to Standard 25.00-28.00; Utility 23.00-25.50; Shells 20.00-21.50.

Calves: High to Choice 72.00-74.00; Good to Choice 65.00-72.00, 120 to 140 lbs. 50.00-65.00; Standard to Good, 100 to 120 lbs. 35.00-50.00; bobs 15.00-30.00; fancy bull calves 38.00-46.00; fancy heifers calves 35.00-45.00.

Hogs: 210-230 lbs. 41.85-42.50; 180 to 210 lbs. 40.50-40.85.

Feeder Pigs: 15 to 35 lbs. 15.00-30.00.

Sows: 300 to 500 lbs. 35.00-37.00.

Sheep: 44.00-46.50.

New Holland Horse

New Holland Sales Stables
Monday, September 19, 1977
Reported receipts of 434

horses and ponies. Market steady with last week's market.

Load of New York driving horses 310-585; load of Tennessee riding horses 300-520; local work horses 500-

875; driving horses 150-685; riding horses 150-325; better horses 350-600; lightweight killers 18-26; heavyweight killers 30-34; mares 15-55; colts 10-30; geldings 15-50; larger ponies 65-165.

HAY, STRAW AND EAR CORN SALE

Every Wednesday at 12 Noon
At David Good's Farm Equipment Sale
North Maple Ave., Loomis, PA

HARVEY Z. MARTIN

Home Phone 235-465-8888
We Buy On Orders
Bus. Phone Wed. Only
717-688-4790

We also buy hay and straw privately.

GET THE WHOLE FAMILY INVOLVED

CONSIDER A

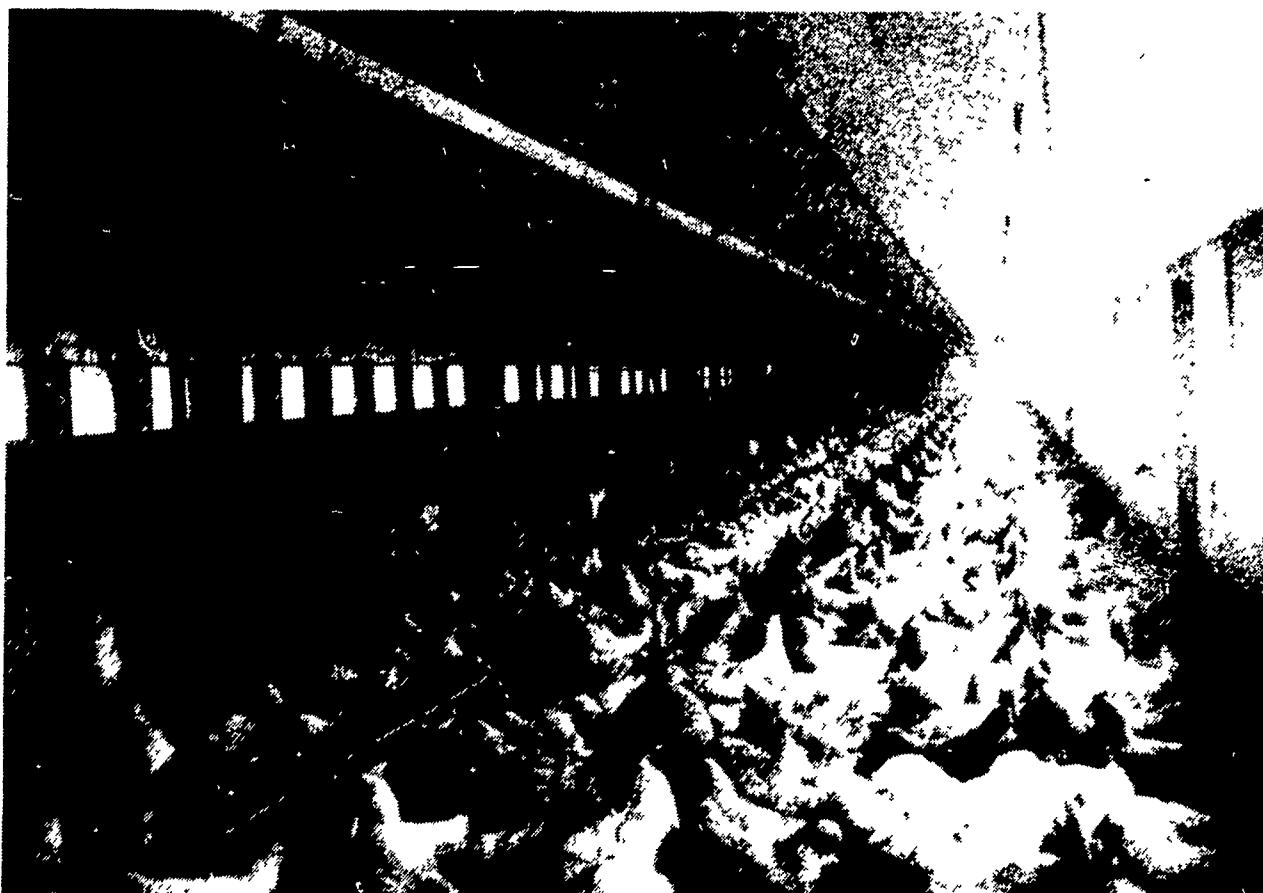
BROILER BREEDING HATCHING EGG UNIT

FOR

LONGENECKER'S HATCHERY, INC.

ELIZABETHTOWN, PA

ESTABLISHED SINCE 1920



LONGENECKER'S HATCHING EGG UNITS ARE SPECIALLY DESIGNED FOR EFFICIENT OPERATION.

CONTACT

EARL GERLACH — 717-367-1545

FOR MORE INFORMATION

LIMITED NUMBER OF UNITS AVAILABLE.