


*I Can Go to Work Now...*

**Farmers AgCredit Is Backing Me Up.**

Whatever your financial needs, CALL ON US  
George M. Lewis, President

**FARMERS AgCREDIT CORP.**  
9 East Main Street, Lritz, PA 717-626 4721




A master showman and fitter at the 22nd annual Pennsylvania Southeastern Regional FFA District Dairy Show was Ruby Ginder Bollinger, 19, of Manheim.

# FFA Holstein

(Continued from Page 26)  
Aged Cows

1. Jay Kreider, 2. David Komer, Easton.

Winning recognition as either master fitters, master showmen, or both, were following people: Curtis Martin, Sheryl Bollinger, Barry Donmoyer, Dwayne Peifer, Tom Kearns, Gary Lentz, Glenn Shenk, Todd Cary, Steve Kauffman, Joel Loch, Daryl Kunkel, Arlen

Keener, John Zimmerman, Tina Bucher, Donna Peiffer, Robert Fox, Andrew Gawrys, Lane Keen Jr., Dale Keen, Kevin Smoker, Mark Weiler, Kenneth Sanner, Daryl Harnish, Jere Rutt, Madeline Lucas, Bradley Yoder, Paul Horning, Jay Kreider, Jeff Miller, Vickie Warfel, Wendy Shaw, Ruby Ginder Bollinger, David Schantz, William Dietrich, and Warron Buckman, III.

## Atlantic's Harry Roth

(Continued from Page 1)

production, processing, and distribution, and sire selection.

The board of directors of NAAB is composed of nine men who are elected from various A.I. organizations throughout the country. Directors meet periodically during the year to review A.I. programs and their administration through the NAAB. The organization is a self-governing and self-policing trade group which assures high standards and fair practices. Membership with the NAAB is limited to U.S. bull studs, with some foreign organizations participating on an associate level.



Harry Roth

Among the group's concerns and involvement are the import and export sales of cattle and semen, relations with breed registry organizations, animal health, research, DHIA, as well as policy making for NAAB.

Two Atlantic employees who have previously served on the NAAB's board of directors are Earl Groff and David Yoder.

W Wickes Lumber

# YOUR ONE STOP FOR FARM BUILDING MATERIALS



PRICES GOOD THRU SEPT. 14

### TREATED LUMBER

The perfect choice for farm buildings! Economical treated boards can be stained, painted or allowed to weather naturally. Durable... creates a safeguard against termite damage and decay.

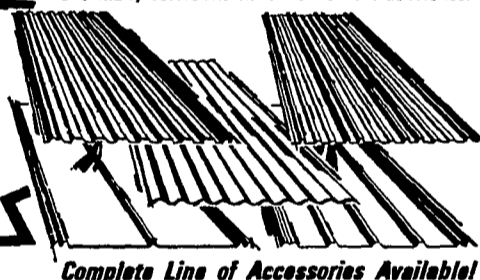
	8'	10'	12'	14'	16'	18'	20'	22'
2x6	2 80	3 50	4 62	—	6 80	7 92	9 50	—
2x8	4 27	5 34	6 88	7 66	8 75	9 84	12 27	—
4x6	—	8 50	10 20	11 90	14 08	17 82	20 60	23 98
6x6	—	12 75	15 30	17 85	20 88	26 73	30 90	35 97

**5% OFF**

REGULAR PRICE OF TREATED LUMBER, ROOFING AND SIDING

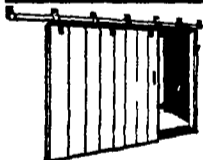
### PAINTED STEEL ROOFING/SIDING

Tops in durability! Heavy-gauge galvanized steel panels are maintenance-free and corrosion-resistant. Many colors and sizes are available at Wickes!



Complete Line of Accessories Available!

Versatility Plus Long-Lasting Protection!



#### BARN DOOR TRACK

You'll be on the right track when you choose our heavy duty, galvanized unit. Easy to install and a complete assortment of hardware is available at low sale prices!

**10% OFF**  
REGULAR PRICE!



#### 4 PT. BARB WIRE

Sturdy 12 1/2 gauge wire for a variety of uses around your farm. Galvanized for long life and extra strength... yet easy to handle! 80 rods per roll.

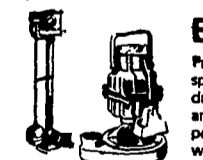
**\$26<sup>95</sup>** Roll



#### 12/2 W/G ELEC. WIRE

Ideal for use with your farm machinery and household appliances! Non-metallic wire is plastic-jacketed... safe for all interior use.

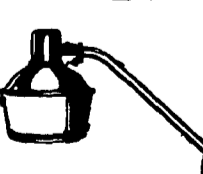
**\$21<sup>37</sup>** 250' Coil



#### EFFICIENT SUMP PUMPS

Protect your basement from spring rain damage with a heavy duty pump! Both submersible and upright models feature a powerful 1/3 h.p. motor and waterproof cord.

**\$50<sup>95</sup>** Submersible  
**\$50<sup>95</sup>** Pedestal



#### MERCURY VAPOR LIGHT

Security for your farm! 250 watt unit is easy to assemble and install. When light burns out just replace bulb, no need to rewire.

**\$31<sup>95</sup>** Ea.

SAVE \$5.00



#### ALUMINUM ROOF COATING

The perfect heavy-duty protection for your farm buildings! This asbestos-fibered aluminum coating rustproofs, waterproofs, seals & caulks. Tough yet always flexible.

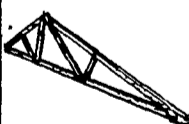
**\$5<sup>99</sup>**



#### TREATED FENCE POSTS

Easy-to-set poles for your fencing needs and other farm uses. Decay and insect-resistant for years of dependable service. Economical can be painted or stained.

**\$2<sup>49</sup>** Ea.  
Reg. 3.29



#### POLE BARN TRUSSES

Progressive farm owners save time and money by using our top-quality trusses. Delivery is made right to the job site and our trusses are pre-engineered to meet your exact needs.

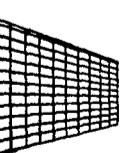
CHECK WICKES FOR TRUSS PRICES



#### BEHLEN COMBINATION PANELS

Galvanized by hot-dip method after welding... no place for rust to start. Easy to install and designed to provide years of heavy-duty service.

**\$13<sup>95</sup>** 16'x52"



#### BEHLEN CATTLE PANELS

A fence panel that really lasts! Galvanized by hot-dip method after welding... no place for rust to start. Ready for easy installation.

**\$14<sup>39</sup>** 16' x 52"

#### 3 EASY WAYS TO CHARGE...

Use the handy Wickes National Credit Card, personalized Time-Payment Plan or your own Bank Cards!

#### EXPERT INSTALLATION SERVICE...

Wickes provides economical installation service for many products. Ask for details at your local Center!

**Wickes Lumber**



1 1/4 Mile N.E. of EPHRATA on Route 272

STORE HOURS: Monday thru Thursday

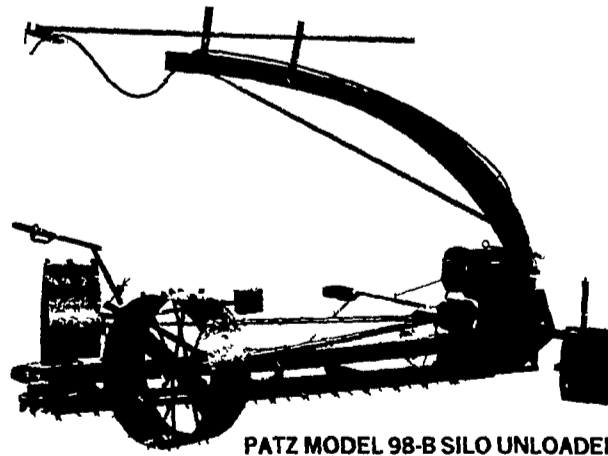
8:00 to 5:00, Friday 8:00 to 9:00

Saturday 8:00 to 4:00

PHONE - (717) 733-6521 or 733-7766 LANC. 397-4591

## SAVE AT MARVIN J. HORST

MEMBER OF TOP 50 CLUB  
Patz Top 50 Dealer in Sales,  
U.S. and Canada



PATZ MODEL 98-B SILO UNLOADER

In Stock — Ready for Delivery

(4) 12 - 16 ft. Unloaders

(3) 16 - 20 ft. Unloaders

(1) 20 - 24 ft. Unloader

Also some Barn Cleaners and Conveyors and Bunk Feeders in stock.

DEAL GOOD ONLY IF YOU LIVE  
NORTH OF U.S. ROUTE 30

## MARVIN J. HORST

15 Years Patz Dealer

RD 1 (Iona) Lebanon, PA

On Route 897 between

Schaefferstown and Lebanon

Phone: 717-272-0871